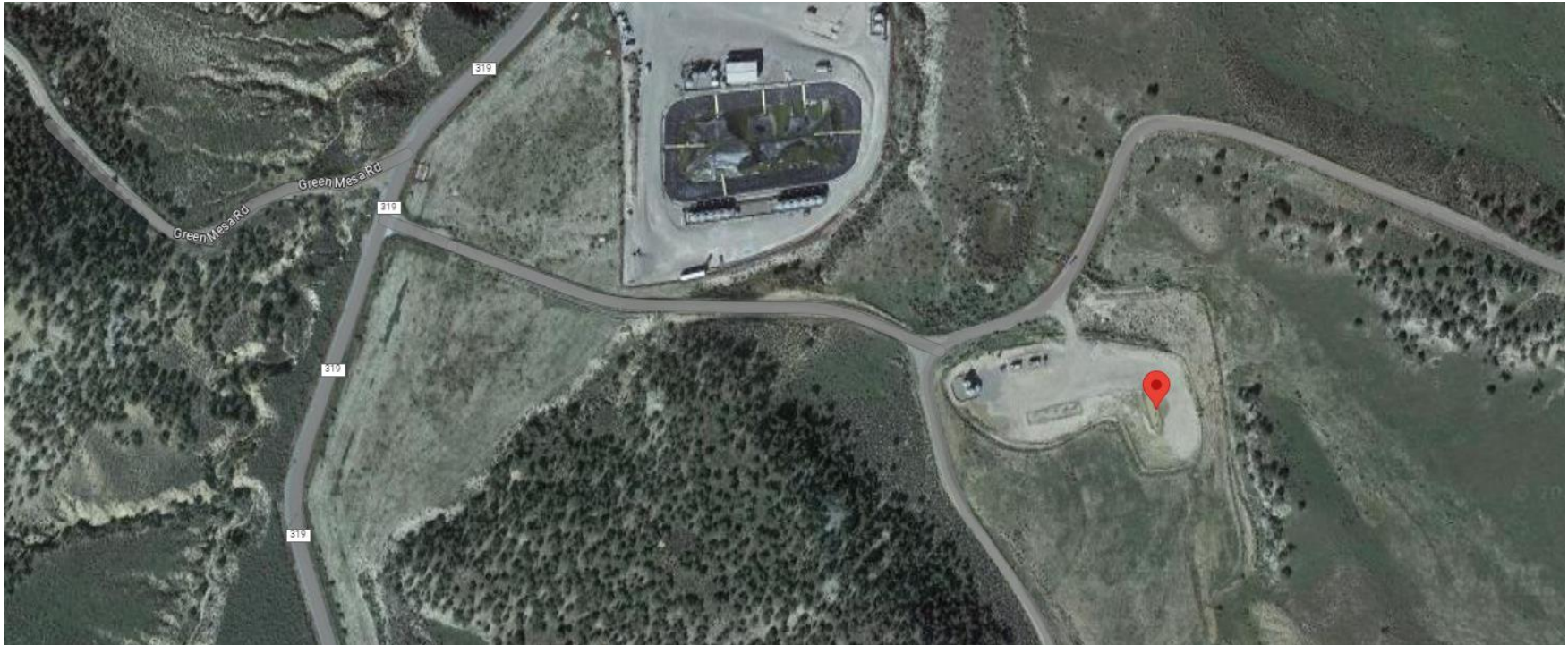


**Storm Water Management and Erosion control**  
**Location Name: CAERUS PICEANCE LLC H26NW Pad**  
**Location #: 335314**



**Location Overview: Location is within Rule 411b Generalized External Buffer & Rule 411a Generalized Intermediate Buffer. Location is approximately 432 yards from Dry Creek. Location is within High Priority/Density/Black Bear Habitat areas & in close proximity to NSO Habitat area.**  
**Section/Township/Range: 26 6S93W**

**Storm water Management and Erosion control**  
**Location Name: CAERUS PICEANCE LLC H26NW Pad**  
**Location #: 335314**



**North West corner of location.**



**North East corner of location.**

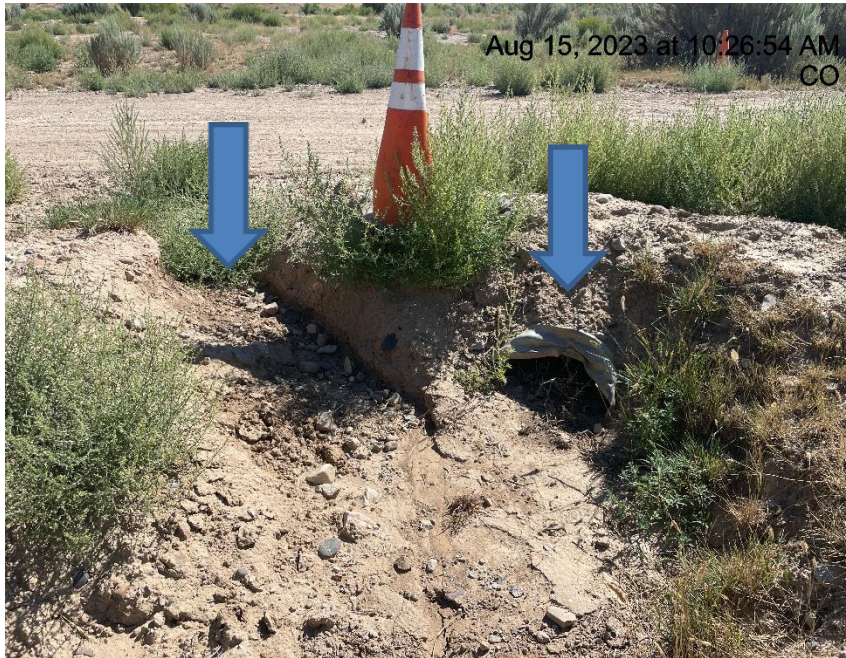


**South West corner of location.**



**South East corner of location.**

**Storm water Management and Erosion control**  
**Location Name: CAERUS PICEANCE LLC H26NW Pad**  
**Location #: 335314**



**Photo # 5825 Erosion near culvert & ditch/insufficient runoff controls/BMP's & culvert needs maintenance (near entrance to location)**



**Photo # 5826 Erosion near culvert & ditch/insufficient runoff controls/BMP's (near entrance to location)**

**Storm water Management and Erosion control**  
**Location Name: CAERUS PICEANCE LLC H26NW Pad**  
**Location #: 335314**



**Photo # 5827 Culvert needs maintenance (near entrance to location)**