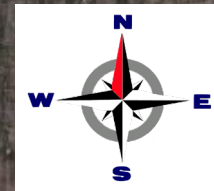
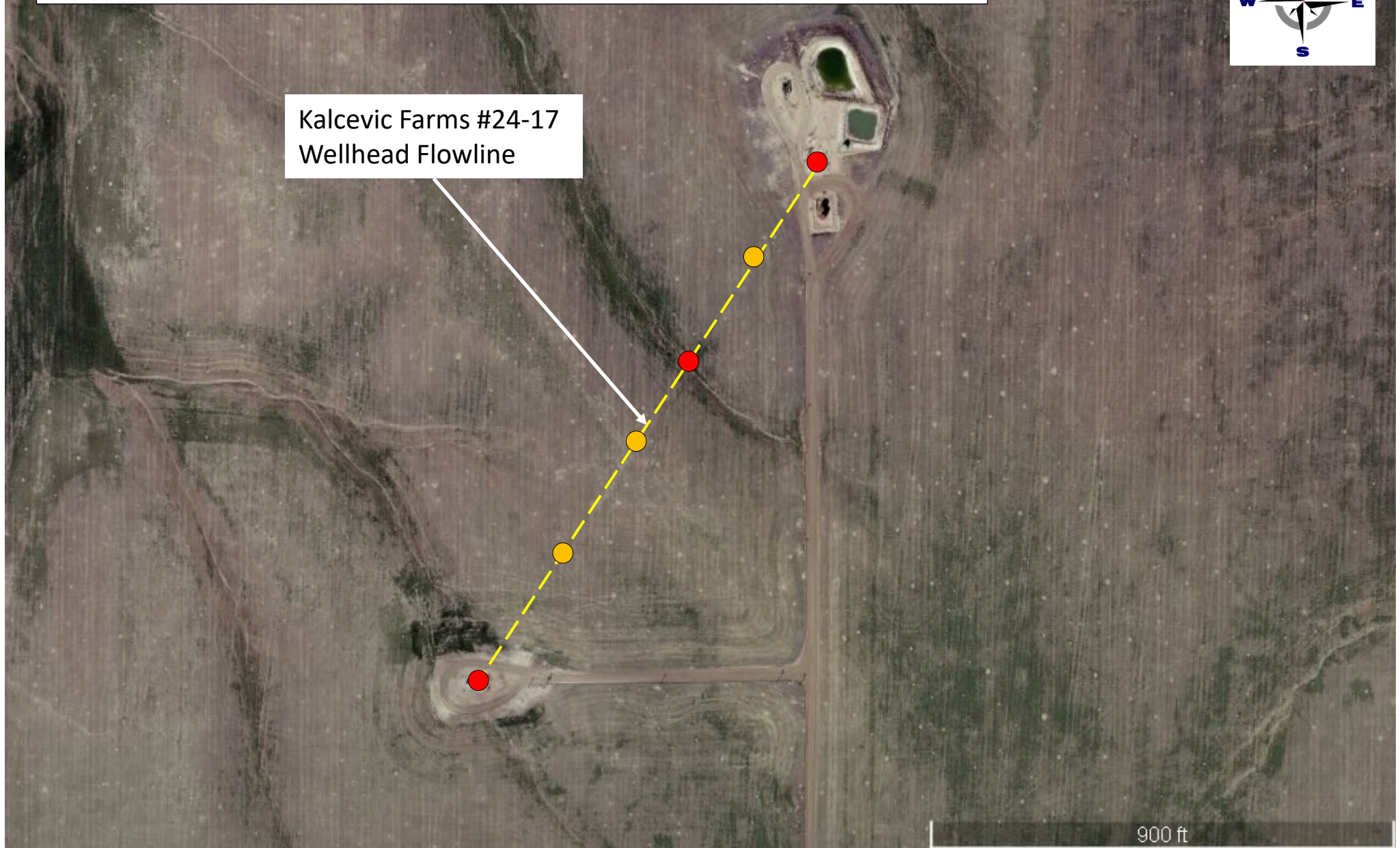


- Proposed Soil Field Screening Sample Location (approximate)
- Proposed Confirmation Soil Sample Location for Laboratory Analysis (approximate)



Kalcevic Farms #24-17
Wellhead Flowline



Project No:	Proposed Flowline Sampling Locations Kalcevic Farms #24-17 Flowline S2SW 17 2S54W Washington County, Colorado		Western Operating Company	1165 Delaware St, Suite 200 Denver, CO 80204 TEL. 303-398-0302	FIGURE
Drawn By: RJF					3
Date: 4/11/2023					