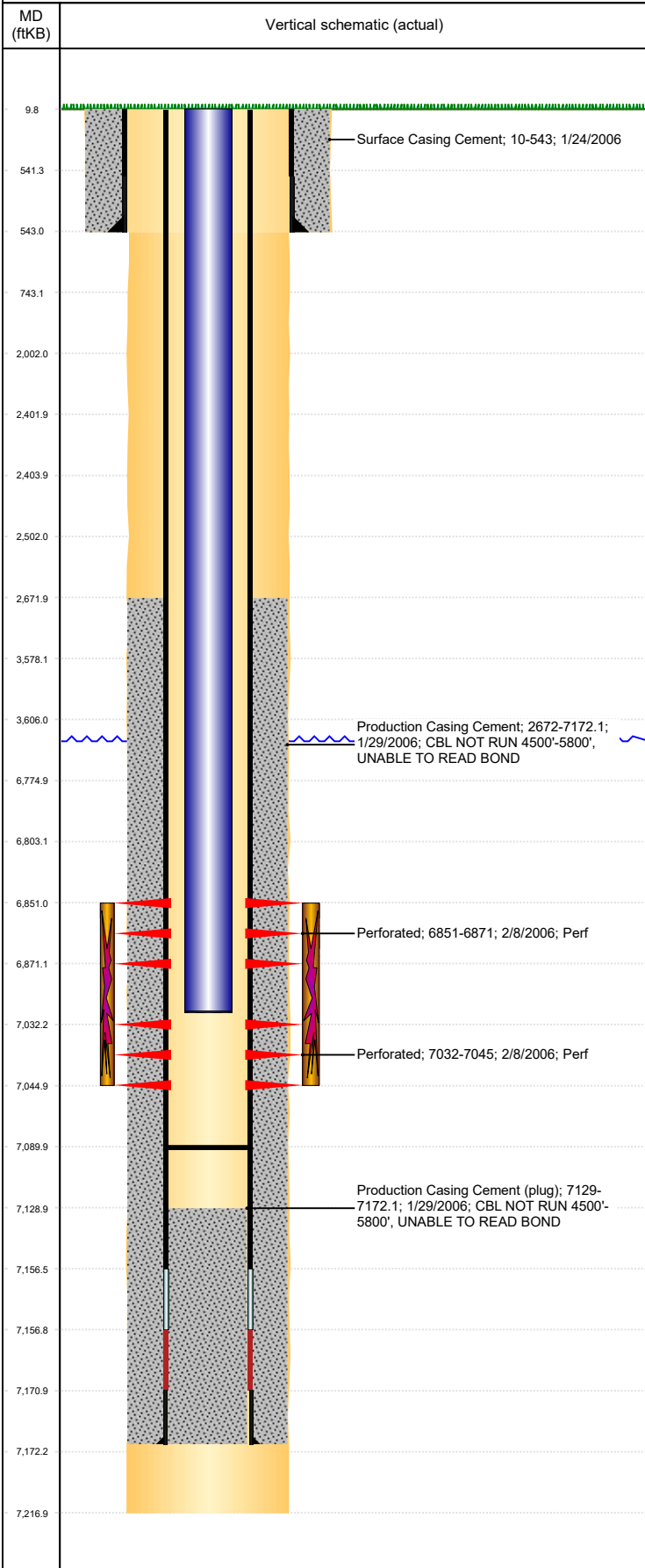




P&A Wellbore For State

Well Name: MILE HIGH SHEEP 08-32

Land, Original Hole, 8/15/2023 9:15:41 AM



Well Header									
Surface UWI 0512323451		Business Unit Rockies		Gov Auth Dist		Prod Tree Loc Land			
Orig. KB to Gnd (ft) 10.00		Original Spud Date 1/23/2006		Abandon Date		Well Sub-Status PR		High...	
								N	
Comment									
Surface Location (Congressional)									
Qtr 3 NW	Qtr 4 SW	Section 8	Twonshp 6	Twonsh... N	Range 64	Rng E/... W	Latitude (°) 40.49822	Longitude (°) -104.58196	
Wellbore Sections									
Section Des		Hole Size (in)		Act Top (ftKB)		Act Btm (ftKB)			
SURFACE		12 1/4		10.0		543.0			
PRODUCTION		7 7/8		543.0		7,217.0			
Casing Strings									
Csg Des		Run Date		OD (in)		Wt/Len (lb/ft)		Grade	
Surface		1/24/2006		8 5/8		24.00		10	
Production Casing		1/29/2006		4 1/2		11.60		10	
7172.1									
Cement									
Des		Start Date		Top (ftKB)		Btm (ftKB)			
Surface Casing Cement		1/24/2006		10.0		543.0			
Production Casing Cement		1/29/2006		2,672.0		7,172.1			
Zone Statuses									
Zone Name		Status Date		Status		Fluid Type		Job	
CODELL		12/16/2015		PR					
CODELL		3/29/2017		PR					
NIOBRARA		2/17/2006		PR		Water		DRILLING/COMPLETION - ORIGINAL, 1/23/2006...	
NIOBRARA		6/2/2010		PR				Flowing	
Perforation Data									
Linked Zone		Explosive Type		Entered Shot Total		Top (ftKB)		Btm (ftKB)	
NIOBRARA, Original Hole		B		40		6,851.0		6,871.0	
CODELL, Original Hole				52		7,032.0		7,045.0	
2/8/2006									
Stimulation Intervals									
Zone		Start Date		Top (ftKB)		Btm (ftKB)			
NIOBRARA, Original Hole		2/8/2006		6,851.0		6,871.0			
NIOBRARA-CODELL, Original Hole		2/10/2006		6,851.0		7,045.0			
Other In Hole									
Run Date		Des		Make		OD (in)		Top (ftKB)	
Logs									
Date		Type		Depth Top (MD) (ftKB)		Btm (ftKB)			
1/29/2006		COMPENSATED DENSITY		3,000		7,162.0			
1/29/2006		INDUCTION		533		7,182.0			
2/7/2006		CBL/CCL/GR		2,500		7,129.0			
Plug Back Total Depths									
Date		Type		Com		PBTD (ftKB)			
2/7/2006		FILL		DEPTH LOGGER ON CBL		7,129			
5/22/2006		FILL		CLEAN OUT TO 7090'		7,090			