



**RADIAL BOND TOOL  
GAMMA RAY  
CCL**

Company CIVITAS  
Well BOX ELDER FARMS 6-32  
Field SECOND CREEK  
County ADAMS  
State CO Country USA

Company CIVITAS  
Well BOX ELDER FARMS 6-32  
Field SECOND CREEK  
County ADAMS  
State CO Country USA

Location: API #: 05-001-08328  
SW/SE  
LAT 39.814542 LONG -104.703835  
SEC 6 TWP 3S RGE 65W  
Permanent Datum GL Elevation 5,376'  
Log Measured From 12' KB  
Drilling Measured From GL  
Other Services  
CIBP / CMT  
Elevation  
K.B. 5388'  
D.F. ---  
G.L. 5,376'

Date 07/08/2023

Run Number ONE  
Depth Driller 8493'  
Depth Logger 4005'  
Bottom Logged Interval 4000'  
Top Log Interval SURFACE  
Open Hole Size 8.625'  
Type Fluid WATER  
Density / Viscosity N/A  
Max. Recorded Temp. NA  
Estimated Cement Top N/A  
Time Well Ready ON ARRIVAL  
Time Logger on Bottom N/A  
Equipment Number 7770  
Location GREELEY, CO  
Recorded By W. WACKER  
Witnessed By Jason Gibbs

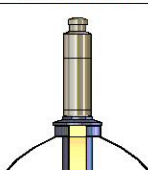
Borehole Record				Tubing Record			
Run Number	Bit	From	To	Size	Weight	From	To
Casing Record	Size						
Surface String	8.625"			Wgt/Ft		Top	Bottom
Prot. String				24#		SURFACE	355'
Production String	4.5"			11.6#		SURFACE	8493'
Liner							

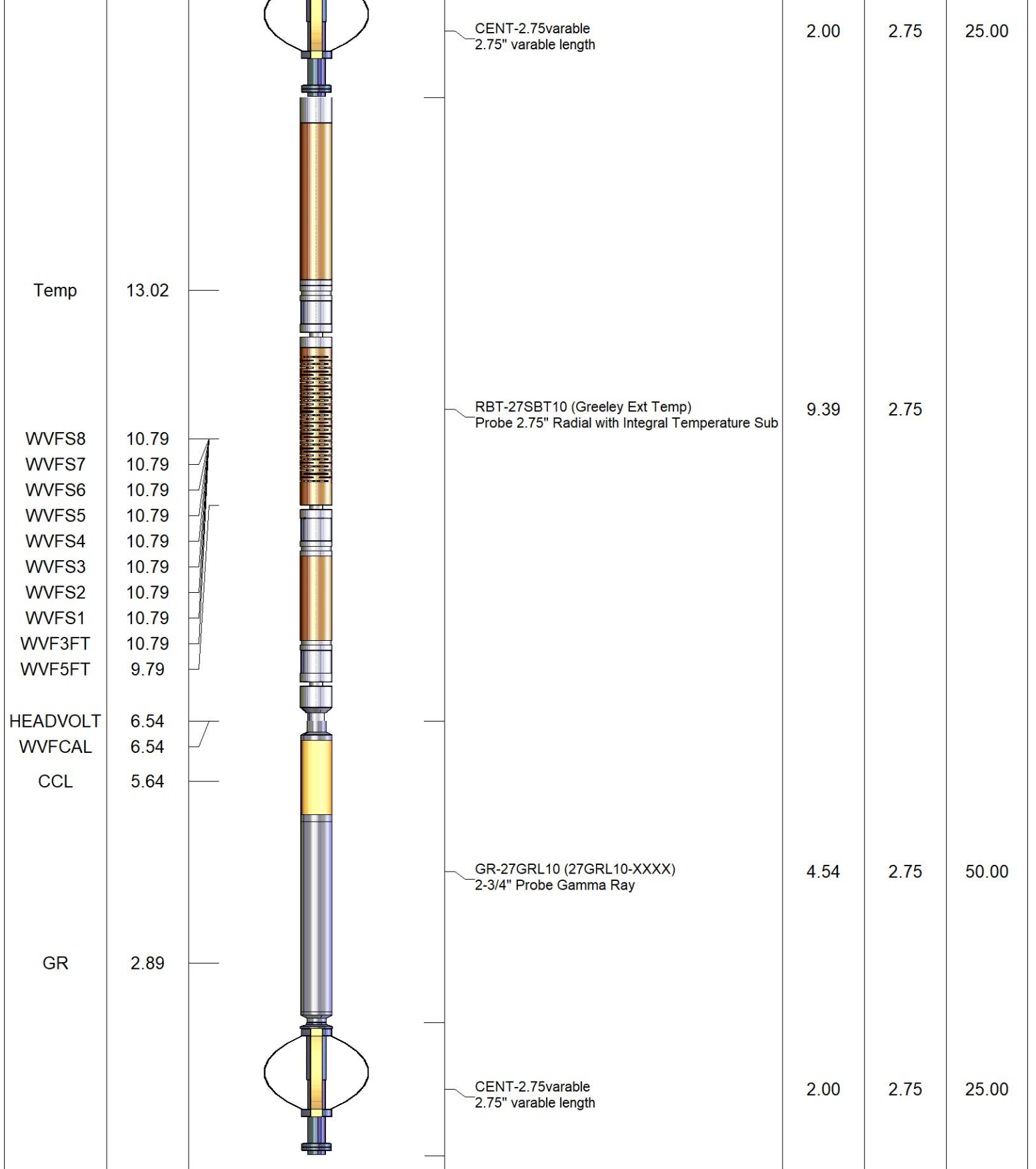
<<< Fold Here >>>

All interpretations are opinions based on inferences from electrical or other measurements and we cannot and do not guarantee the accuracy or correctness of any interpretation, and we shall not, except in the case of gross or willful negligence on our part, be liable or responsible for any loss, costs, damages, or expenses incurred or sustained by anyone resulting from any interpretation made by any of our officers, agents or employees. These interpretations are also subject to our general terms and conditions set out in our current Price Schedule.

**Comments**

**RAN CBL TO VERIFY CEMENT BOND  
WELL LOADED UPON ARRIVAL**

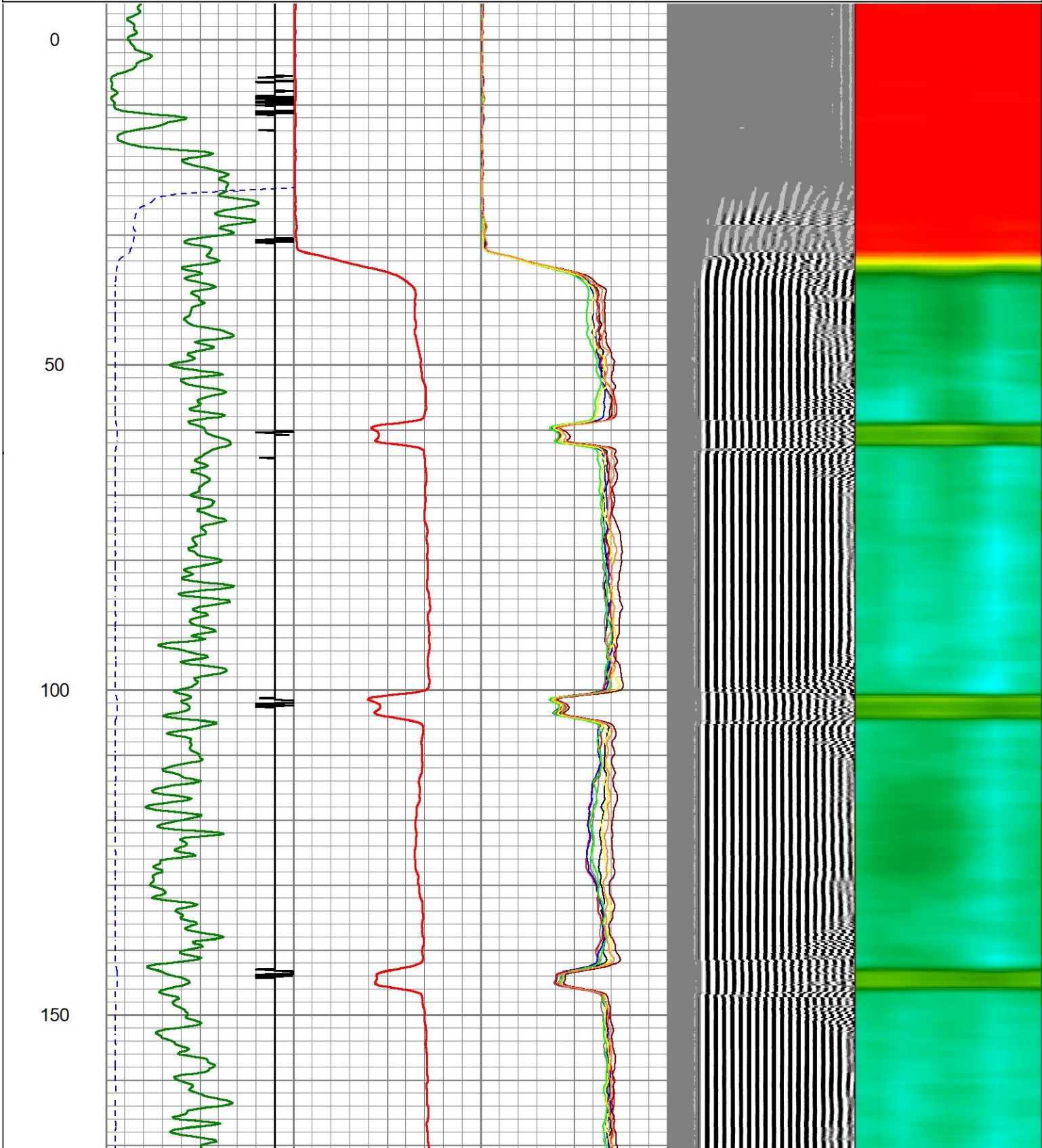
Sensor	Offset (ft)	Schematic	Description	Length (ft)	O.D. (in)	Weight (lb)
			CHD-1_7/16_Cabehead 1 7/16 Cablehead	1.00	1.44	5.00



Dataset: civitas\_box-elder-farms-6-32\_cbl.db: field/well/cbl/main  
 Total length: 18.93 ft  
 Total weight: 105.00 lb  
 O.D.: 2.75 in

Database File civitas\_box-elder-farms-6-32\_cbl.db  
 Dataset Pathname cbl/main  
 Presentation Format ips\_rbtcolorcivitas  
 Dataset Creation Sat Jul 08 15:10:16 2023  
 Charted by Depth in Foot scaled 1:240

LSPD	200	TT (usec)	1000	0	AMP (mV)	100	0	AMPS1	100	200	VDL (usec)	1200	1	Cement Map	8
(ft/min)	-9	CCL	1				0	AMPS2	100						
0	250	0	GR (GAPI)	150			0	AMPS3	100						
		150	GR (GAPI)	400			0	AMPS4	100						
							0	AMPS5	100						
							0	AMPS6	100						
							0	AMPS7	100						
							0	AMPS8	100						

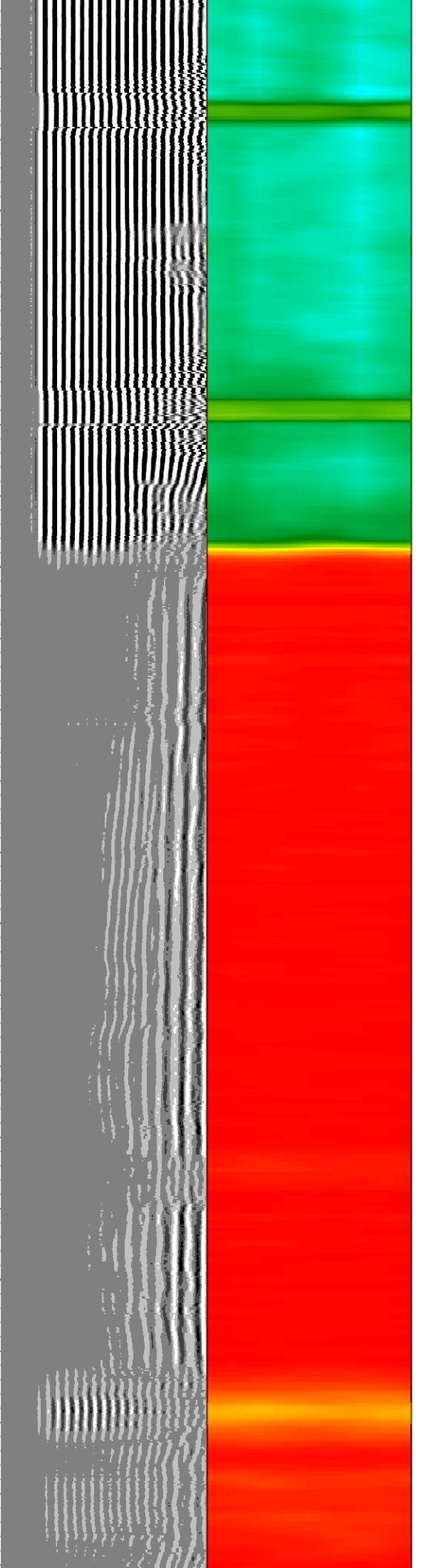
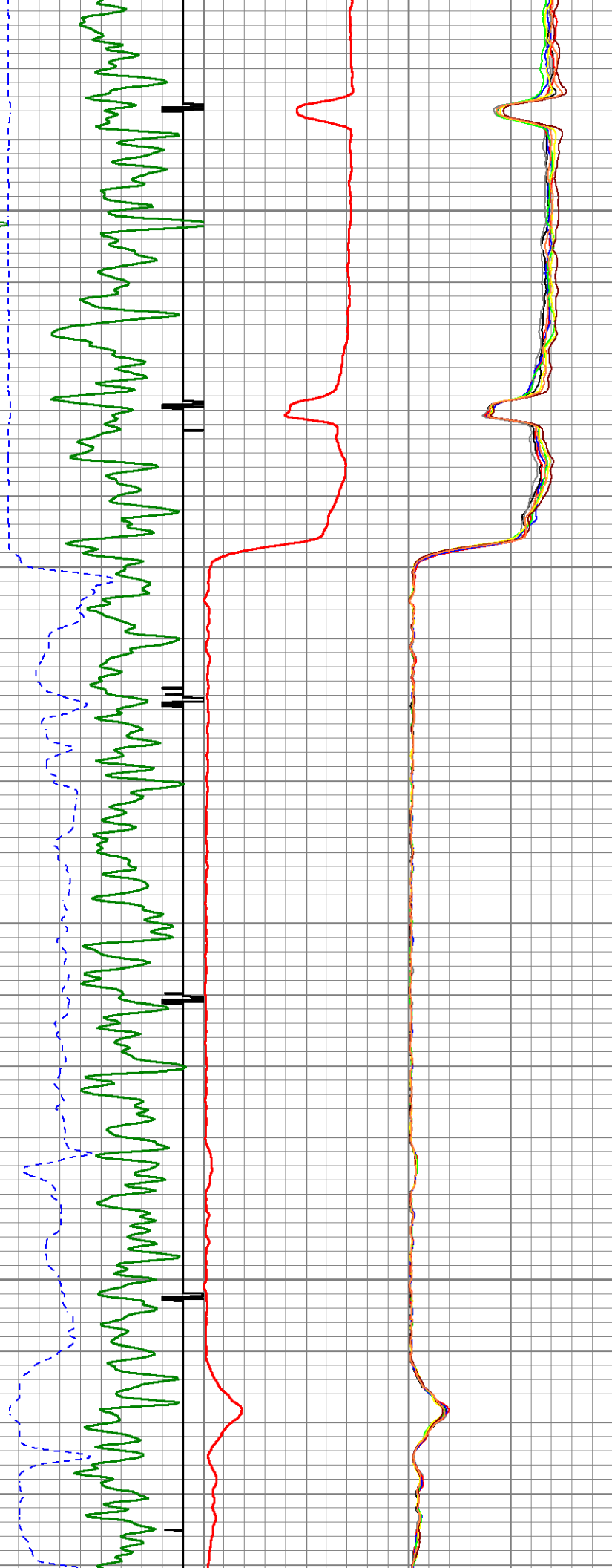


200

250

300

350



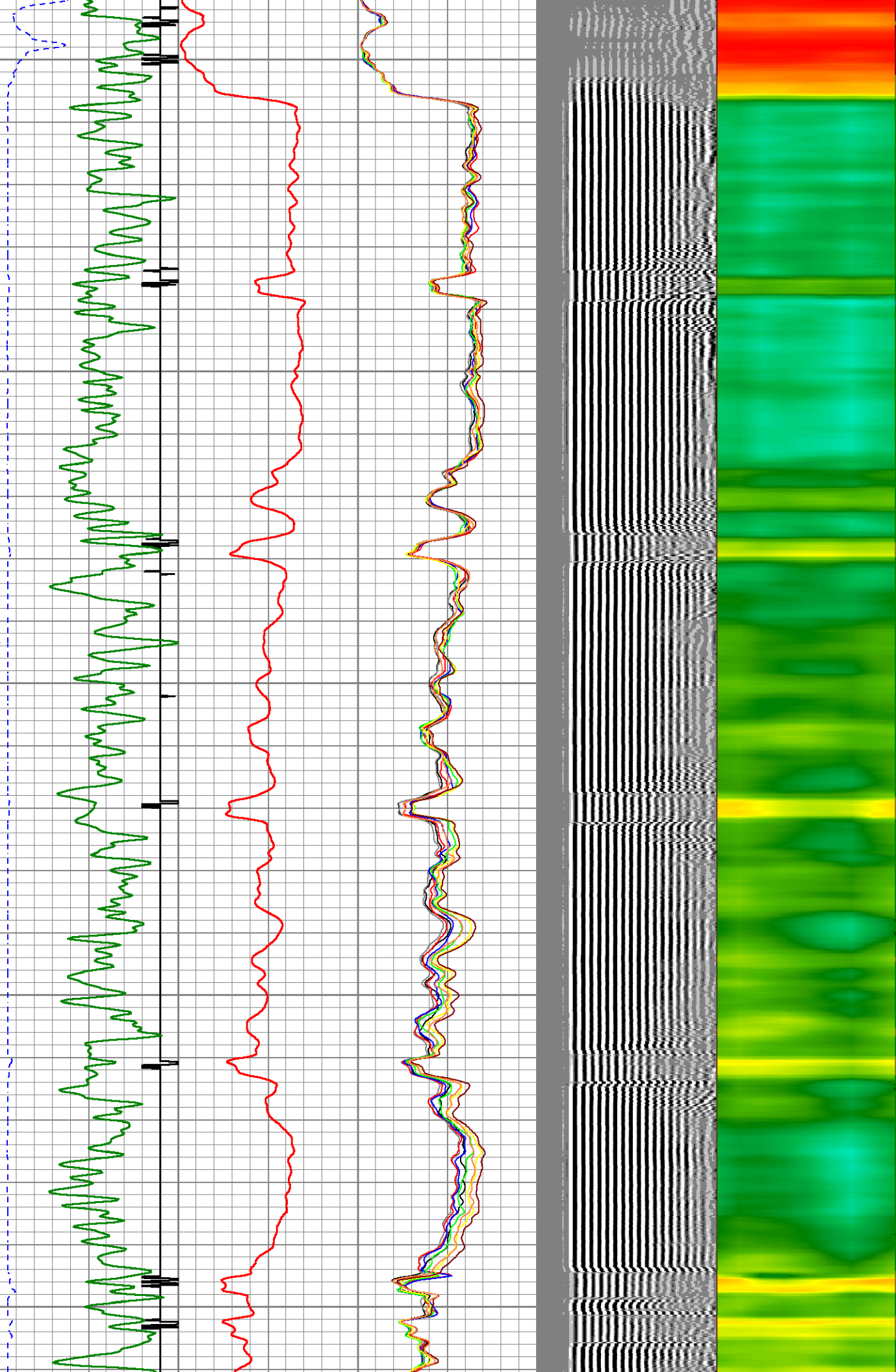
400

450

500

550

600

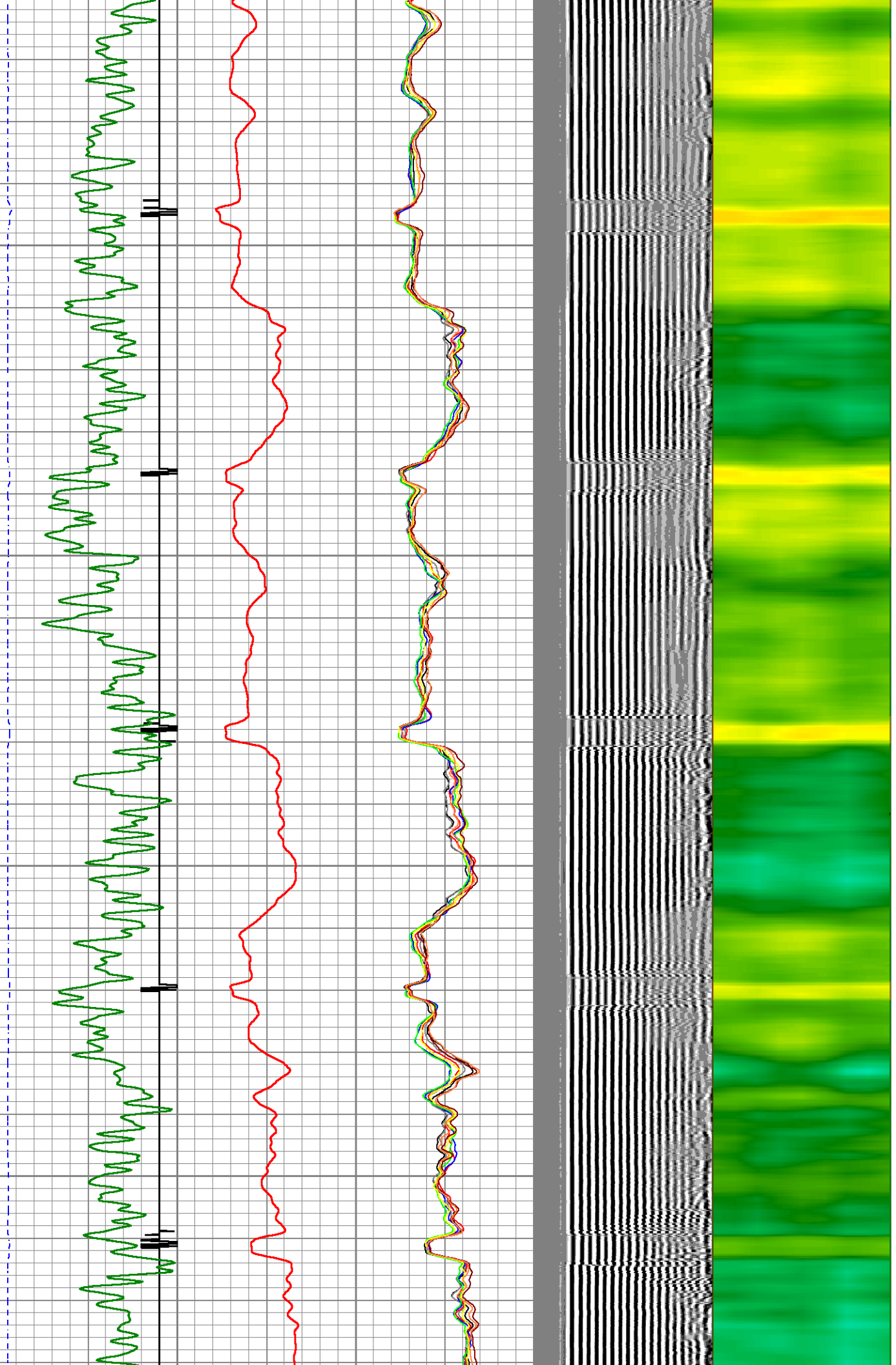


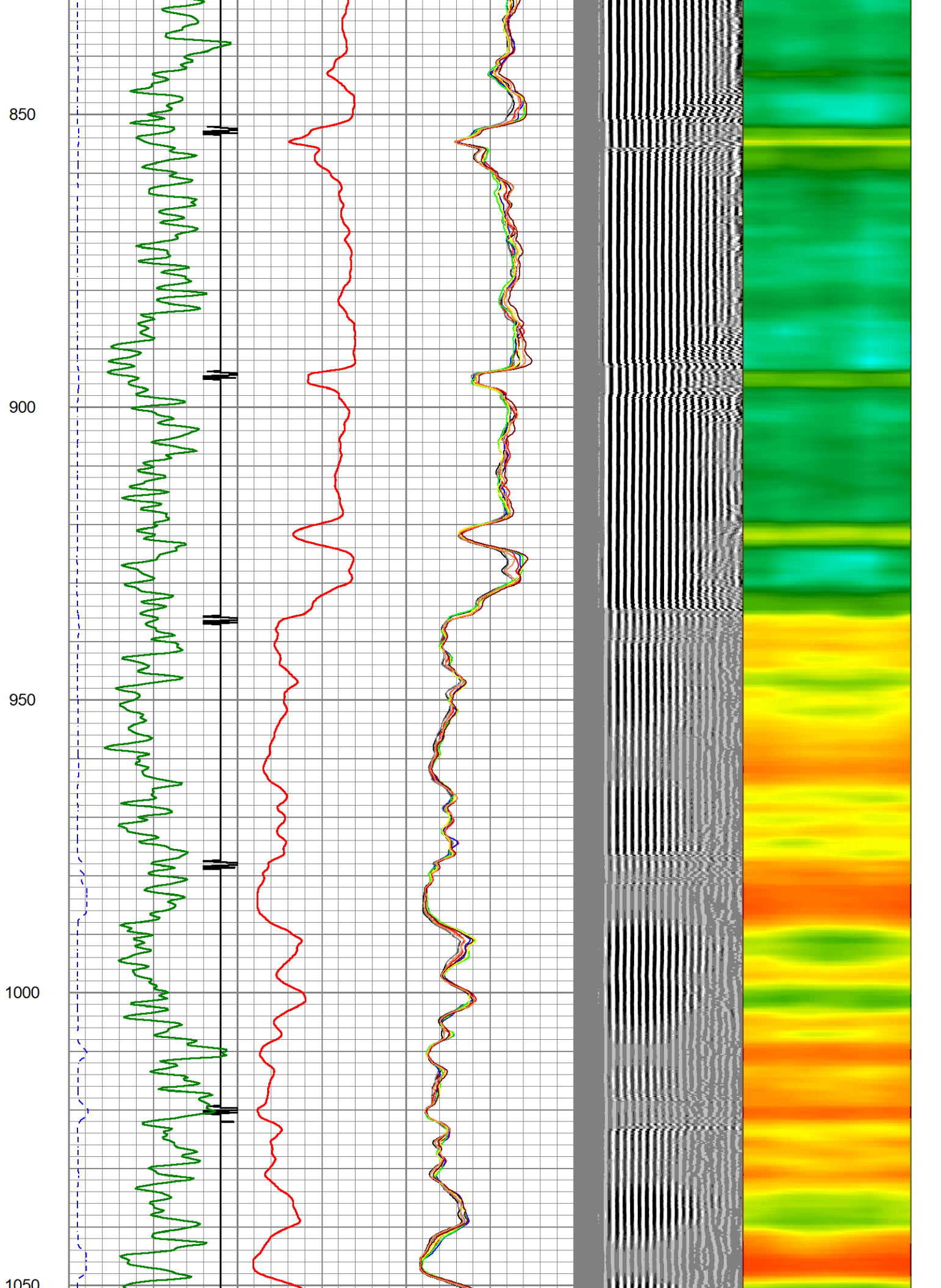
650

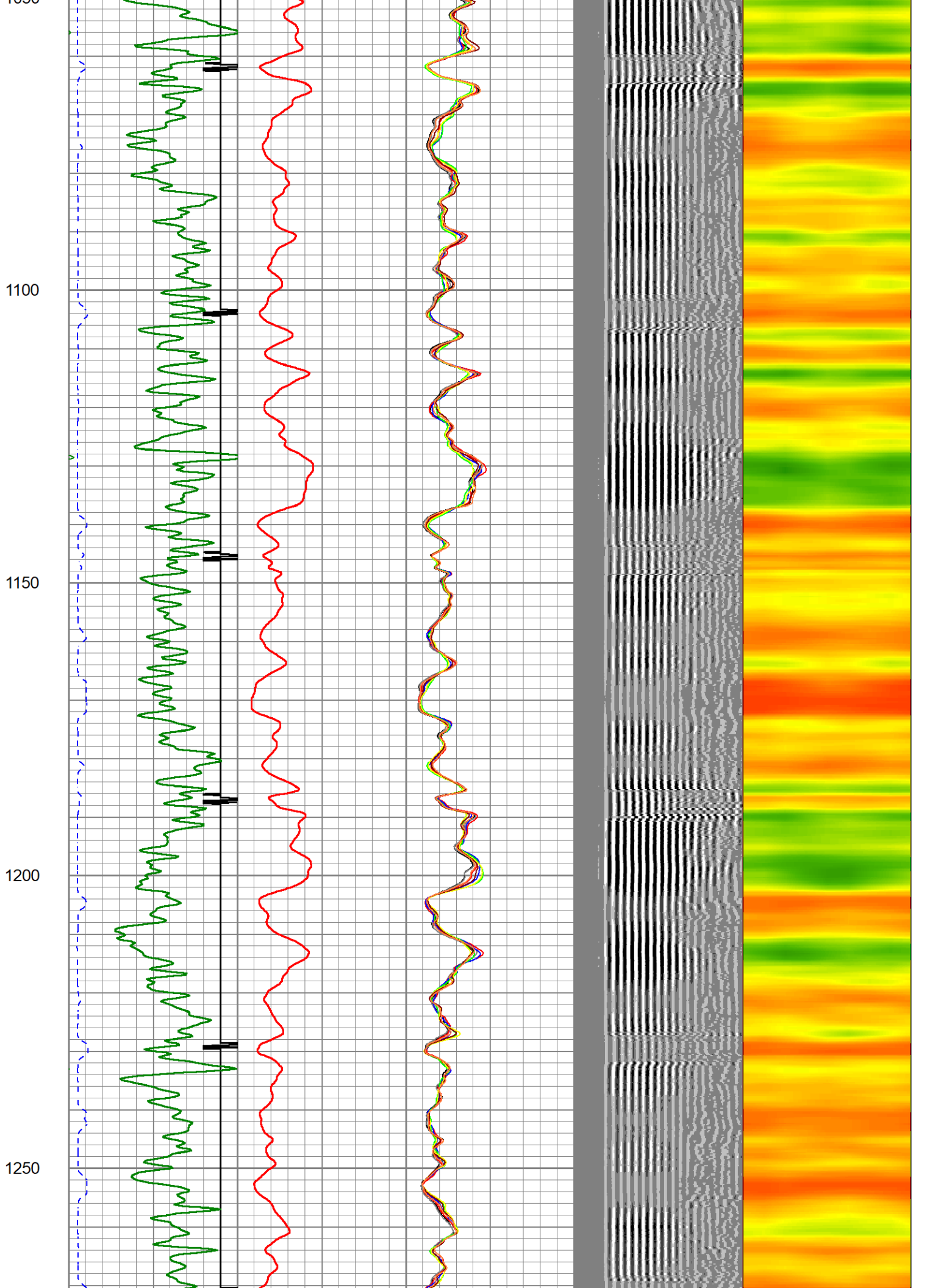
700

750

800





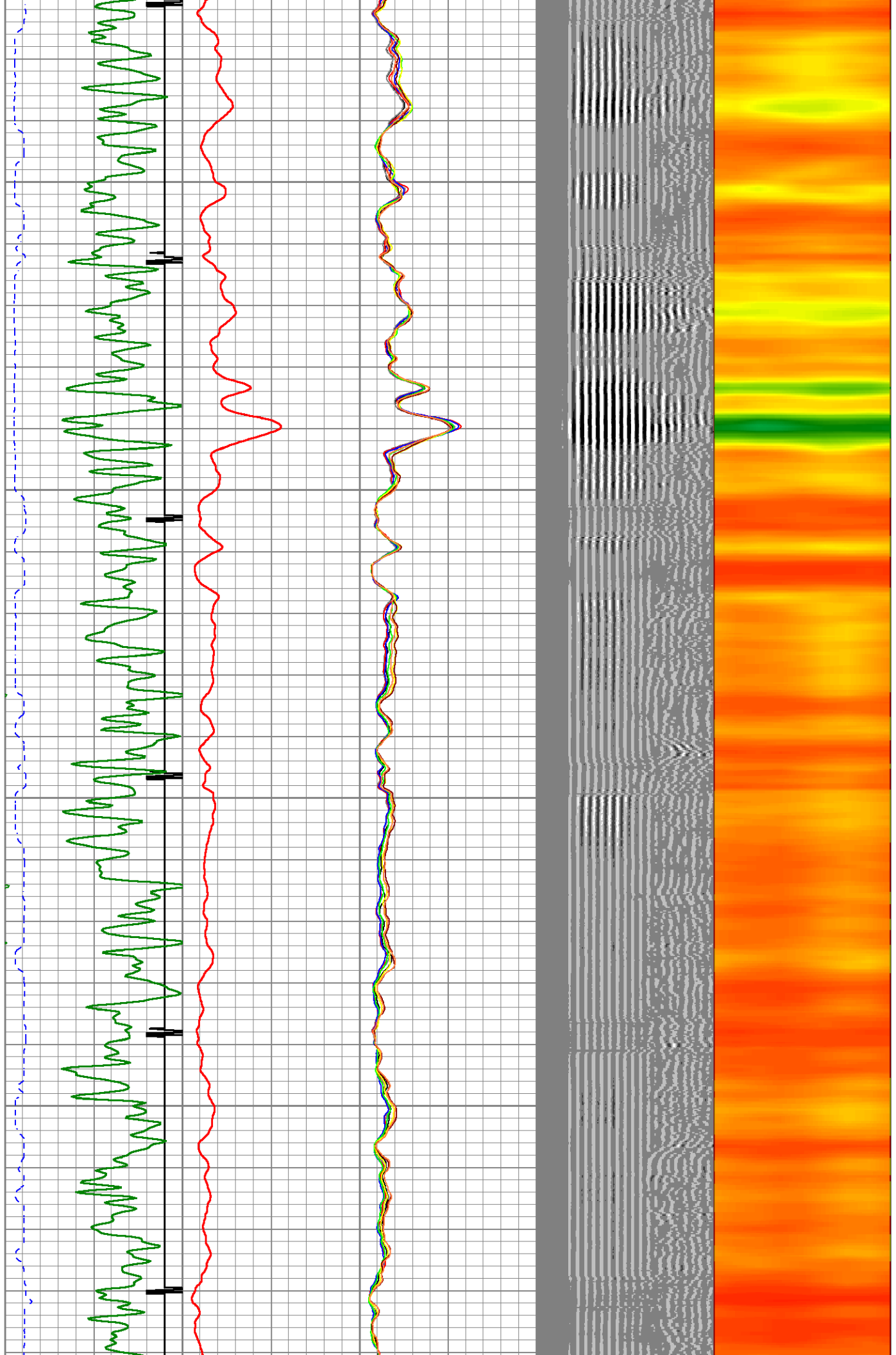


1300

1350

1400

1450



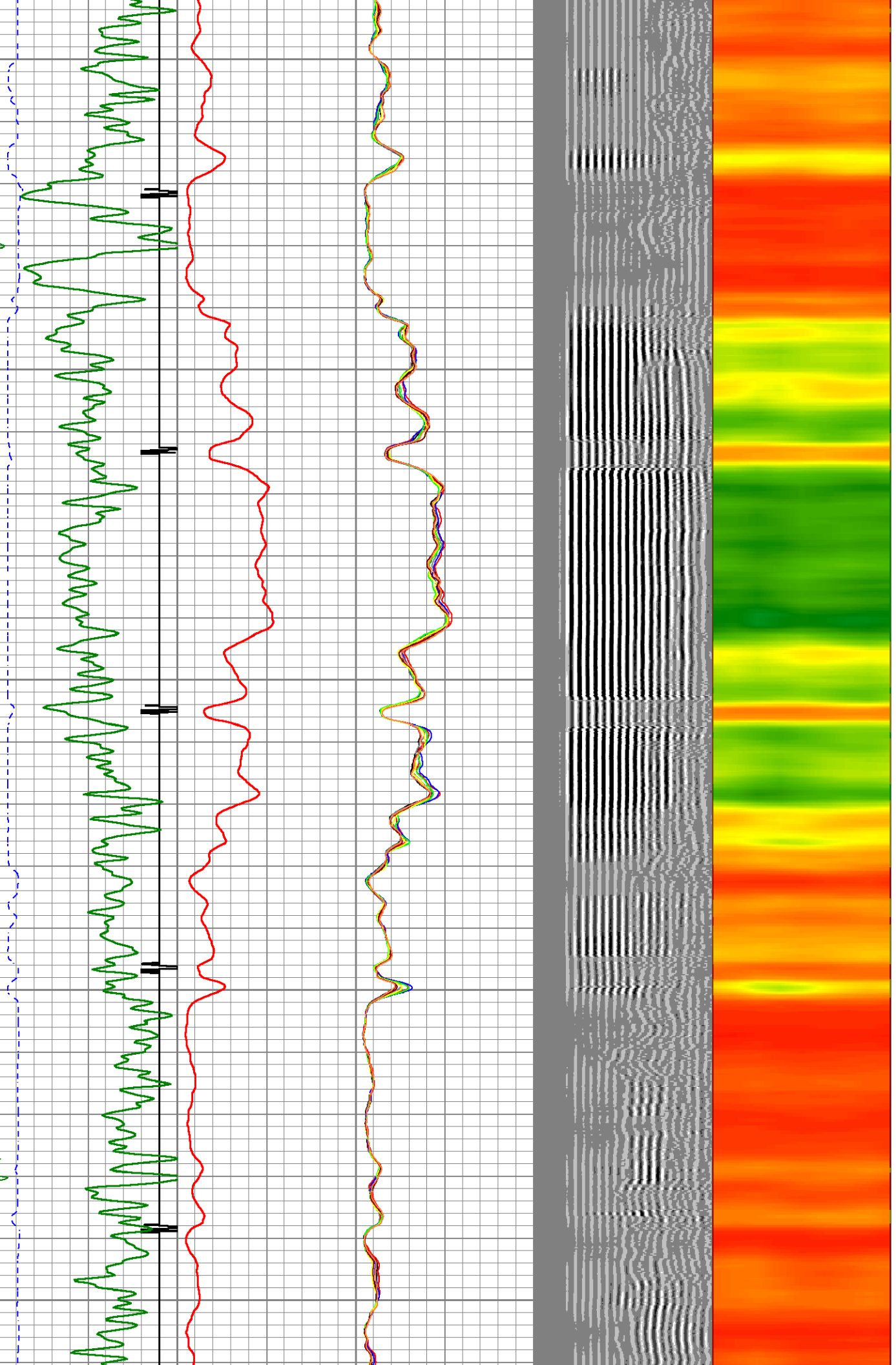
1500

1550

1600

1650

1700

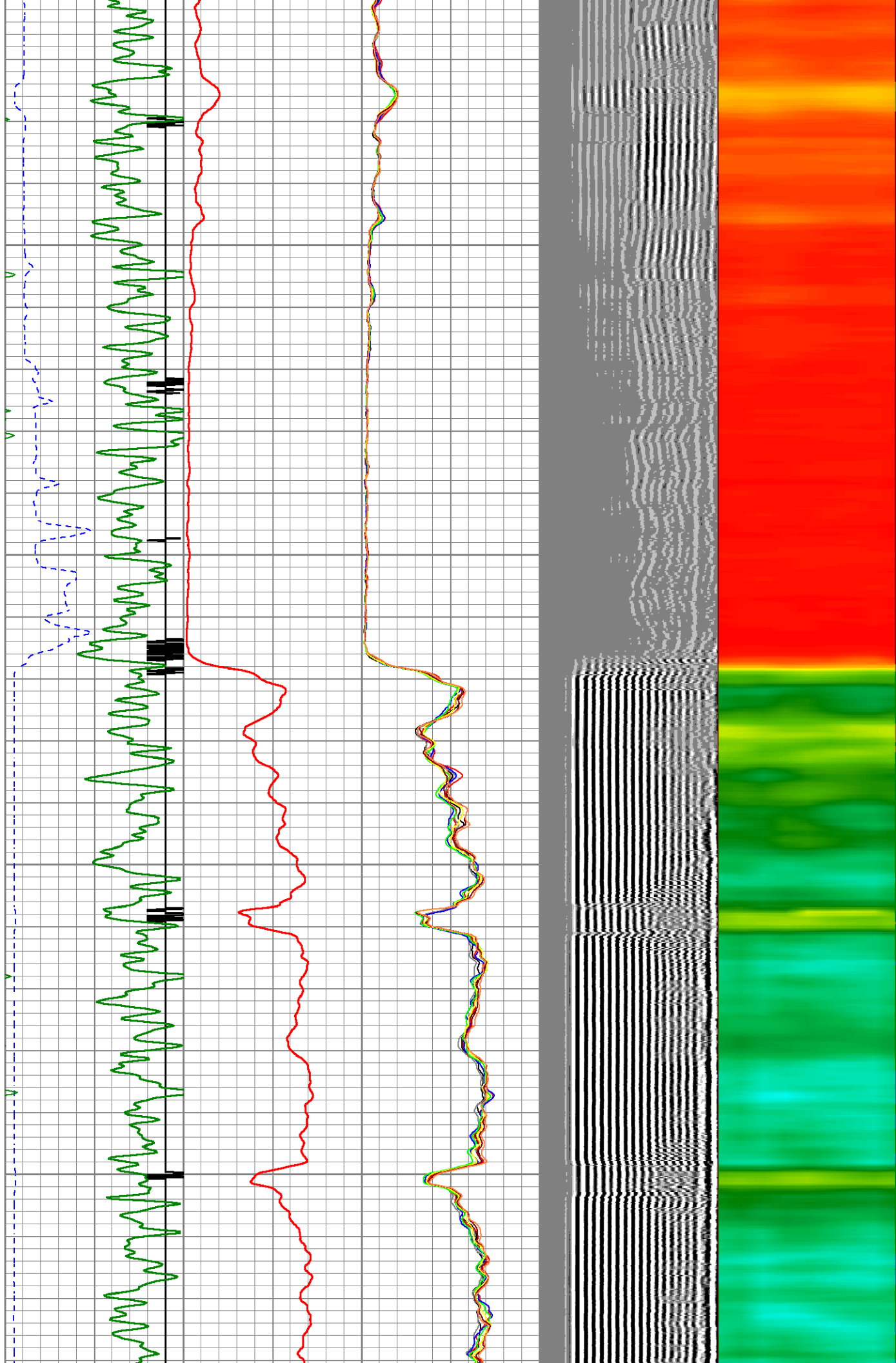


1750

1800

1850

1900



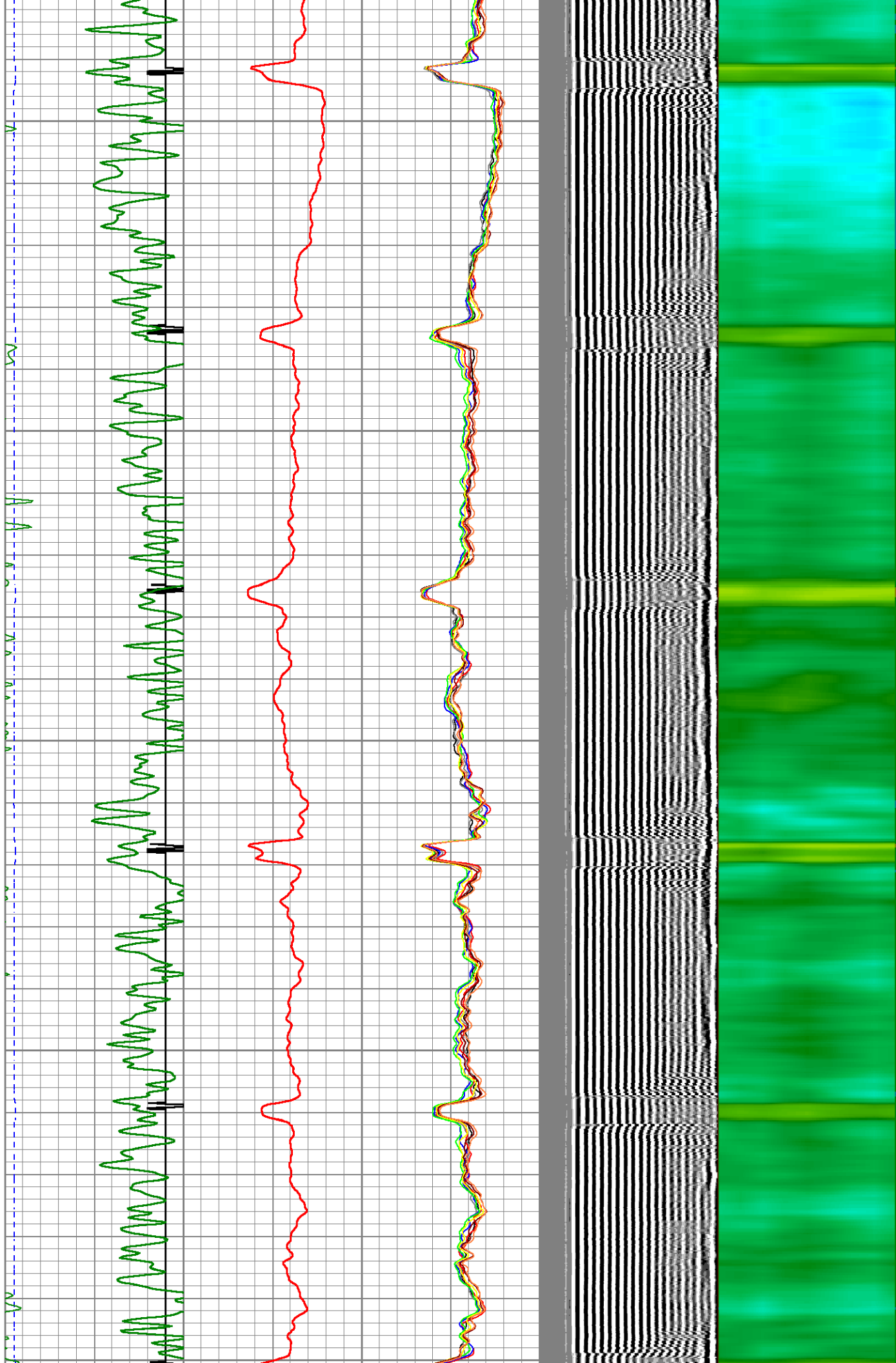
1950

2000

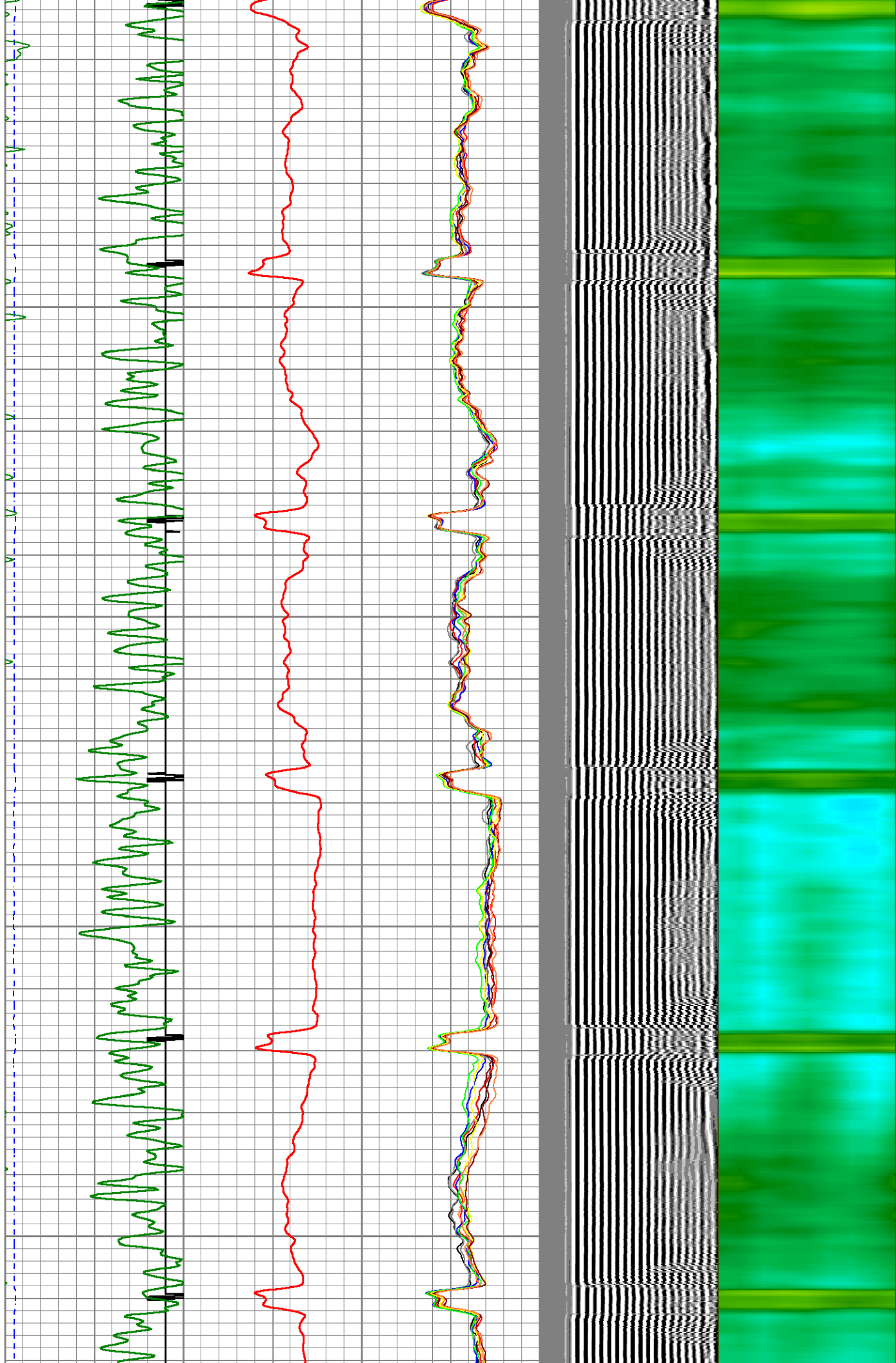
2050

2100

2150



2150  
2200  
2250  
2300  
2350

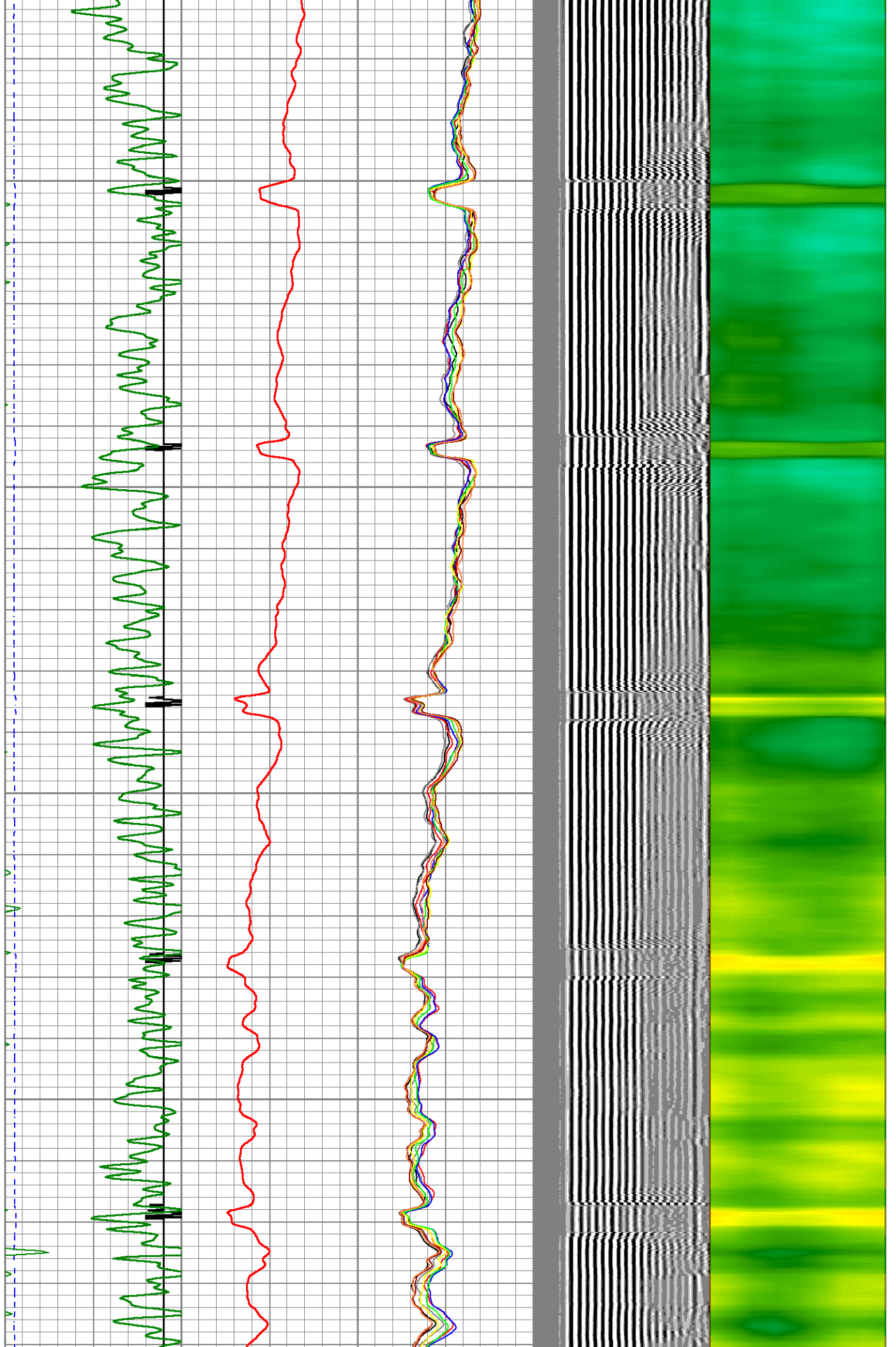


2400

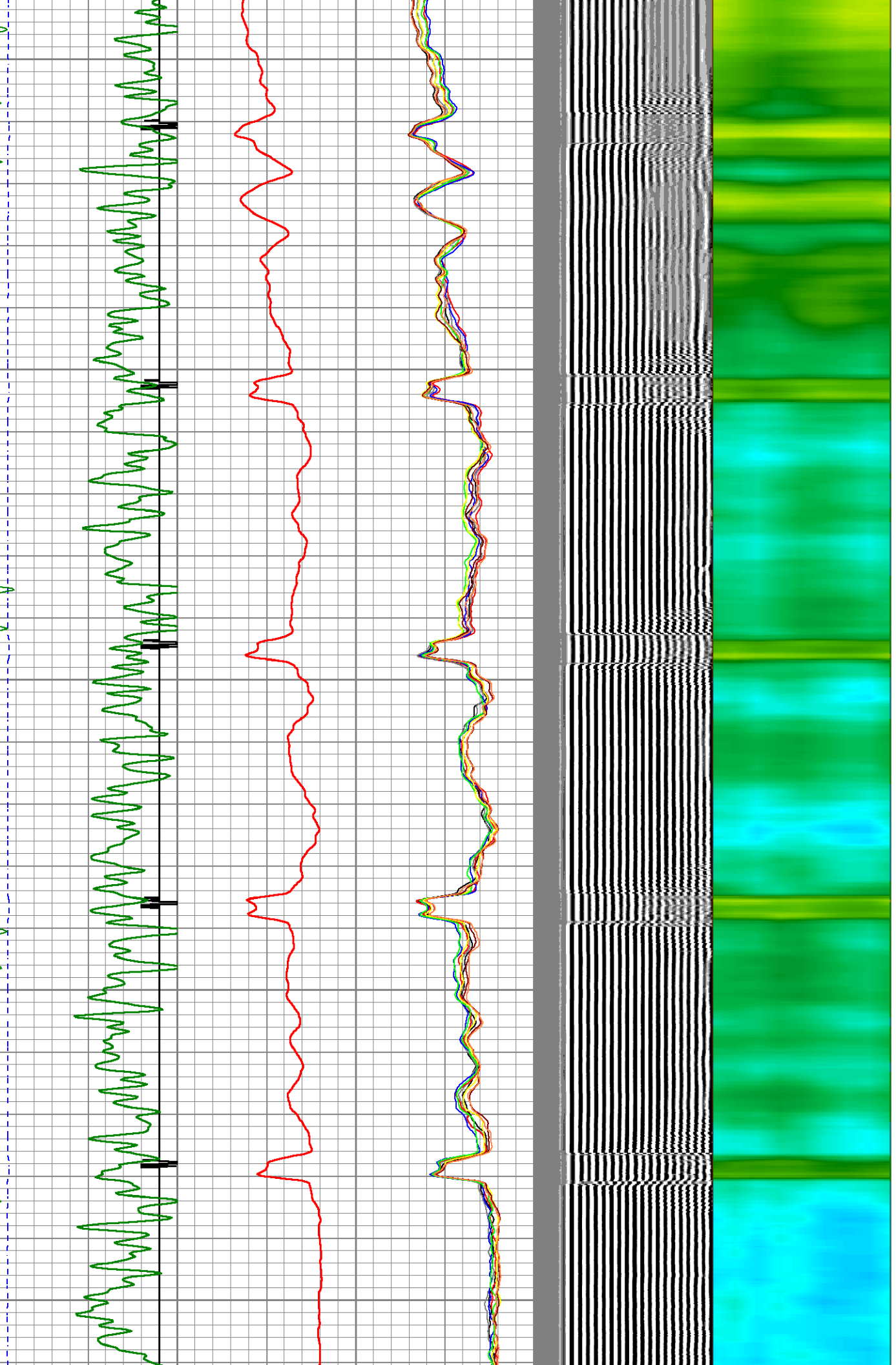
2450

2500

2550



2600  
2650  
2700  
2750  
2800

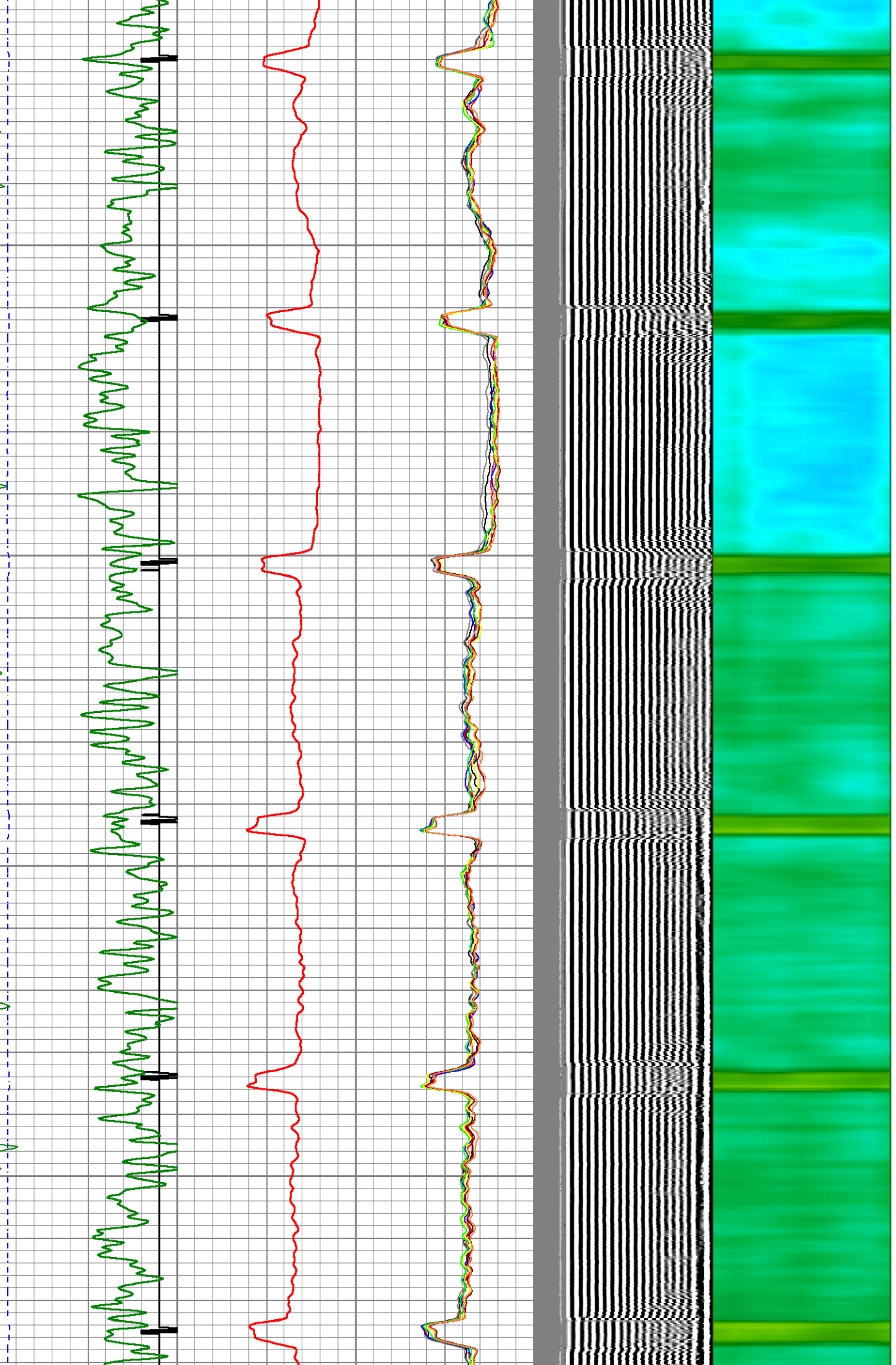


2850

2900

2950

3000



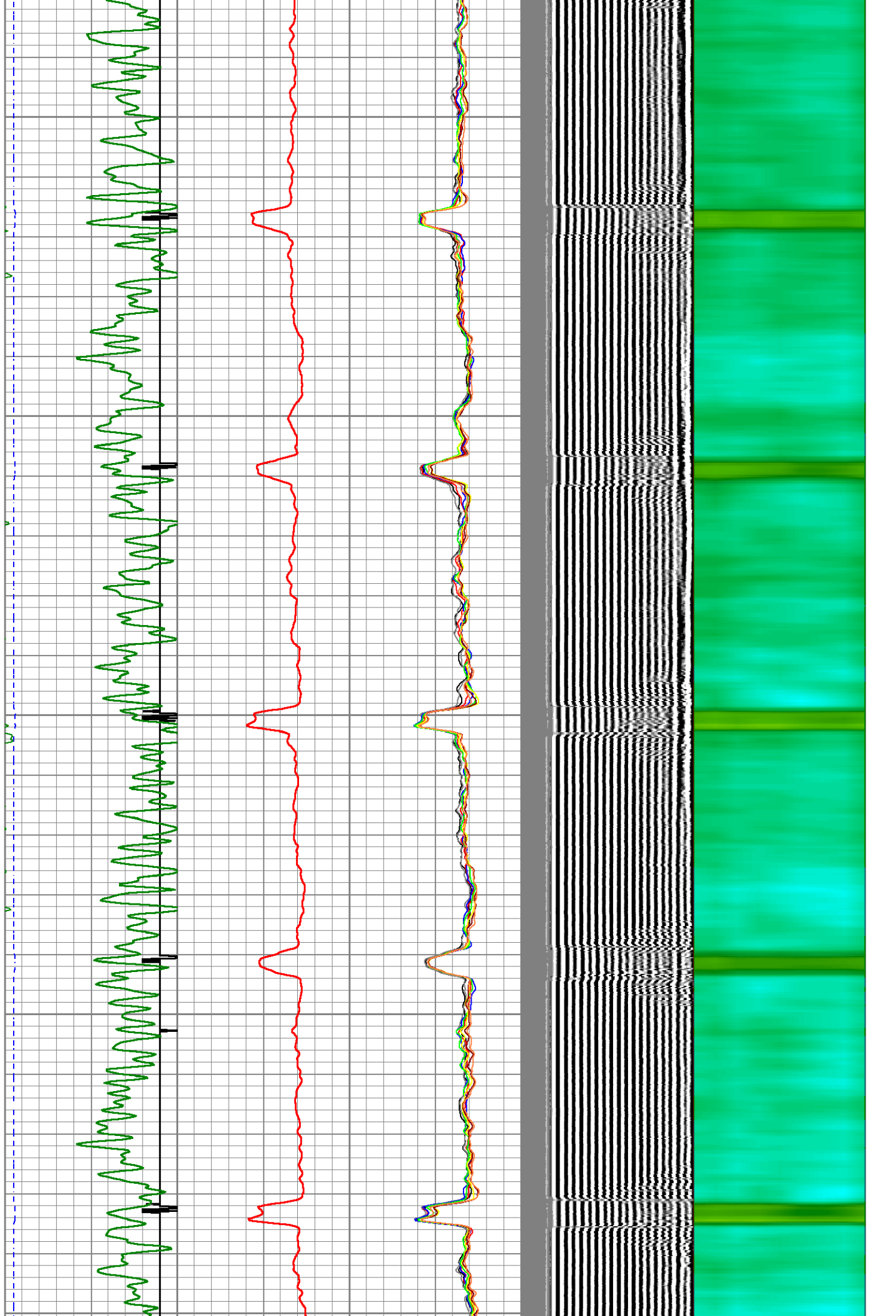
3050

3100

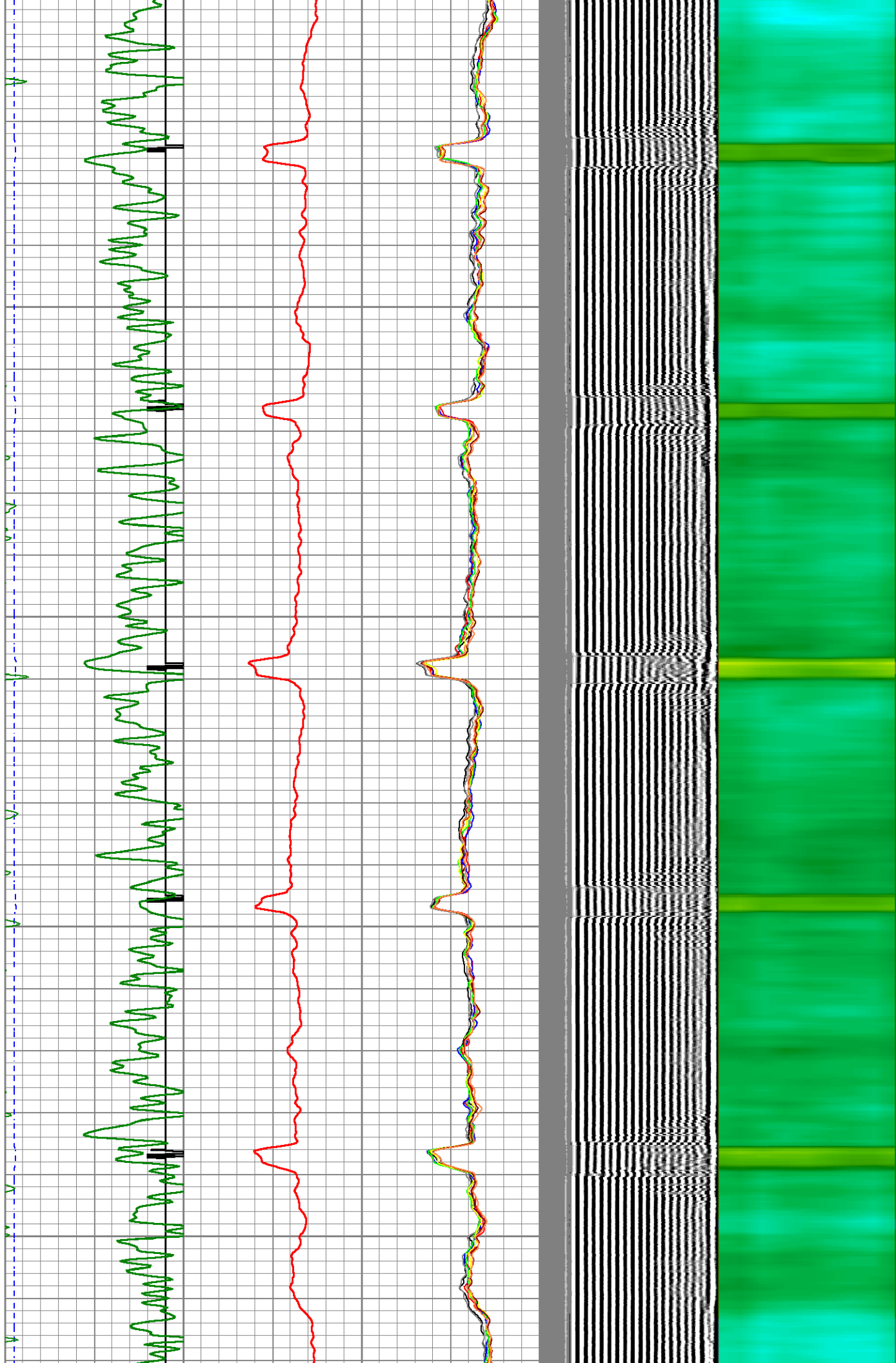
3150

3200

3250



3250  
3300  
3350  
3400  
3450

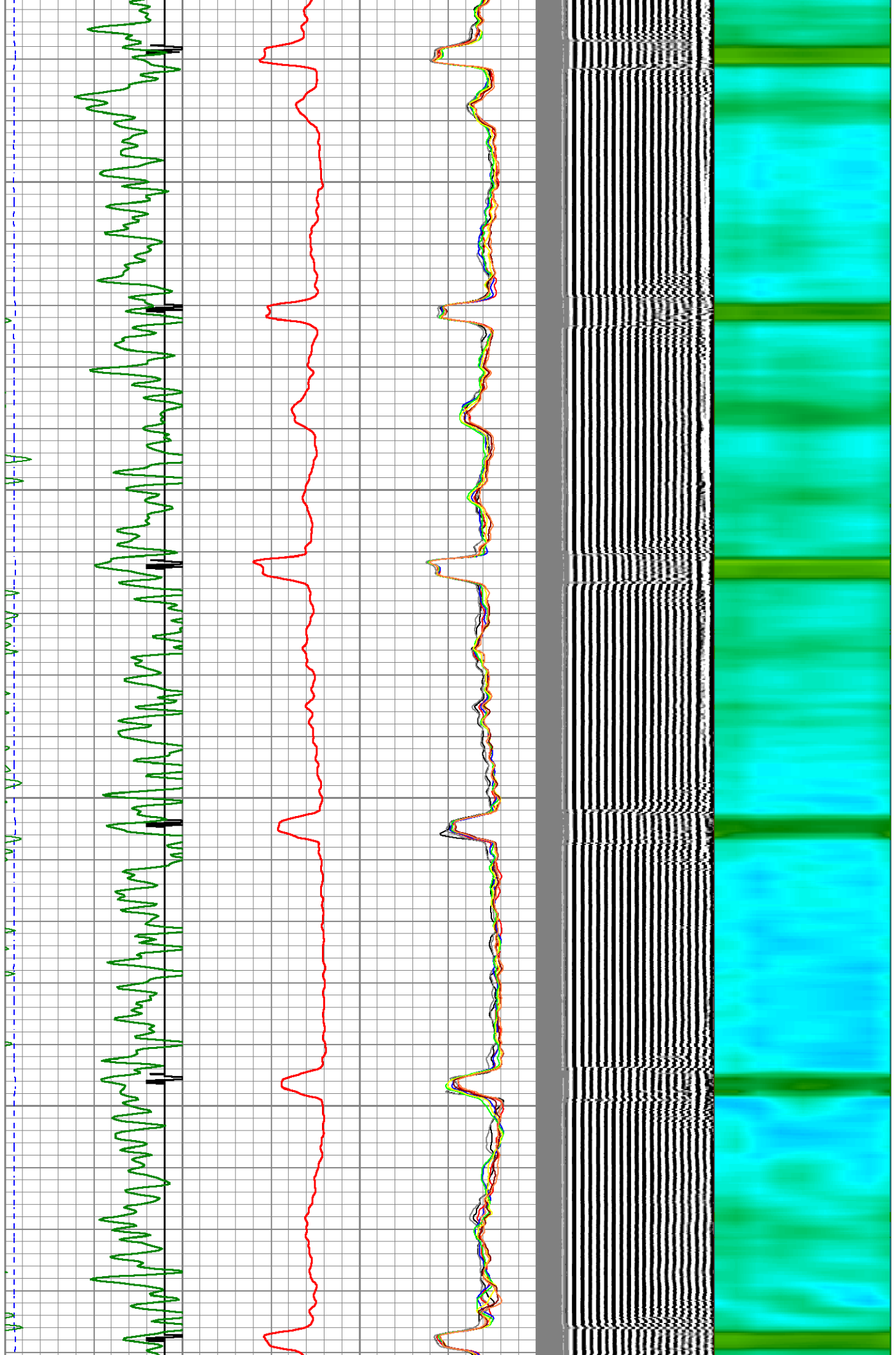


3500

3550

3600

3650



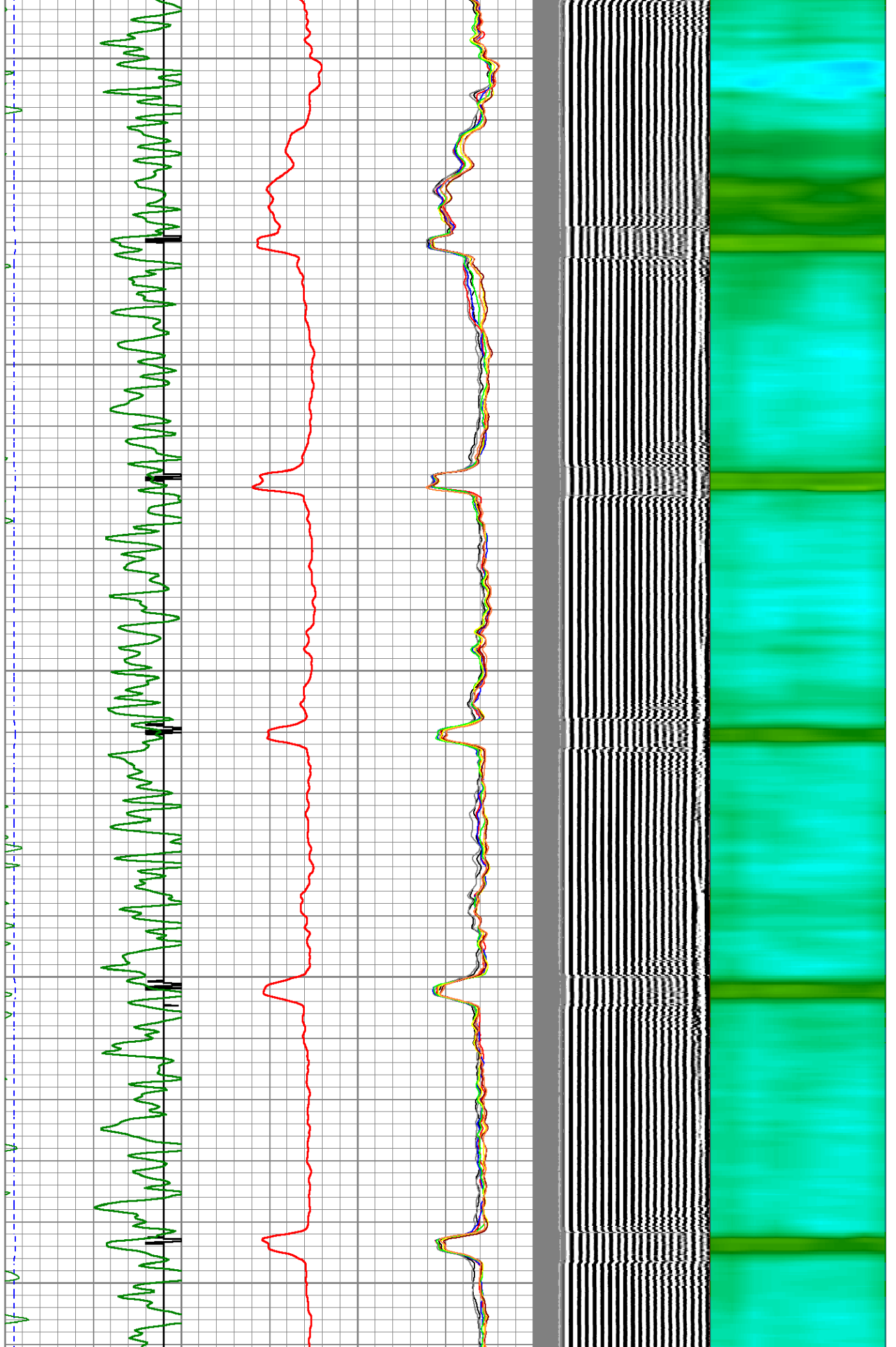
3700

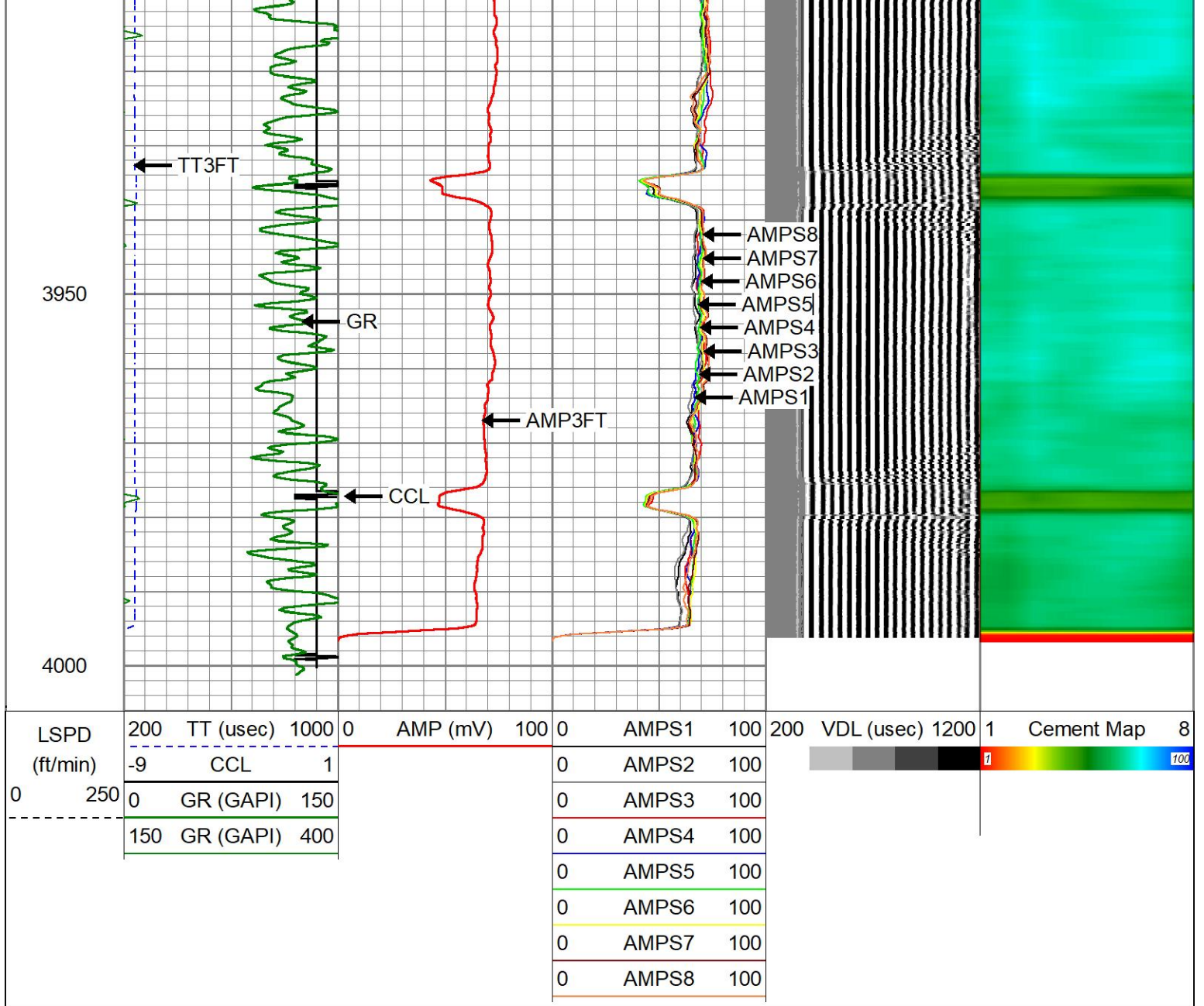
3750

3800

3850

3900





### Calibration Report

Database File civitas\_box-elder-farms-6-32\_cbl.db  
 Dataset Pathname cbl/main  
 Dataset Creation Sat Jul 08 15:10:16 2023

### Gamma Ray Calibration Report

Serial Number: 27GRL10-XXXX  
 Tool Model: 27GRL10  
 Performed: (Not Performed)

Calibrator Value: 1.0 GAPI

Background Reading: 0.0 cps  
 Calibrator Reading: 1.0 cps

Sensitivity: 1.0000 GAPI/cps

### Segmented Cement Bond Log Calibration Report

Serial Number: Greeley Ext Temp  
 Tool Model: 27SBT10

Calibration Casing Diameter: 4.500 in

## Master Calibration, performed (Derived):

	Raw (v)		Calibrated (mv)		Results	
	Zero	Cal	Zero	Cal	Gain	Offset
3'	-0.007	0.801	0.250	81.196	100.200	0.942
CAL	1.114	0.904				
5'	-0.050	0.564	0.250	81.196	131.832	6.809
SUM						
S1	-0.076	0.729	0.000	81.196	100.941	7.644
S2	-0.010	0.792	0.000	81.196	101.187	1.008
S3	-0.008	0.791	0.000	81.196	101.653	0.835
S4	-0.008	0.847	0.000	81.196	94.916	0.782
S5	-0.008	0.880	0.000	81.196	91.396	0.770
S6	-0.045	0.829	0.000	81.196	92.867	4.181
S7	-0.009	0.832	0.000	81.196	96.574	0.851
S8	-0.008	0.796	0.000	81.196	100.922	0.840

## Internal Reference Calibration, performed Thu Mar 10 14:36:00 2022:

	Raw (v)		Calibrated (v)		Results	
	Zero	Cal	Zero	Cal	Gain	Offset
CAL	0.000	0.000	1.114	0.904	1.000	0.000

## Air Zero Calibration, performed Sat Jul 8 14:08:40 2023:

	Raw (v)		Calibrated (v)		Results	
	Zero		Zero		Offset	
3'	0.007		0.000		-0.007	
5'	0.009		0.000		-0.050	
SUM						
S1	0.006		0.000		-0.076	
S2	0.010		0.000		-0.010	
S3	0.008		0.000		-0.008	
S4	0.008		0.000		-0.008	
S5	0.009		0.000		-0.008	
S6	0.008		0.000		-0.045	
S7	0.009		0.000		-0.009	
S8	0.008		0.000		-0.008	



Company	CIVITAS		
Well	BOX ELDER FARMS 6-32		
Field	SECOND CREEK		
County	ADAMS		
State	CO	Country	USA