



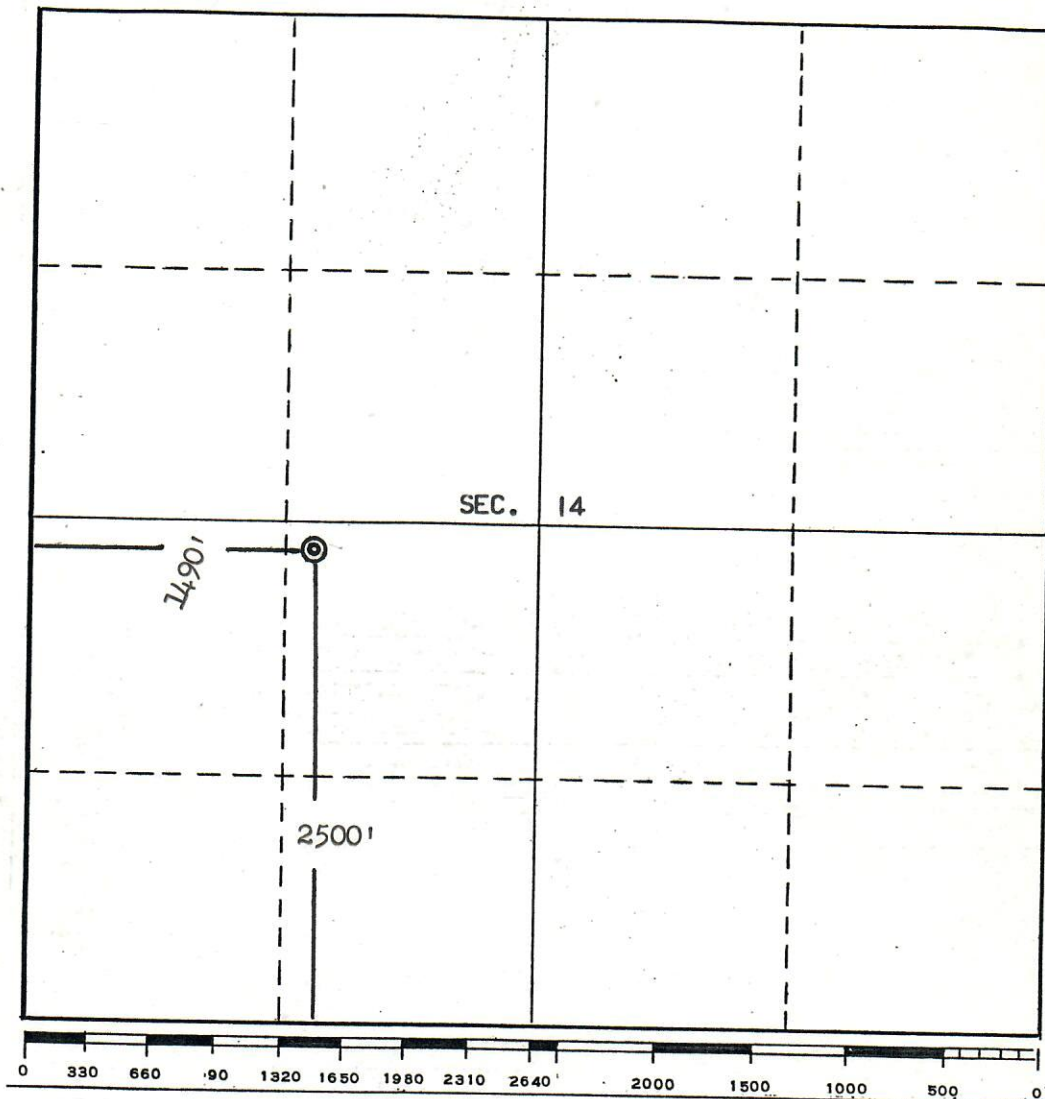
00593102

RECEIVED

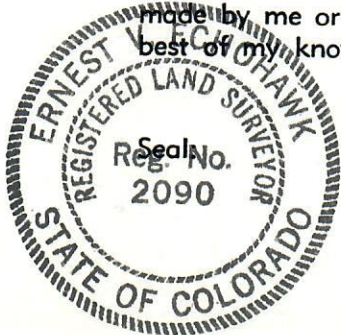
MAY 24 1976

Company Atlantickrichtfieldcompany

COLO. OIL & GAS CONS. COMM.

Well Name & No. Sheep Mountain Unit 8-14Location 2500 feet from the South line and 1490 feet from the West line.Sec. 14, T. 27 S, R. 70 W, OF THE SIXTH PRINCIPAL MERIDIANGround Elevation 8281 Huerfano COUNTY, COLORADO.Surveyed May 19, 1976

This is to certify that the above plat was prepared from field notes of actual surveys made by me or under my supervision and that the same are true and correct to the best of my knowledge and belief.



Ernest V. Echohawk
Registered Land Surveyor
Colorado Reg. No. 2090