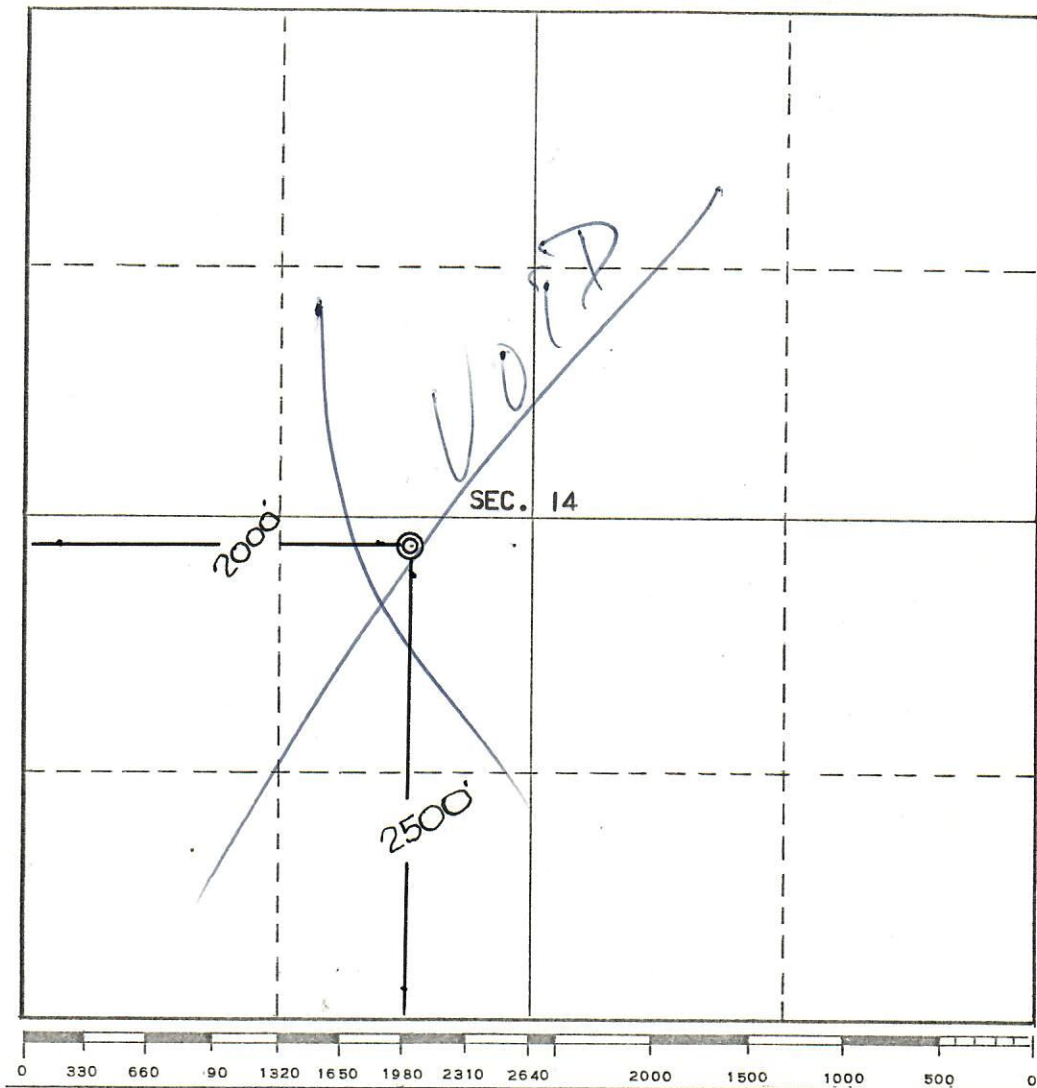


RECEIVED

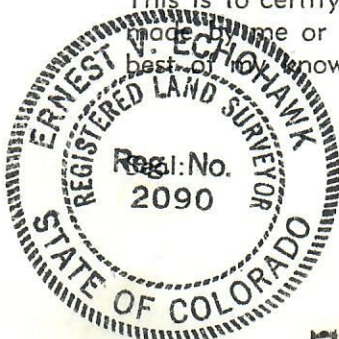
FEB 17 1976

Company Atlantic 00593103

COLO. OIL & GAS CONS. COMM.

Well Name & No. Sheep Mountain Unit 8-14Location 2500 feet from the South line and 2000 feet from the West line.Sec. 14, T. 27 S, R. 70 W, OF THE SIXTH PRINCIPAL MERIDIANGround Elevation 8191 Huerfano COUNTY, COLORADO.Surveyed January 26, 19 76

This is to certify that the above plat was prepared from field notes of actual surveys made by me or under my supervision and that the same are true and correct to the best of my knowledge and belief.



Ernest V. Echohawk
Ernest V. Echohawk
Registered Land Surveyor
Colorado Reg. No. 2090