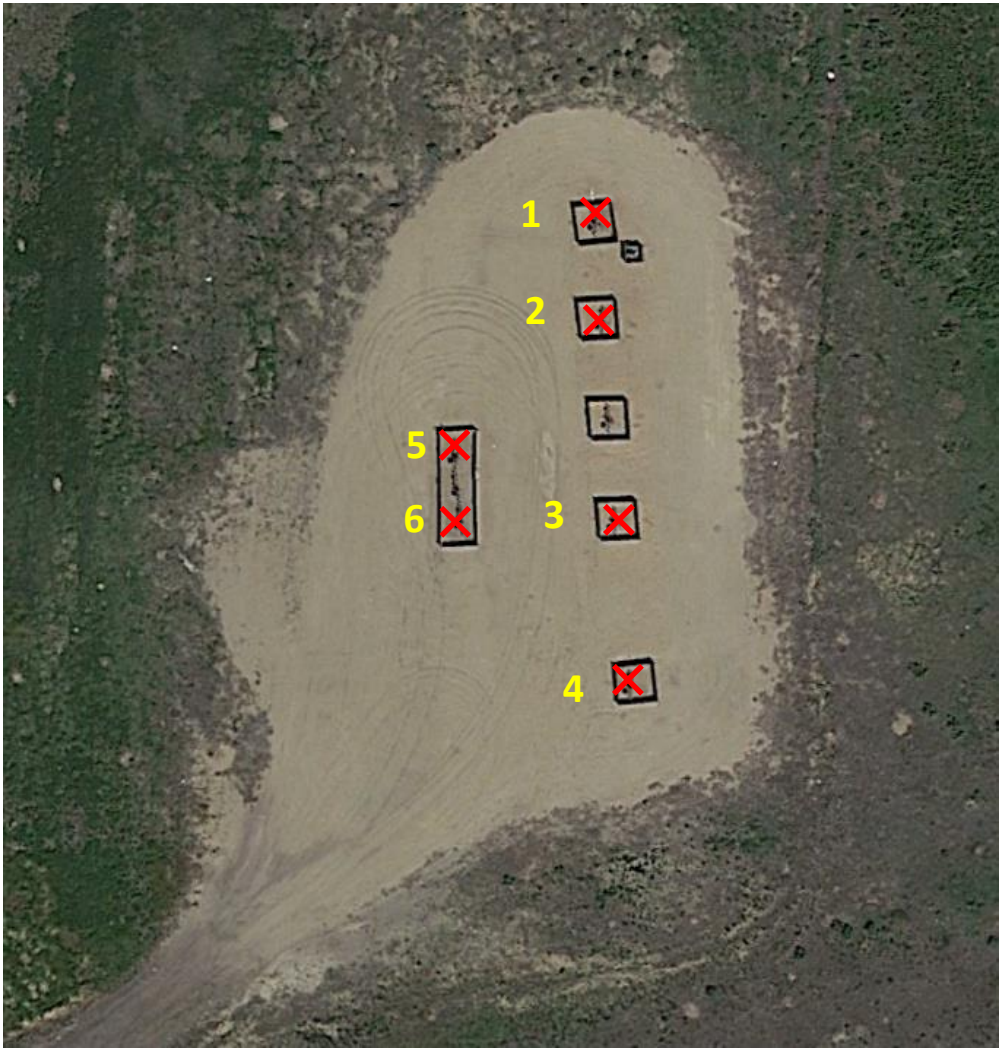


# WANDELL 2N67W 7SWNW (336440) and WANDELL-62N67W 7SWNW (331589): Wellhead Cut/Cap

40.155250, -104.939370  
SWNW Sec. 7 T2N, R67W, 6th PM  
Firestone/Weld County, Colorado  
Crestone Peak Resources (10633)



Equipment to be Removed		
Legend	Equipment On-Site	# Pieces of Equipment
1	WANDELL 11-7 (05-123-21257) 40.155540, -104.939186	1
2	WANDELL 12-7 (05-123-20948) 40.155436, -104.939203	1
3	WANDELL 13-7 (05-123-21258) 40.155271, -104.939177	1
4	WANDELL 23-7 (05-123-22397) 40.155121, -104.939170	1
5	WANDELL 2-0-7 (05-123-31220) 40.155314, -104.939370	1
6	WANDELL 4-4-7 (05-123-32139) 40.155261, -104.939365	1

**Legend**  
Site Investigation Points  
X Visual Inspection and Soil Sample

# WANDELL 2N67W 7SWNW (336440) and WANDELL-62N67W 7SWNW (331589): Off-Location Flowline Abandonment

40.155250, -104.939370  
SWNW Sec. 7 T2N, R67W, 6th PM  
Firestone/Weld County, Colorado  
Crestone Peak Resources (10633)

Flowline Unique OperFeatID	Line Type	Start Location	Start Location Latitude	Start Location Longitude	End Location	End Location Latitude (Cut Point)	End Location Longitude (Cut Point)	Approx. Length to Abandon (ft)
12321257_FL	Multiphase	WANDELL 11-7 Wellhead	40.155540	-104.939186	Separator	40.157619	-104.937975	1050
12320948_FL	Multiphase	WANDELL 12-7 Wellhead	40.155436	-104.939203	Separator	40.157619	-104.937975	1080
12322397_FL	Multiphase	Tie In	40.155121	-104.939170	Separator	40.157619	-104.937975	1145
12331220_FL	Multiphase	WANDELL 2-0-7 Wellhead	40.155314	-104.939370	Separator	40.157619	-104.937975	1115
12332139_FL	Multiphase	WANDELL 4-4-7 Wellhead	40.155261	-104.939365	Separator	40.157619	-104.937975	1115



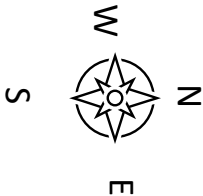
Legend

Site Investigation Points

X

Visual Inspection and Soil Sample

Potholes will be dug every 250 feet along the flowline path. These observation points will be photographed and field screened. Additional soil samples will be collected when flowline repairs are observed, changes in flow direction, or when there is a change in the flowline material type.





# WANDELL 2N67W 7SWNW (336440) and WANDELL-62N67W 7SWNW (331589): ¼ Mile Buffer - Wildlife and Hydrology Map

40.155250, -104.939370  
SWNW Sec. 7 T2N, R67W, 6th PM  
Firestone/Weld County, Colorado  
Crestone Peak Resources (10633)

Legend

Well (API Spot)

Water Well

Flowline Start/End Points

Rivers/Streams/Lakes

Receptor	DWR Receipt (Permit)	Distance (ft)	Direction	Well Depth(ft)	Static Water Level (ft)
Seasonal Ditch	N/A	315	N	N/A	Surface
Irrigation Well (Abandoned) Record from 1972	9062300 (15943-F)	690	NW	52	19

NO HPH WITHIN ¼ MILE

The figure is an aerial map of a residential and agricultural area. A large black circle represents a ¼ mile buffer around a central point. Several labels are overlaid on the map: 'DWR Receipt # 9062300' is in a white box near the top center. 'Seasonal Ditch' is in a white box near the top right. 'Flowlines END POINT PAD' is in a white box near the center right. 'Flowlines START POINT PAD' is in a white box near the bottom center. Numerous well locations are marked with red dots and labeled: 'Borgmann U01-18J1' (top left), 'HALL 41-12' (top left), 'POG U 12-1' (top left), 'GREGERSON 1' (top left), 'HALL 42-12' (middle left), 'POG U 12-3' (middle left), 'GREGERSON 42-1' (middle left), 'POG U 12-4' (bottom left), 'WANDELL 2A-7H D267' (center), 'WANDELL 2C-7H D267' (center), 'WANDELL 4-4-7' (center), 'WANDELL 13-7' (center), 'WANDELL 13-7' (center), 'WANDELL 23-7' (center), 'WANDELL 21-7' (top right), 'WANDELL 24-7' (top right), 'WANDELL 32-7' (top right), 'WANDELL V 7-7' (top right), and 'WANDELL 32-7' (top right). A seasonal ditch is shown as a blue line running horizontally across the middle. Flowlines are shown as blue lines connecting the 'START' and 'END' point pads.

## Crestone Peak Resources (10633)

