



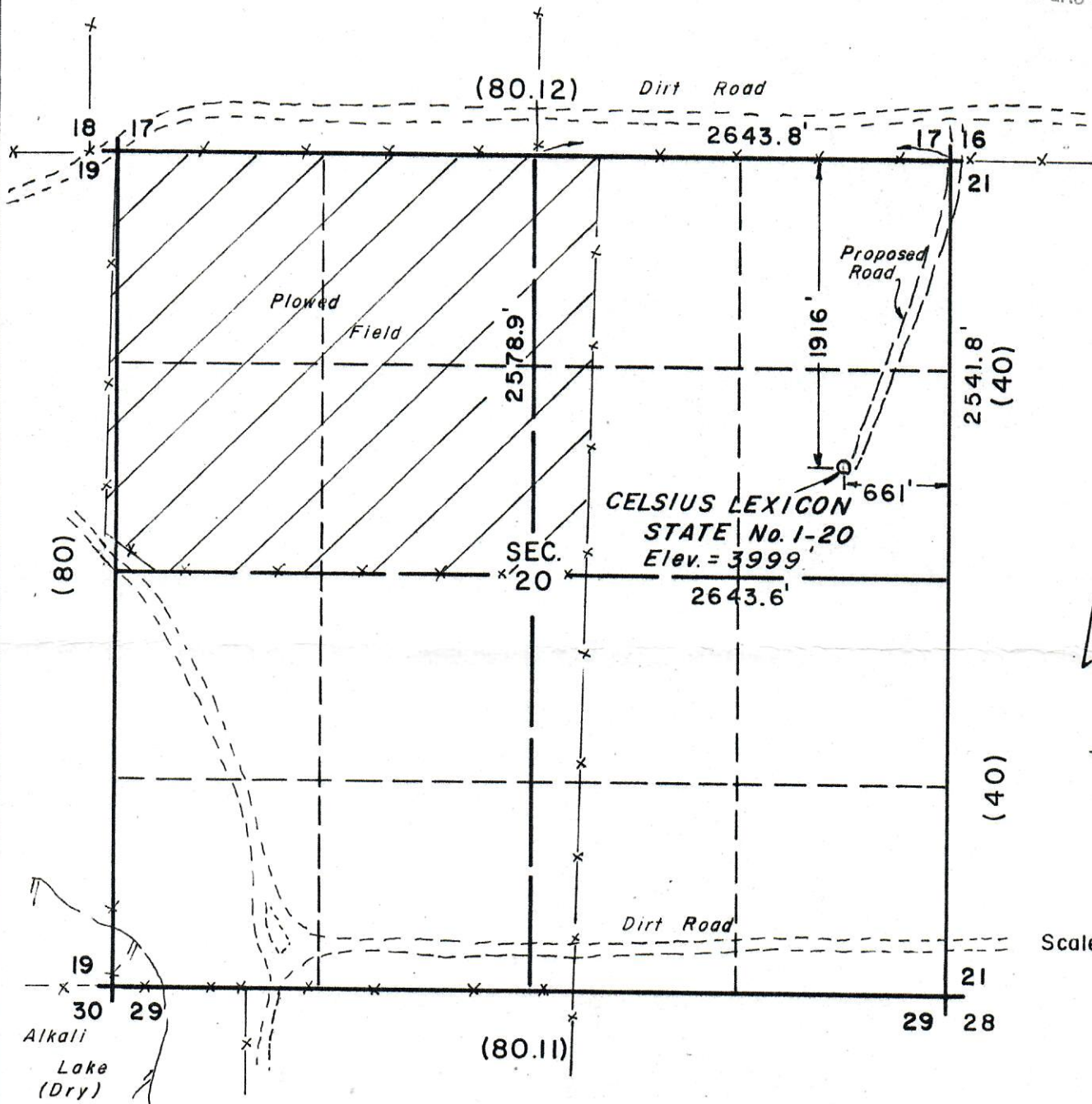
WELL LOCATION MAP

CELSIUS LEXICON STATE No.1-20

RECEIVED

NOV 1 1982

COLO. OIL & GAS CONS. COMM.



LEGEND

○ Well site, set pin and steel post

"()" Indicate G.L.O. information in chains, 1 chain = 66'

NOTES:

1. Well site elevation is based on spot elevation at W 1/4 corner, Sec. 20 as shown on U.S.G.S. Alkali Lake, Colo. Quad map, 1968
2. All surface is prairie grass & sandy soil except as shown.

CERTIFICATE OF SURVEY

I, William H. Ramsey, a Registered Land Surveyor in the state of Colorado, do hereby certify that on the 20th day of October, 1982, the survey shown hereon was conducted by me or under my direction, and the plat hereof accurately represents said survey.

William H. Ramsey
Registered Land Surveyor No. 18473
State of Colorado

10-21-82
Date



WESTERN STATES
SURVEYING, Inc.
7030 So. Yosemite St. Suite 204
Englewood, Colorado 80112 (303) 694-0656

CELSIUS ENERGY COMPANY
CELSIUS LEXICON STATE No.1-20
SE 1/4, NE 1/4 SEC. 20, T.19S., R.47W., 6th P.M.
KIOWA COUNTY, COLORADO
Job No. 8218-001

Sheet 1 of 2