

Well Latitude / Longitude:
40.243445/-104.603195

Flowline Point A (Lat / Long):
40.243444/-104.603184

Flowline Point B (Lat / Long):
40.242299/-104.608335

Flowline Length (ft):
1531

Flowline Abandonment Type:

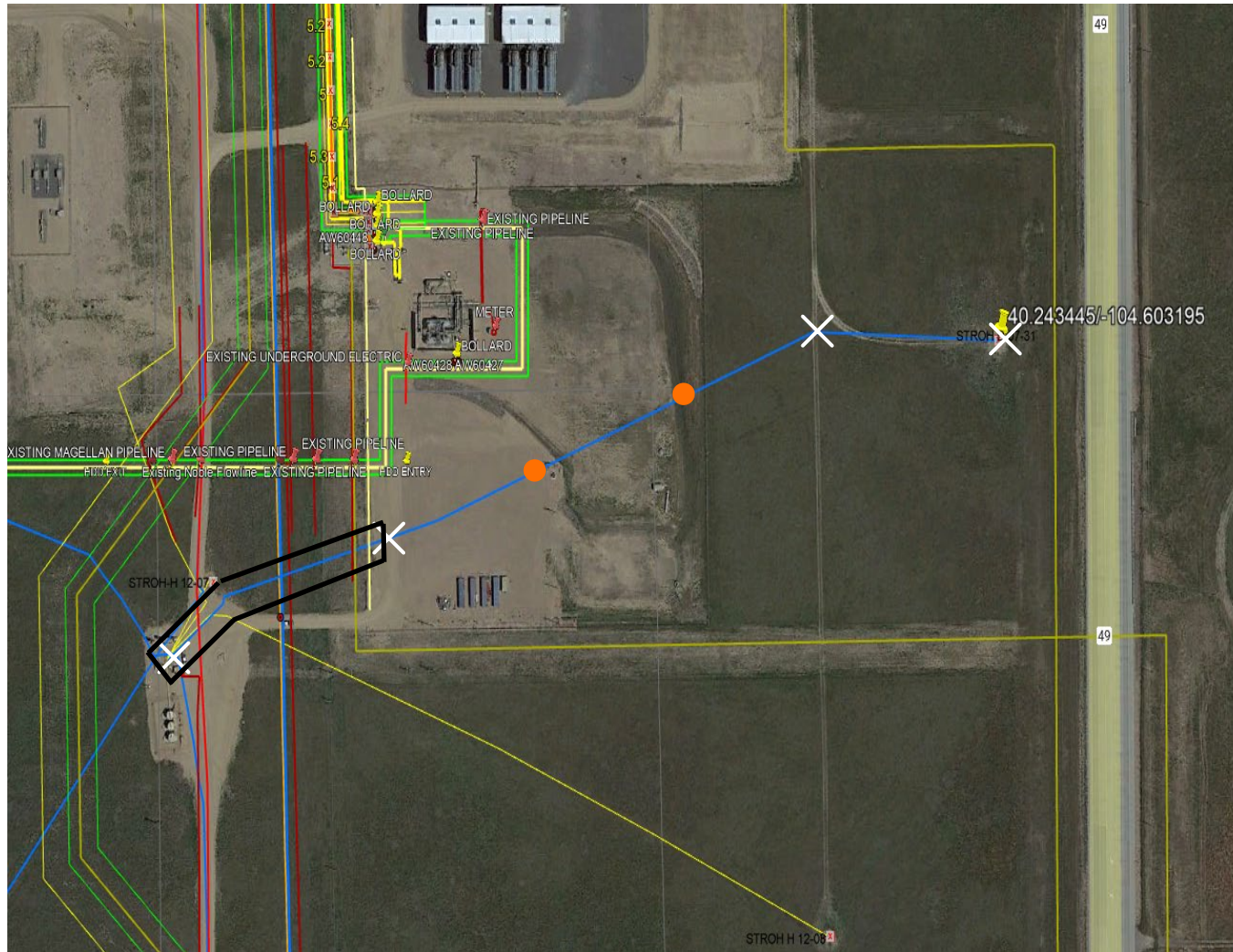
Partial removal due to crosses DCP gas plant, multiple pipeline conflicts and active tank battery

Comments:

X = Proposed Soil Sample Location

□ = Area of Conflict, Proposed Flowline Abandon-in-Place Area

● = Field Screening Location



Map Created Date:
7-9-2023

Well Name:
STROH D07-31

Map Created By:
Jeff White

Well API:
05-123-26950

