

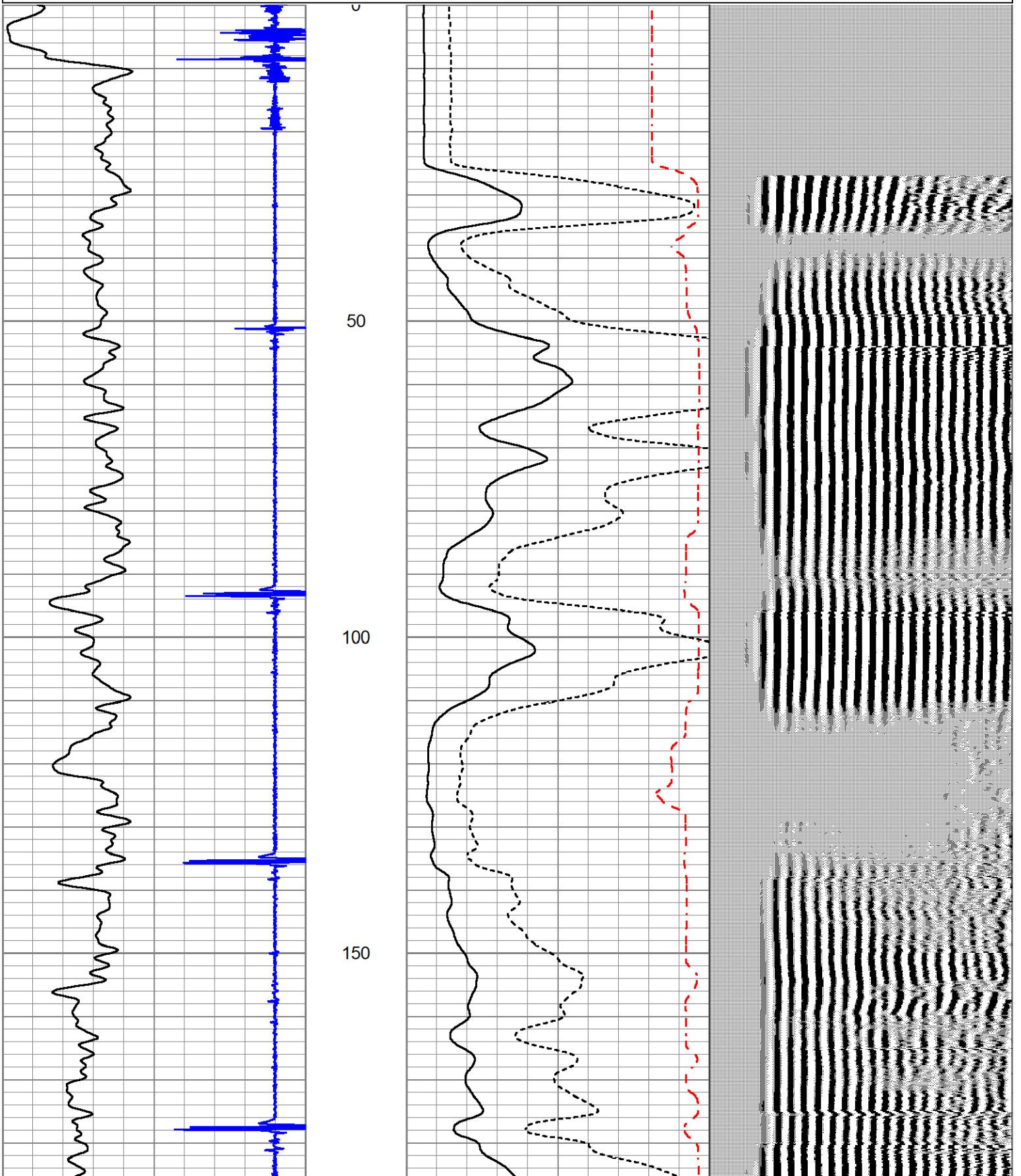


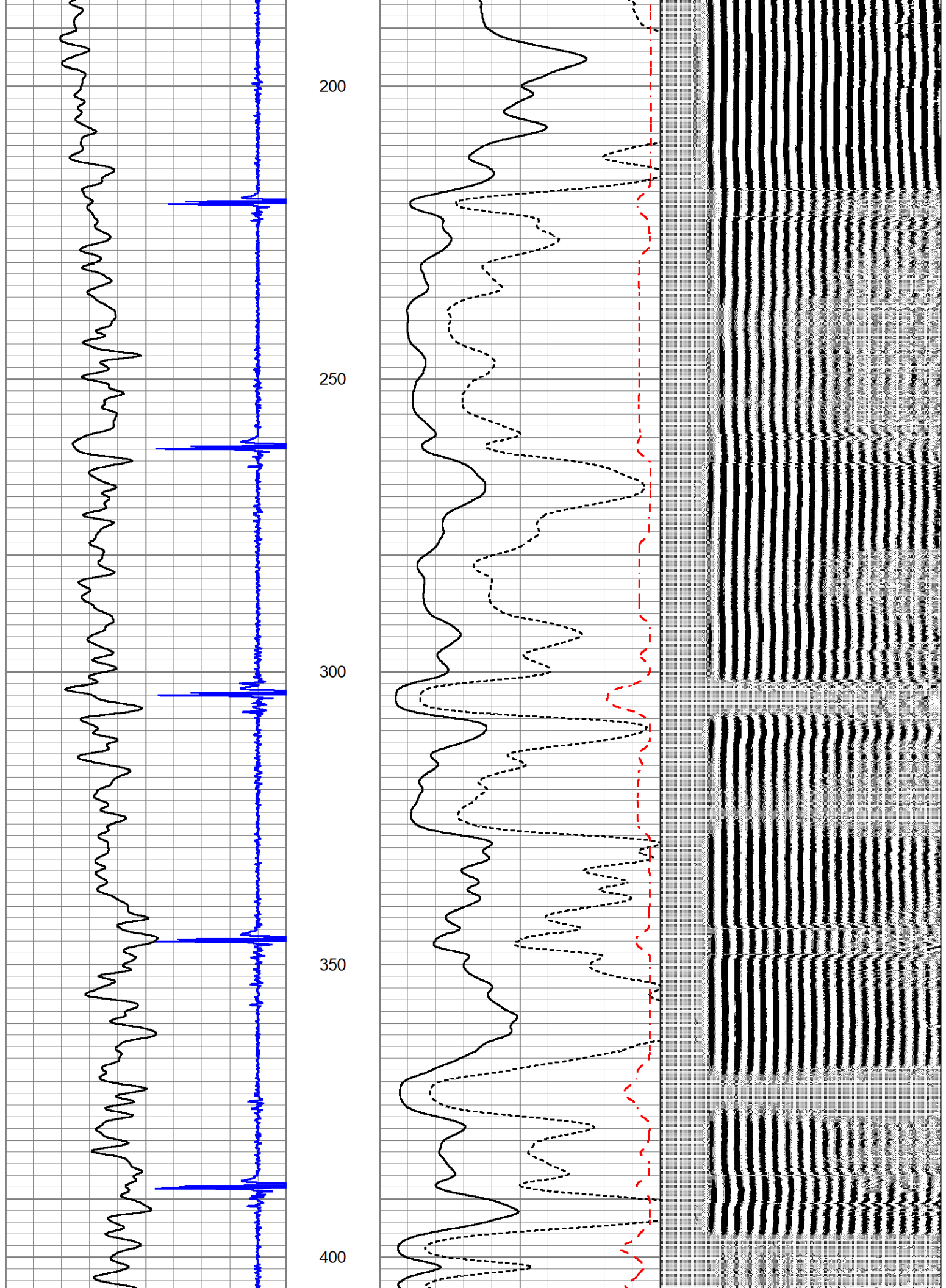
Database File 5-3-23 chevron pluss r7 cbl.db  
 Dataset Pathname PLUS\_G25-7/run1/pass3  
 Presentation Format cbl\_dr  
 Dataset Creation Wed May 03 11:47:22 2023  
 Charted by Depth in Feet scaled 1:240

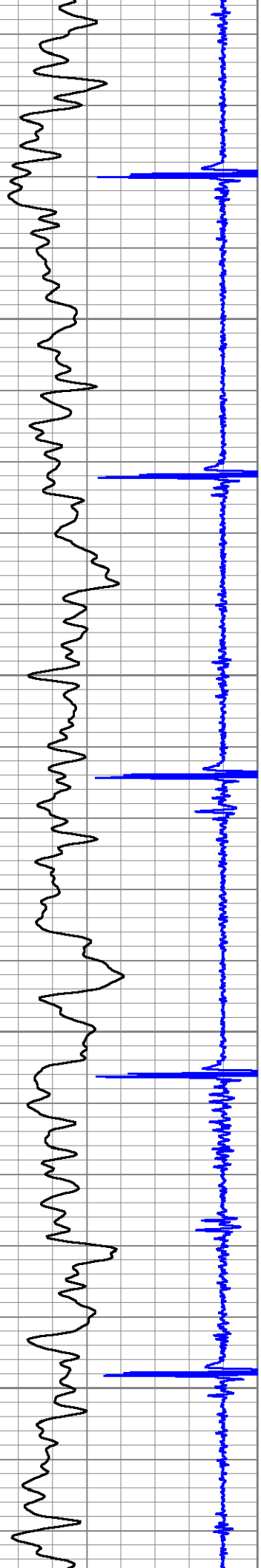
|   |                  |     |
|---|------------------|-----|
| 9 | Collar Locator   | -1  |
| 0 | Gamma Ray (GAPI) | 250 |

|      |                          |     |
|------|--------------------------|-----|
| 0    | Amplified Amplitude (mV) | 40  |
| 0    | Amplitude (mV)           | 100 |
| 1200 | TT3FT (usec)             | 200 |

200 VDL (usec) 1200





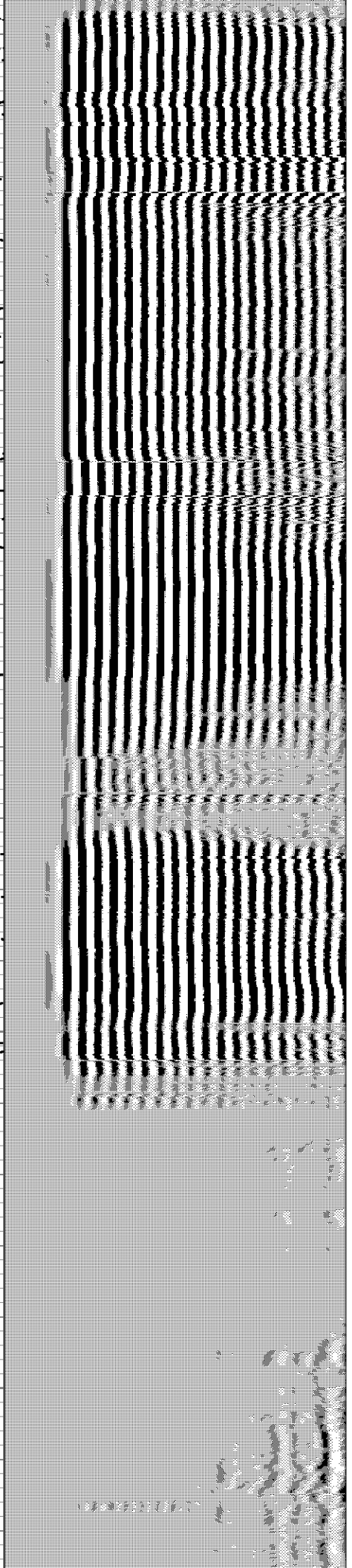
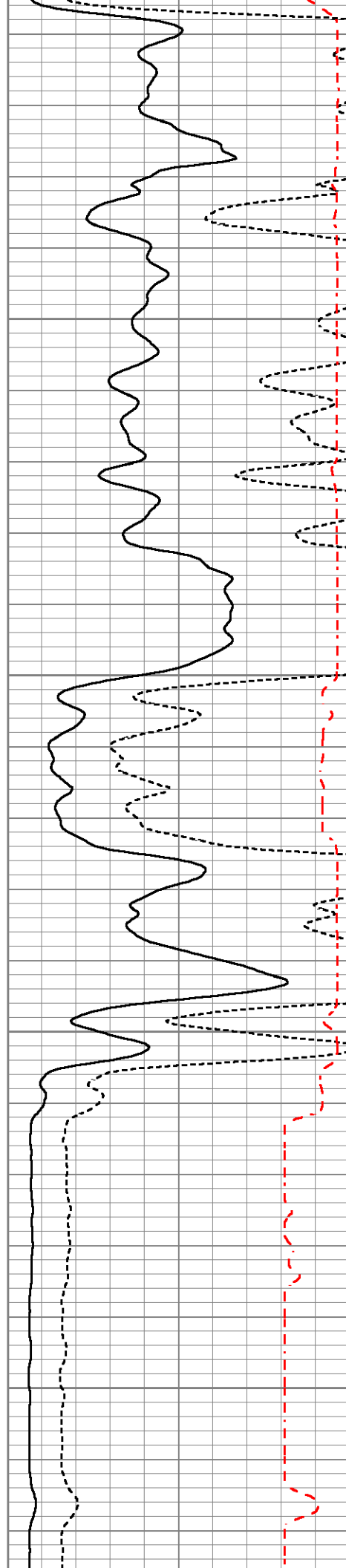


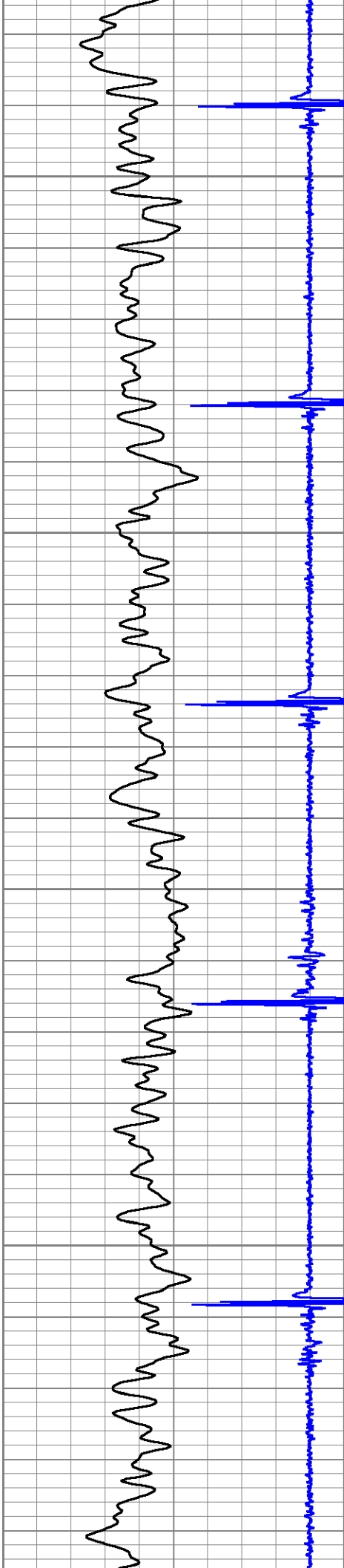
450

500

550

600



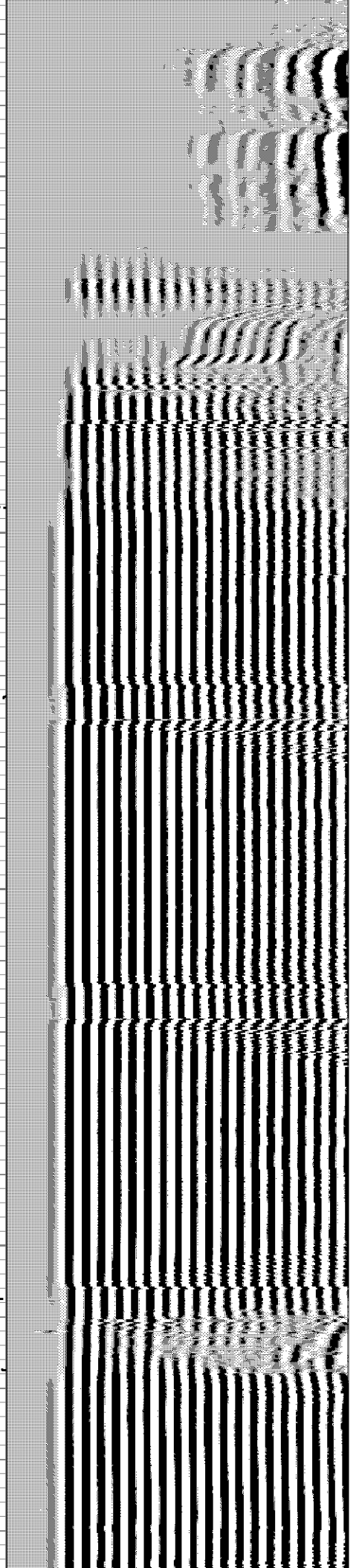
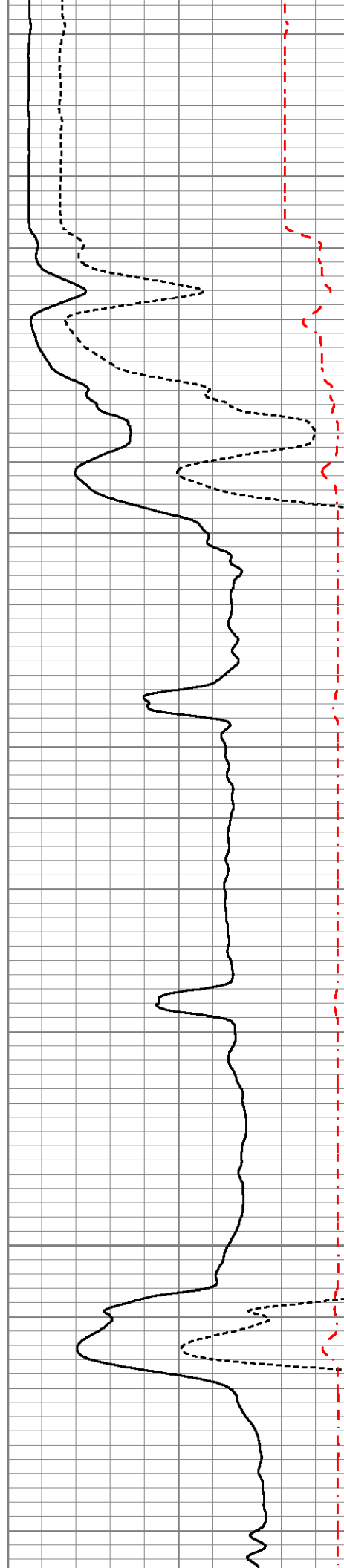


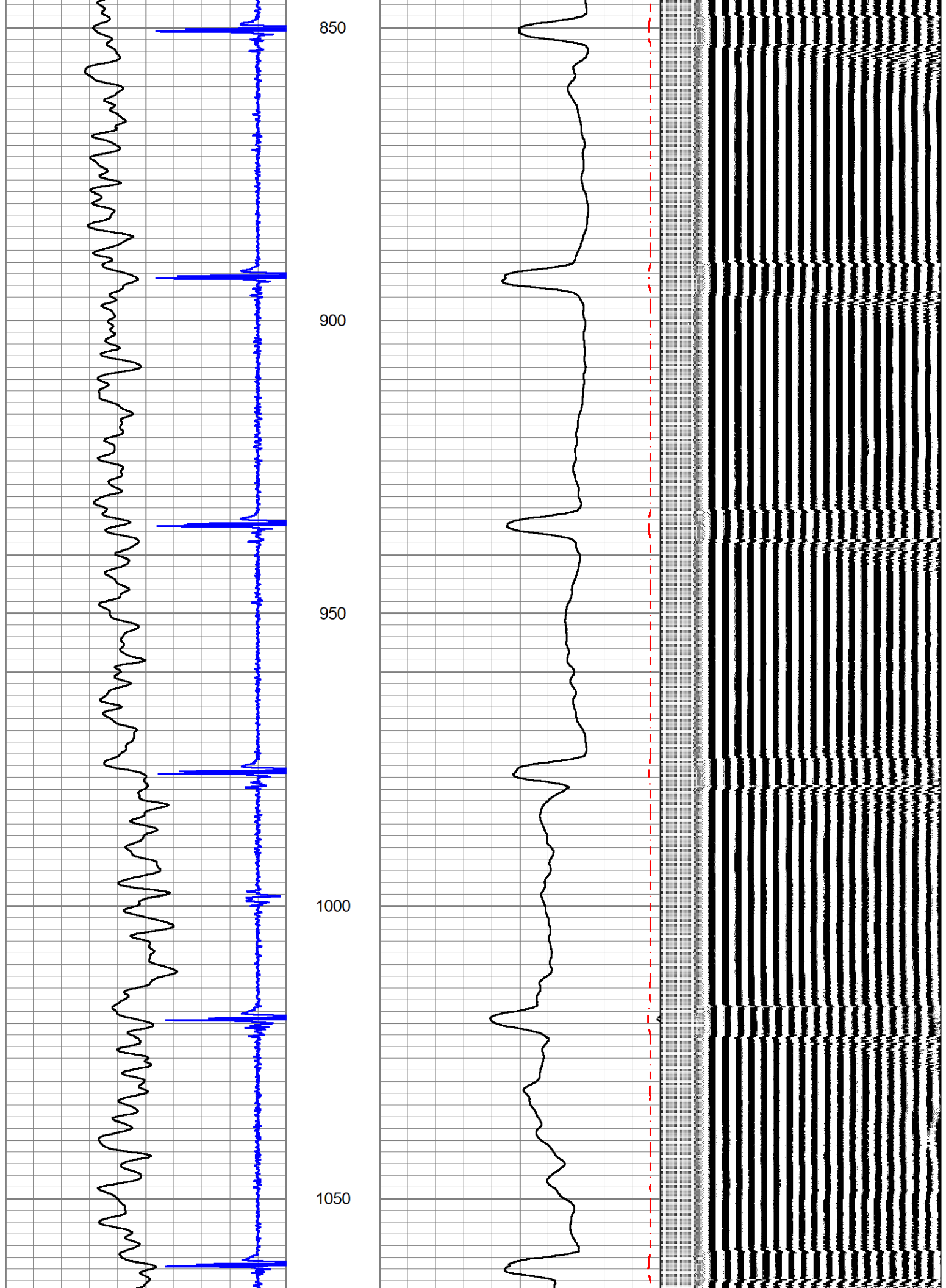
650

700

750

800





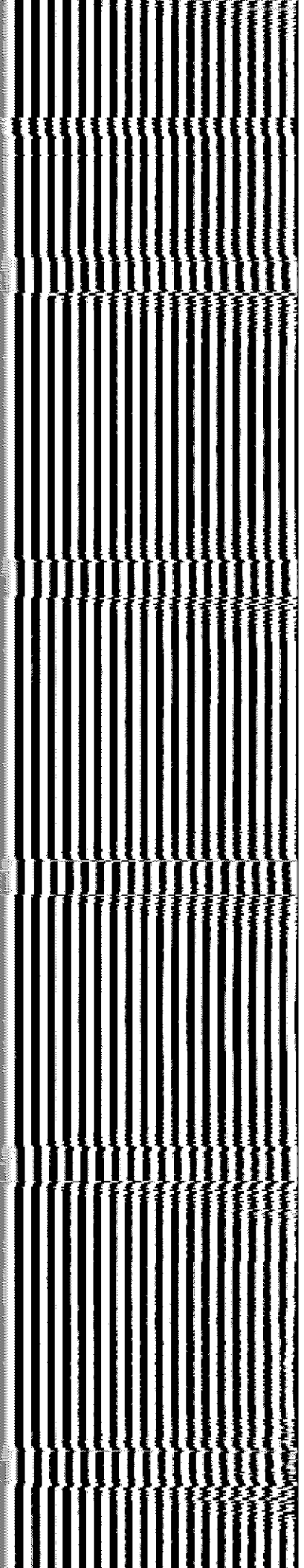


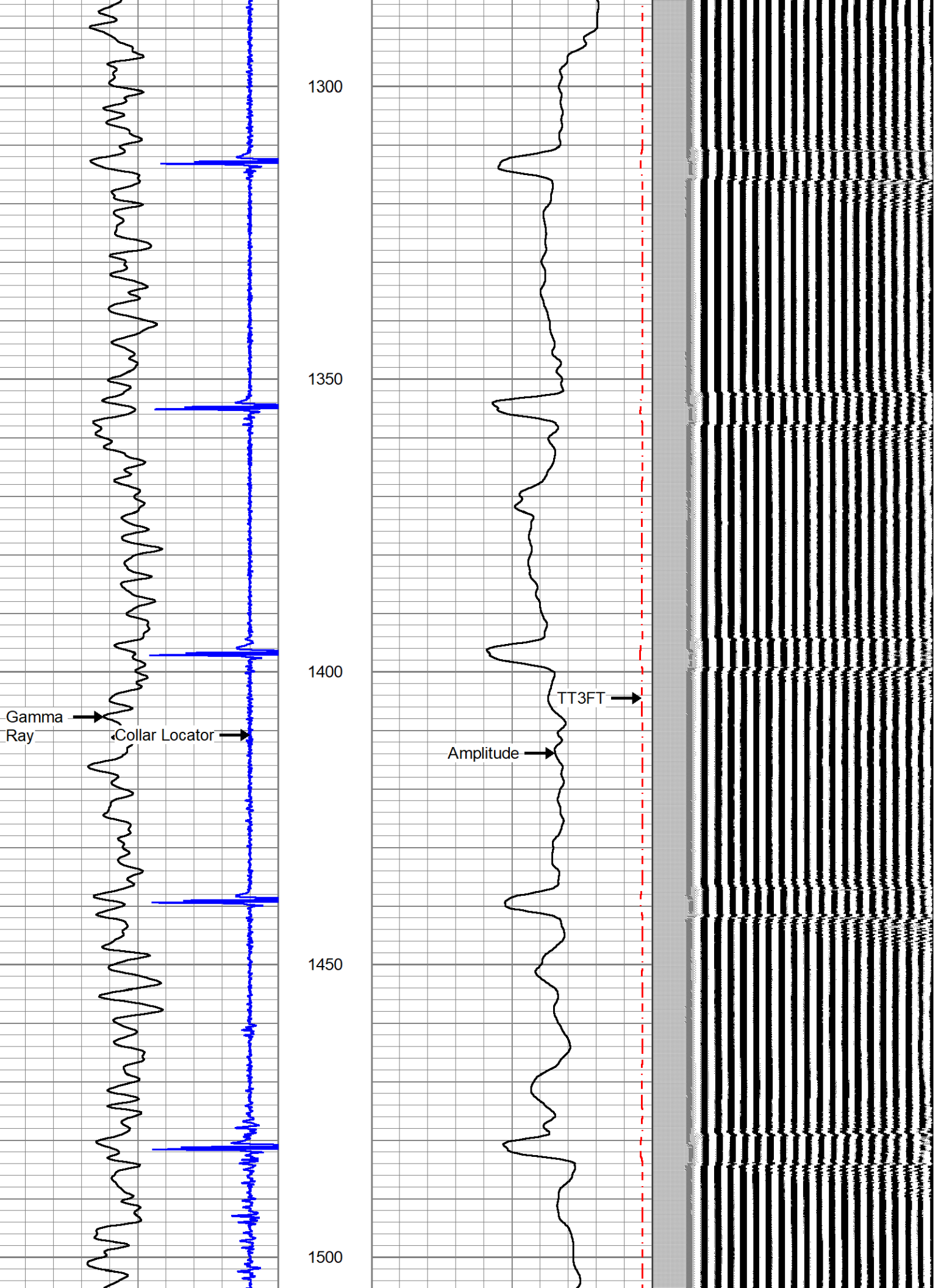
1100

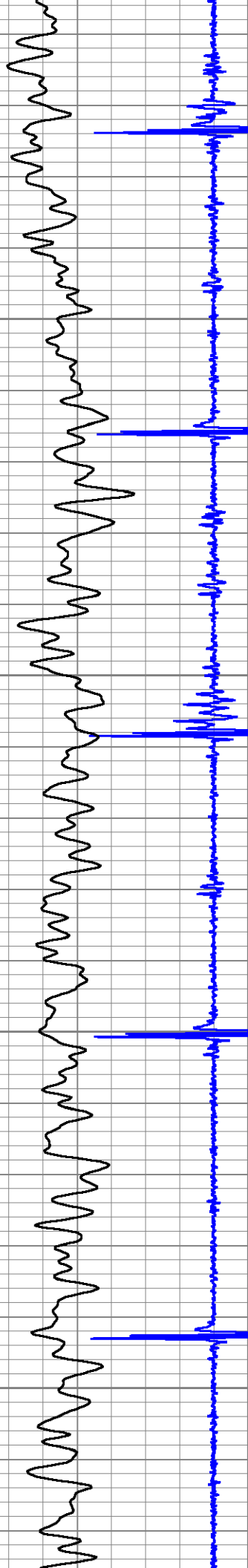
1150

1200

1250





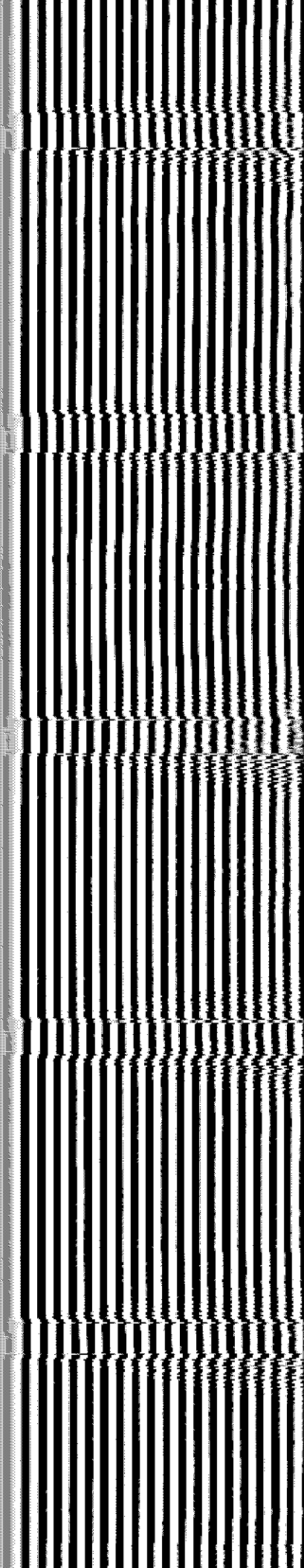
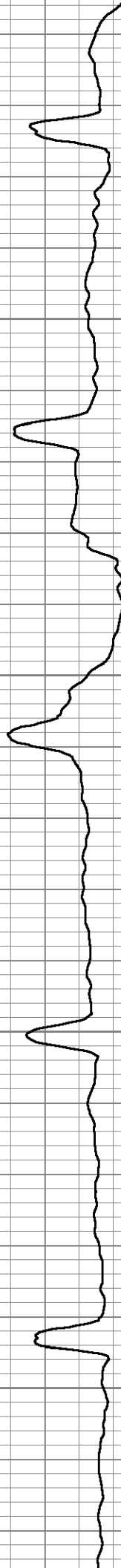


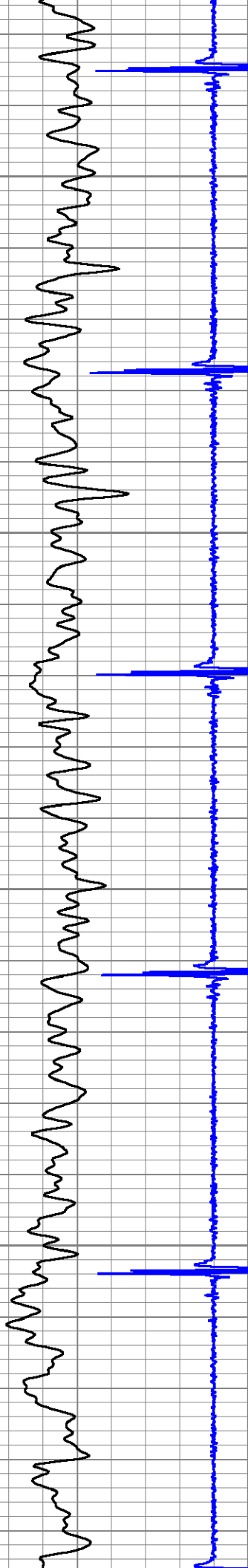
1550

1600

1650

1700



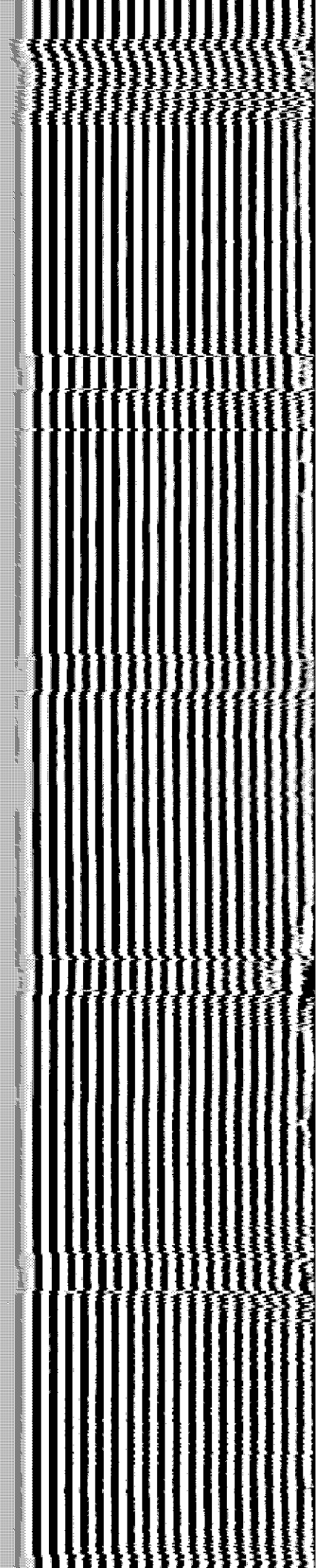
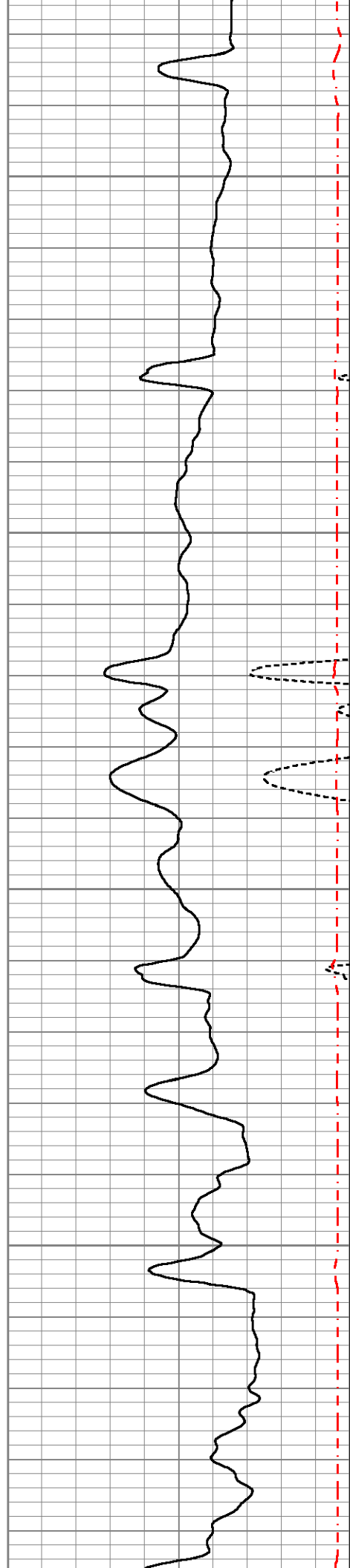


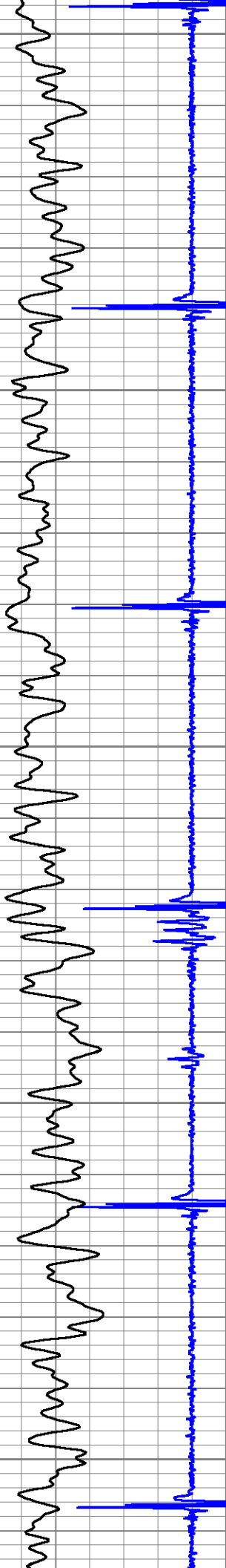
1750

1800

1850

1900





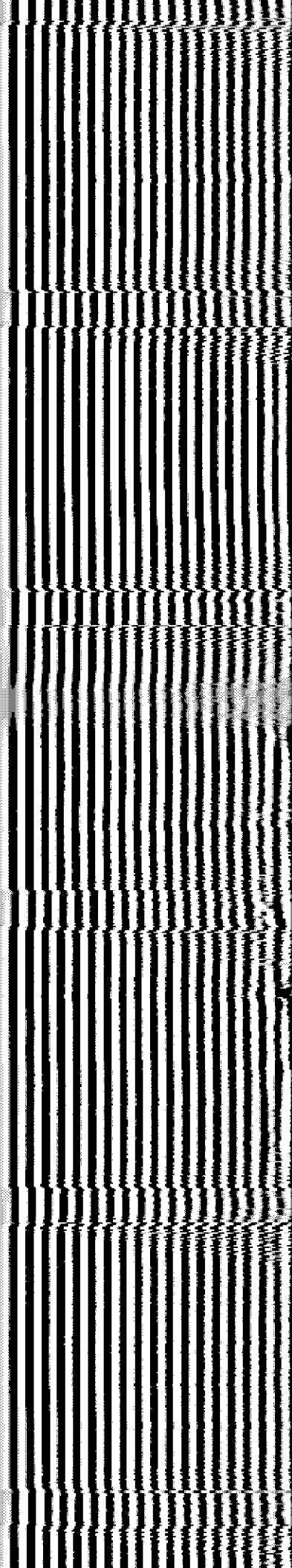
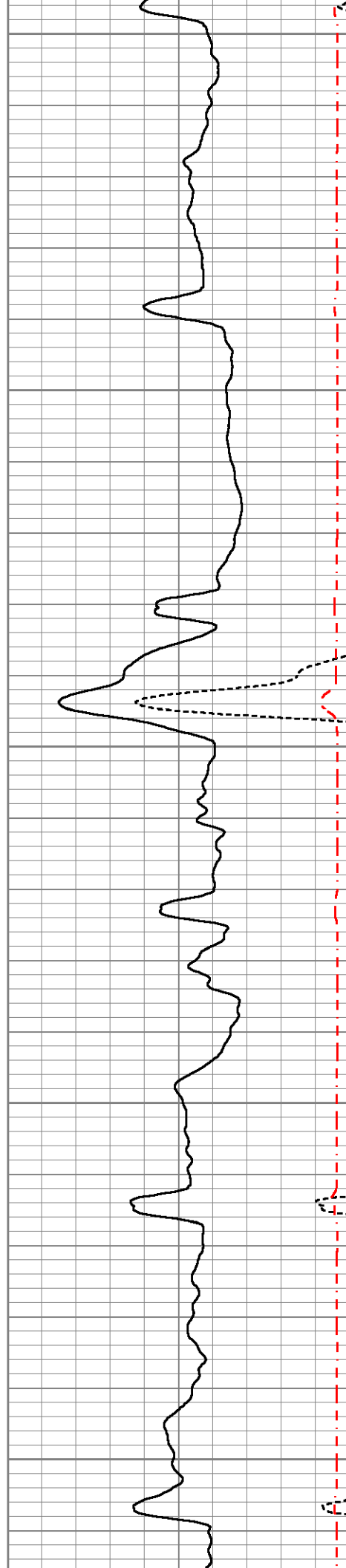
1950

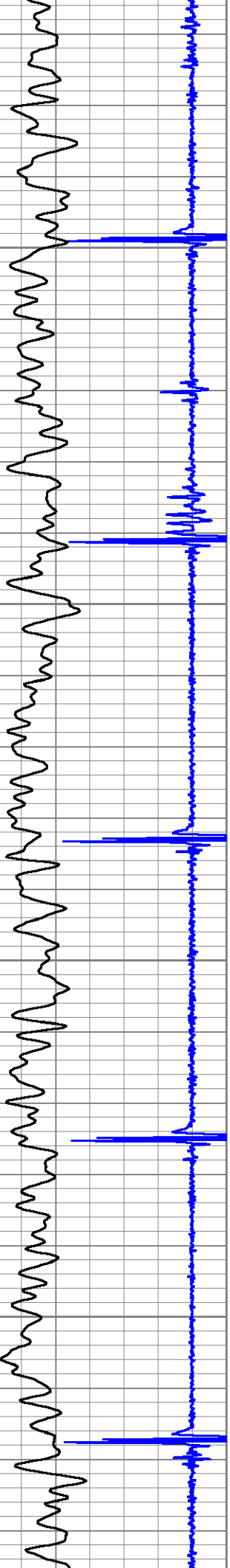
2000

2050

2100

2150



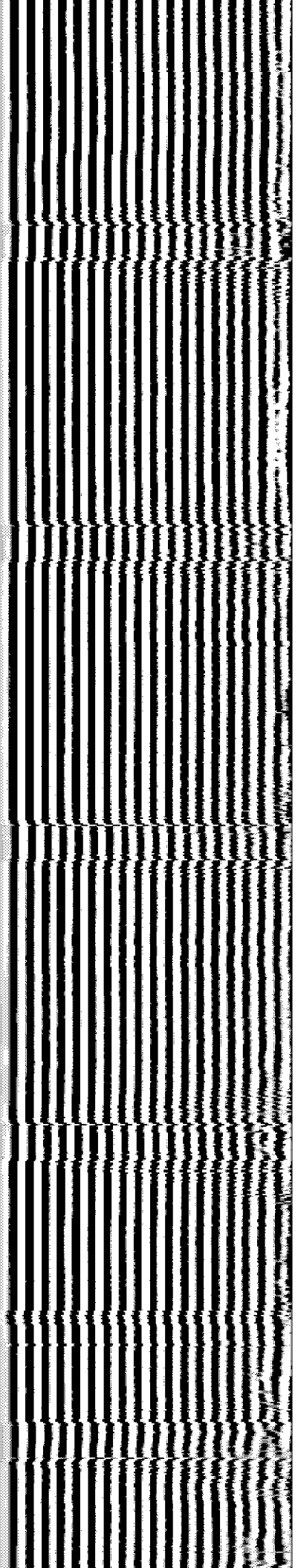
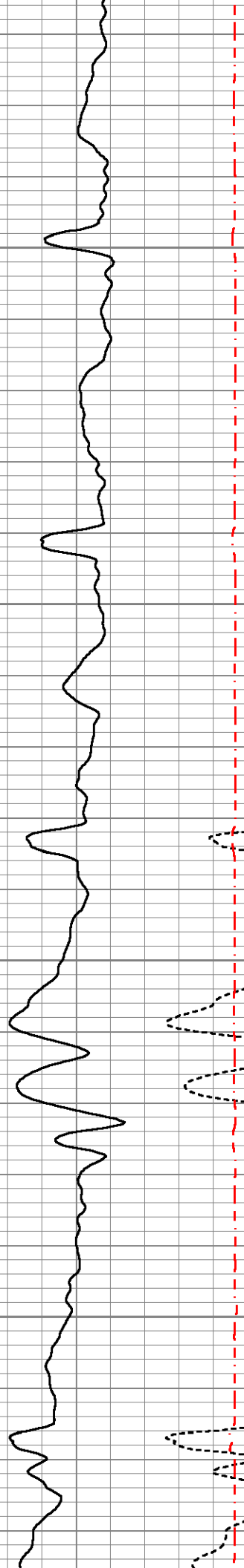


2200

2250

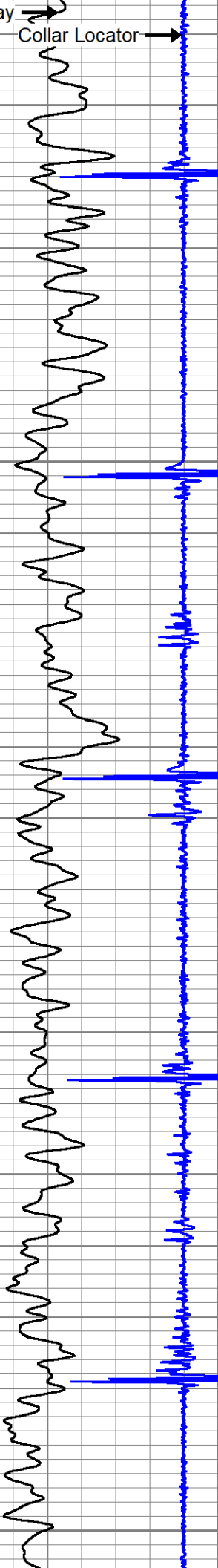
2300

2350



Gamma Ray

Collar Locator



Amplitude

Amplified Amplitude

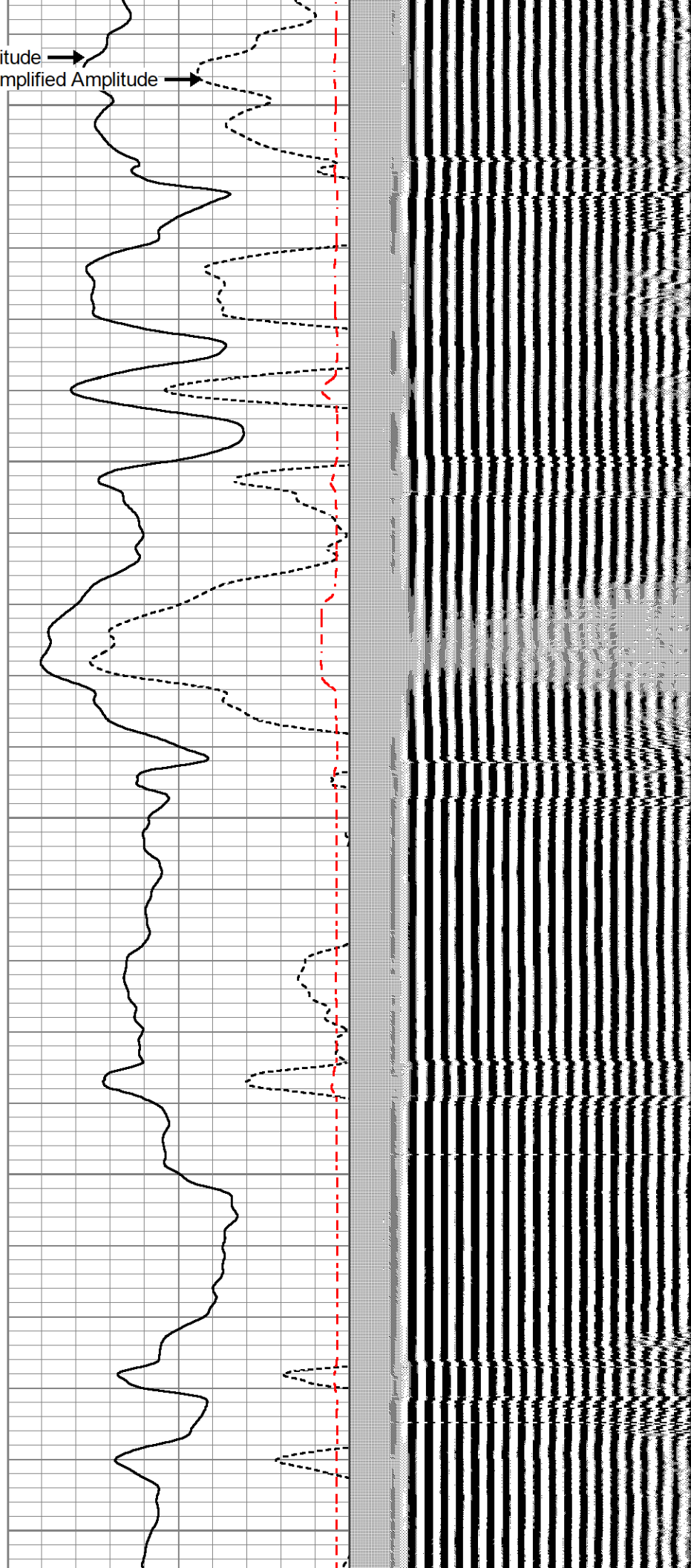
2400

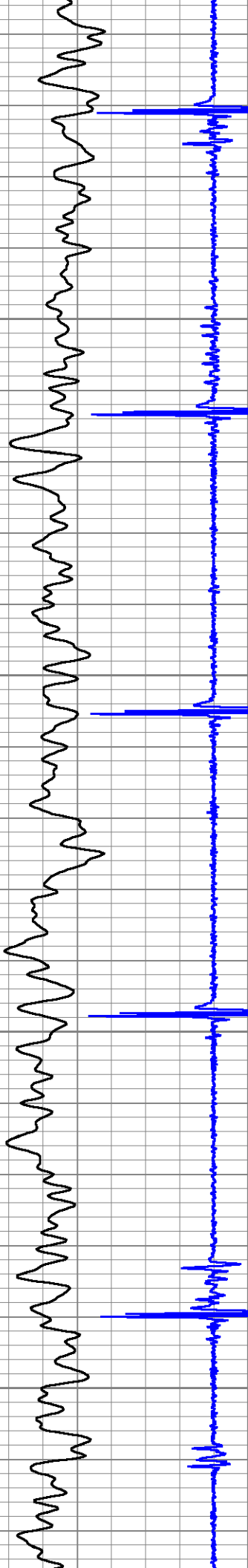
2450

2500

2550

2600



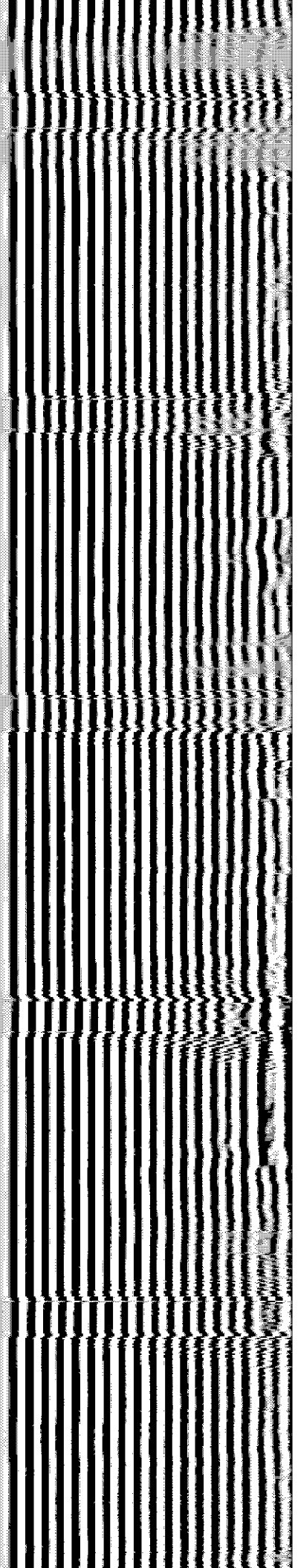
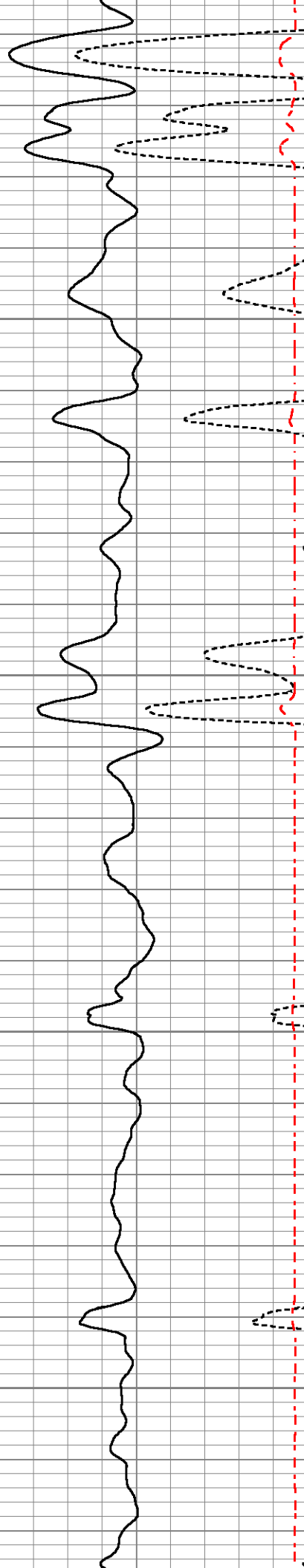


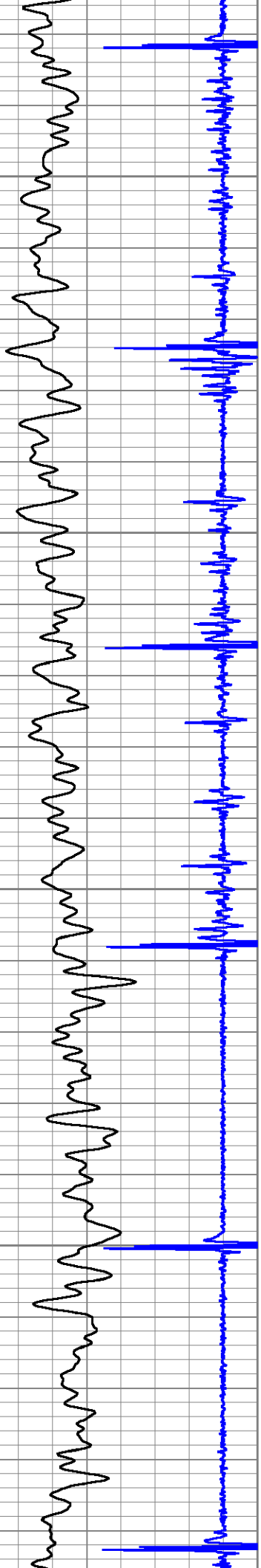
2650

2700

2750

2800



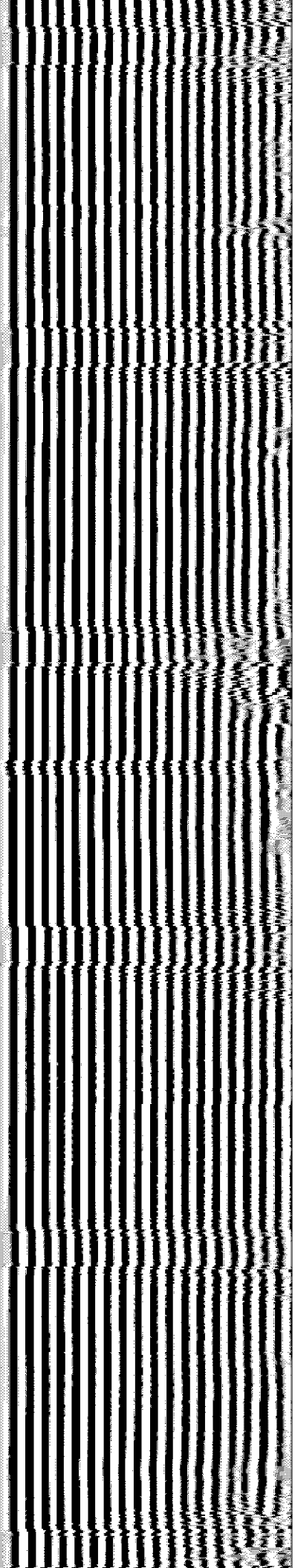
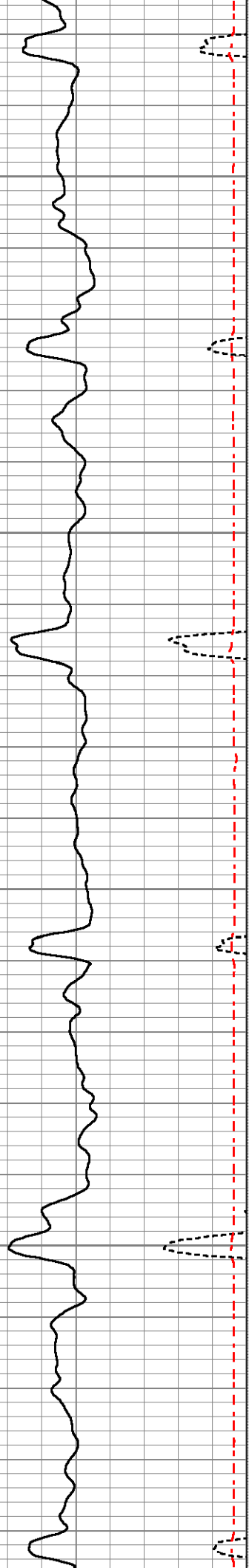


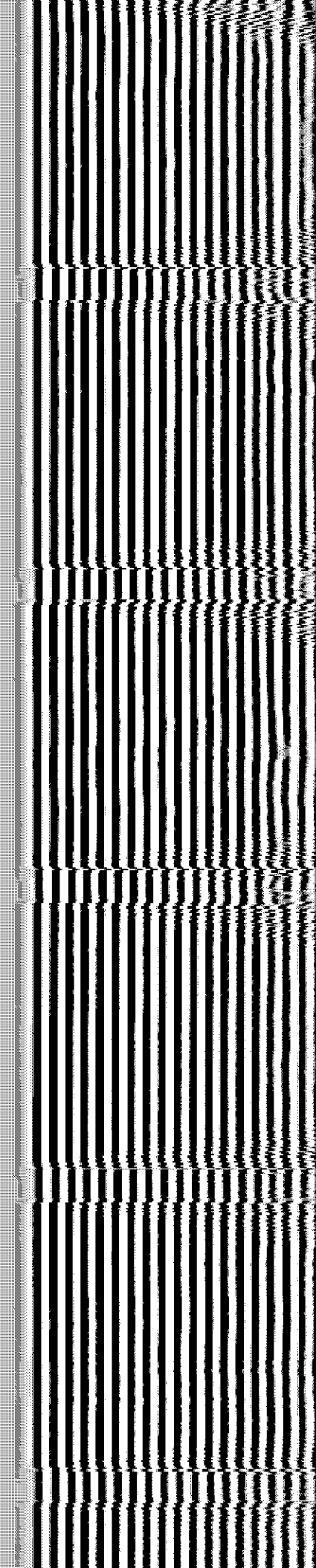
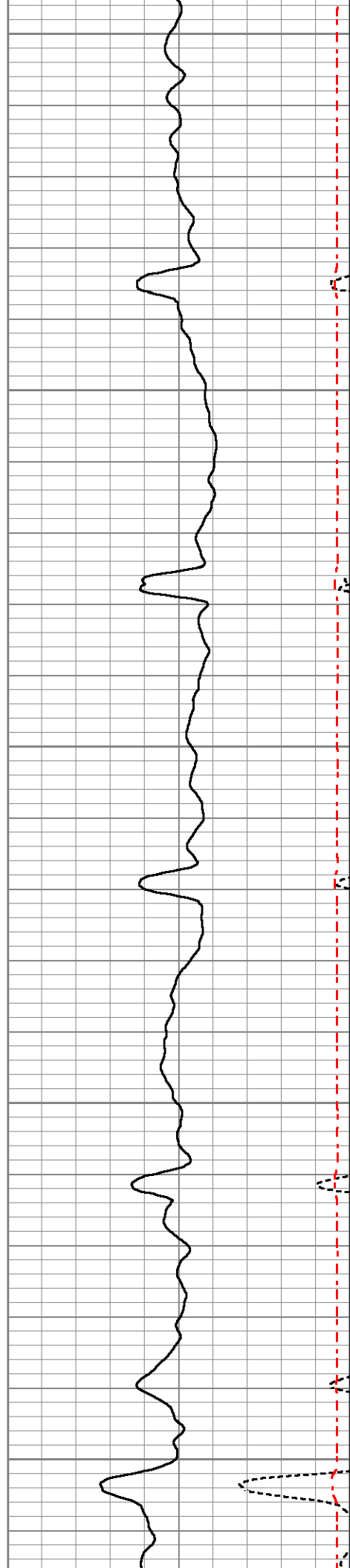
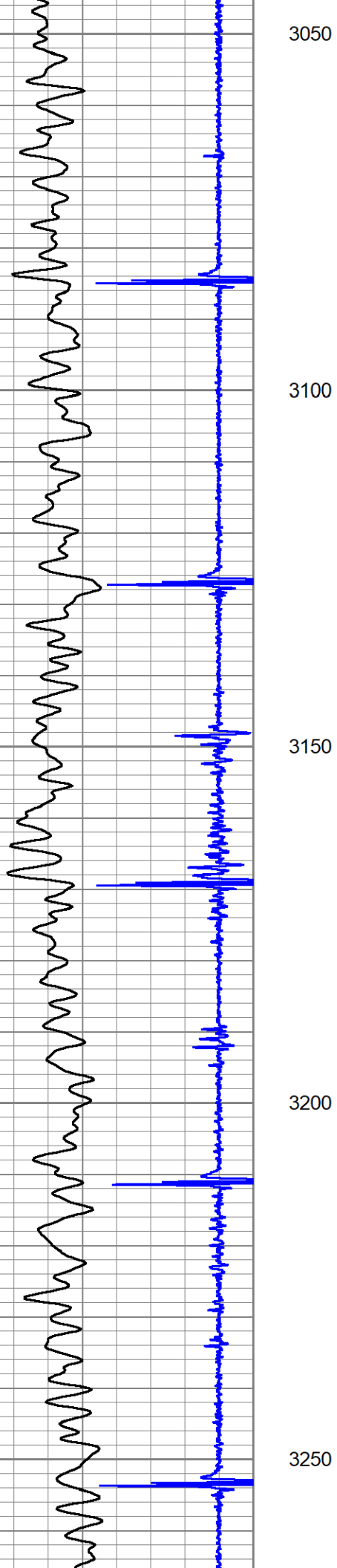
2850

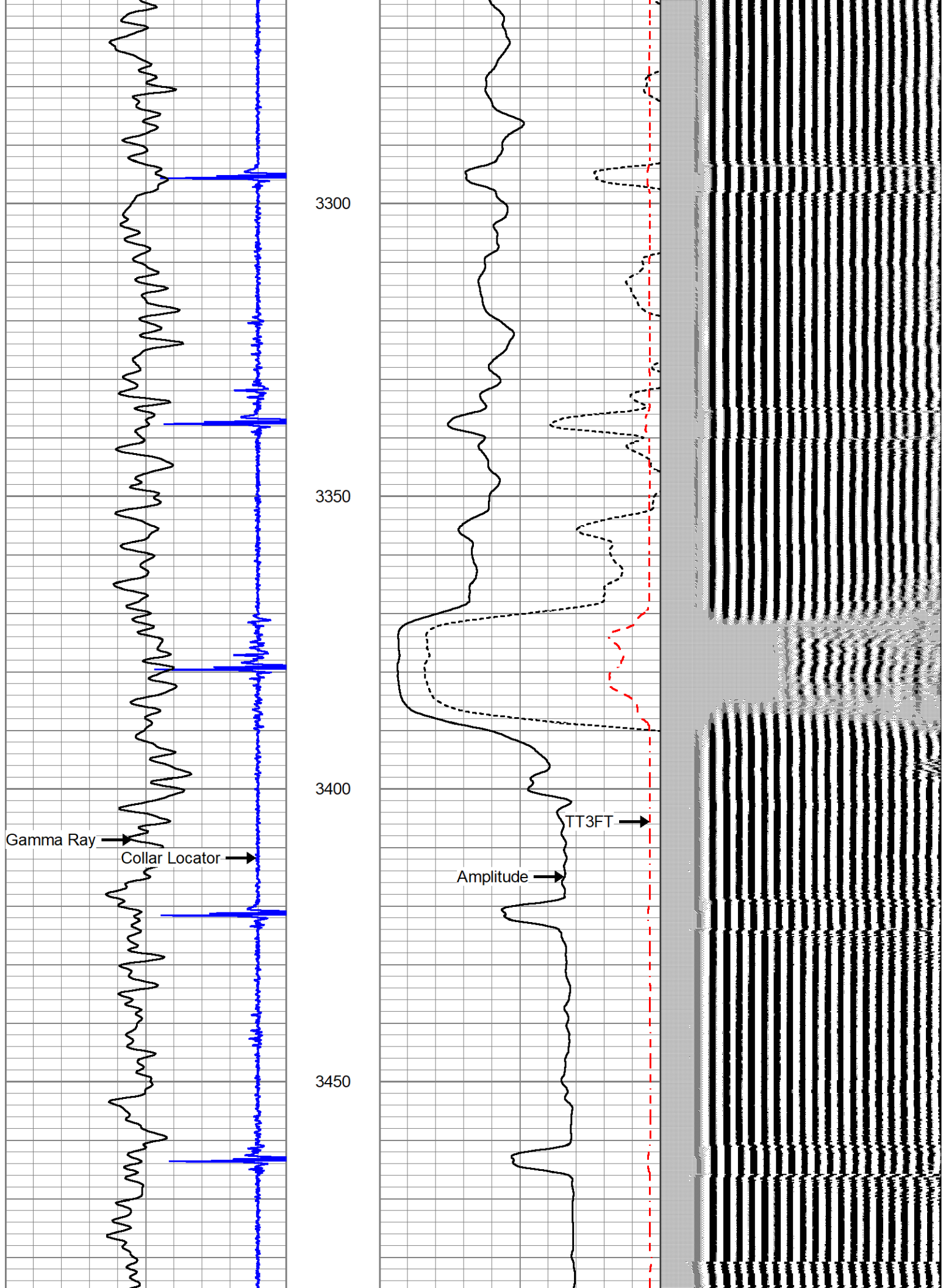
2900

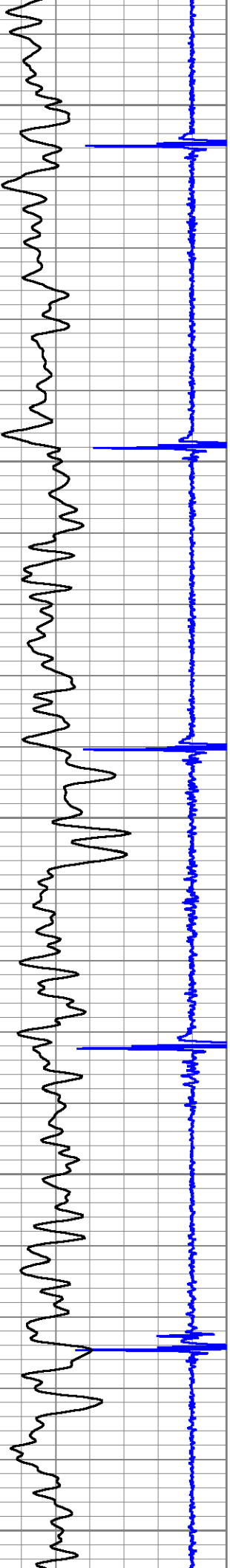
2950

3000









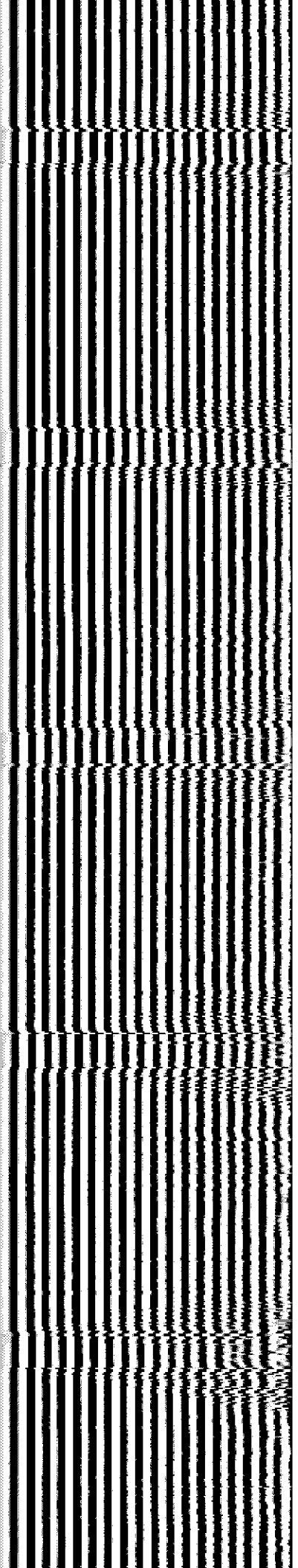
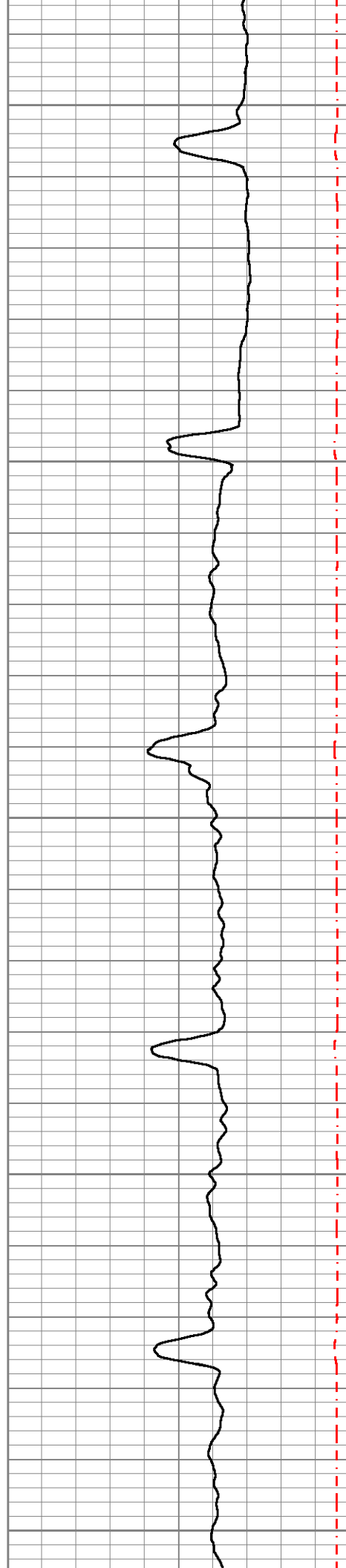
3500

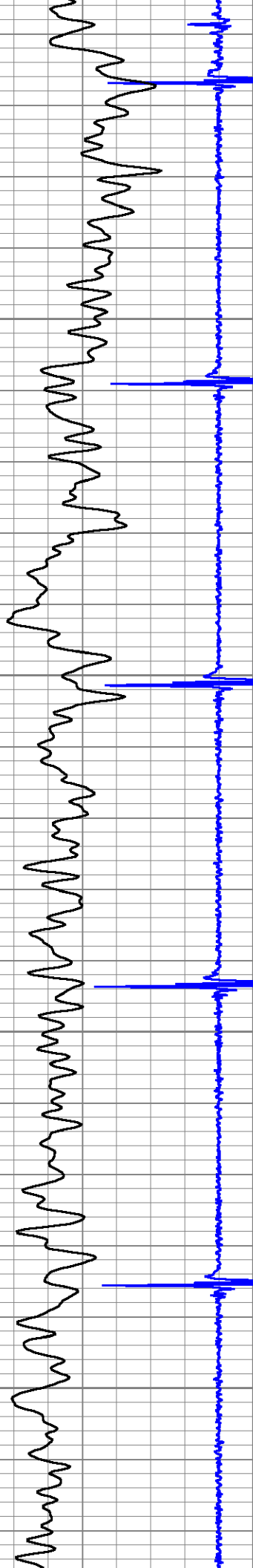
3550

3600

3650

3700



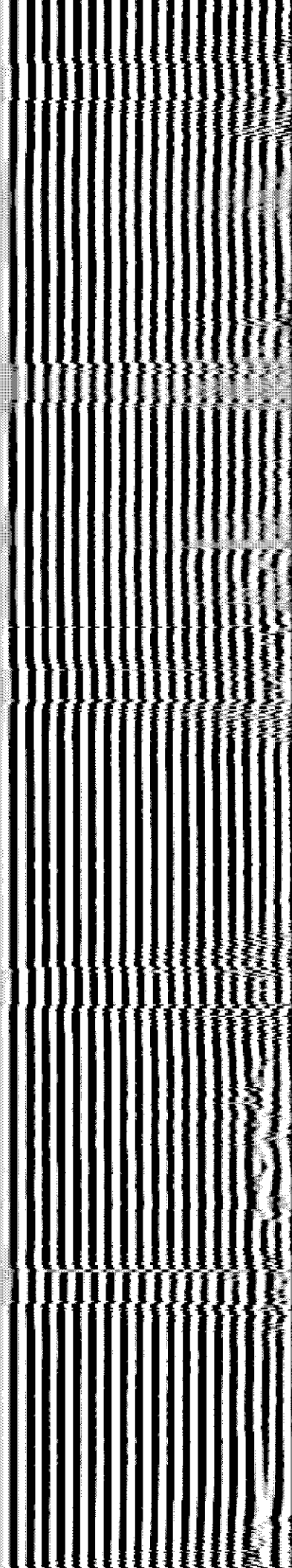
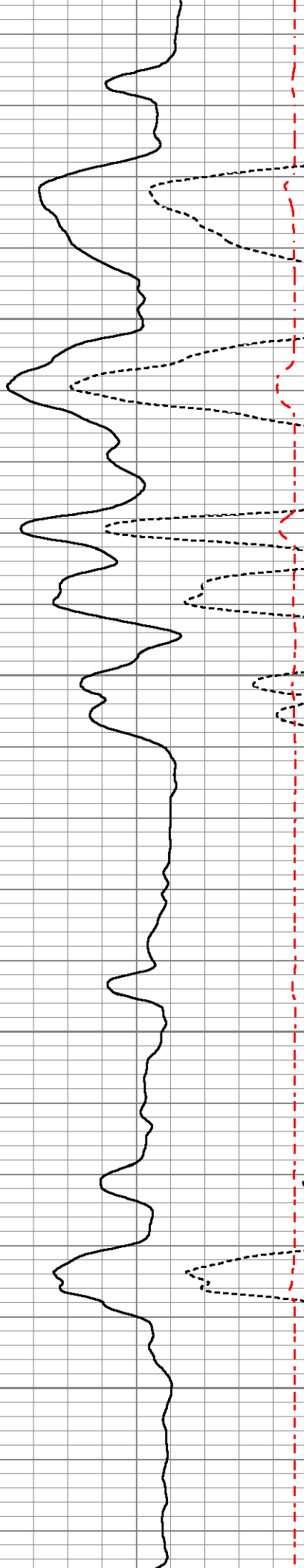


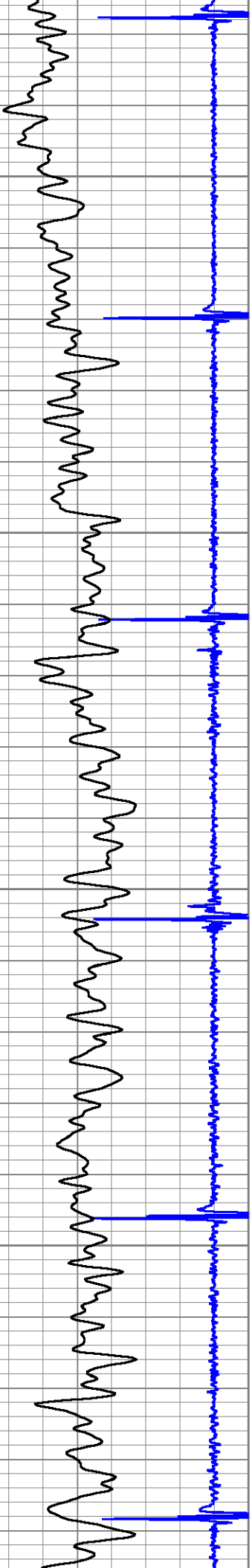
3750

3800

3850

3900



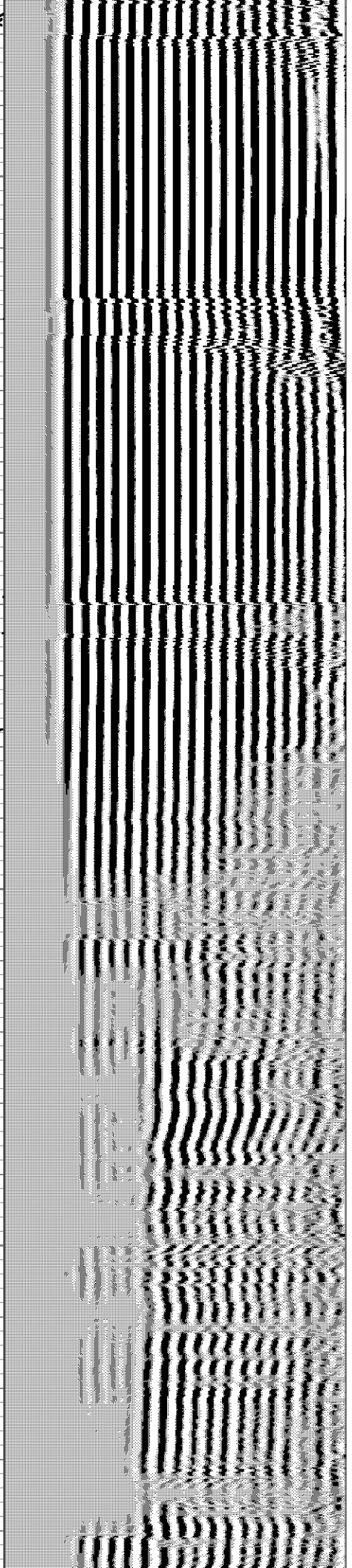
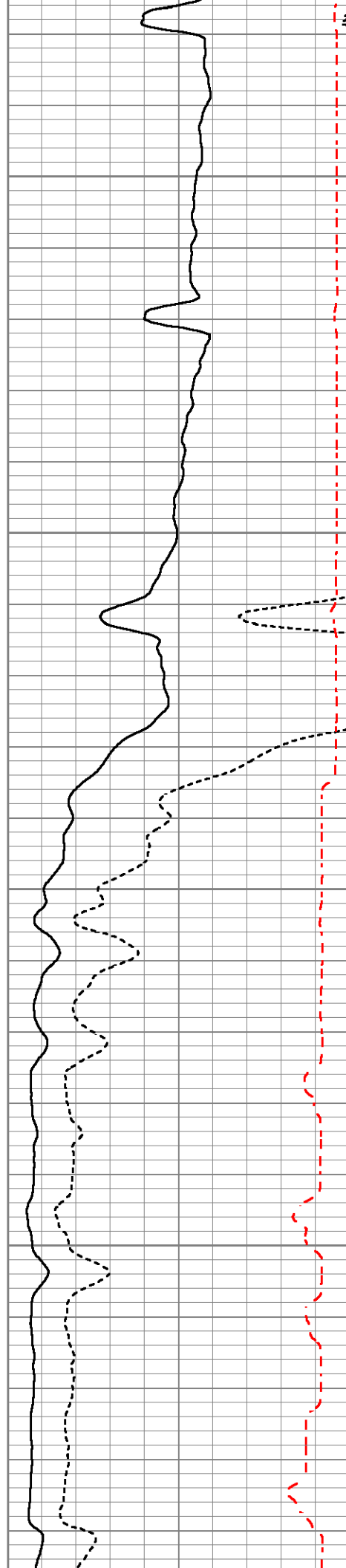


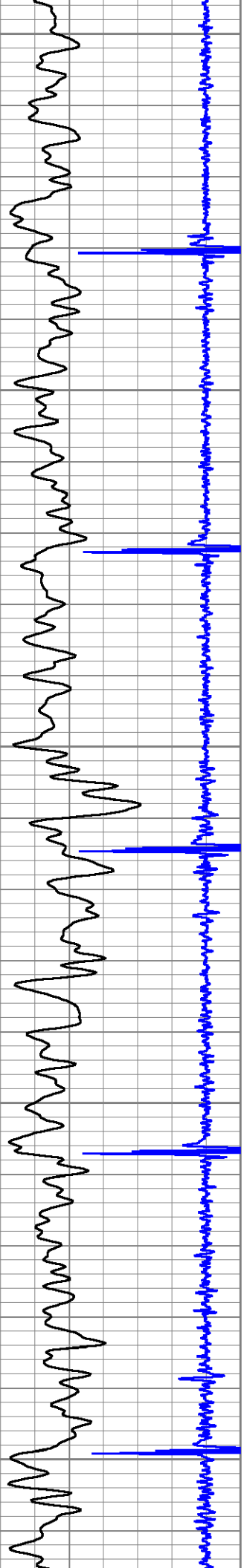
3950

4000

4050

4100





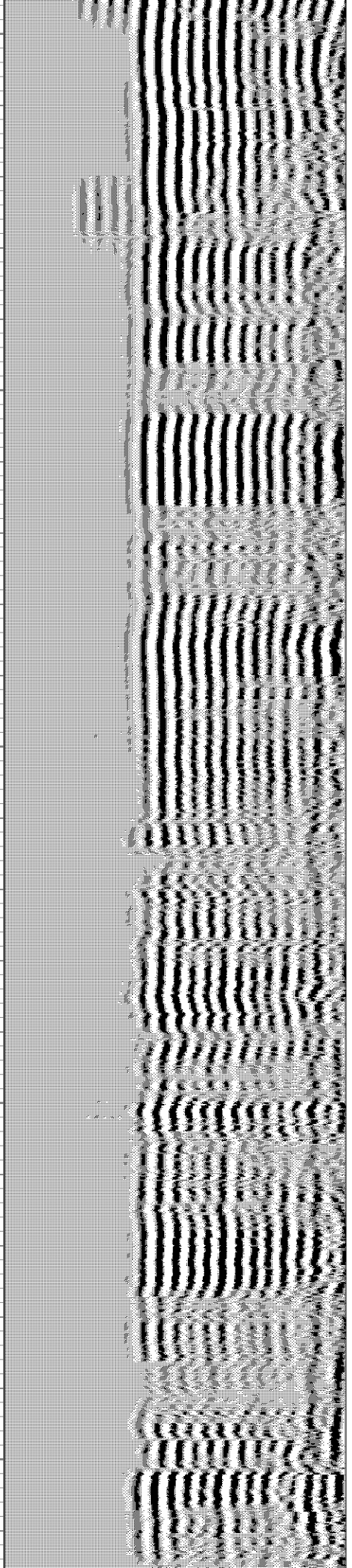
4150

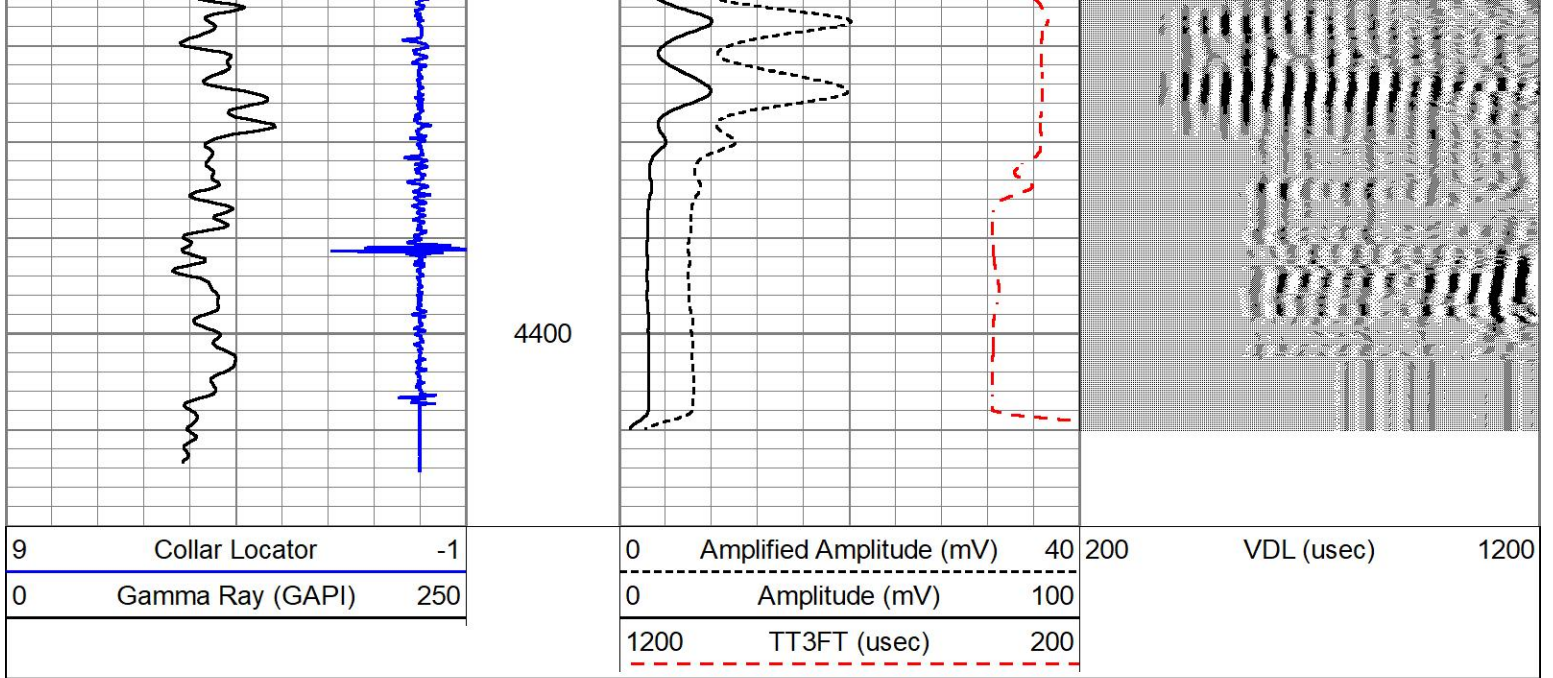
4200

4250

4300

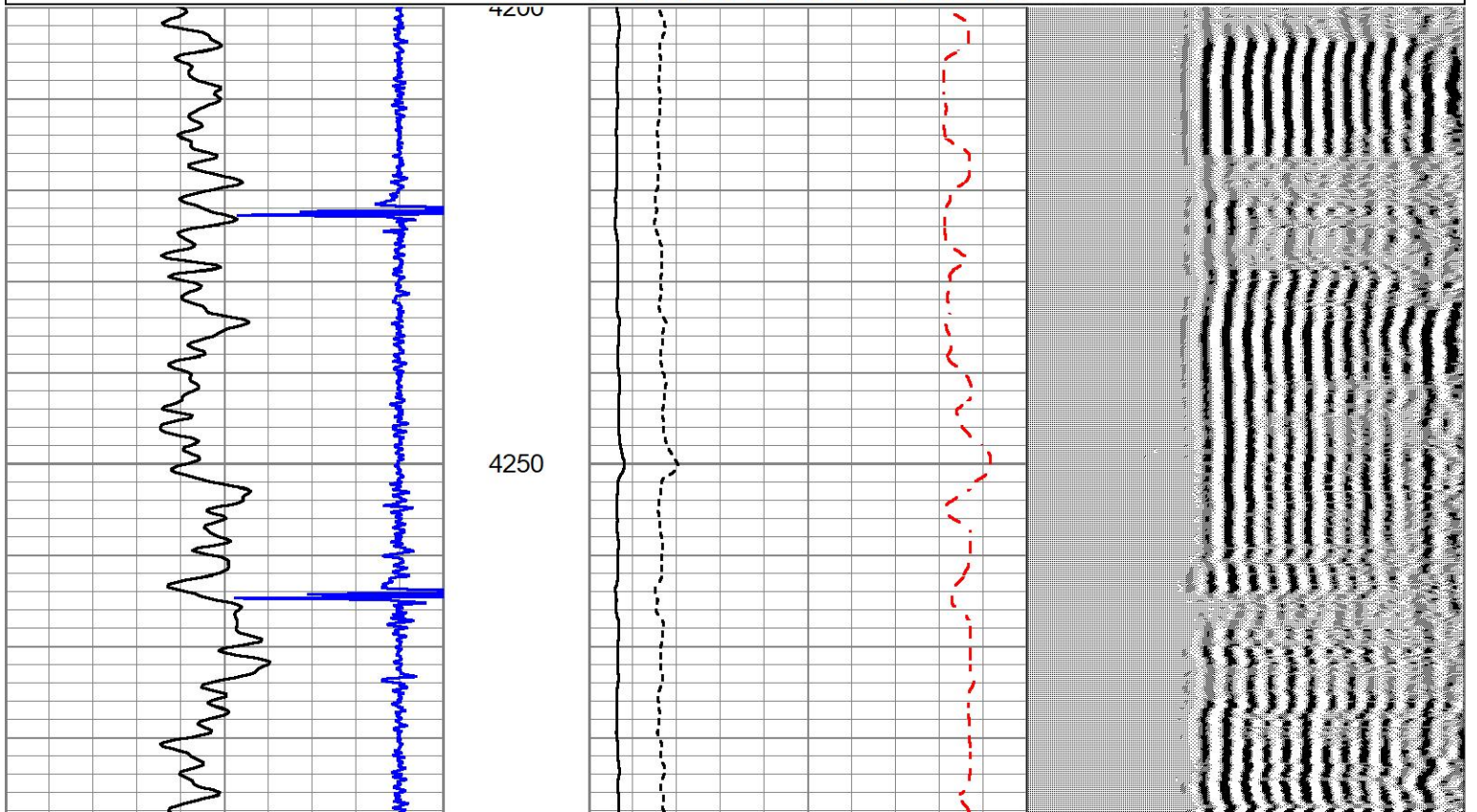
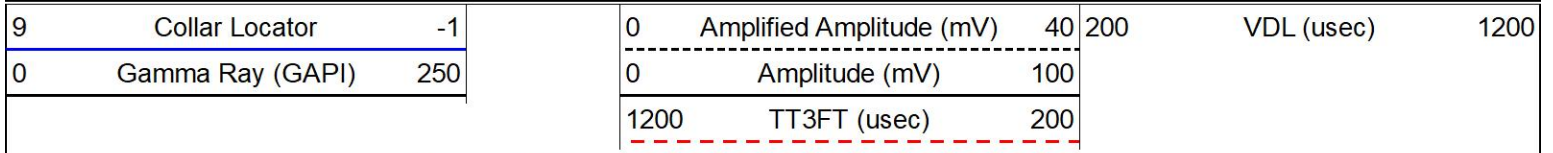
4350

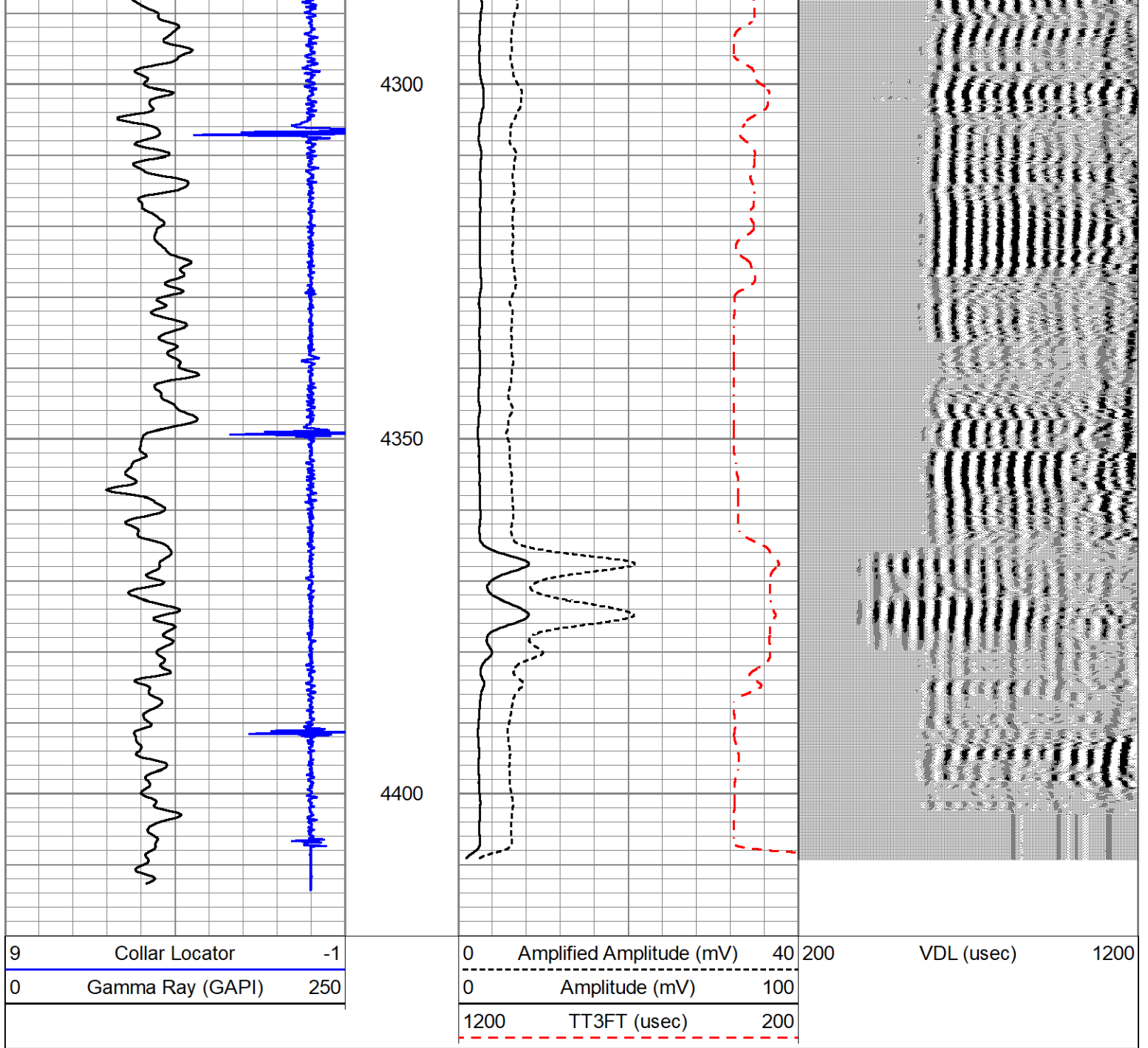




# REPEAT PASS

Database File 5-3-23 chevron pluss r7 cbl.db  
 Dataset Pathname PLUSS\_G25-7/run1/pass2  
 Presentation Format cbl\_dr  
 Dataset Creation Wed May 03 11:41:19 2023  
 Charted by Depth in Feet scaled 1:240





## Log Variables

Database: C:\ProgramData\Warrior\Data\5-3-23 chevron pluss r7 cbl.db  
 Dataset: field/PLUSS\_G25-7/run1/pass3/\_vars\_

### Top - Bottom

|                       |                        |                      |                     |                           |                    |                    |                         |
|-----------------------|------------------------|----------------------|---------------------|---------------------------|--------------------|--------------------|-------------------------|
| BOREID<br>in<br>7.875 | BOTTEMP<br>degF<br>100 | CASEOD<br>in<br>4.5  | CASETHCK<br>in<br>0 | CASEWGHT<br>lb/ft<br>11.6 | MAXAMPL<br>mV<br>0 | MINAMPL<br>mV<br>1 | MINATTN<br>db/ft<br>0.8 |
| PERFS<br>No           | PPT<br>uSec<br>0       | SRFTEMP<br>degF<br>0 | TDEPTH<br>ft<br>0   |                           |                    |                    |                         |

### Calibration Report

Database File: 5-3-23 chevron pluss r7 cbl.db  
 Dataset Pathname: PLUSS\_G25-7/run1/pass3  
 Dataset Creation: Wed May 03 11:47:22 2023

Gamma Ray Calibration Report

Type / Serial: Probe275dig / pr051113

SHOP CALIBRATION

Mon Oct 22 13:45:45 2018

|            |             |        |        |     |                 |
|------------|-------------|--------|--------|-----|-----------------|
|            | Counts/Sec. | Gain   | Offset | Jig | Units           |
| Background | 0.0         |        |        |     | cps             |
| Calibrator | 1.0         | 1.0000 |        |     | cps<br>GAPI/cps |

PRIMARY VERIFICATION

|            |     |  |  |     |      |
|------------|-----|--|--|-----|------|
| Background | 0.0 |  |  |     | cps  |
| Calibrator | 0.0 |  |  |     | cps  |
| Difference |     |  |  | 0.0 | GAPI |

BEFORE SURVEY VERIFICATION

|            |     |  |  |     |      |
|------------|-----|--|--|-----|------|
| Background | 0.0 |  |  |     | cps  |
| Calibrator | 0.0 |  |  |     | cps  |
| Difference |     |  |  | 0.0 | GAPI |

AFTER SURVEY VERIFICATION

|            |     |  |  |     |      |
|------------|-----|--|--|-----|------|
| Background | 0.0 |  |  |     | cps  |
| Calibrator | 0.0 |  |  |     | cps  |
| Difference |     |  |  | 0.0 | GAPI |

Segmented Cement Bond Log Calibration Report

Serial Number: 275  
 Tool Model: Probe  
 Calibration Casing Diameter: 4.500 in  
 Calibration Depth: 27.000 ft

Master Calibration, performed Wed May 03 10:57:04 2023:

|     | Raw (v) |       | Calibrated (mv) |        | Results |        |
|-----|---------|-------|-----------------|--------|---------|--------|
|     | Zero    | Cal   | Zero            | Cal    | Gain    | Offset |
| 3'  | -0.001  | 1.249 | 2.000           | 81.196 | 63.366  | 2.077  |
| CAL |         |       |                 |        |         |        |
| 5'  | -0.001  | 1.314 | 2.000           | 81.196 | 60.219  | 2.078  |
| SUM |         |       |                 |        |         |        |
| S1  |         |       |                 |        |         |        |
| S2  |         |       |                 |        |         |        |
| S3  |         |       |                 |        |         |        |
| S4  |         |       |                 |        |         |        |
| S5  |         |       |                 |        |         |        |
| S6  |         |       |                 |        |         |        |
| S7  |         |       |                 |        |         |        |
| S8  |         |       |                 |        |         |        |

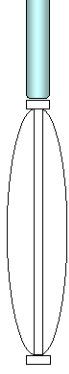
Internal Reference Calibration, performed (Not Performed):

|     | Raw (v) |     | Calibrated (v) |     | Results |        |
|-----|---------|-----|----------------|-----|---------|--------|
|     | Zero    | Cal | Zero           | Cal | Gain    | Offset |
| CAL |         |     |                |     |         |        |

Air Zero Calibration, performed Wed May 16 07:39:51 2018:

|     | Raw (v) | Calibrated (v) | Results |
|-----|---------|----------------|---------|
|     | Zero    | Zero           | Offset  |
| 3'  | 0.000   | 0.000          | 0.000   |
| 5'  | 0.000   | 0.000          | 0.000   |
| SUM |         |                |         |
| S1  |         |                |         |
| S2  |         |                |         |
| S3  |         |                |         |
| S4  |         |                |         |
| S5  |         |                |         |
| S6  |         |                |         |
| S7  |         |                |         |
| S8  |         |                |         |

| Sensor              | Offset (ft)  | Schematic | Description  | Length (ft) | O.D. (in) | Weight (lb) |
|---------------------|--------------|-----------|--|-------------|-----------|-------------|
|                     |              |           | CENT-Probe<br>Probe 2 3/4 Centralizer                | 2.88        | 2.75      | 20.00       |
| WVF3FT              | 12.25        |           | CBL-Probe (275)<br>Probe 2.75" Dual Receiver Bond    | 9.63        | 2.75      | 60.00       |
| WVF5FT              | 11.25        |           |  |             |           |             |
| WVFSYNC<br>HEADVOLT | 8.06<br>8.06 |           |  |             |           |             |
| CCL                 | 6.79         |           |  |             |           |             |
| GR                  | 5.42         |           | GR-Probe275dig (pr051113)<br>Probe Digital Gamma CCL | 5.19        | 2.75      | 57.00       |



CENT-Probe  
Probe 2 3/4 Centralizer

2.88

2.75

20.00

Dataset: 5-3-23 chevron pluss r7 cbl.db: field/PLUSS\_G25-7/run1/pass3  
Total length: 20.56 ft  
Total weight: 157.00 lb  
O.D.: 2.75 in