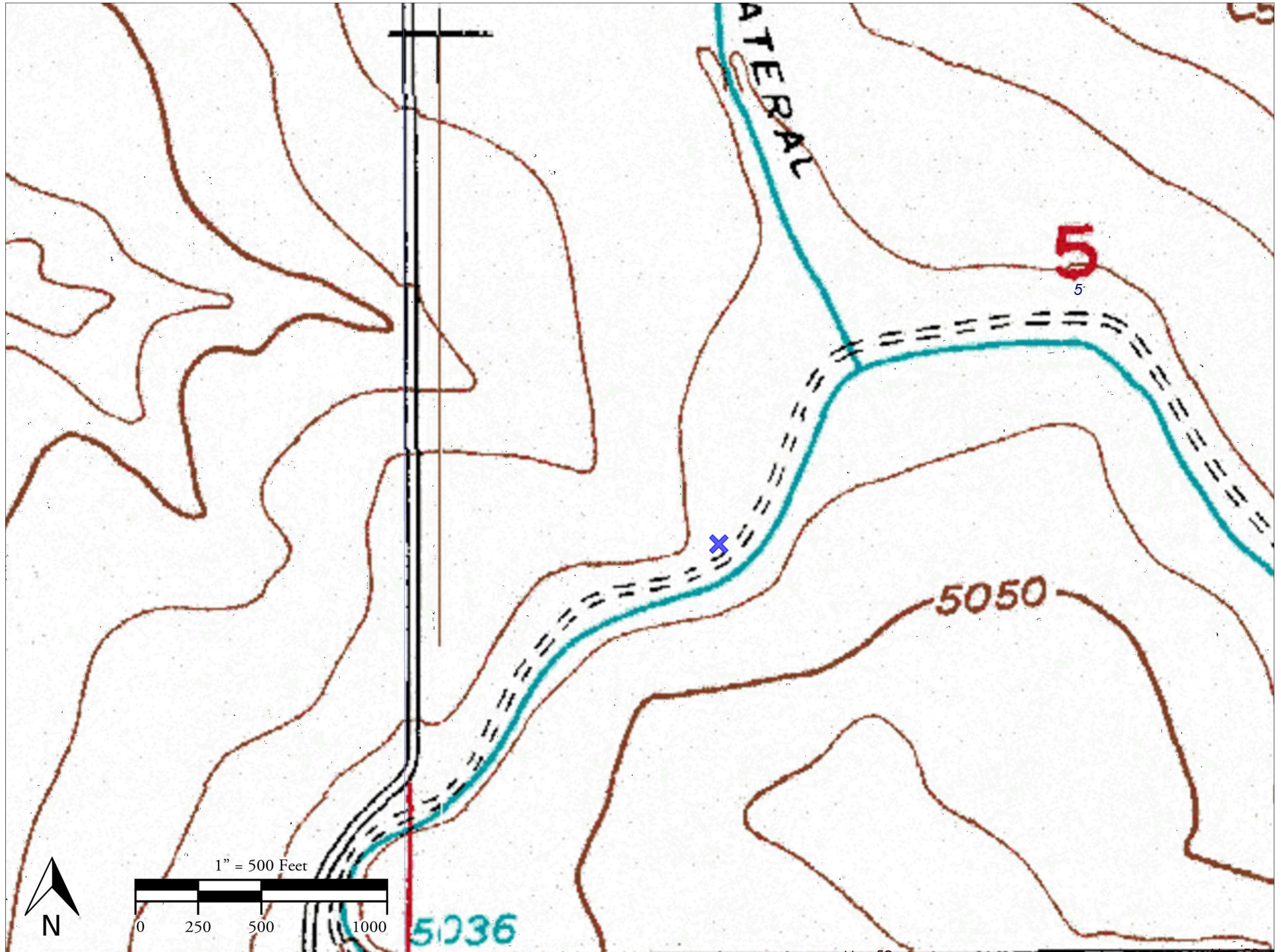




Topo Map



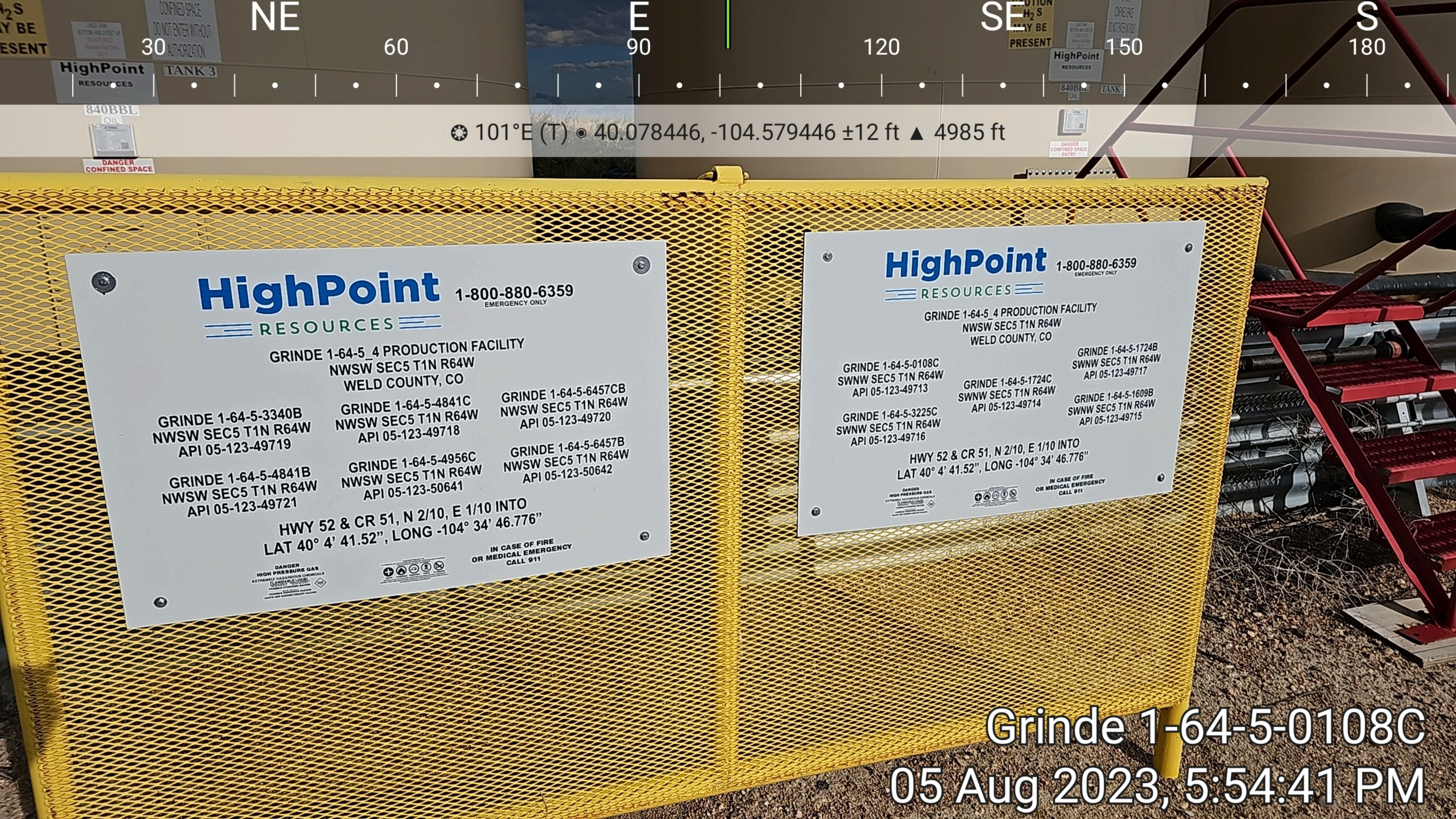
Grinde 1-64-5_4 SWNW

Legend

 Grinde 1-64-5-0108C Sep

 Spill Area

Grinde 1-64-5-0108C Sep



101°E (T) • 40.078446, -104.579446 ±12 ft ▲ 4985 ft

HighPoint
RESOURCES

1-800-880-6359
EMERGENCY ONLY

GRINDE 1-64-5_4 PRODUCTION FACILITY
NWSW SEC5 T1N R64W
WELD COUNTY, CO

GRINDE 1-64-5-3340B
NWSW SEC5 T1N R64W
API 05-123-49719

GRINDE 1-64-5-4841B
NWSW SEC5 T1N R64W
API 05-123-49721

GRINDE 1-64-5-4841C
NWSW SEC5 T1N R64W
API 05-123-49718

GRINDE 1-64-5-4956C
NWSW SEC5 T1N R64W
API 05-123-50641

GRINDE 1-64-5-6457CB
NWSW SEC5 T1N R64W
API 05-123-49720

GRINDE 1-64-5-6457B
NWSW SEC5 T1N R64W
API 05-123-50642

HWY 52 & CR 51, N 2/10, E 1/10 INTO
LAT 40° 4' 41.52", LONG -104° 34' 46.776"

DANGER
HIGH PRESSURE GAS
EXTREMELY HAZARDOUS CHEMICALS
FLAMMABLE & LIQUID
POISONOUS & IRRITANT
PREVENT A CHLORINE GAS RELEASE
AVOID THE VAPOR RELEASED



IN CASE OF FIRE
OR MEDICAL EMERGENCY
CALL 911

HighPoint
RESOURCES

1-800-880-6359
EMERGENCY ONLY

GRINDE 1-64-5_4 PRODUCTION FACILITY
NWSW SEC5 T1N R64W
WELD COUNTY, CO

GRINDE 1-64-5-0108C
SWNW SEC5 T1N R64W
API 05-123-49713

GRINDE 1-64-5-3225C
SWNW SEC5 T1N R64W
API 05-123-49716

GRINDE 1-64-5-1724C
SWNW SEC5 T1N R64W
API 05-123-49714

GRINDE 1-64-5-1724B
SWNW SEC5 T1N R64W
API 05-123-49717

GRINDE 1-64-5-1609B
SWNW SEC5 T1N R64W
API 05-123-49715

HWY 52 & CR 51, N 2/10, E 1/10 INTO
LAT 40° 4' 41.52", LONG -104° 34' 46.776"

DANGER
HIGH PRESSURE GAS
EXTREMELY HAZARDOUS CHEMICALS
FLAMMABLE & LIQUID
POISONOUS & IRRITANT
PREVENT A CHLORINE GAS RELEASE
AVOID THE VAPOR RELEASED



IN CASE OF FIRE
OR MEDICAL EMERGENCY
CALL 911

Grinde 1-64-5-0108C
05 Aug 2023, 5:54:41 PM



SW

W

NW

N

240

270

300

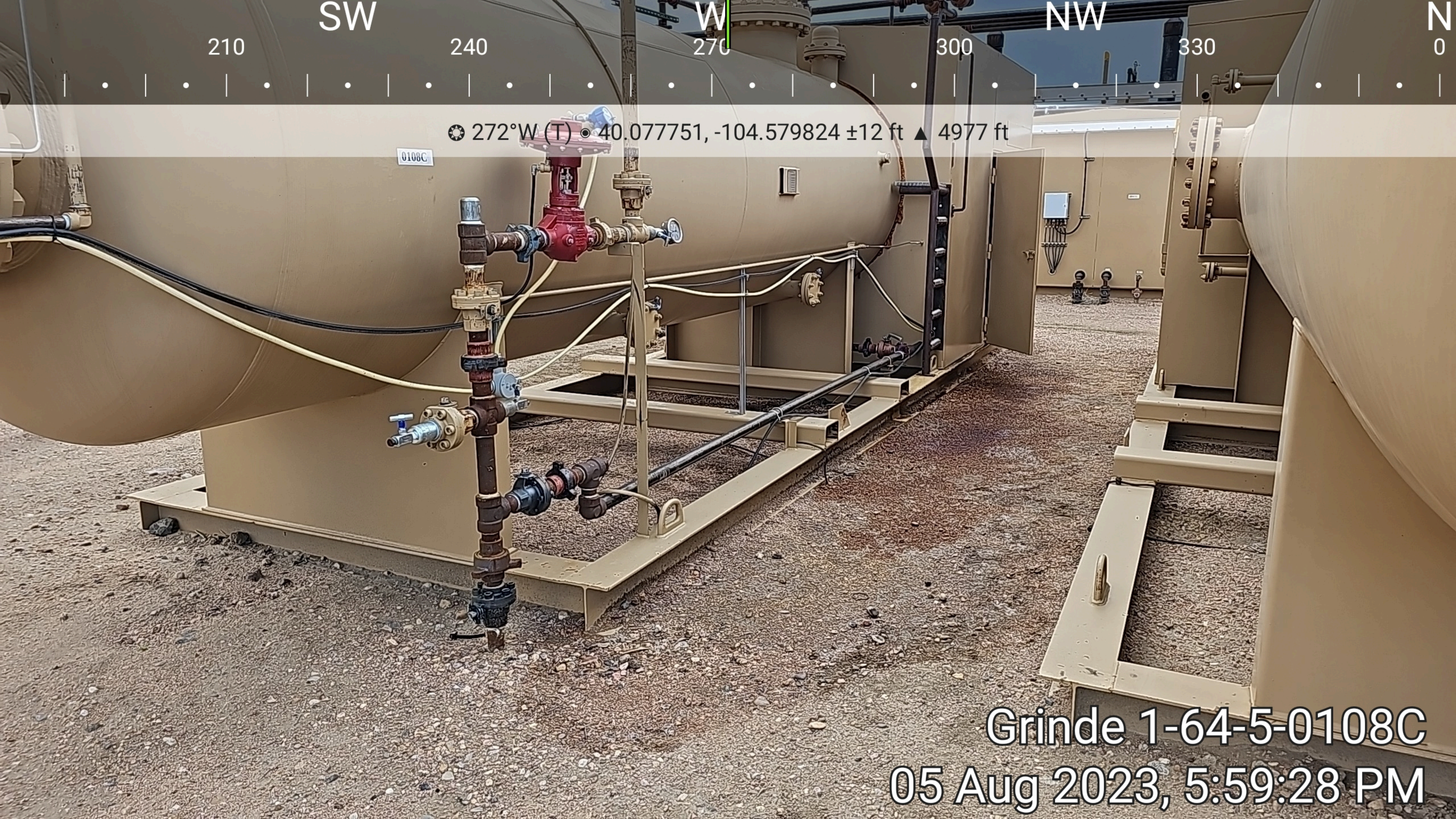
330

0

30

☉ 312°NW (T) • 40.077716, -104.579864 ±12 ft ▲ 4971 ft

Grinde 1-64-5-0108C
05 Aug 2023, 5:59:08 PM



SW

W

NW

N

210

240

270

300

330

0

☉ 272°W (T) ☉ 40.077751, -104.579824 ±12 ft ▲ 4977 ft

0108C

Grinde 1-64-5-0108C
05 Aug 2023, 5:59:28 PM

60 90 120 150

E SE

☉ 117°E (T) ☉ 40.077756, -104.579958 ±12 ft ▲ 4991 ft

Grinde 1-64-5-0108C
05 Aug 2023, 6:00:27 PM

Grinde 1-64-5-0108C
05 Aug 2023, 6:00:27 PM

120

SE

150

S

180

SW

210

240

W

270

☉ 187°S (T) • 40.077742, -104.579893 ±12 ft ▲ 4982 ft

Grinde 1-64-5-0108C

05 Aug 2023, 6:00:40 PM



NE

E

30

60

90

120

☀ 70°NE (T) ● 40.077745, -104.5799 ±12 ft ▲ 4977 ft

Grinde 1-64-5-0108C
05 Aug 2023, 6:00:50 PM



56°NE (T) 40.077712, -104.579962 ±12 ft 4984 ft

Grinde 1-64-5-0108C
05 Aug 2023, 6:01:44 PM



Grinde 1-64-5-0108C
05 Aug 2023, 6:01:54 PM



NW

N

NE

E

300

330

0

30

60

90

19°N (T) 40.077736, -104.579907 ±12 ft 4981 ft

Grinde 1-64-5-0108C
05 Aug 2023, 6:08:51 PM



330

N

0

NE

30

60

E

90

SE

120

55°NE (T) • 40.077737, -104.579948 ±12 ft ▲ 4982 ft

Grinde 1-64-5-0108C
05 Aug 2023, 6:09:11 PM