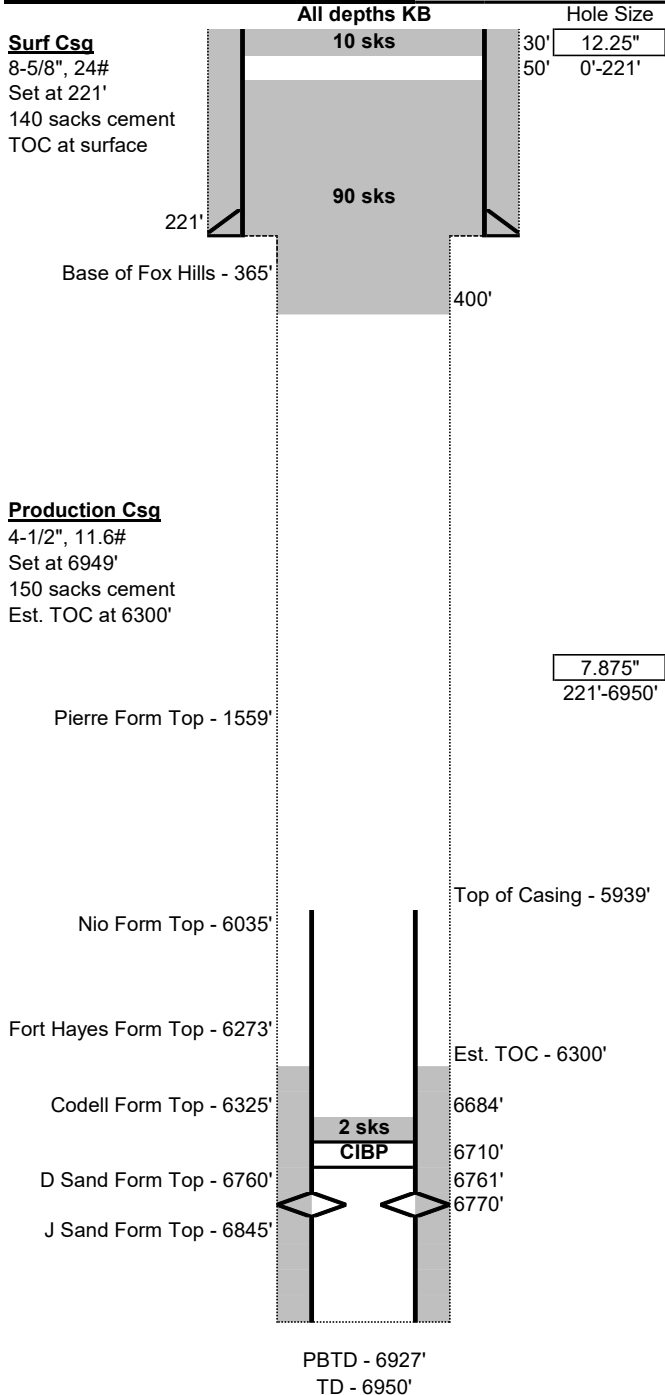


Current Wellbore Schematic

Well Name: Crawford 1
 Location: 1980' FSL, 1980' FEL, NWSE Sec 7, T7N, R59W
 County: Weld
 API #: 05-123-14374
 Co-ordinates: 40.587816 / -104.018899
 Elevations: GROUND: 4902'
 KB: 4912'
 Depths (KB): PBTD: 6927'
 TD: 6950'

Date Prepared: 7/16/2023
 Last Updated: 7/16/2023
 Spud Date: 8/19/1989
 Completion Start Date: 8/26/1989
 Last Workover Date: 3/12/1996
 Prepared by: Jake Van Bramer
 Updated by: --



Surface Casing:
 Drilled 12-1/4" surface hole to 221'
 Set 8-5/8", 24# casing at 221'
 Cemented with 140 sks
 TOC at surface

Production Casing:
 Drilled 7-7/8" production hole to 6950'
 Set 4-1/2", 11.6# casing at 6949'
 Cemented with 150 sks
 Est. TOC at 6,300'

Open Hole:
 7-7/8" Open Hole from 221'-5,939', expected to be washed out

Tubing:
 None

Rods:
 None

Perforations:
 Perfs: 40 - 0.38" holes from 6,761'-6,770'

P&A Plugs:
 1. 10 sks from 30' to surface
 2. 90 sks from 50'-400'
 3. 2 sks on top of CIBP from 6,684'-6,710'

Additional Notes:
 Broke down formation with 1000 gals 2% KCl
 Frac'ed with a total slurry of 36,500 gals and 55,000# 20/40 sand

Initial Potential Test:
 (11/29/1989) 24 hour test
 47 bbl oil, 1 bbl water
 Csg P: 360, Tbg P: 210

Formation Tops:

Base of the Fox Hills	365'
Pierre	1559'
Niobrara	6035'
Fort Hayes	6273'
Codell	6325'
D Sand	6760'
J Sand	6845'

Proposed Wellbore Schematic

Well Name: Crawford 1
 Location: 1980' FSL, 1980' FEL, NWSE Sec 7, T7N, R59W
 County: Weld
 API #: 05-123-14374
 Co-ordinates: 40.587816 / -104.018899
 Elevations: GROUND: 4902'
 KB: 4912'
 Depths (KB): PBTD: 6927'
 TD: 6950'

Date Prepared: 7/16/2023
 Last Updated: 7/16/2023
 Spud Date: 8/19/1989
 Completion Start Date: 8/26/1989
 Last Workover Date: 3/12/1996
 Prepared by: Jake Van Bramer
 Updated by: --

