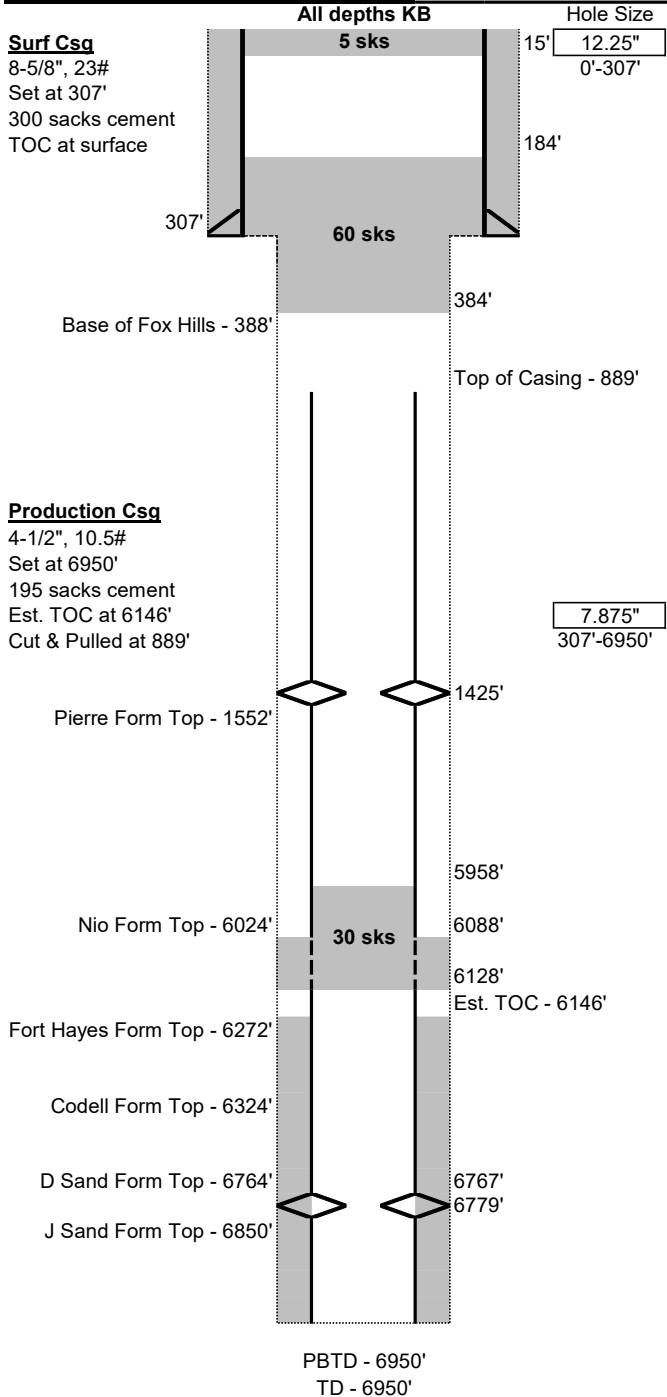


Current Wellbore Schematic

Well Name: Roth 11-7
 Location: 2000' FSL, 2050' FWL, NESW Sec 7, T7N, R59W
 County: Weld
 API #: 05-123-14673
 Co-ordinates: 40.587886 / -104.023650
 Elevations: GROUND: 4896'
 KB: 4905'
 Depths (KB): PBTD: 6950'
 TD: 6950'

Date Prepared: 7/16/2023
 Last Updated: 7/16/2023
 Spud Date: 7/26/1990
 Completion Start Date: 7/31/1990
 Last Workover Date: 8/18/1990
 Prepared by: Jake Van Bramer
 Updated by: --



Surface Casing:
 Drilled 12-1/4" surface hole to 307'
 Set 8-5/8", 23# casing at 307'
 Cemented with 300 sks
 TOC at surface

Production Casing:
 Drilled 7-7/8" production hole to 6950'
 Set 4-1/2", 10.5# casing at 6950'
 Cemented with 195 sks
 Est. TOC at 6,146' (Calculated)
 Casing collapsed at 6128'
 Cut and Pulled at 889'

Open Hole:
 7-7/8" Open Hole from 307'-889', expected to be washed out

Tubing:
 None

Rods:
 None

Perforations:
 Perfs: 16 - 0.38" holes from 6,767'-6,771'
 Perfs: 24 - 0.38" holes from 6,773'-6,779'
 Perfs: 2 - holes at 1,425' to attempt to pull casing

P&A Plugs:
 1. 5 sks from 15' to surface
 2. 60 sks from 184'-384'
 3. 30 sks from 5,958'-6,128' (in casing) and 6,088'-6,128' (in annulus, calculated)

Additional Notes:
 Treated with 55 bbls MRS-1 plus 70 bbls on backside

Initial Potential Test:

Formation Tops:	
Base of the Fox Hills	388'
Pierre	1552'
Niobrara	6024'
Fort Hayes	6272'
Codell	6324'
D Sand	6764'
J Sand	6850'

Proposed Wellbore Schematic

Well Name: Roth 11-7
 Location: 2000' FSL, 2050' FWL, NESW Sec 7, T7N, R59W
 County: Weld
 API #: 05-123-14673
 Co-ordinates: 40.587886 / -104.023650
 Elevations: GROUND: 4896'
 KB: 4905'
 Depths (KB): PBTD: 6950'
 TD: 6950'

Date Prepared: 7/16/2023
 Last Updated: 7/16/2023
 Spud Date: 7/26/1990
 Completion Start Date: 7/31/1990
 Last Workover Date: 8/18/1990
 Prepared by: Jake Van Bramer
 Updated by: --

