



**CEMENT BOND  
GAMMA  
CCL LOG**

Company	CIVITAS RESOURCES	Location:	API # : 05-123-34136	Other Services
Well	ARISTOCRAT ANGUS 6-4-4	SEC 4	TWP 3N	RGE 65W
Field	WATTENBERG	Log Measured From	KB	Elevation : 4805'
County	WELD	Drilling Measured From	KB	Elevation : 4805'
State	COLORADO	Permanent Datum	GL	Elevation : 4805'
		NESE		

Date	14-MAY-2023
Run Number	ONE
Depth Driller	7460'
Depth Logger	3510'
Bottom Logged Interval	3500'
Top Log Interval	SURFACE
Open Hole Size	12.25"
Type Fluid	FRESH WATER
Density / Viscosity	---
Max. Recorded Temp.	135 DEG F
Estimated Cement Top	SEE LOG
Time Well Ready	ROA
Time Logger on Bottom	1130
Equipment Number	66
Location	PLATTEVILLE.CO
Recorded By	A.SPILLMAN
Witnessed By	T.FFRY

Borehole Record				Tubing Record			
Run Number	Bit	From	To	Size	Weight	From	To
Casing Record		Size		Wgt/Ft		Top	Bottom
Surface String		8.625"		24#		SURFACE	600'
Prot. String							
Production String		4.5"		11.6#		SURFACE	7539'
Liner							

<<< Fold Here >>>

All interpretations are opinions based on inferences from electrical or other measurements and we cannot and do not guarantee the accuracy or correctness of any interpretation, and we shall not, except in the case of gross or willful negligence on our part, be liable or responsible for any loss, costs, damages, or expenses incurred or sustained by anyone resulting from any interpretation made by any of our officers, agents or employees. These interpretations are also subject to our general terms and conditions set out in our current Price Schedule.

**Comments**

**Log Variables** DatabaseC:\ProgramData\Warrior\Data\civitas resources aristocrat angus 6-4-4 05-123-34136\_05-Dataset field/well/run1/pass7/\_vars\_

**Top - Bottom**

BHTEMP_Src	BOREID	BOTTEMP	CASEOD	CASETHCK	CASEWGHT	MAXAMPL	MINAMPL
	in	degF	in	in	lb/ft	mV	mV

TEMP	7.875	100	4.5	0	11.6	0	1
MINATTN db/ft 0.8	PERFS No	PPT usec 0	SRFTEMP degF 0	TDEPTH ft 0			

**Variable Description**

BHTEMP\_Src : BHTEMP Input Source Selector  
 BOREID : Borehole I.D.  
 BOTTEMP : Bottom Hole Temperature  
 CASEOD : Casing O.D.  
 CASETHCK : Casing Thickness  
 CASEWGHT : Casing Weight  
 MAXAMPL : Maximum Amplitude

MINAMPL : Minimum Amplitude  
 MINATTN : Minimum Attenuation  
 PERFS : Perforation Flag  
 PPT : Predicted Pipe Time  
 SRFTEMP : Surface Temperature  
 TDEPTH : Total Depth

Sensor	Offset (ft)	Schematic	Description	Length (ft)	O.D. (in)	Weight (lb)
HeadVolt	15.73		CHD-Titan Titan 1 7/16" GO Cablehead	1.00	1.44	5.00
Temp	12.88		RBT-Probe 2.75 Radii W/Temp (FW1304-128) Probe 2.75" Radial with Integral Temperature Sub	9.21	2.75	90.00
WVFS8	10.65					
WVFS7	10.65					
WVFS6	10.65					
WVFS5	10.65					
WVFS4	10.65					
WVFS3	10.65					
WVFS2	10.65					
WVFS1	10.65					
WVFCAL	10.65					
WVF3FT	10.65					
WVF5FT	9.65					
HEADVOLT	6.40					
CCL	5.44					

			GR-Probe275dig (080831) HT Probe 2 3/4" Gamma CCL	6.40	2.75	57.00
GR	1.42					

Dataset: civitas resources aristocrat angus 6-4-4 05-123-34136\_05-14-2023\_cbl.db: field/well/run1/pass7  
 Total length: 16.60 ft  
 Total weight: 152.00 lb  
 O.D.: 2.75 in

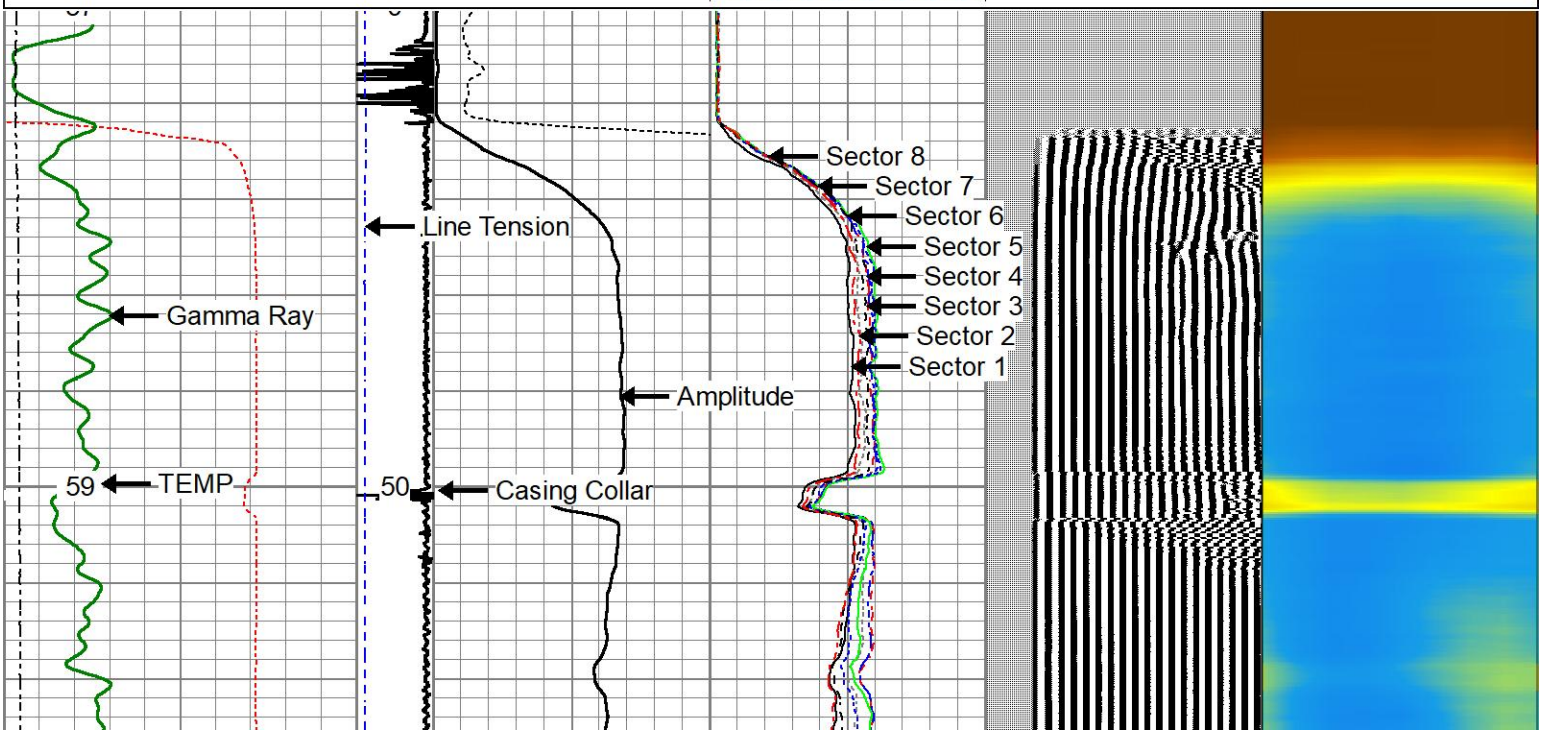


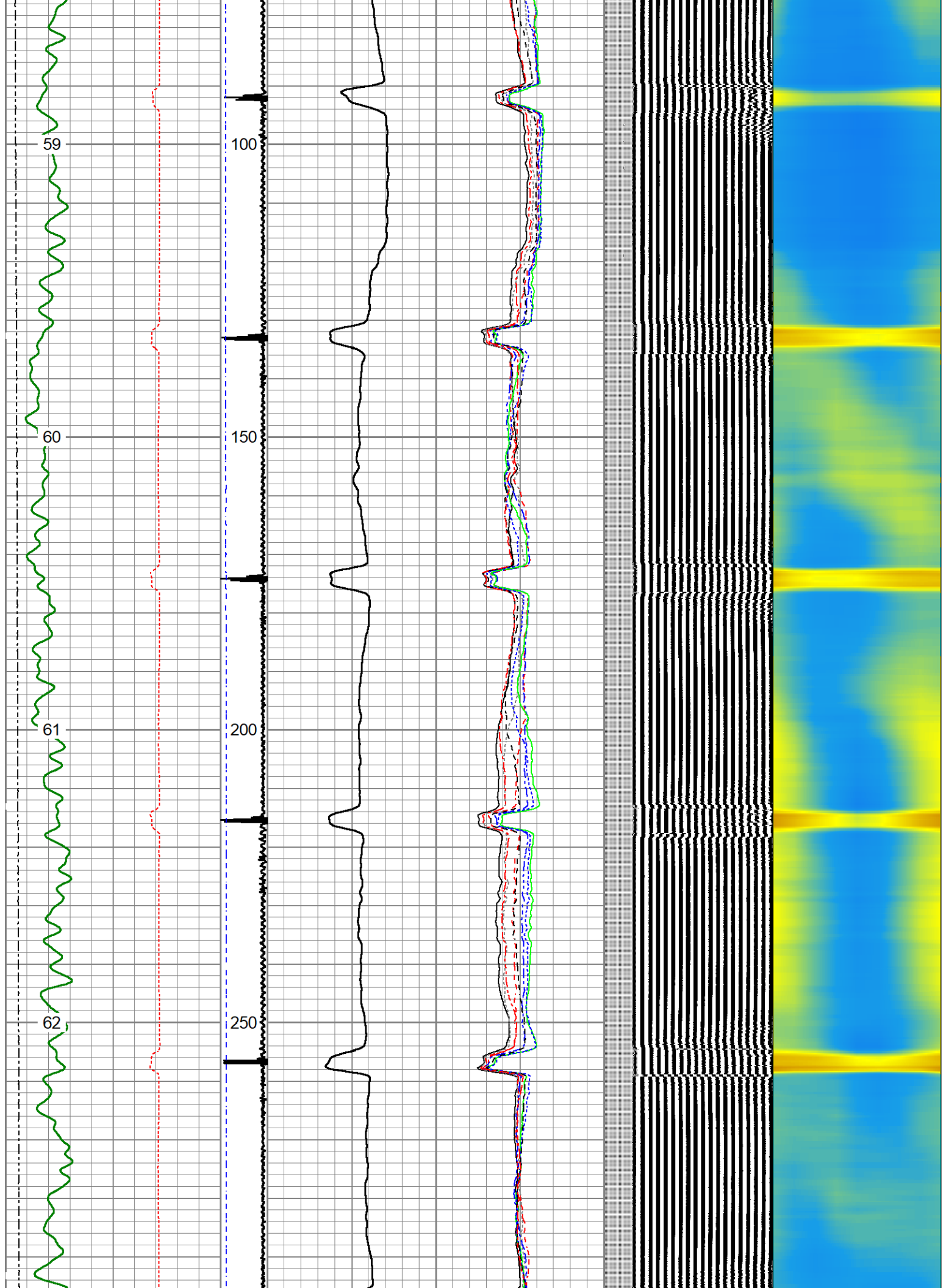
## MAIN PASS

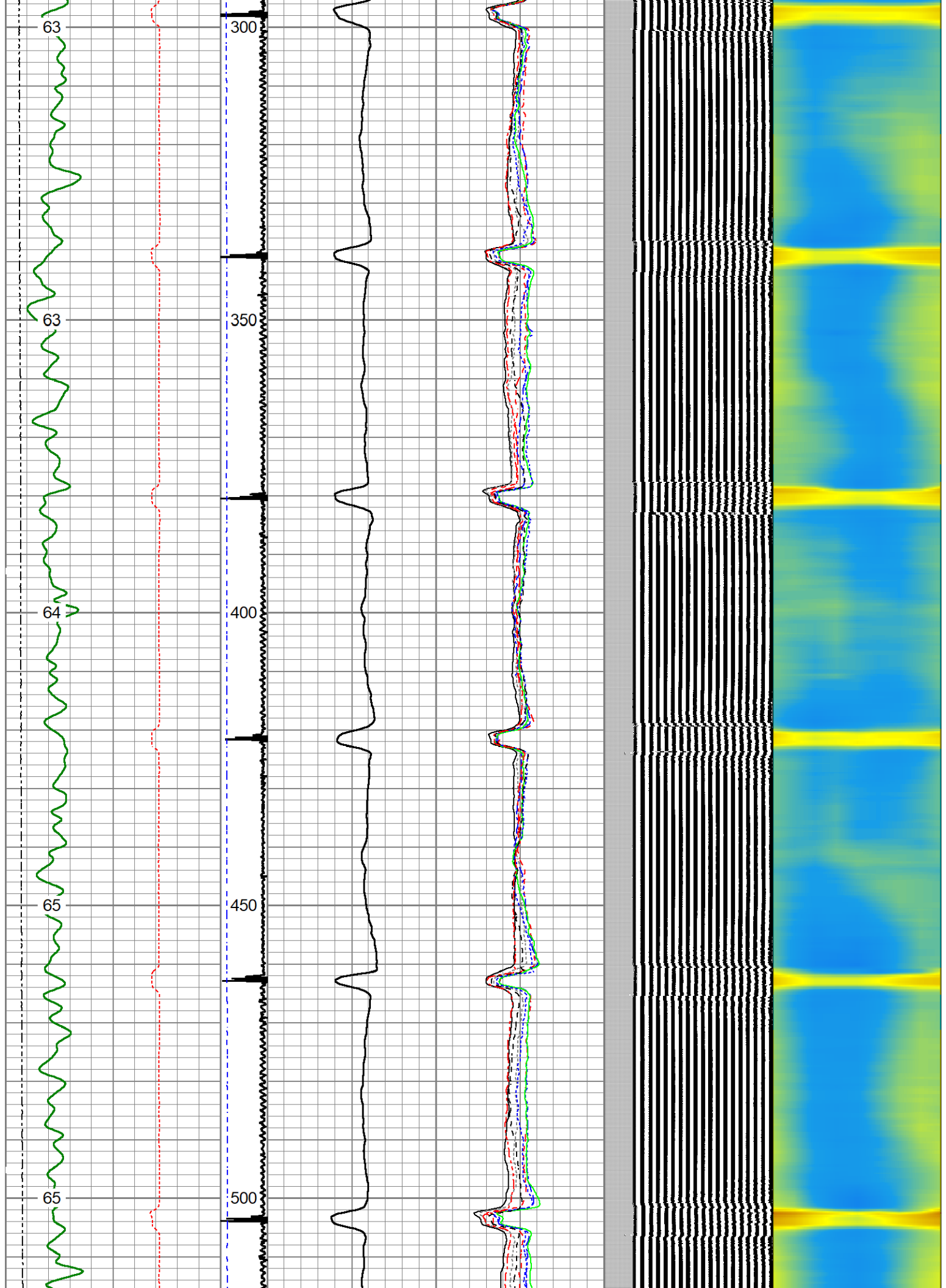
ZERO PSI APPLIED

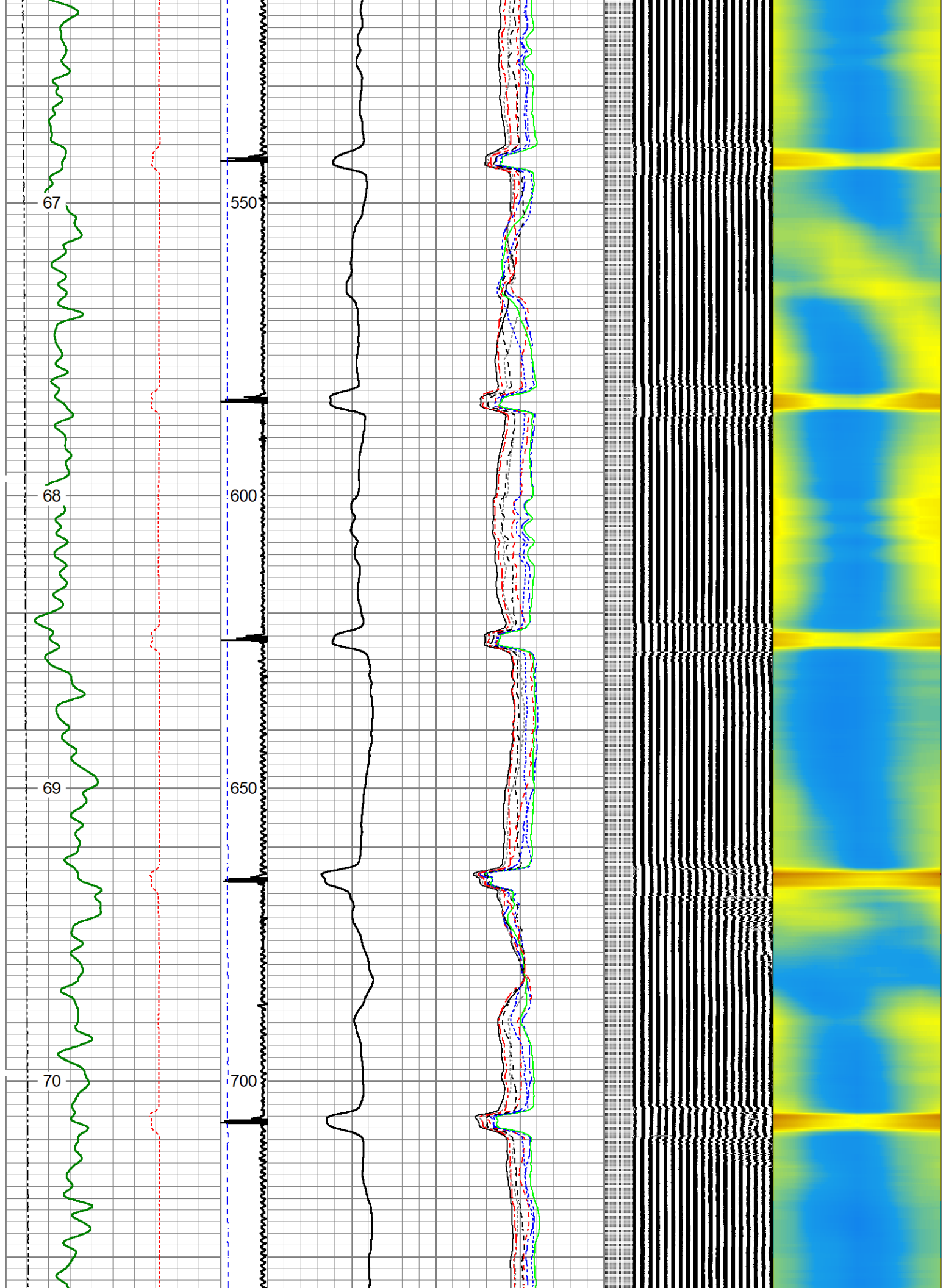
Database File: civitas resources aristocrat angus 6-4-4 05-123-34136\_05-14-2023\_cbl.db  
 Dataset Pathname: pass7  
 Presentation Format: rcbl\_hh  
 Dataset Creation: Sun May 14 12:48:49 2023  
 Charted by: Depth in Feet scaled 1:240

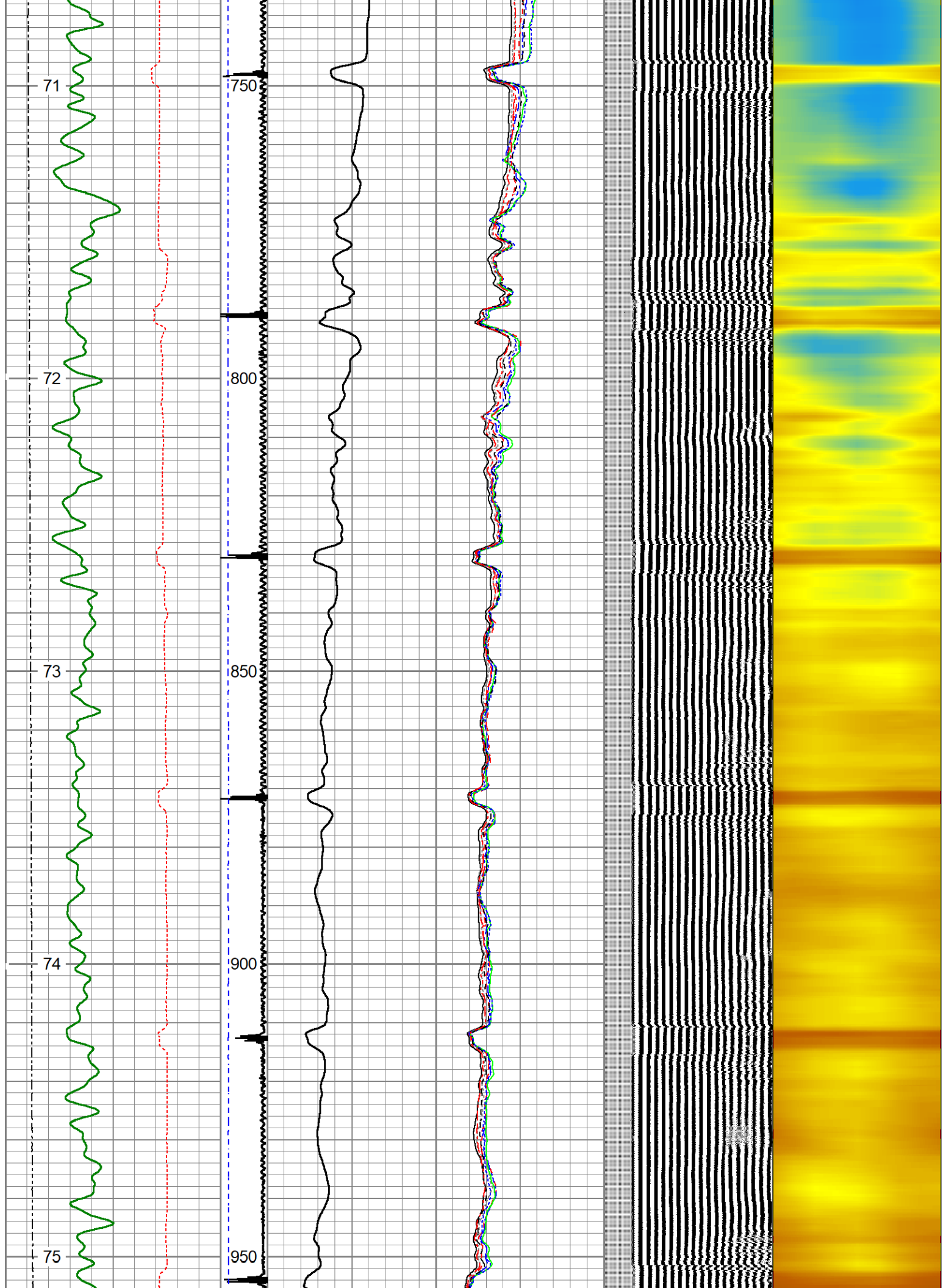
400	Travel Time (usec)	200	ing Co	0	Amplitude (mV)	100	-5	Sector 1	150	Variable Density	1	Cement Map	8
0	Gamma Ray (GAPI)	250	9	-1	Amplified Amplitude		-5	Sector 2	150	200	(usec)	1200	
50	TEMP (degF)	250	e Tens	0	(mV)	10	-5	Sector 3	150				
	TEMP (degF)		(lb)				-5	Sector 4	150				
			(2000)				-5	Sector 5	150				
							-5	Sector 6	150				
							-5	Sector 7	150				
							-5	Sector 8	150				

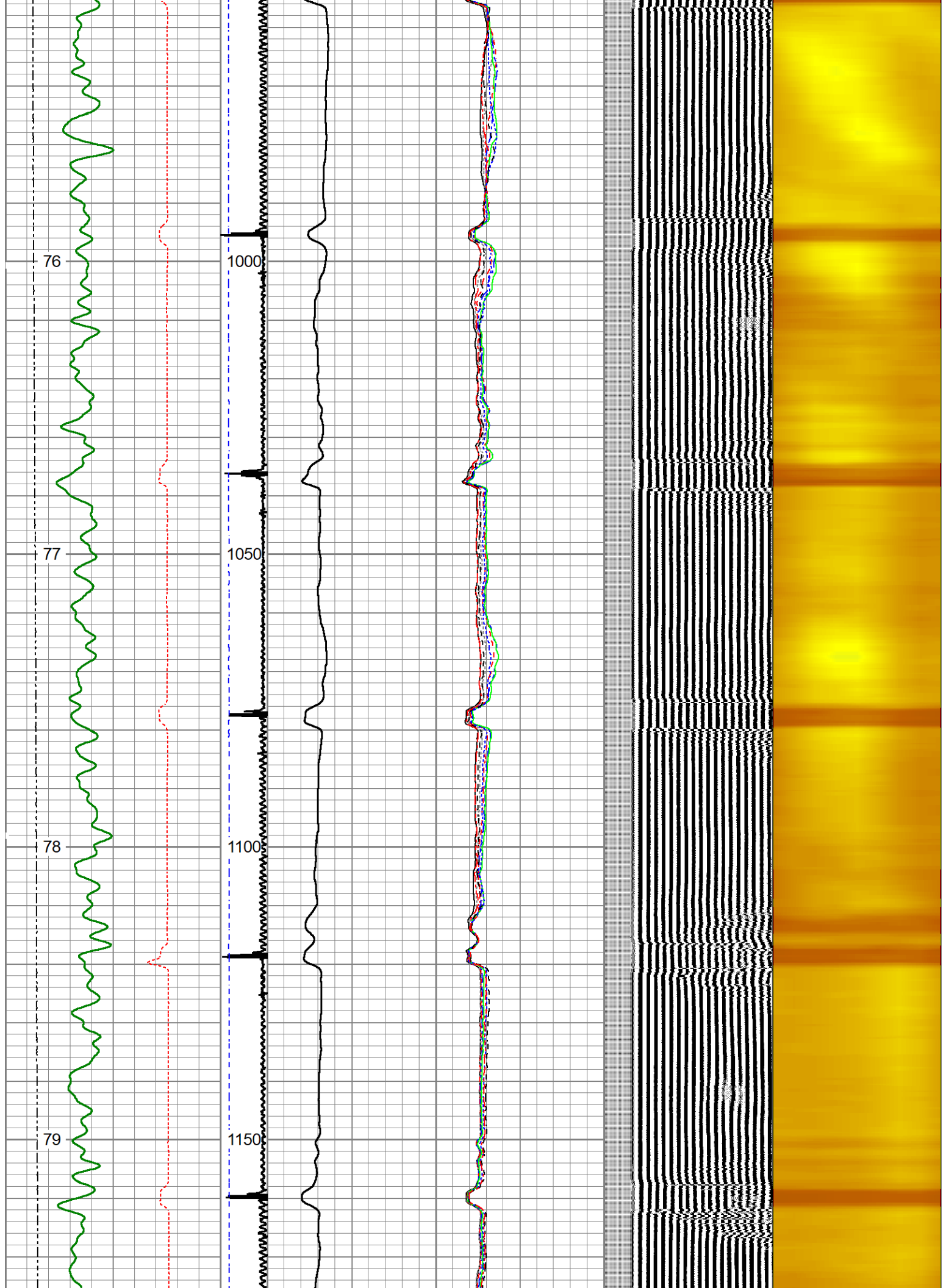


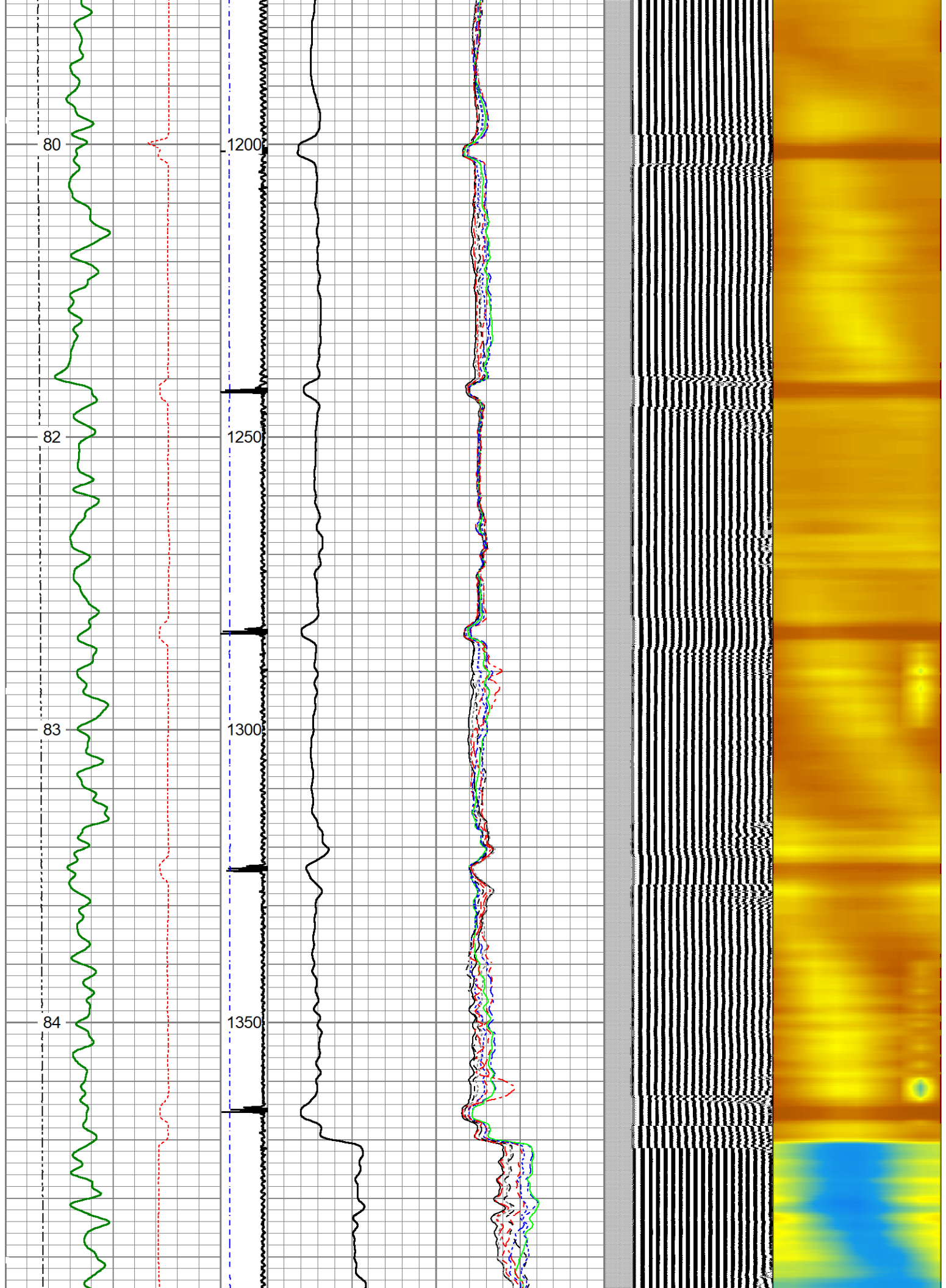


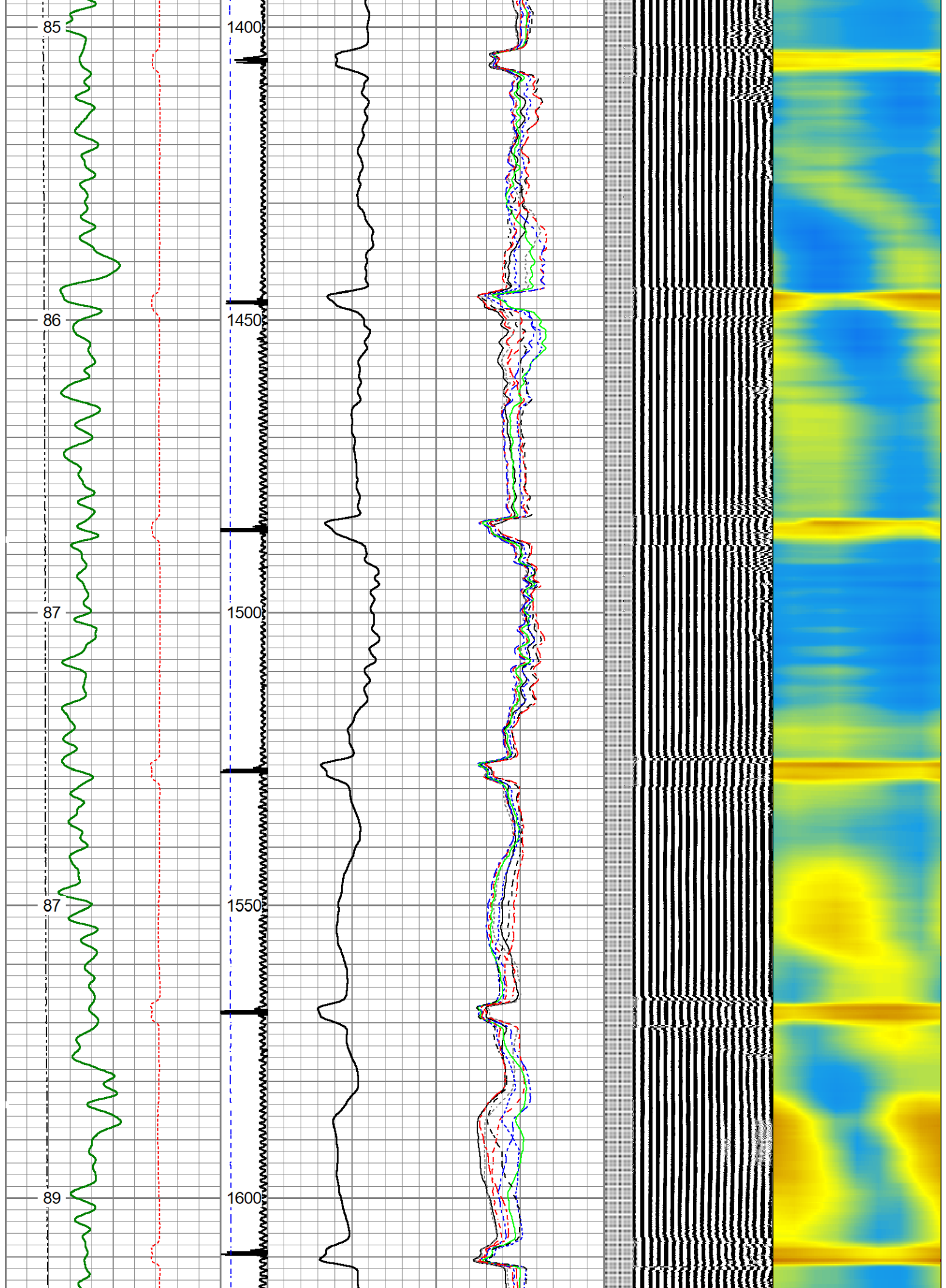


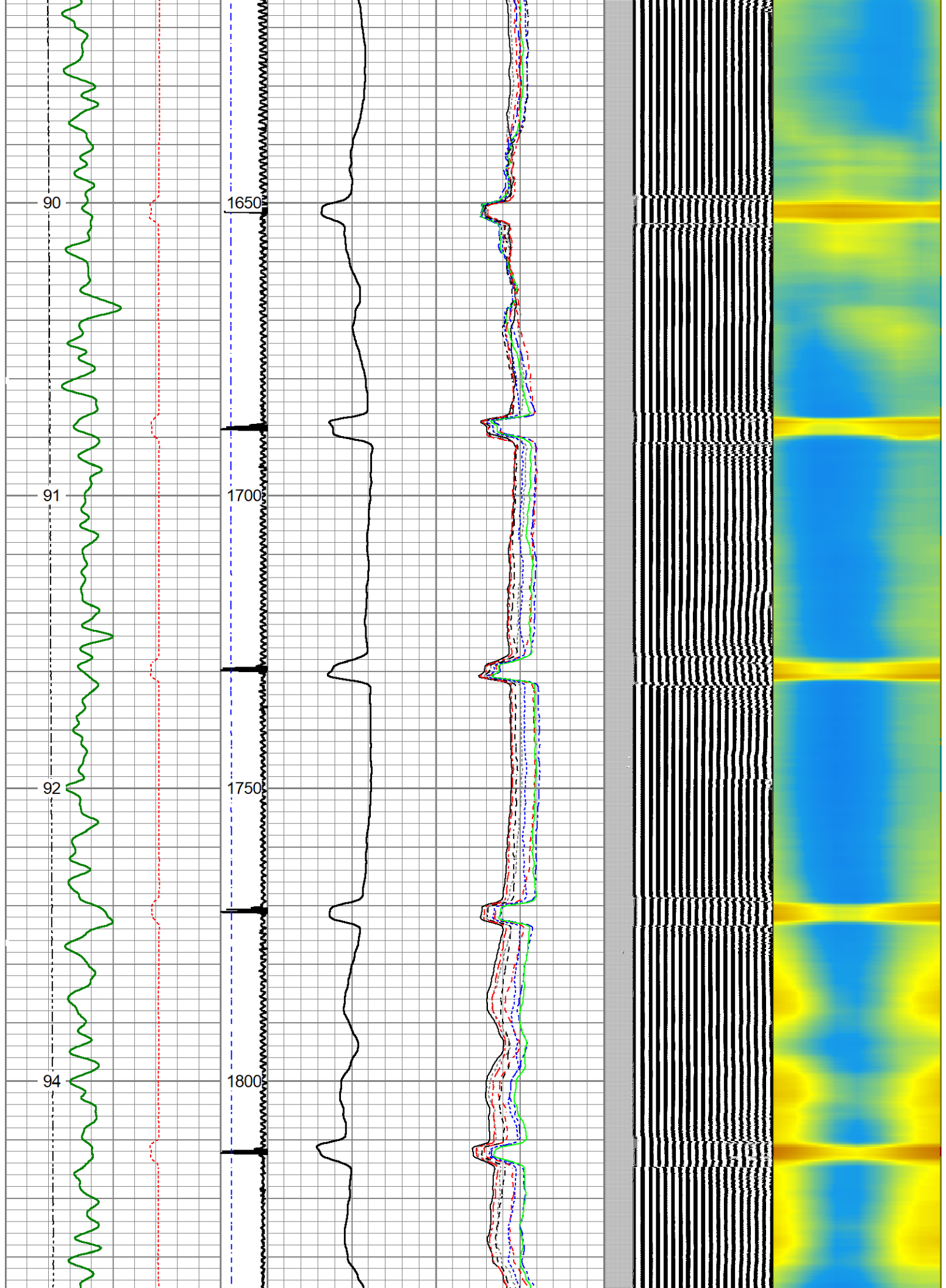


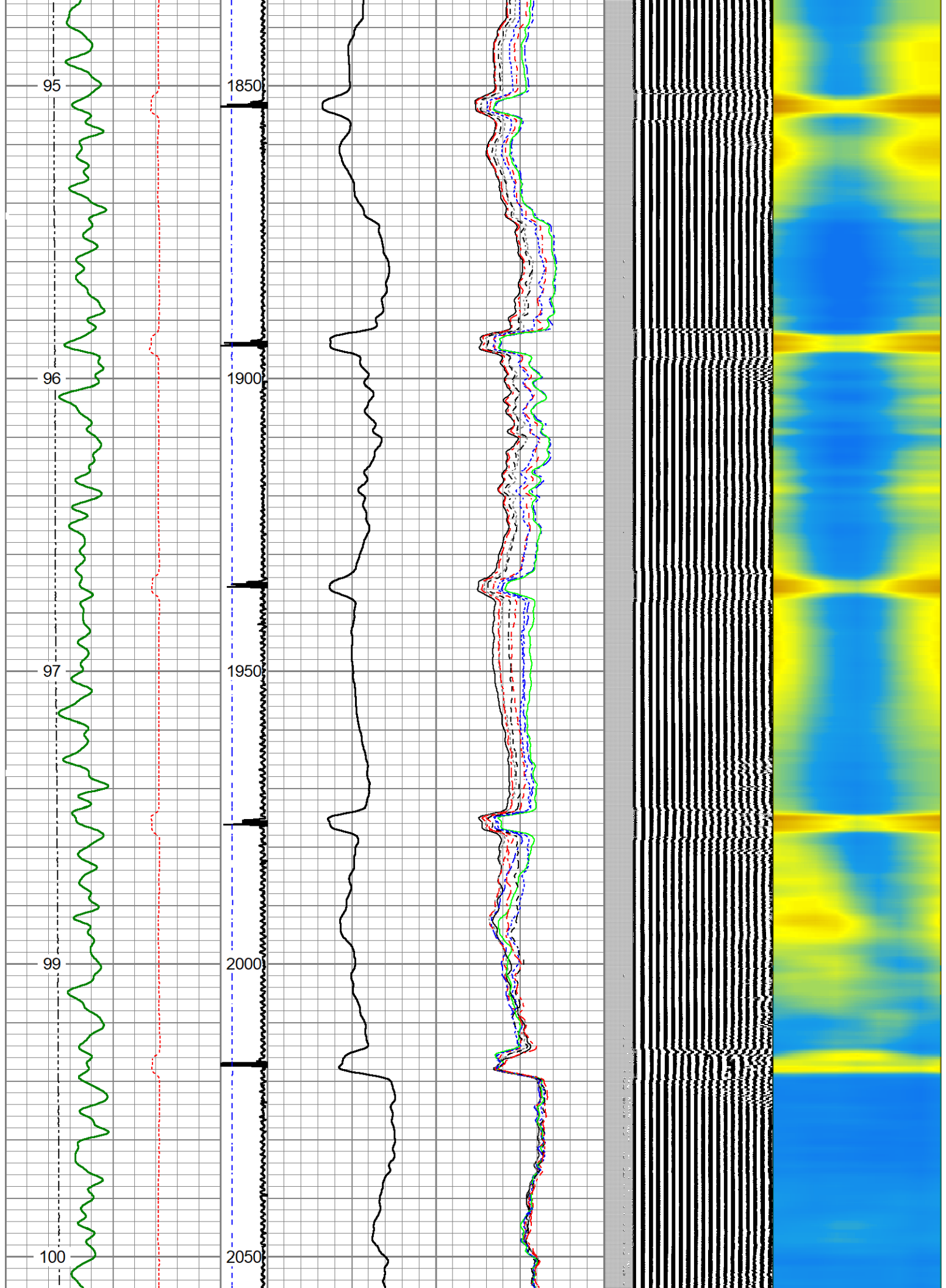


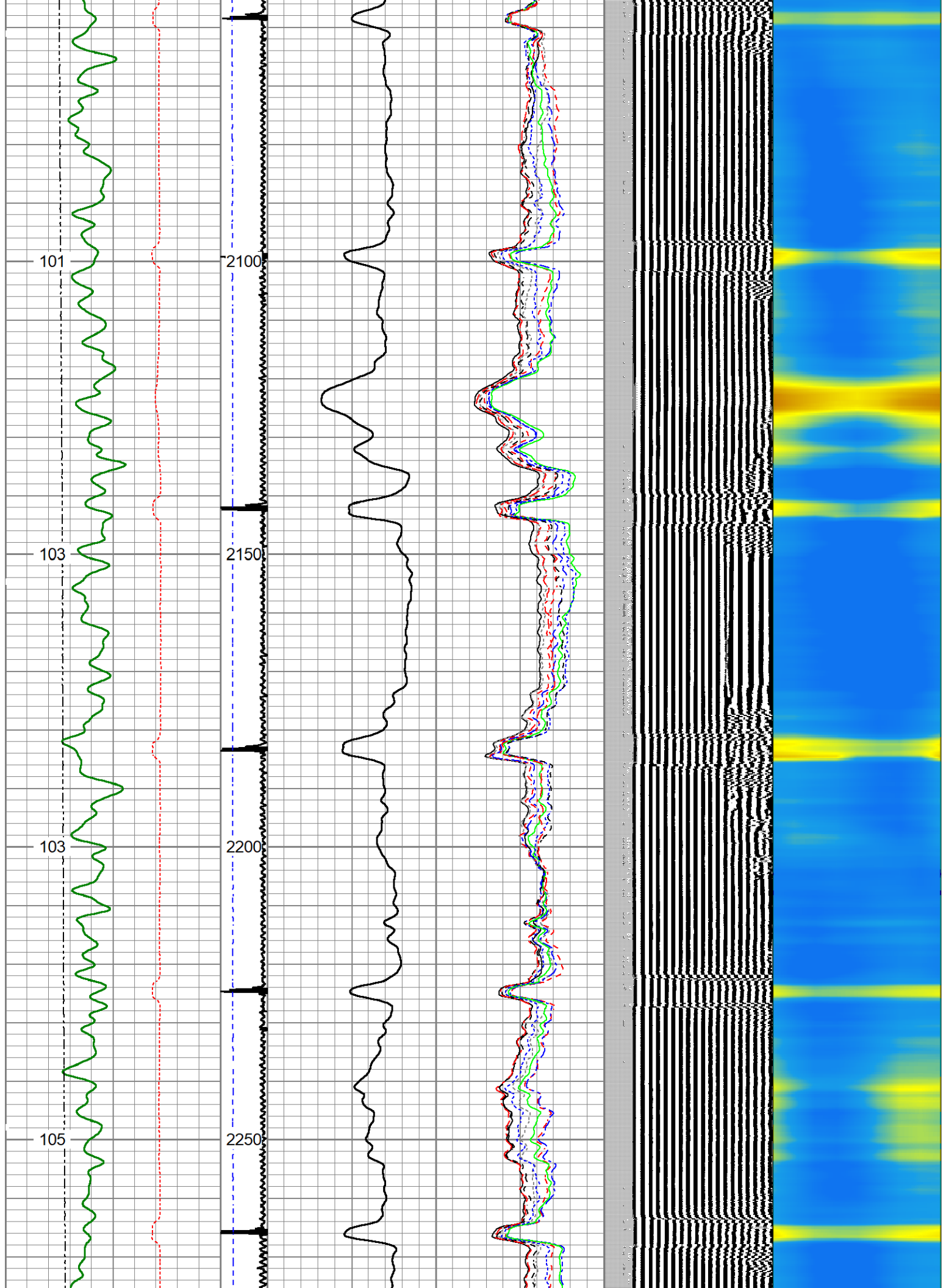


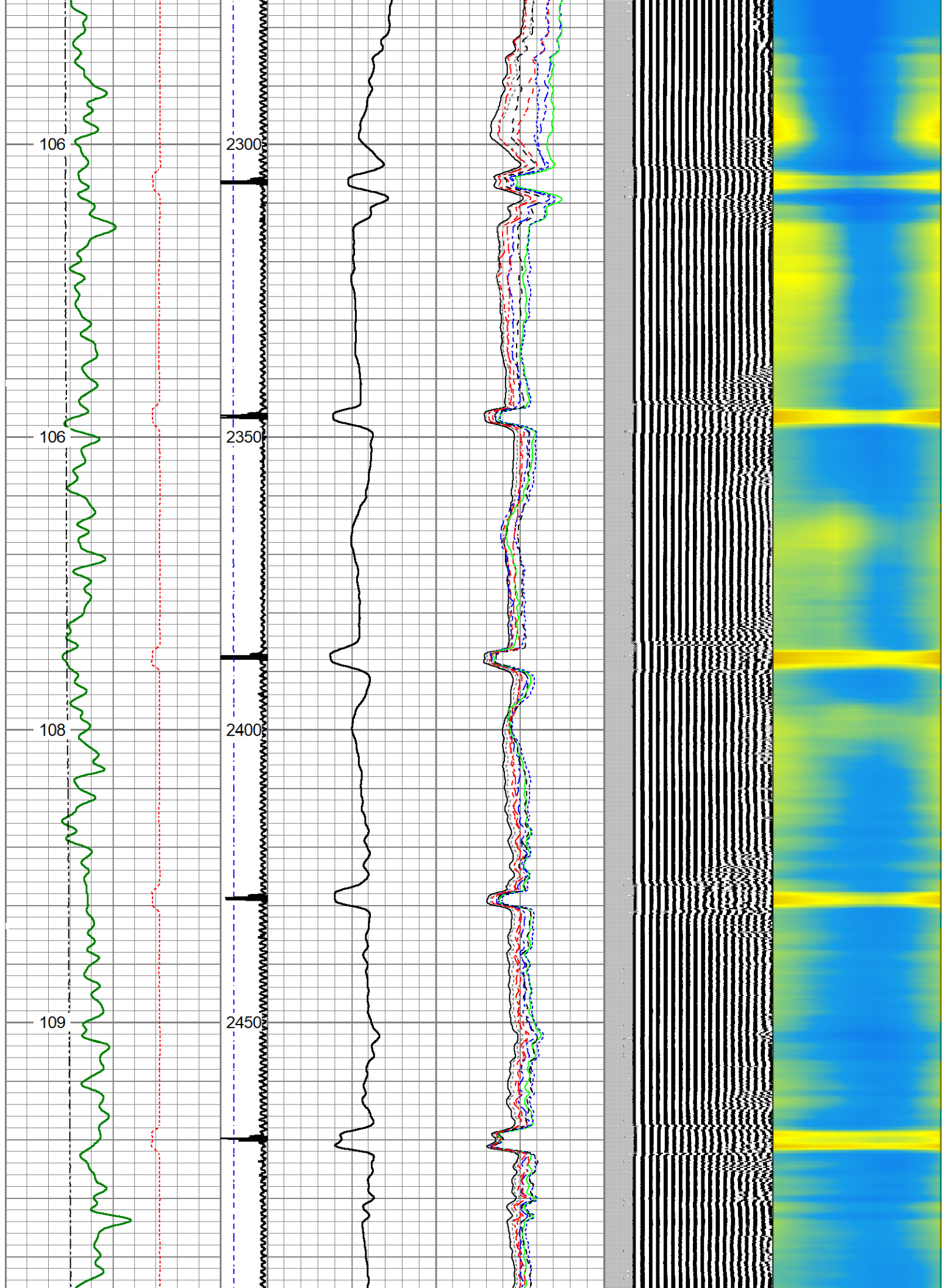


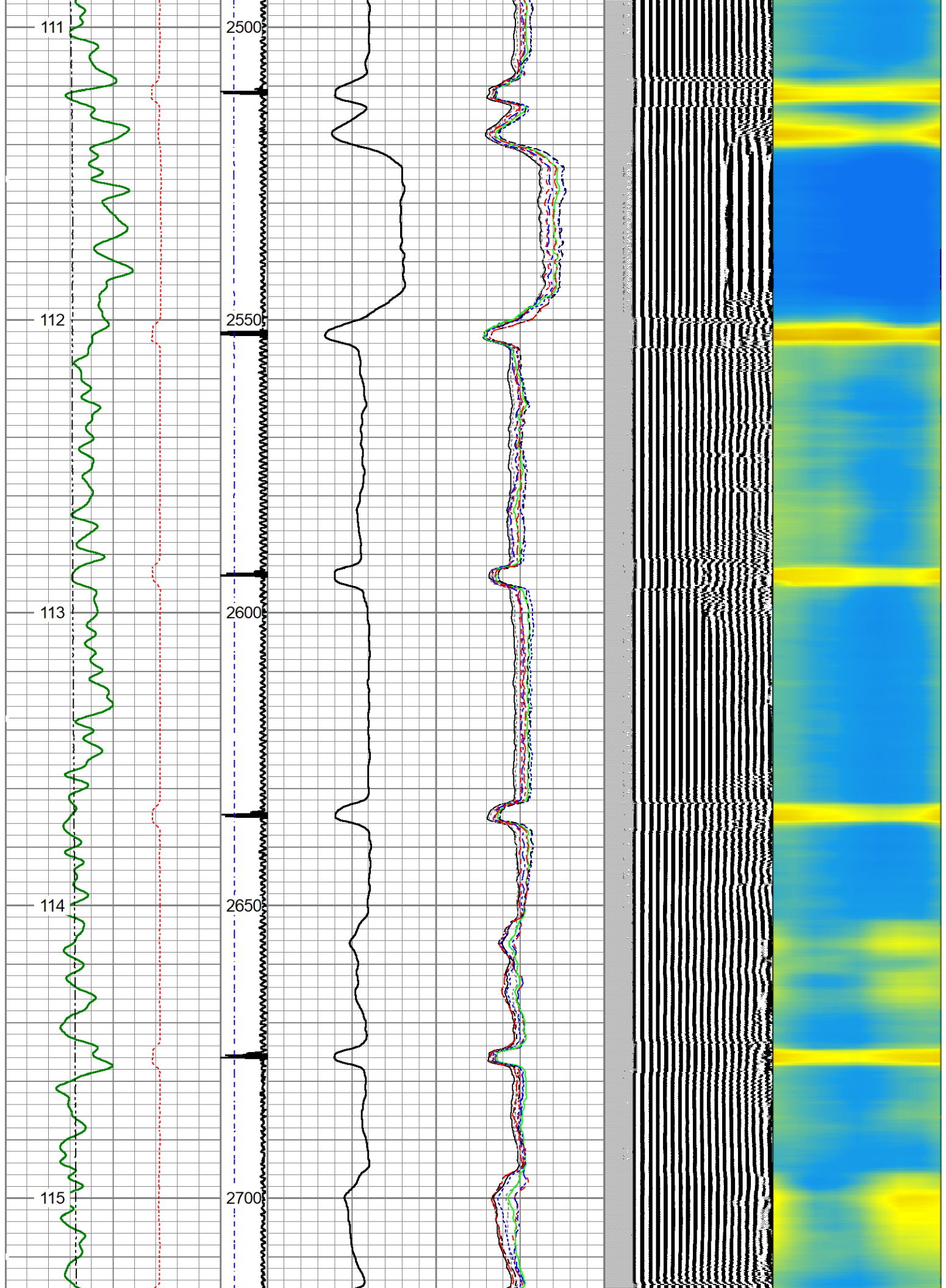


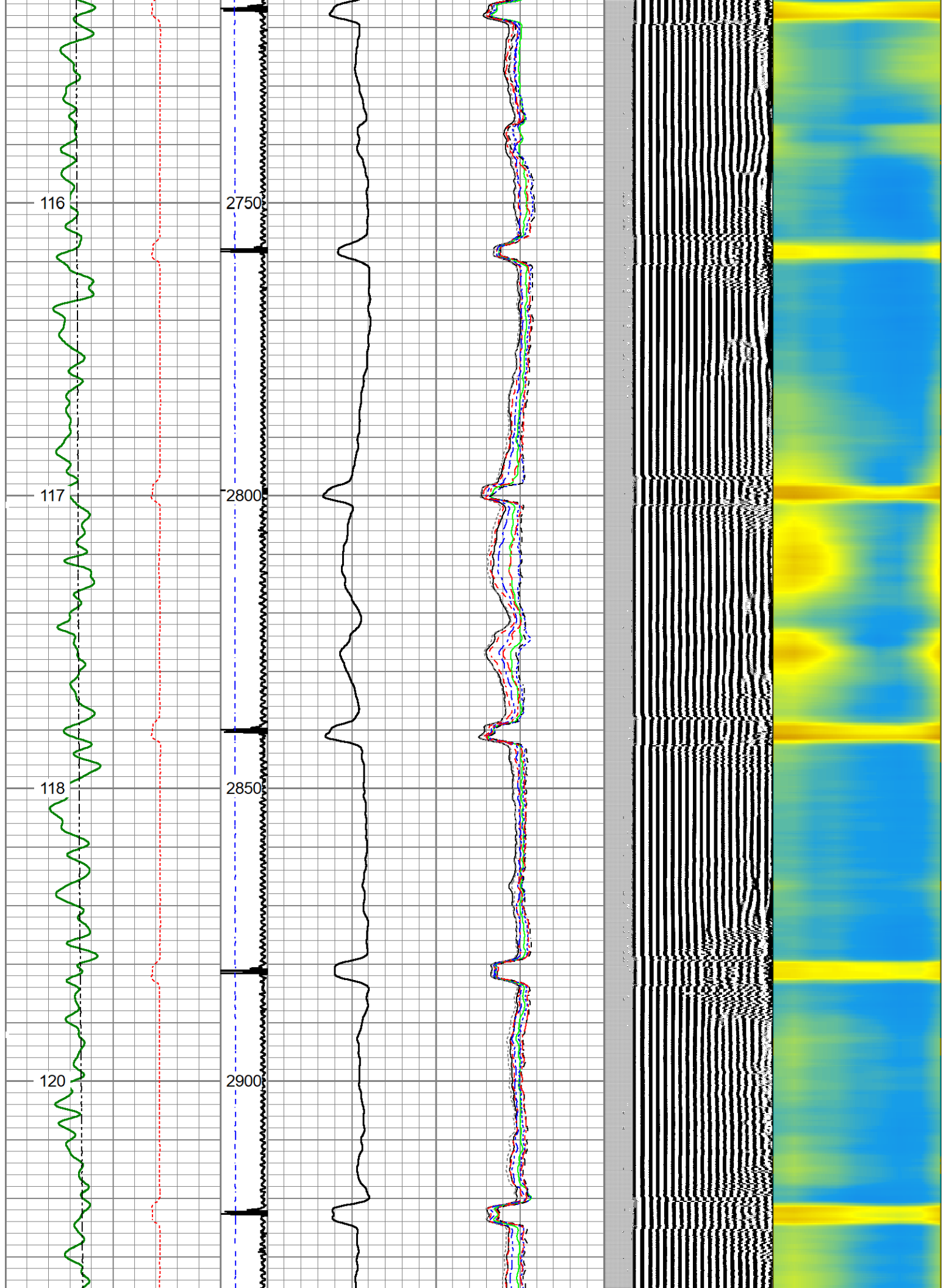


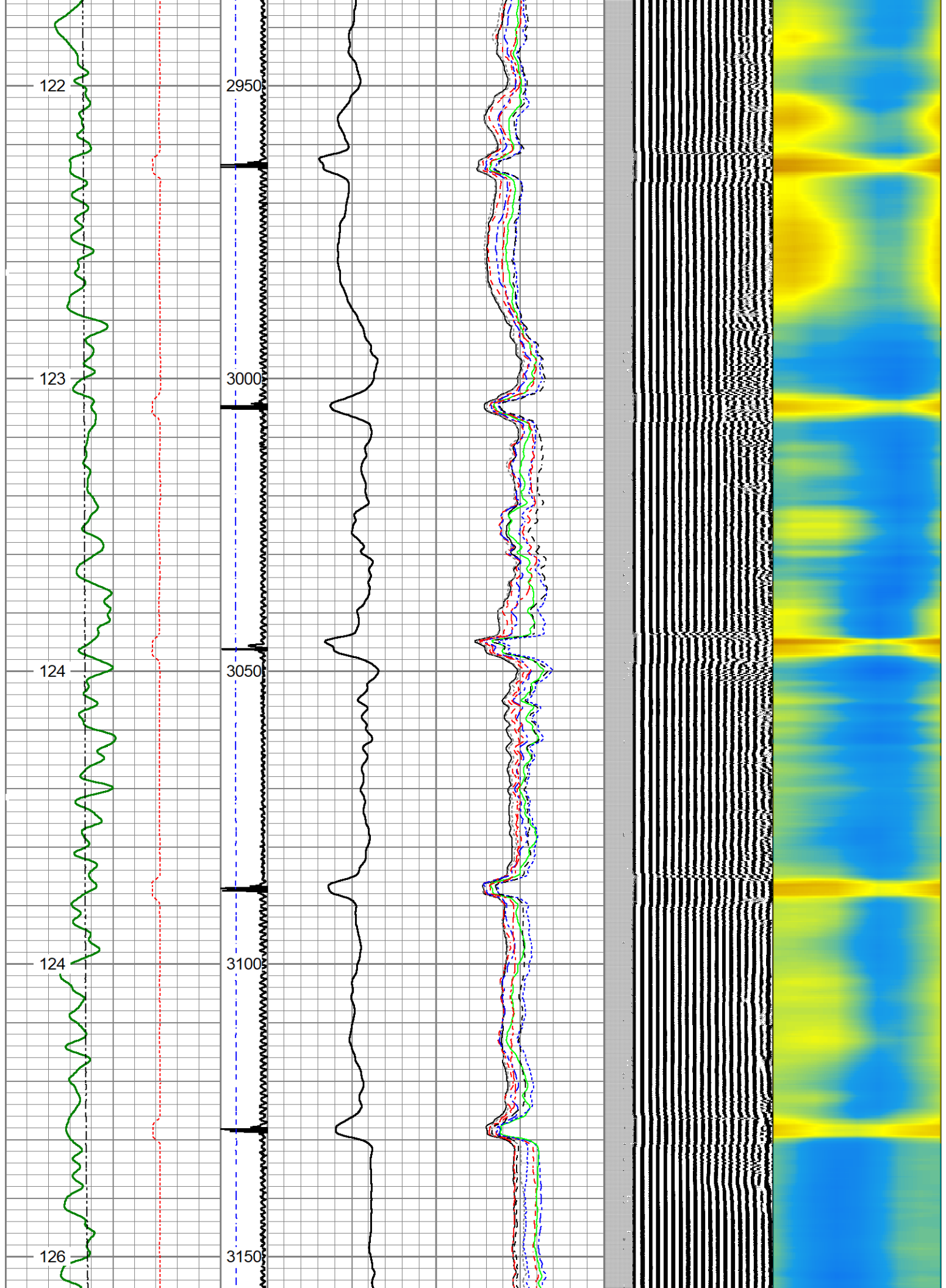


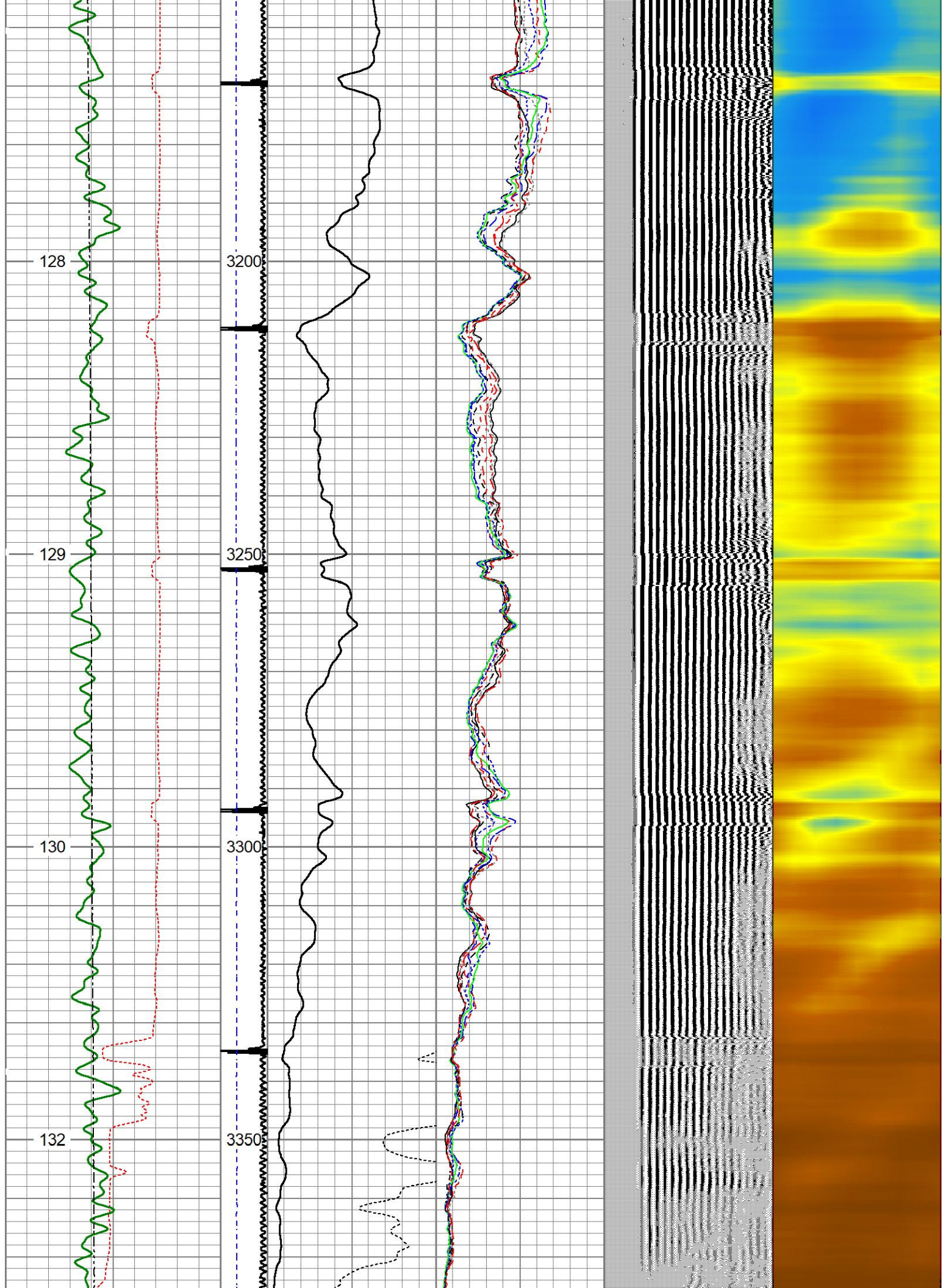


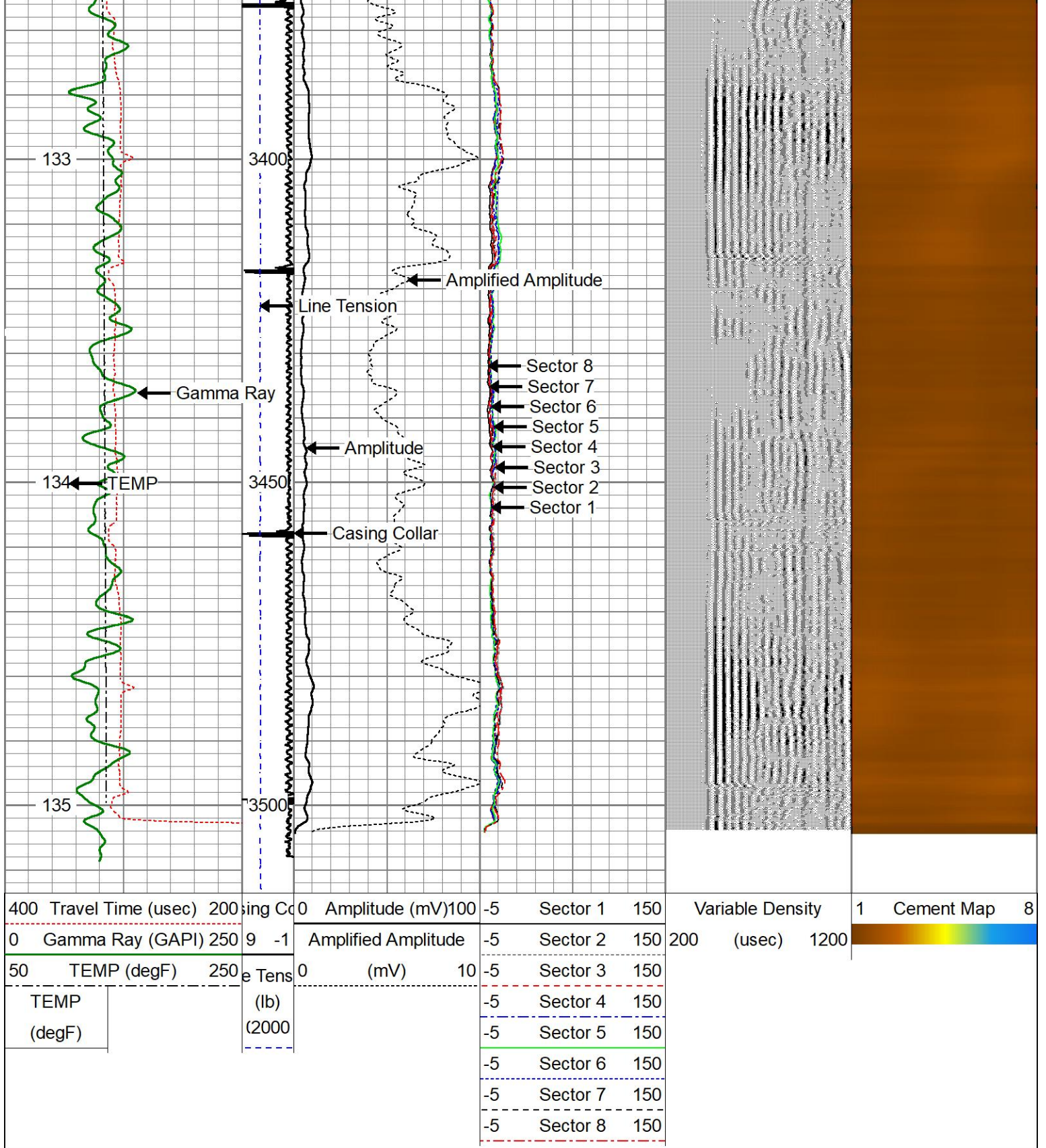










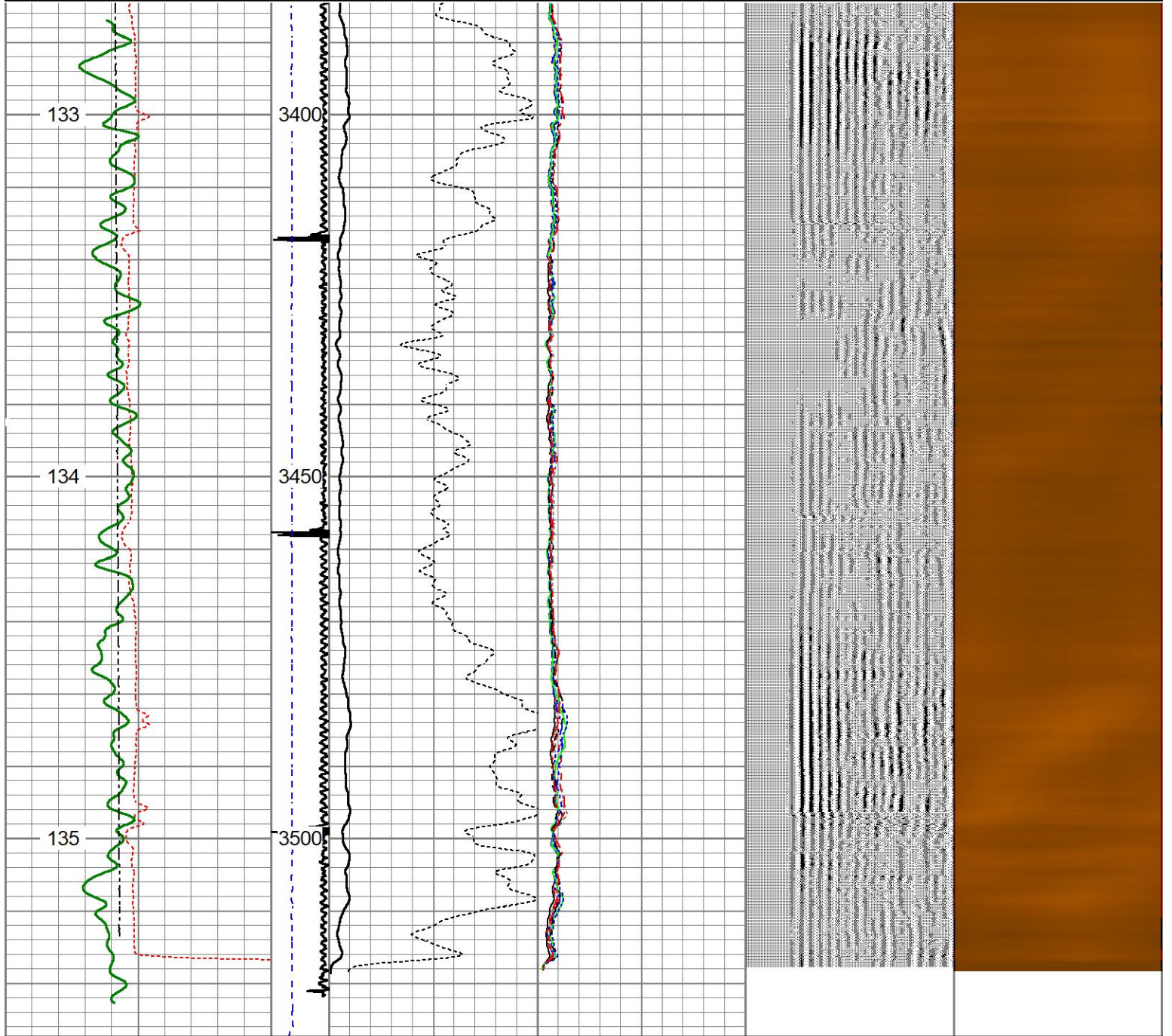


REPEAT PASS

ZERO PSI APPLIED

Database File civitas resources aristocrat angus 6-4-4 05-123-34136\_05-14-2023\_cbl.db  
 Dataset Pathname pass6  
 Presentation Format rcbl\_hh  
 Dataset Creation Sun May 14 12:45:52 2023  
 Charted by Depth in Feet scaled 1:240

400	Travel Time (usec)	200	ing Co	0	Amplitude (mV)	100	-5	Sector 1	150	Variable Density	1	Cement Map	8
0	Gamma Ray (GAPI)	250	9 -1		Amplified Amplitude		-5	Sector 2	150		200 (usec)	1200	
50	TEMP (degF)	250	e Tens	0	(mV)	10	-5	Sector 3	150				
	TEMP (degF)		(lb)				-5	Sector 4	150				
			(2000)				-5	Sector 5	150				
							-5	Sector 6	150				
							-5	Sector 7	150				
							-5	Sector 8	150				



400	Travel Time (usec)	200	ing Co	0	Amplitude (mV)	100	-5	Sector 1	150	Variable Density	1	Cement Map	8
0	Gamma Ray (GAPI)	250	9 -1		Amplified Amplitude		-5	Sector 2	150		200 (usec)	1200	
50	TEMP (degF)	250	e Tens	0	(mV)	10	-5	Sector 3	150				
	TEMP (degF)		(lb)				-5	Sector 4	150				
			(2000)				-5	Sector 5	150				
							-5	Sector 6	150				
							-5	Sector 7	150				

Calibration Report

Database File      civitas resources aristocrat angus 6-4-4 05-123-34136\_05-14-2023\_cbl.db  
 Dataset Pathname    pass7  
 Dataset Creation    Sun May 14 12:48:49 2023

Gamma Ray Calibration Report

Type / Serial:                      Probe275dig / 080831

SHOP CALIBRATION

(Not Performed)

	Counts/Sec.	Gain	Offset	Jig	Units
Background	0.0				cps
Calibrator	1.0				cps
		1.0000			GAPI/cps

PRIMARY VERIFICATION

Background	0.0				cps
Calibrator	0.0				cps
Difference				0.0	GAPI

BEFORE SURVEY VERIFICATION

Background	0.0				cps
Calibrator	0.0				cps
Difference				0.0	GAPI

AFTER SURVEY VERIFICATION

Background	0.0				cps
Calibrator	0.0				cps
Difference				0.0	GAPI

Segmented Cement Bond Log Calibration Report

Serial Number:	FW1304-128
Tool Model:	Probe 2.75 Radii W/Temp
Calibration Casing Diameter:	4.500                      in
Calibration Depth:	2177.642                    ft

Master Calibration, performed Sun May 14 12:39:51 2023:

	Raw (v)		Calibrated (mv)		Results	
	Zero	Cal	Zero	Cal	Gain	Offset
3'	-0.001	0.848	0.800	81.196	94.712	0.909
CAL	-0.001	1.060				
5'	0.000	0.761	0.800	81.196	105.673	0.772
SUM						
S1	0.008	0.970	0.000	100.000	103.941	-0.821
S2	0.002	0.893	0.000	100.000	112.132	-0.179
S3	0.010	0.797	0.000	100.000	126.921	-1.210
S4	0.007	0.774	0.000	100.000	130.267	-0.862
S5	0.010	0.777	0.000	100.000	130.359	-1.329
S6	0.007	0.839	0.000	100.000	120.260	-0.843
S7	0.007	0.896	0.000	100.000	112.515	-0.772
S8	0.007	0.969	0.000	100.000	103.995	-0.777

Internal Reference Calibration, performed (Not Performed):

	Raw (v)		Calibrated (v)		Results	
	Zero	Cal	Zero	Cal	Gain	Offset
CAL	0.000	0.000	-0.001	1.060	1.000	0.000

Air Zero Calibration, performed Sat Feb 25 09:03:50 2023:

	Raw (v)		Calibrated (v)		Results	
	Zero		Zero		Offset	
3'	0.000		0.000		0.000	
5'	0.000		0.000		0.000	
SUM						
S1	0.000		0.000		0.000	
S2	0.000		0.000		0.000	
S3	0.000		0.000		0.000	
S4	0.000		0.000		0.000	
S5	0.000		0.000		0.000	
S6	0.000		0.000		0.000	
S7	0.000		0.000		0.000	
S8	0.000		0.000		0.000	



**Company** CIVITAS RESOURCES  
**Well** ARISTOCRAT ANGUS 6-4-4  
**Field** WATTENBERG  
**Parish** WELD  
**State** COLORADO