

Company **OXY**
 Well **Camp Lewis C "B" Unit 1**
 Field **Wattenberg**
 County **Weld** State **Colorado**

Location **SWSW**
 Sec: 30 / TWN: 3N / RNG: 65W
 Permanent Datum **GL** Elevation **4969'**
 Log Measured From **KB**
 Drilling Measured From **KB**
 Other Services
 Elevation
 K.B: 4979'
 D.F: 4978'
 G.L: 4969'

Date	March 31, 2023
Run Number	One
Depth Driller	7998'
Depth Logger	1300'
Bottom Logged Interval	1300'
Top Log Interval	Surface
Casing Size	4 1/2
Type Fluid	Water
Density / Viscosity	NA
Max. Recorded Temp.	NA
Estimated Cement Top	---
Time Well Ready	12:00pm
Time Logger on Bottom	12:15pm
Equipment Number	200099
Location	CR 39 & 28
Recorded By	Adam Frank
Witnessed By	Nate Windholz

Borehole Record			Tubing Record				
Run Number	Bit	From	To	Size	Weight	From	To

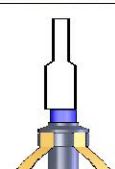
Casing Record	Size	Mgt/Ft	Top	Bottom
Surface String	8 5/8	24#	Surface	232'
Prot. String				
Production String	4 1/2	10.5#	Surface	7998'
Liner				

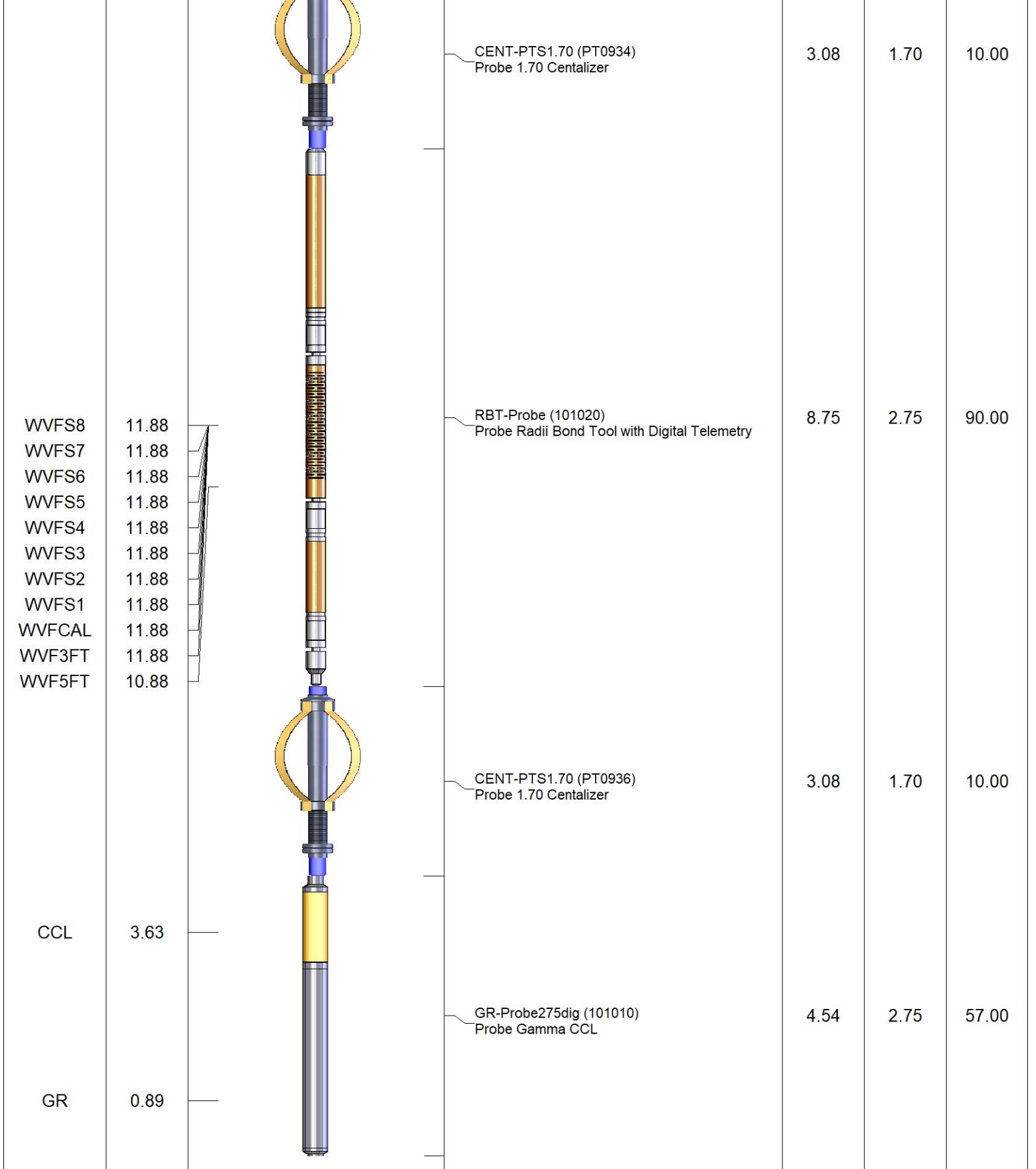
<<< Fold Here >>>

All interpretations are opinions based on inferences from electrical or other measurements and we cannot and do not guarantee the accuracy or correctness of any interpretation, and we shall not, except in the case of gross or willful negligence on our part, be liable or responsible for any loss, costs, damages, or expenses incurred or sustained by anyone resulting from any interpretation made by any of our officers, agents or employees. These interpretations are also subject to our general terms and conditions set out in our current Price Schedule.

Comments

Thank you for using NexTier Wireline!
 Log Not Correlated
 Log ran with 10' KB, and under 0 PSI
 API# - 05-123-07745

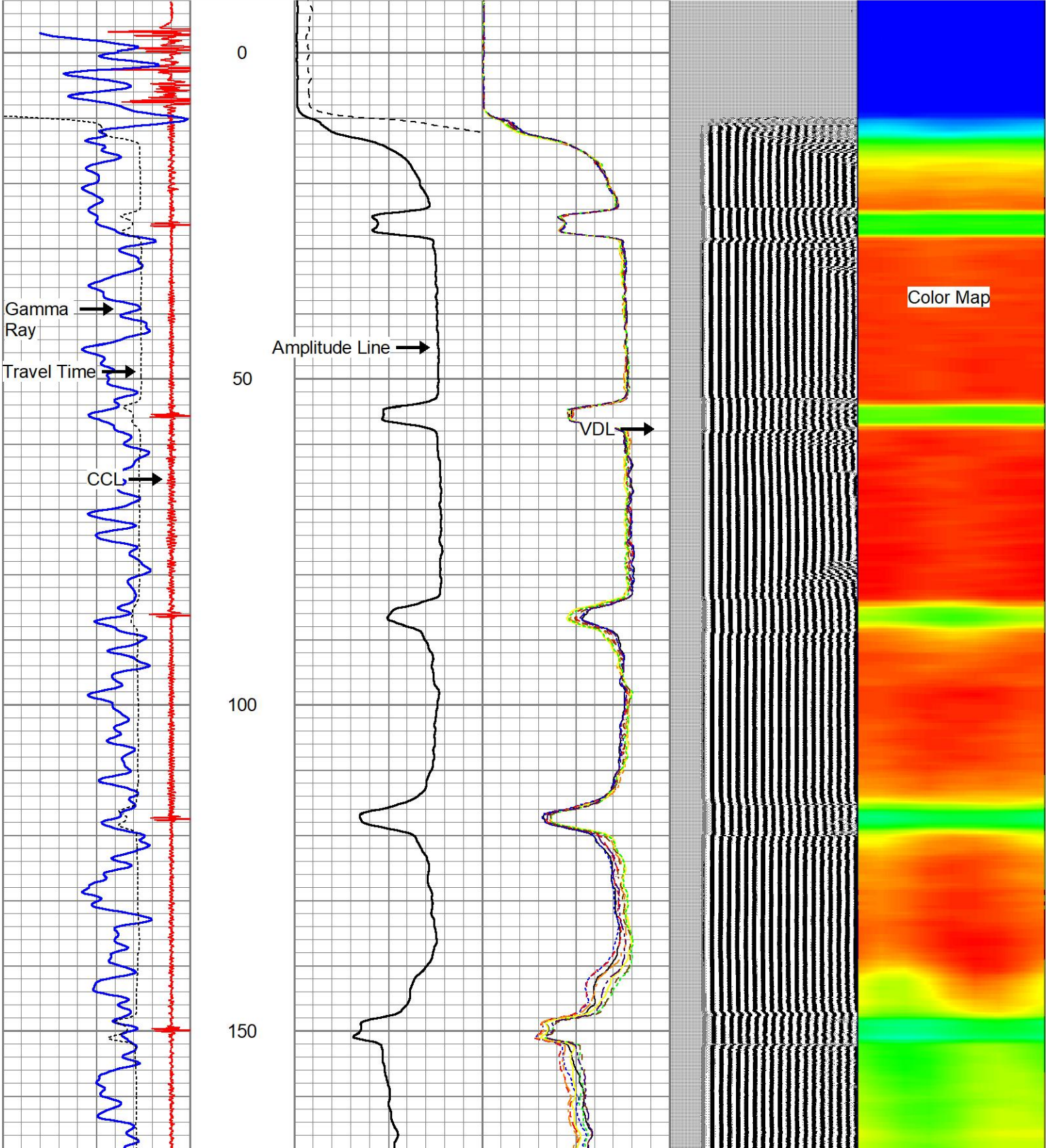
Sensor	Offset (ft)	Schematic	Description	Length (ft)	O.D. (in)	Weight (lb)
			CHD-STNDRD Standard Cable Head	1.00	1.69	10.00

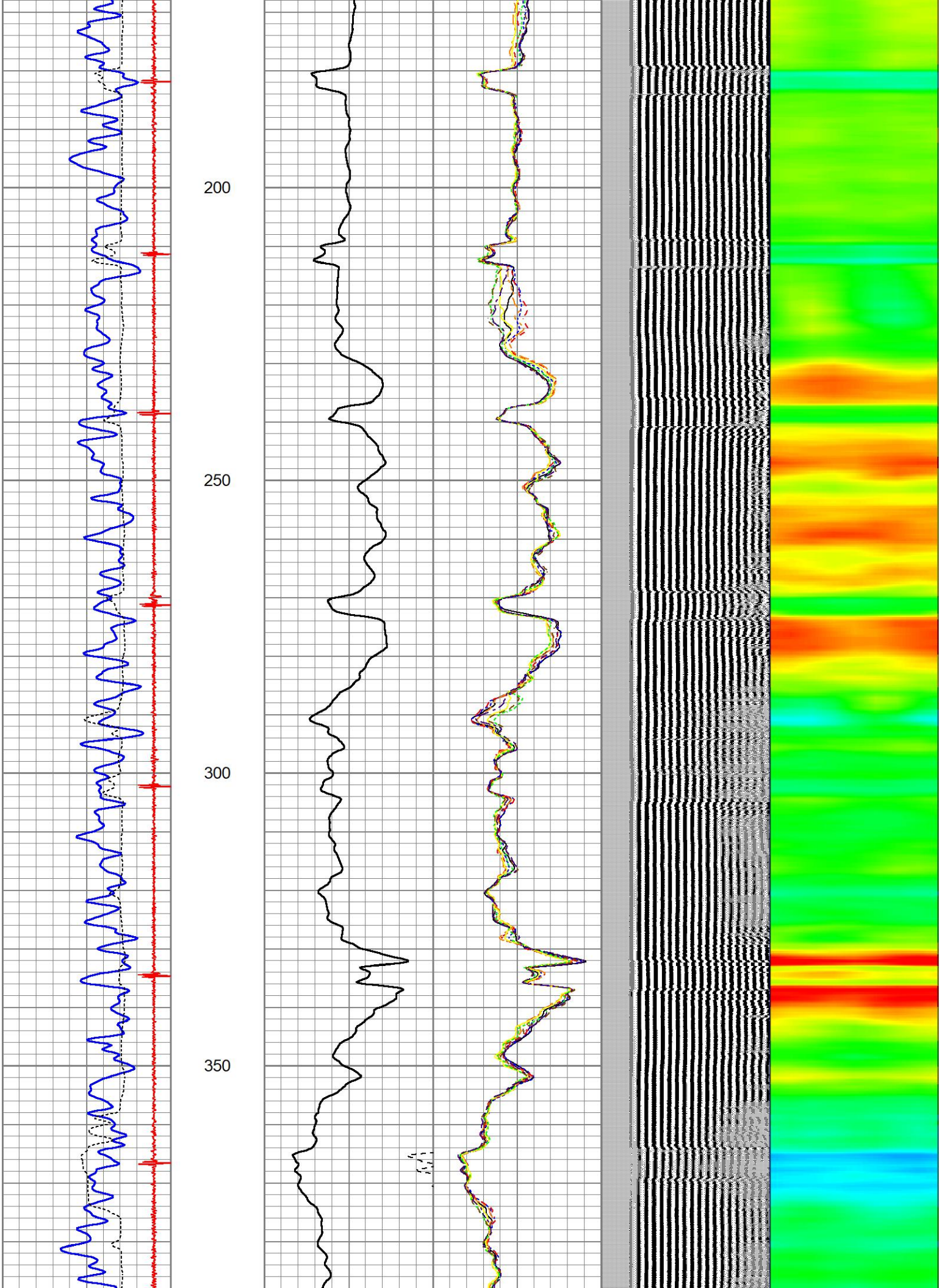


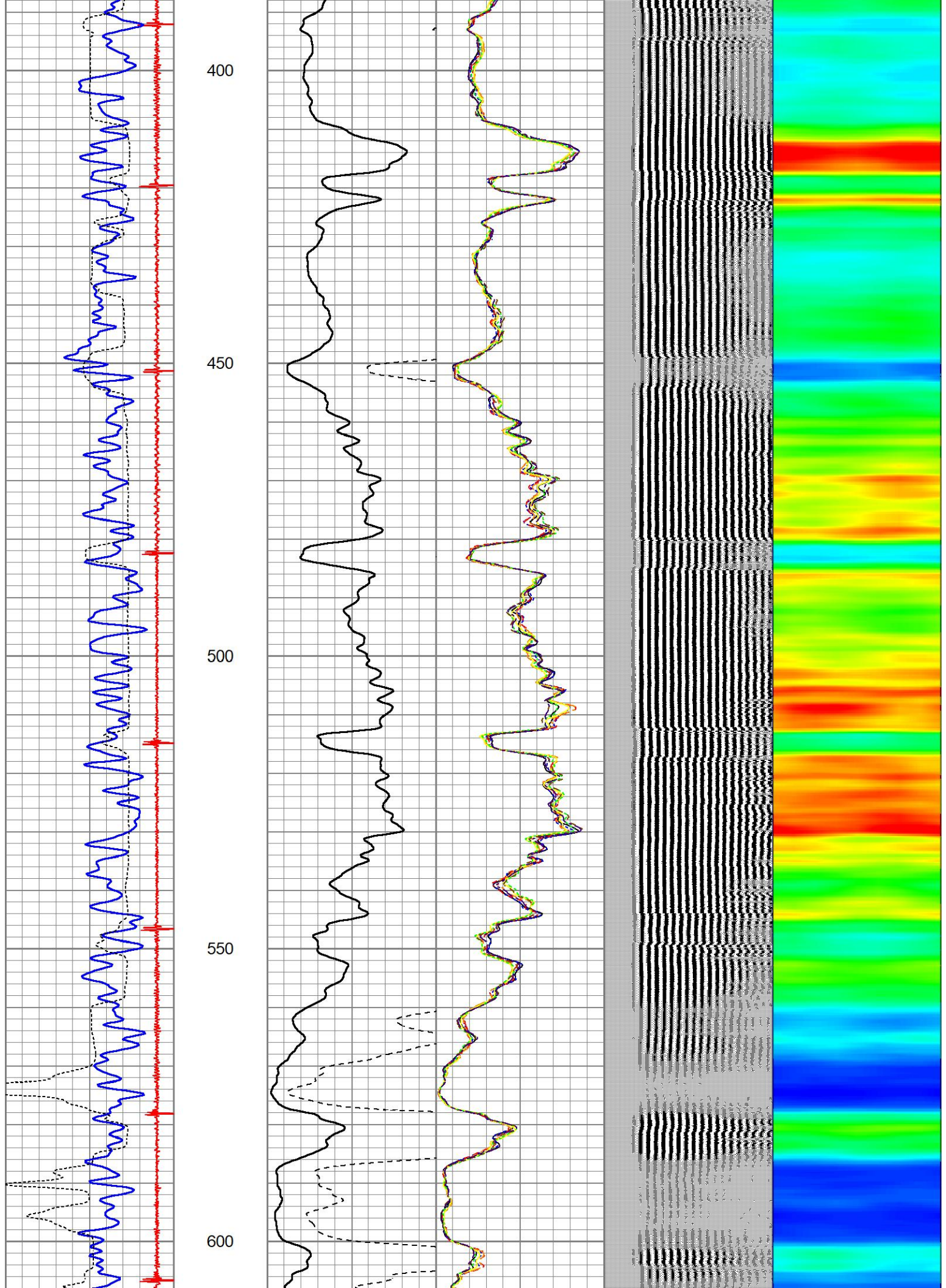
Dataset: camp lewis c b unit 1.db: field/well/run1/pass3
 Total length: 20.46 ft
 Total weight: 177.00 lb
 O.D.: 2.75 in

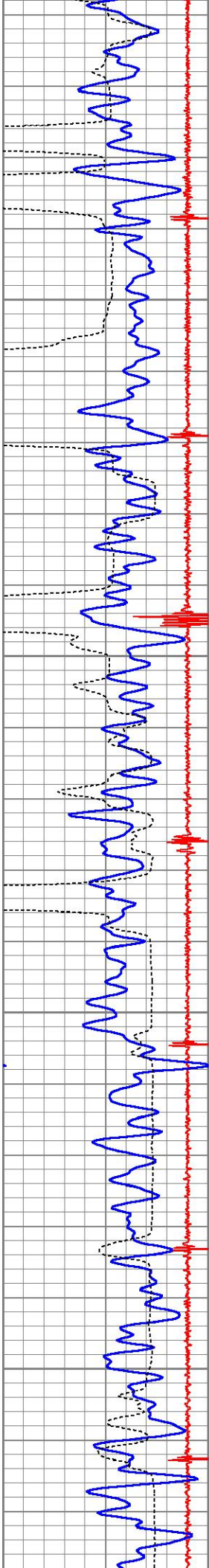
Database File: camp lewis c b unit 1.db
 Dataset Pathname: pass3
 Presentation Format: zwag (2)
 Dataset Creation: Fri Mar 31 12:48:47 2023
 Charted by: Depth in Feet scaled 1:240

9	CCL	-1	0	AMP (mV)	100	0	AMPS1	100	200	VDL (usec)	1200	1	RADIAL MAP	8
0	GR (GAPI)	150	AMPLIFIED AMP3			0	AMPS2	100						
400	TT3 (usec)	200	0	(mV)	20	0	AMPS3	100						
						0	AMPS4	100						
						0	AMPS5	100						
						0	AMPS6	100						
						0	AMPS7	100						
						0	AMPS8	100						







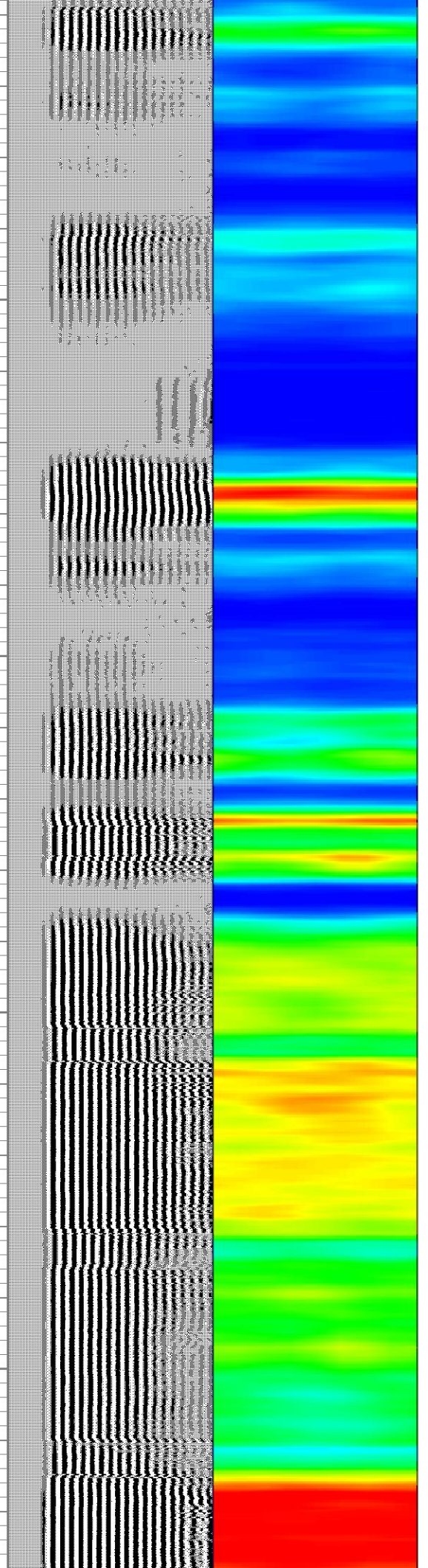
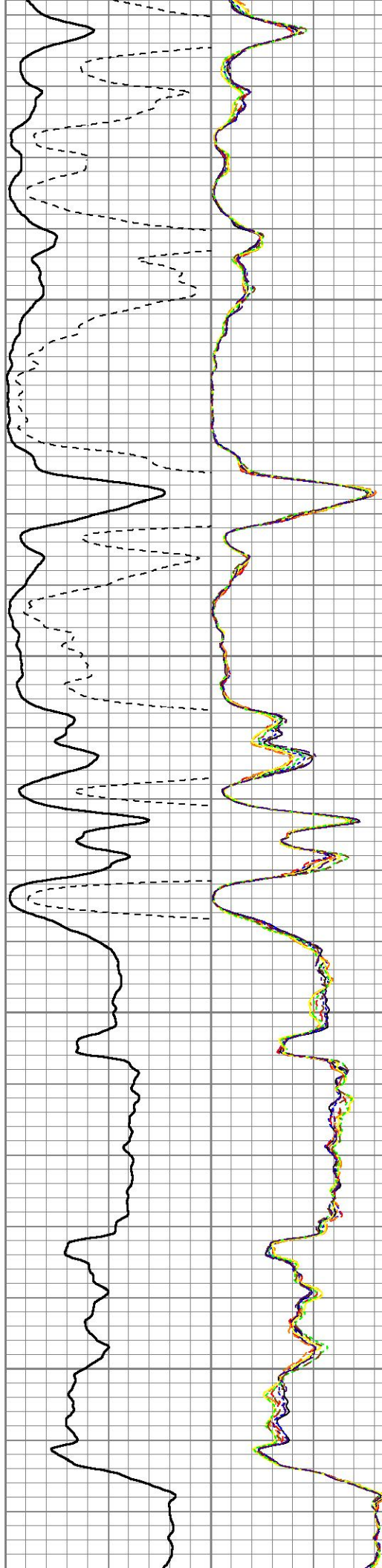


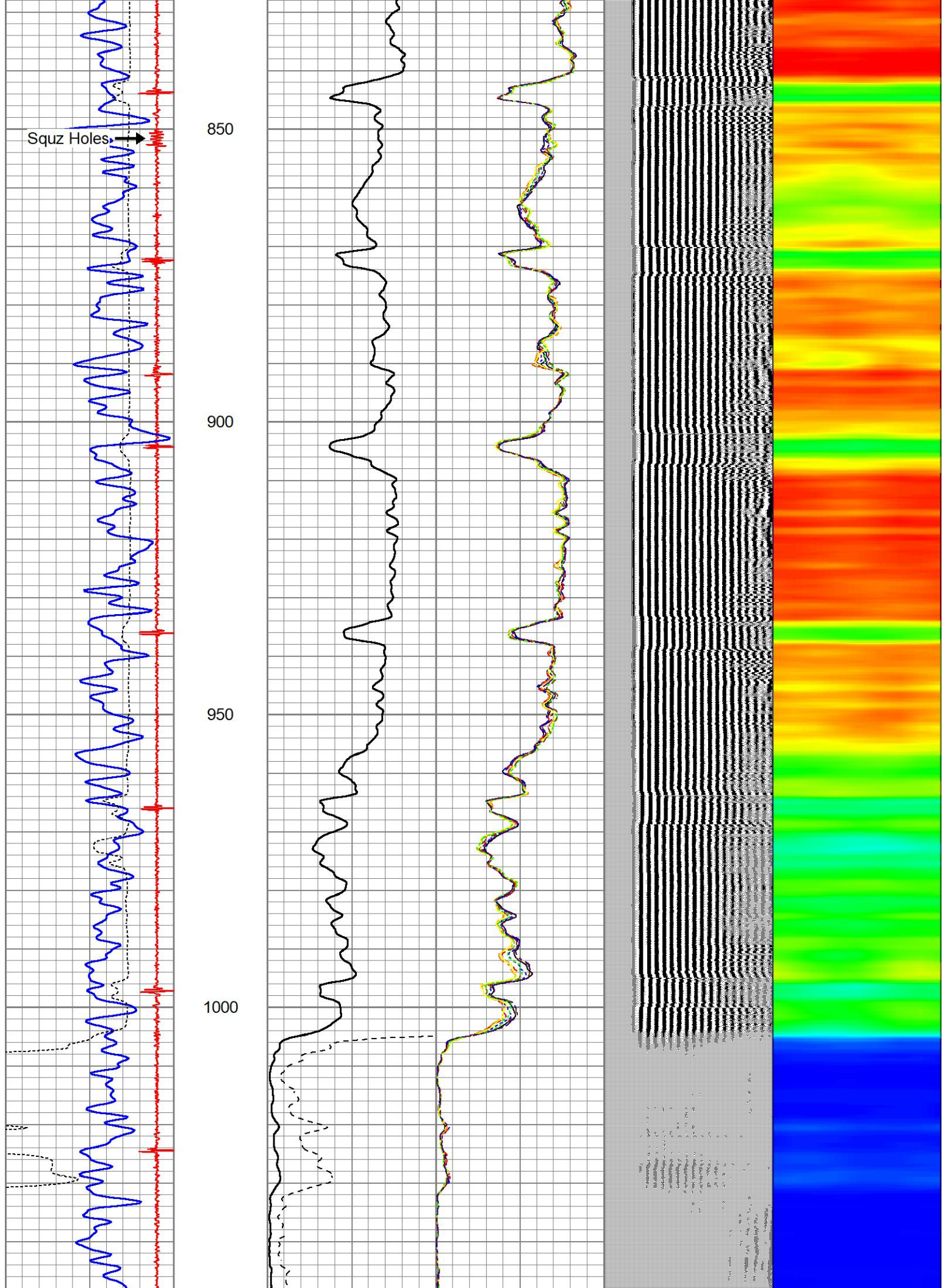
650

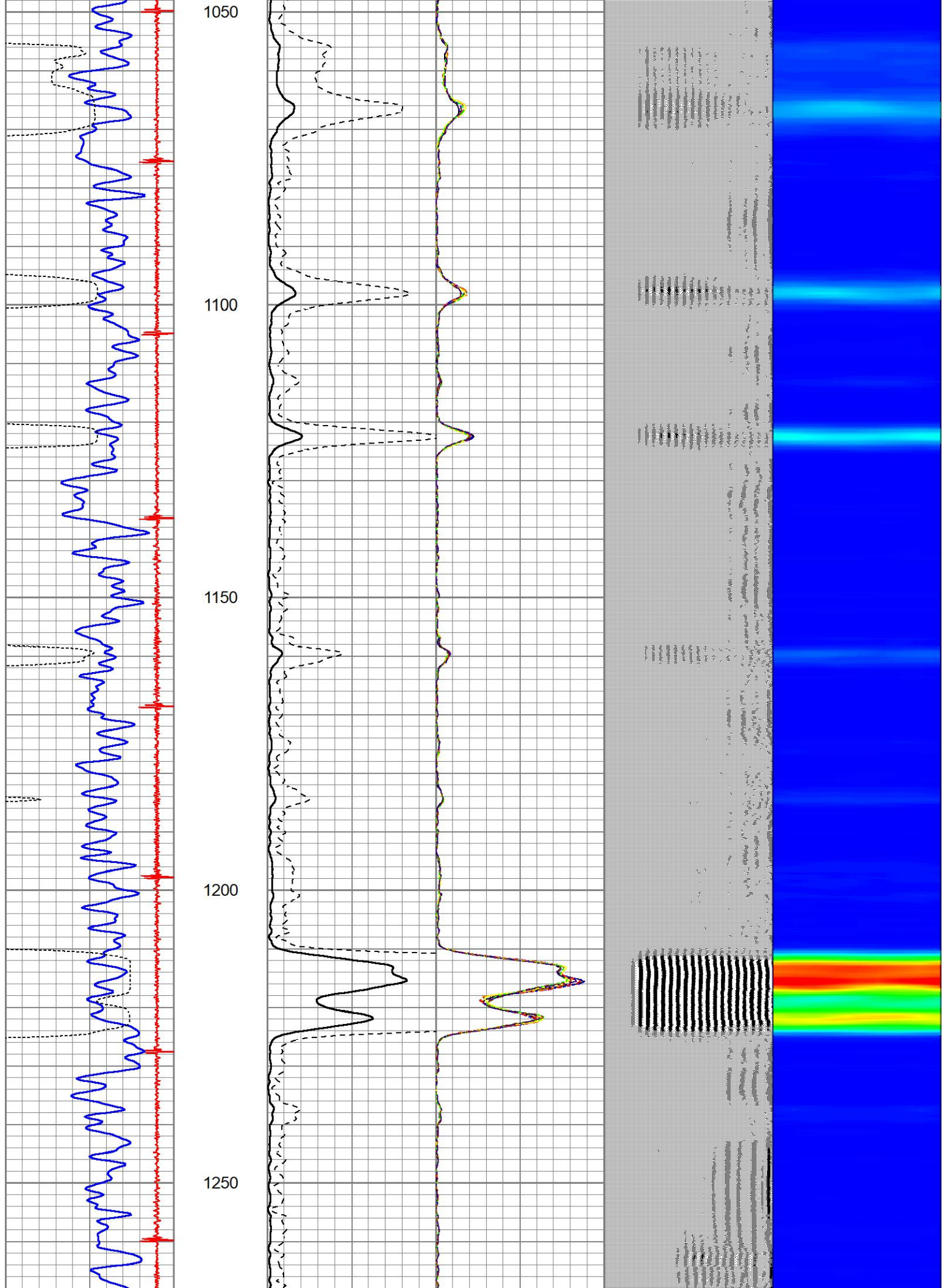
700

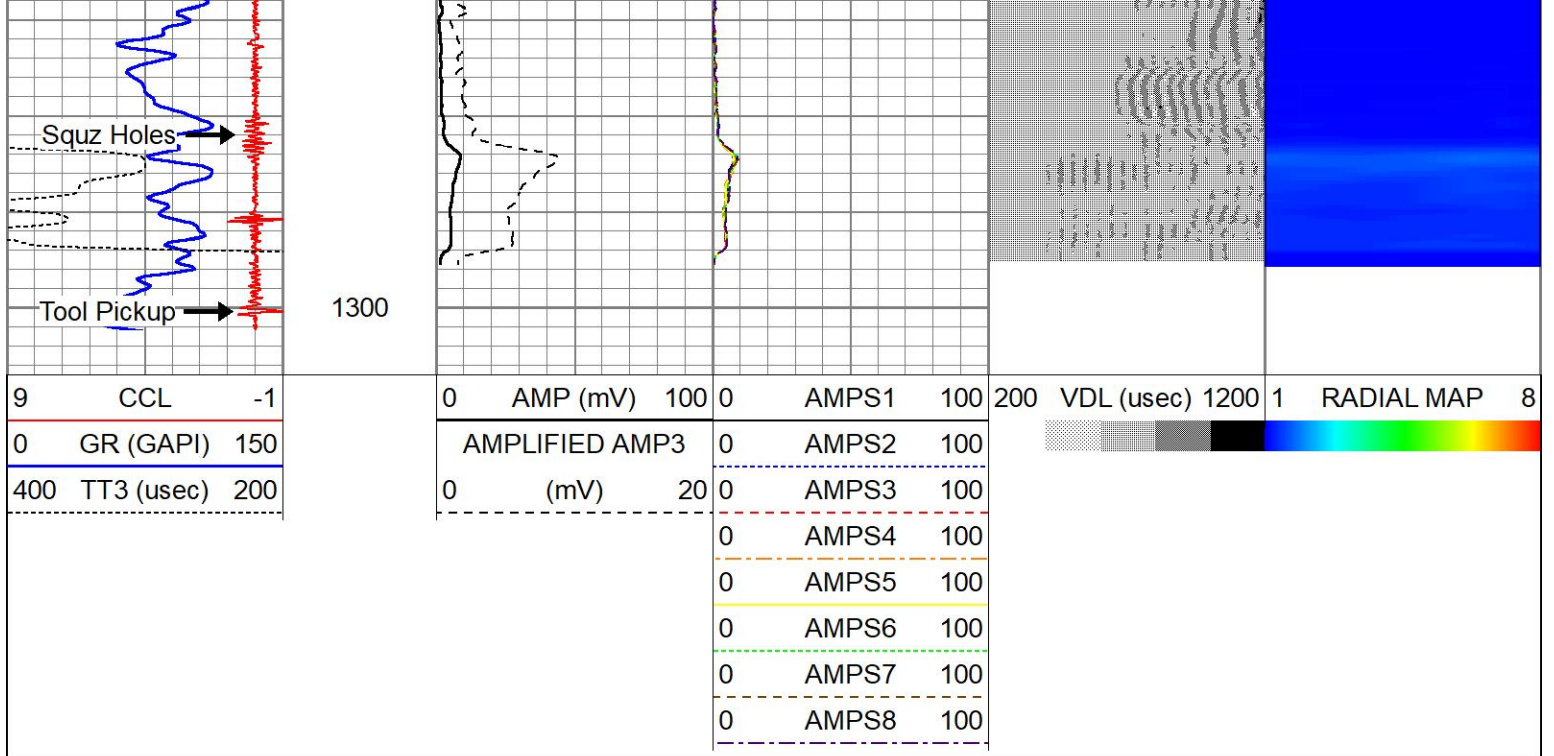
750

800









Calibration Report

Database File: camp lewis c b unit 1.db
 Dataset Pathname: pass3
 Dataset Creation: Fri Mar 31 12:48:47 2023

Gamma Ray Calibration Report

Type / Serial: Probe275dig / 101010

SHOP CALIBRATION

Thu Jan 26 13:59:04 2023

Background	Counts/Sec.	Gain	Offset	Jig	Units
Calibrator	0.0				cps
	1.0				cps
		0.2000			GAPI/cps

PRIMARY VERIFICATION

Background	0.0				cps
Calibrator	0.0				cps
Difference				0.0	GAPI

BEFORE SURVEY VERIFICATION

Background	0.0				cps
Calibrator	0.0				cps
Difference				0.0	GAPI

AFTER SURVEY VERIFICATION

Background	0.0				cps
Calibrator	0.0				cps
Difference				0.0	GAPI

Segmented Cement Bond Log Calibration Report

Serial Number:	101020	
Tool Model:	Probe	
Calibration Casing Diameter:	4.500	in
Calibration Depth:	839.017	ft

Master Calibration, performed Fri Mar 31 12:44:56 2023:

	Raw (v)		Calibrated (mv)		Results	
	Zero	Cal	Zero	Cal	Gain	Offset
3'	-0.007	0.935	1.000	81.196	85.132	1.562
CAL	-0.007	1.199				
5'	-0.007	0.783	1.000	81.196	101.556	1.668
SUM						
S1	-0.006	0.869	0.000	81.500	93.091	0.602
S2	-0.007	0.869	0.000	81.500	93.118	0.618
S3	-0.006	0.896	0.000	81.500	90.346	0.582
S4	-0.007	0.948	0.000	81.500	85.352	0.557
S5	-0.007	1.017	0.000	81.500	79.604	0.527
S6	-0.007	1.010	0.000	81.500	80.150	0.525
S7	-0.007	0.962	0.000	81.500	84.179	0.556
S8	-0.007	0.909	0.000	81.500	89.023	0.596

Internal Reference Calibration, performed Tue Feb 12 12:45:01 2013:

	Raw (v)		Calibrated (v)		Results	
	Zero	Cal	Zero	Cal	Gain	Offset
CAL	0.000	0.000	-0.007	1.199	1.000	0.000

Air Zero Calibration, performed Thu Feb 21 13:40:31 2013:

	Raw (v)		Calibrated (v)		Results	
	Zero		Zero		Offset	
3'	0.000		0.000		0.000	
5'	0.000		0.000		0.000	
SUM						
S1	0.000		0.000		0.000	
S2	0.000		0.000		0.000	
S3	0.000		0.000		0.000	
S4	0.000		0.000		0.000	
S5	0.000		0.000		0.000	
S6	0.000		0.000		0.000	
S7	0.000		0.000		0.000	
S8	0.000		0.000		0.000	