

**RADIAL CEMENT BOND
GAMMA RAY C.C.L.V.D.L.
LOG**

Company **OCCIDENTAL PETROLEUM INC.**
 Well **CAMP LEWIS C B UNIT 1**
 Field **WATTENBERG**
 County **WELD** State **COLORADO**

Location **SW/SW**
API# 05-123-07745
 Permanent Datum **GROUND LEVEL** Elevation **4969'**
 Log Measured From **KELLY BUSHING**
 Drilling Measured From **KELLY BUSHING**
 Other Services **NONE**
 Elevation **K.B. 4979'**
D.F. N/A
G.L. 4969'

Date	17 MARCH, 2023
Run Number	ONE
Depth Driller	7988'
Depth Logger	1300'
Bottom Logged Interval	1297'
Top Log Interval	SURFACE
Casing Size	4.5"
Type Fluid	WATER
Density / Viscosity	N/A
Max. Recorded Temp.	N/A
Estimated Cement Top	----
Time Well Ready	7:45 AM
Time Logger on Bottom	8:30AM
Equipment Number	200128
Location	STERLING, CO
Recorded By	ADAM GARDNER
Witnessed By	NATE WINDHOLZ

Borehole Record			Tubing Record				
Run Number	Bit	From	To	Size	Weight	From	To

Casing Record	Size	Wgt/Ft	Top	Bottom
Surface String	8.625"	24#	0'	232'
Prot. String				
Production String	4.5"	10.5#	0'	7998'
Liner	2.875"	6.5#	0'	7766'

<<< Fold Here >>>

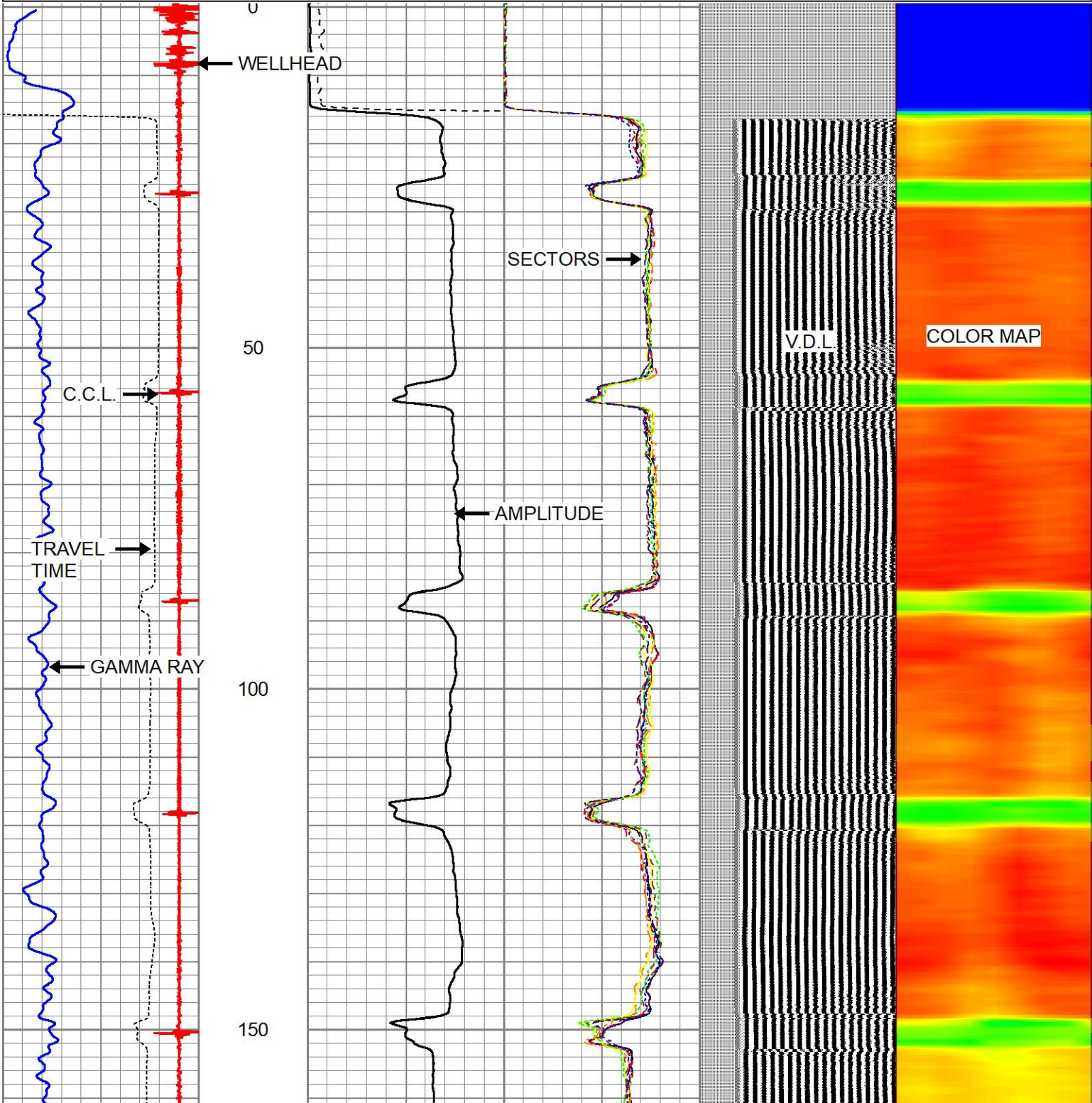
All interpretations are opinions based on inferences from electrical or other measurements and we cannot and do not guarantee the accuracy or correctness of any interpretation, and we shall not, except in the case of gross or willful negligence on our part, be liable or responsible for any loss, costs, damages, or expenses incurred or sustained by anyone resulting from any interpretation made by any of our officers, agents or employees. These interpretations are also subject to our general terms and conditions set out in our current Price Schedule.

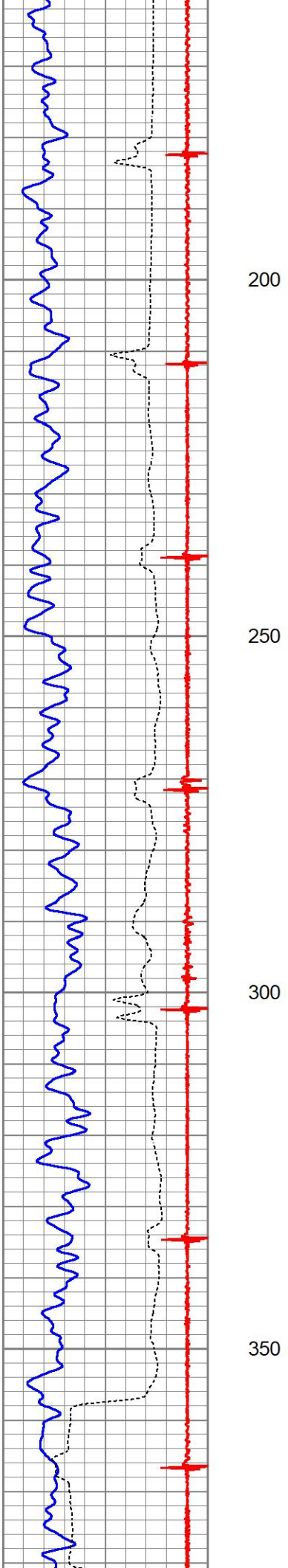
Comments

LOG CORRELATED TO LOG RAN BY NUEX WIRELINE
 LOG RAN WITH 10' K.B.
 LOG RAN DIRECTLY AFTER LOADING HOLE WITH FLUID!

Database File camp lewis c b unit 1 rcbl.db
 Dataset Pathname pass6
 Presentation Format zwag (2)
 Dataset Creation Fri Mar 17 08:25:46 2023
 Charted by Depth in Feet scaled 1:240

50	CCL	-5.5	0	AMP (mV)	100	0	AMPS1	100	200	VDL (usec)	1200	1	RADIAL MAP	8
0	GR (GAPI)	150	AMPLIFIED AMP3			0	AMPS2	100						
340	TT3 (usec)	243	0	(mV)	20	0	AMPS3	100						
						0	AMPS4	100						
						0	AMPS5	100						
						0	AMPS6	100						
						0	AMPS7	100						
						0	AMPS8	100						



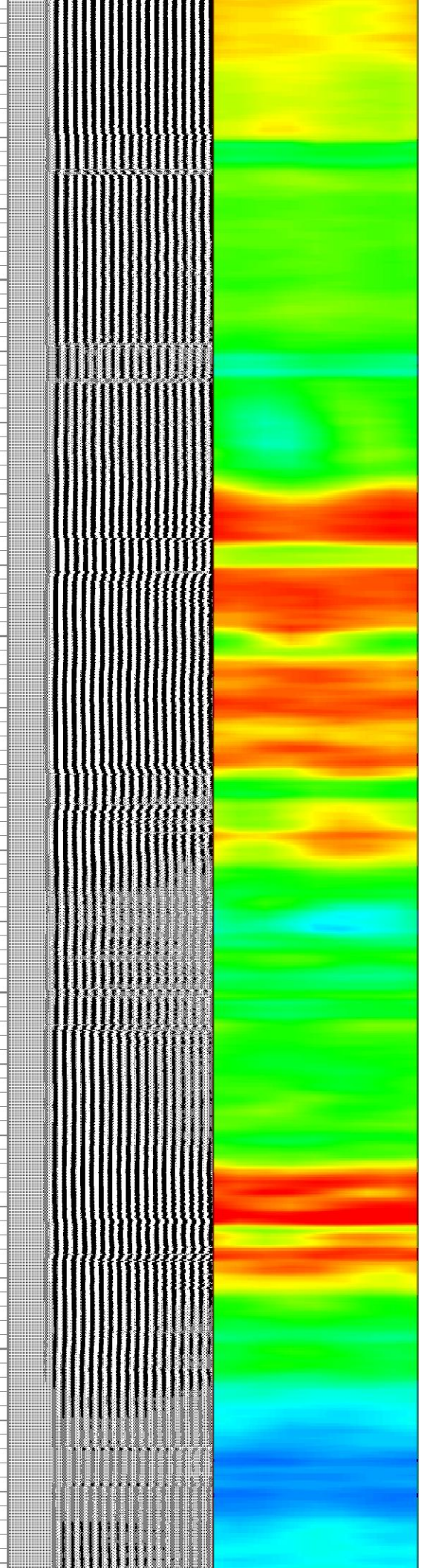
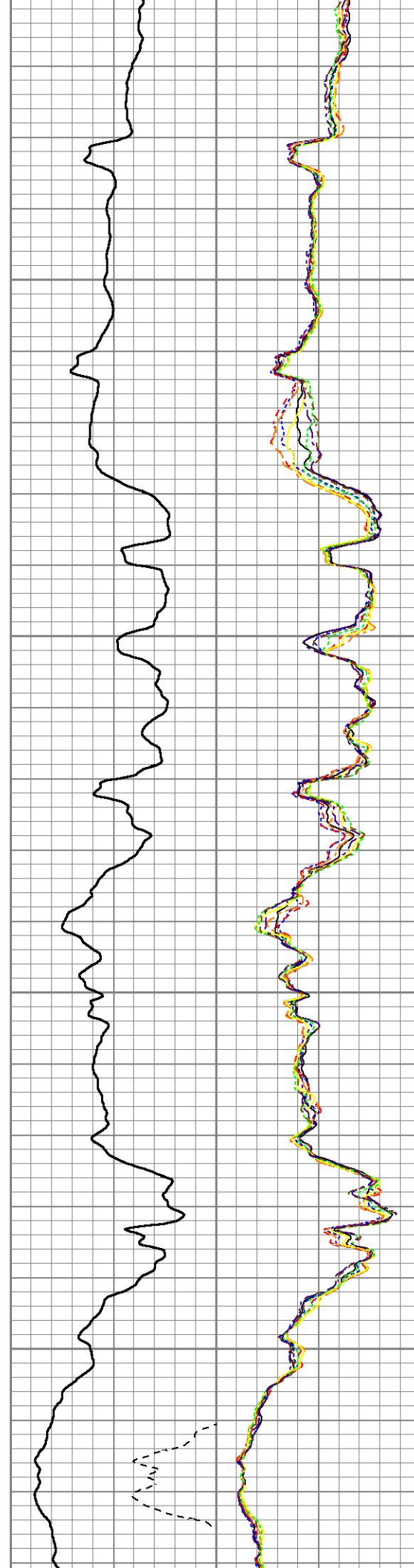


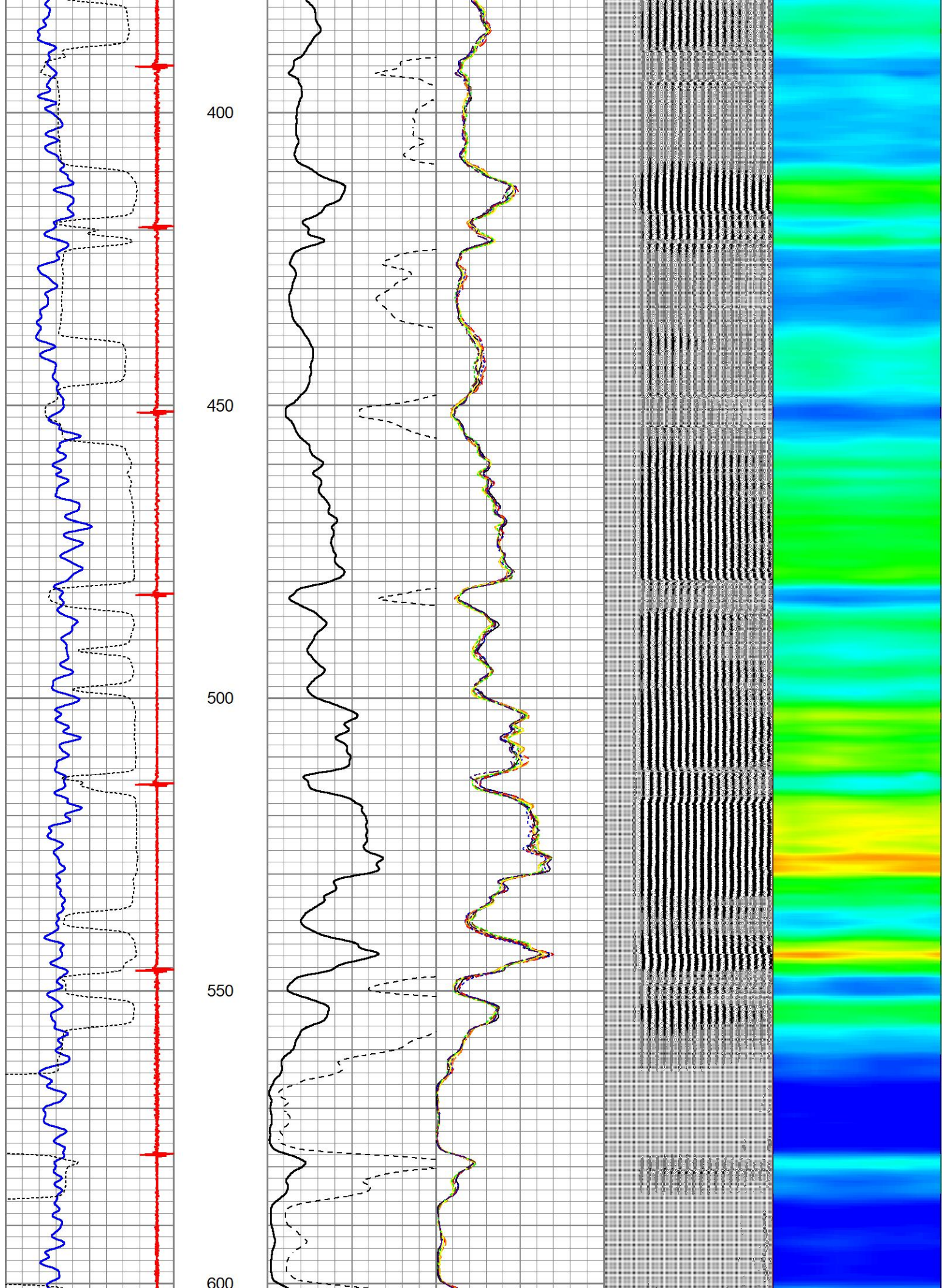
200

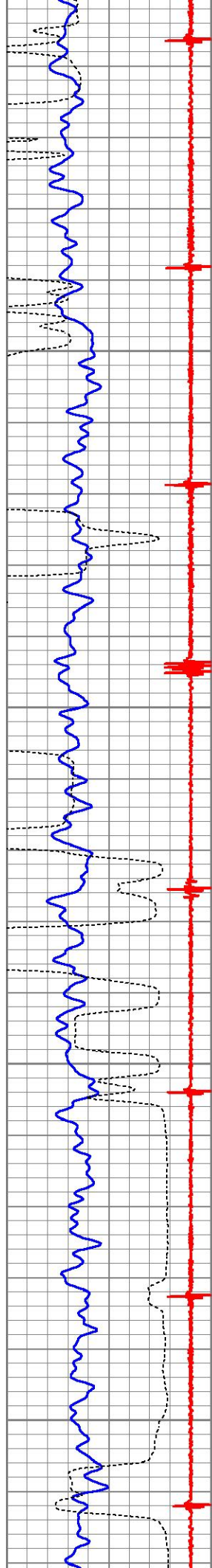
250

300

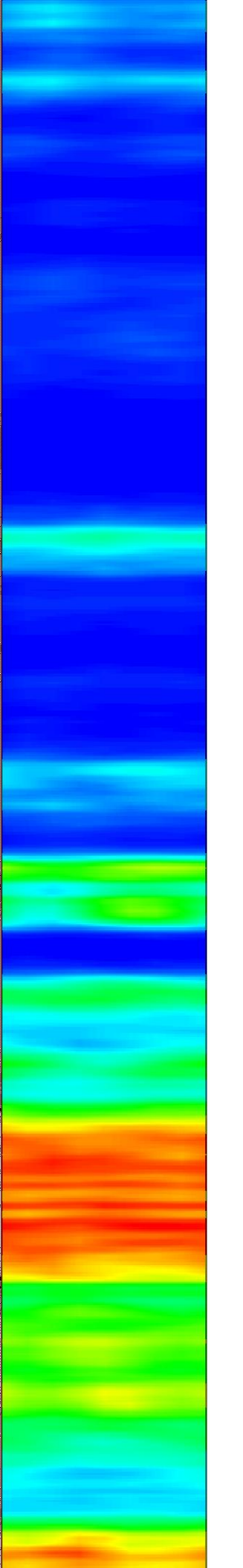
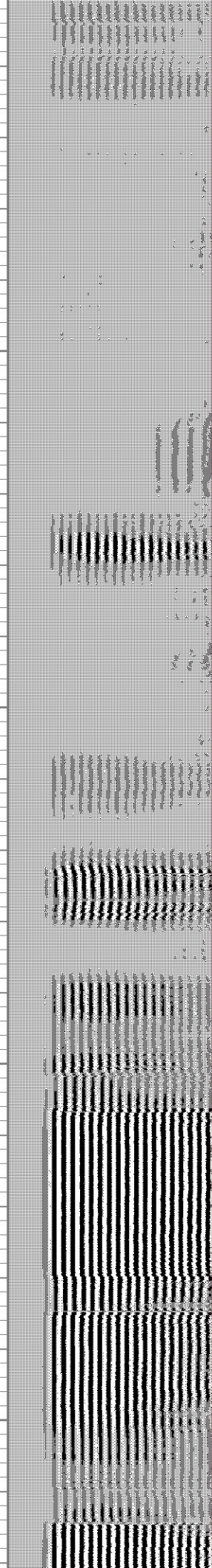
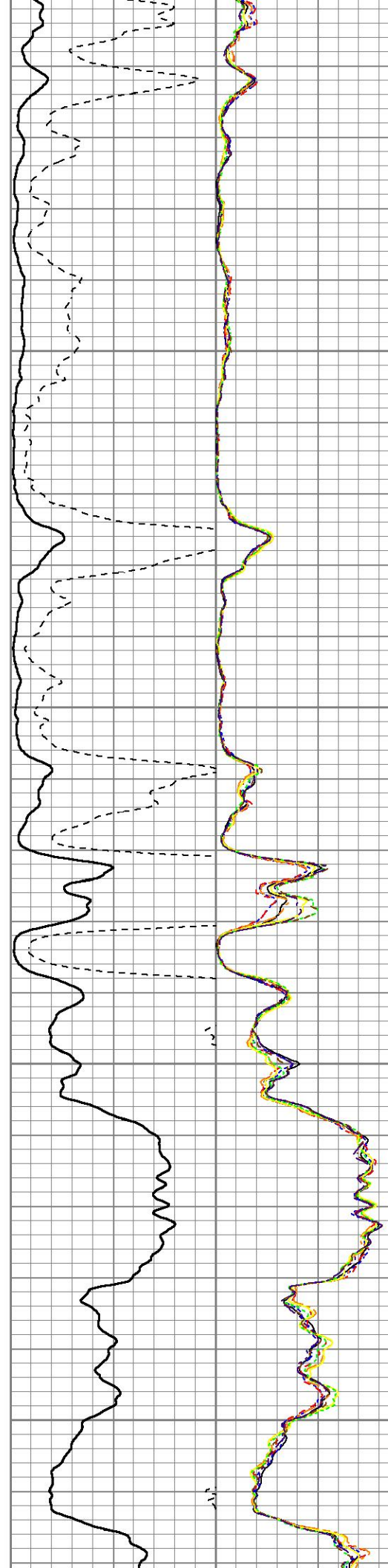
350

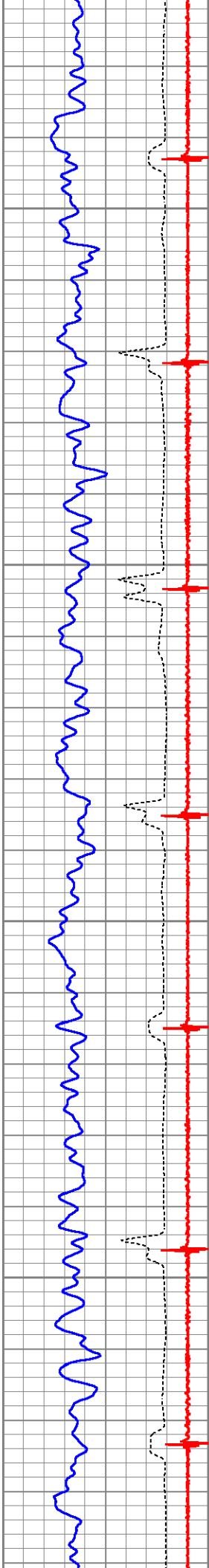






650
700
750
800



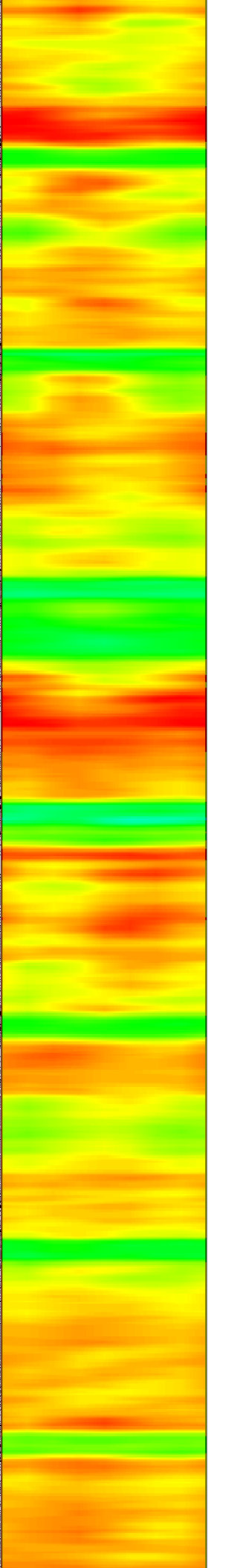
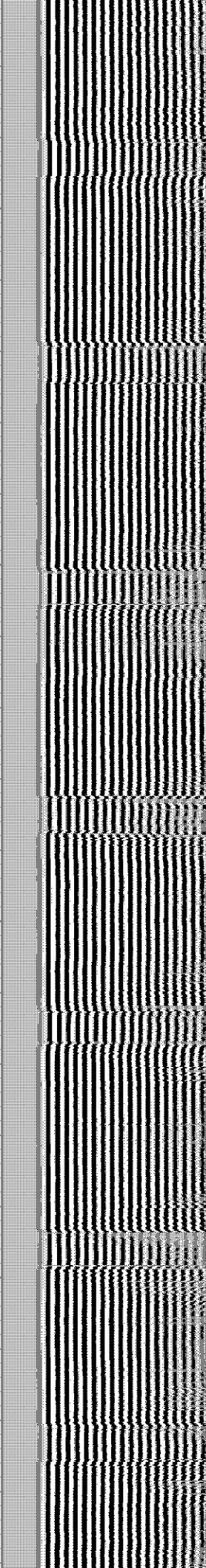
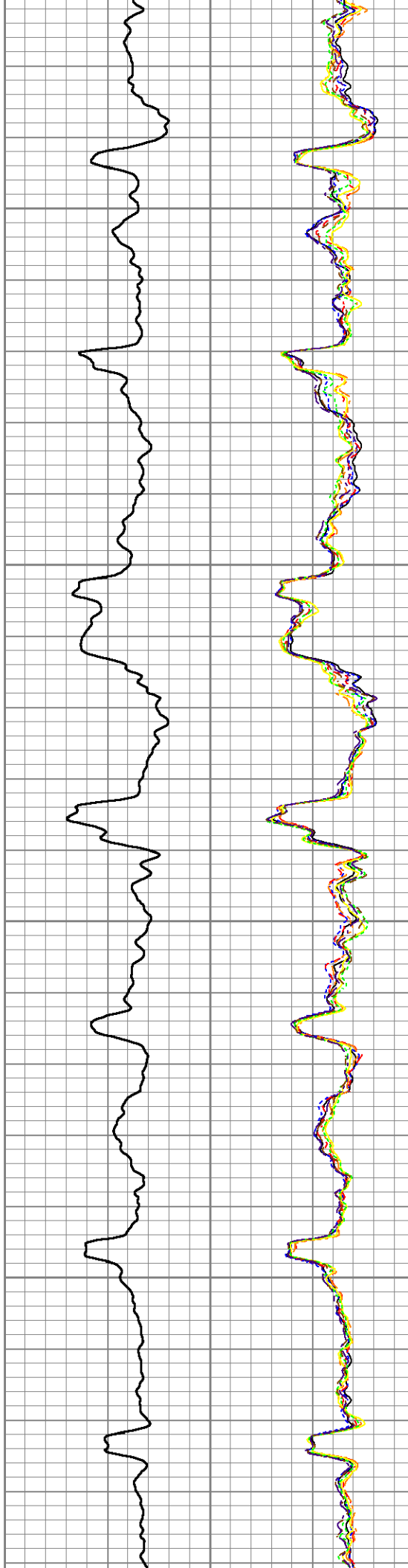


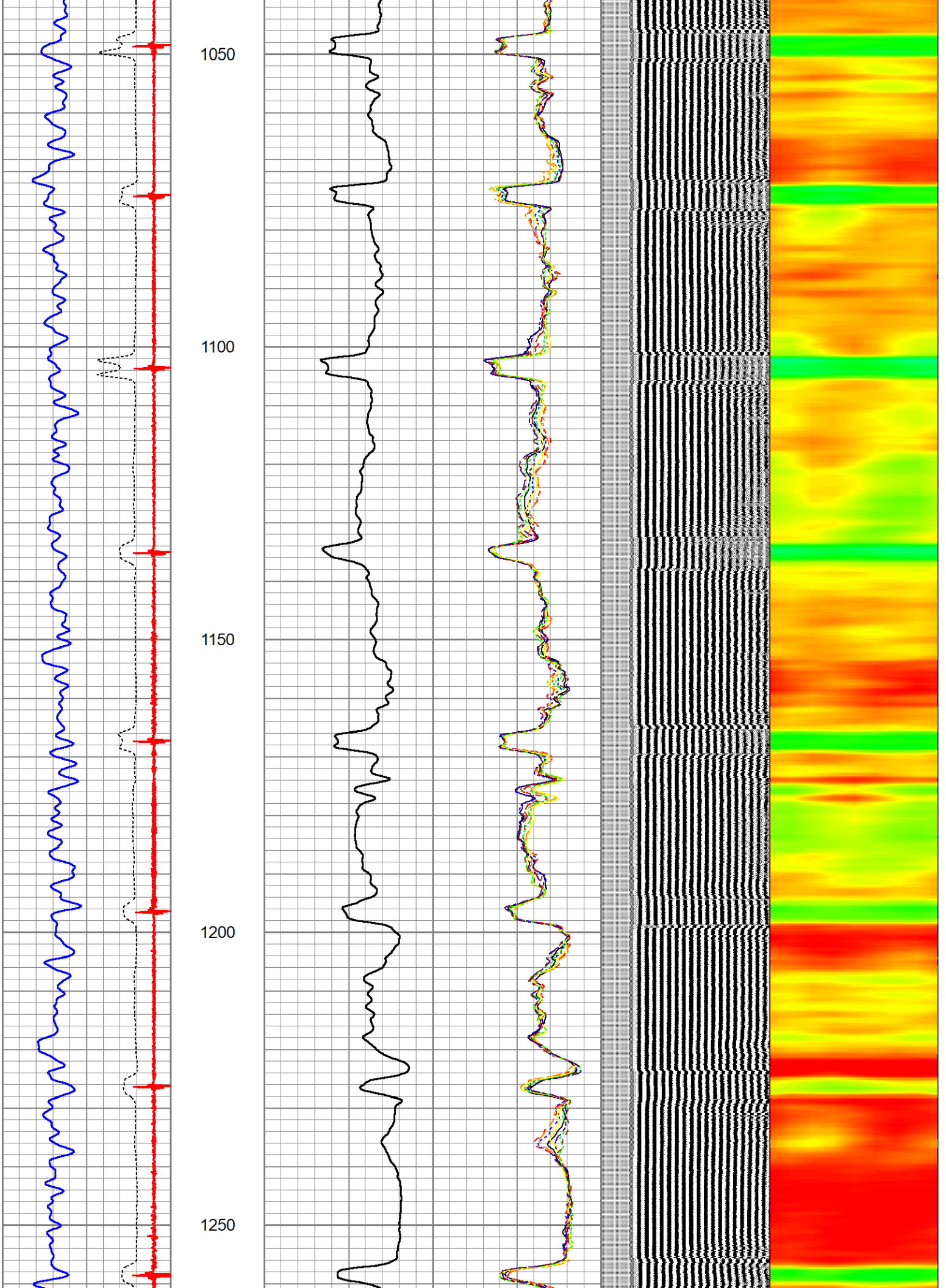
850

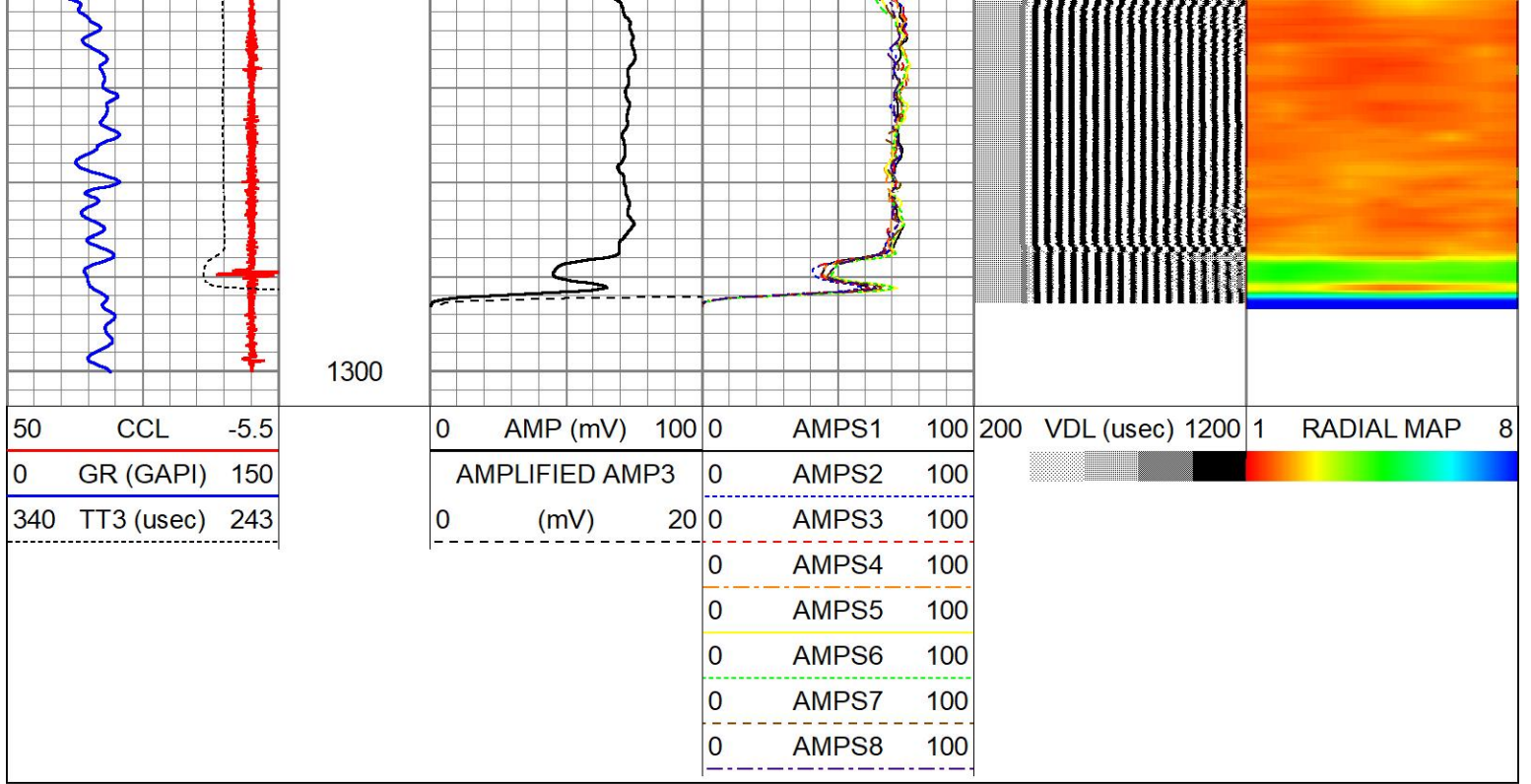
900

950

1000







Calibration Report

Database File camp lewis c b unit 1 rcbl.db
 Dataset Pathname pass6
 Dataset Creation Fri Mar 17 08:25:46 2023

Gamma Ray Calibration Report

Type / Serial: Probe275dig / 101010

SHOP CALIBRATION

Wed Jul 13 11:00:34 2022

	Counts/Sec.	Gain	Offset	Jig	Units
Background	0.0				cps
Calibrator	1.0				cps
		0.4000			GAPI/cps

PRIMARY VERIFICATION

Background	0.0				cps
Calibrator	0.0				cps
Difference				0.0	GAPI

BEFORE SURVEY VERIFICATION

Background	0.0				cps
Calibrator	0.0				cps
Difference				0.0	GAPI

AFTER SURVEY VERIFICATION

Background	0.0				cps
Calibrator	0.0				cps
Difference				0.0	GAPI

Segmented Cement Bond Log Calibration Report

Serial Number: 101020
 Tool Model: Probe
 Calibration Casing Diameter: 4.500 in
 Calibration Depth: 1255.275 ft

Master Calibration, performed Fri Mar 17 08:24:30 2023:

	Raw (v)		Calibrated (mv)		Results	
	Zero	Cal	Zero	Cal	Gain	Offset
3'	0.002	0.662	0.700	81.196	121.858	0.514
CAL	0.002	0.931				
5'	0.002	0.577	0.700	81.196	139.969	0.483
SUM						
S1	0.002	0.631	0.000	81.000	128.825	-0.272
S2	0.002	0.694	0.000	81.000	117.035	-0.204
S3	0.002	0.722	0.000	81.000	112.470	-0.189
S4	0.002	0.731	0.000	81.000	111.127	-0.199
S5	0.002	0.697	0.000	81.000	116.453	-0.185
S6	0.002	0.657	0.000	81.000	123.546	-0.217
S7	0.001	0.643	0.000	81.000	126.348	-0.188
S8	0.002	0.642	0.000	81.000	126.439	-0.213

Internal Reference Calibration, performed Tue Feb 12 12:45:01 2013:

	Raw (v)		Calibrated (v)		Results	
	Zero	Cal	Zero	Cal	Gain	Offset
CAL	0.000	0.000	0.002	0.931	1.000	0.000

Air Zero Calibration, performed Thu Feb 21 13:40:31 2013:

	Raw (v)	Calibrated (v)	Results
	Zero	Zero	Offset
3'	0.000	0.000	0.000
5'	0.000	0.000	0.000
SUM			
S1	0.000	0.000	0.000
S2	0.000	0.000	0.000
S3	0.000	0.000	0.000
S4	0.000	0.000	0.000
S5	0.000	0.000	0.000
S6	0.000	0.000	0.000
S7	0.000	0.000	0.000
S8	0.000	0.000	0.000

Log Variables

DatabaseC:\ProgramData\Warrior\Data\camp lewis c b unit 1 rcbl.db
Dataset field/well/run1/pass6/_vars_

Top - Bottom

BOREID in 8.626	BOTTEMP degF 100	CASEOD in 4.5	CASETHCK in 0	CASEWGHT lb/ft 10.5	MAXAMPL mV 81	MINAMPL mV 1	MINATTN db/ft 0.8
PERFS No	PPT usec 358	SRFTEMP degF 35	TDEPTH ft 0				

Variable Description

BOREID : Borehole I.D.

BOTTEMP : Bottom Hole Temperature

CASEWGHT : Casing Weight

MAXAMPL : Maximum Amplitude

PERFS : Perforation Flag

PPT : Predicted Pipe Time

CASEOD : Casing O.D.
 CASETHCK : Casing Thickness

MINAMPL : Minimum Amplitude
 MINATTN : Minimum Attenuation

SRFTEMP : Surface Temperature
 TDEPTH : Total Depth

Sensor	Offset (ft)	Schematic	Description	Length (ft)	O.D. (in)	Weight (lb)	
			CHD-STNDRD Standard Cable Head	1.00	1.69	10.00	
			CENT-PTS1.70 (PT0934) Probe 1.70 Centalizer	3.08	1.70	10.00	
WVFS8	11.88			RBT-Probe (101020) Probe Radii Bond Tool with Digital Telemetry	8.75	2.75	90.00
WVFS7	11.88						
WVFS6	11.88						
WVFS5	11.88						
WVFS4	11.88						
WVFS3	11.88						
WVFS2	11.88						
WVFS1	11.88						
WVFCAL	11.88						
WVF3FT	11.88						
WVF5FT	10.88						
			CENT-PTS1.70 (PT0936) Probe 1.70 Centalizer	3.08	1.70	10.00	
CCL	3.63						
			GR-Probe275dig (101010) Probe Gamma CCL	4.54	2.75	57.00	
GR	0.89						

Dataset:	camp lewis c b unit 1 rcbl.db: field/well/run1/pass6
Total length:	20.46 ft
Total weight:	177.00 lb
O.D.:	2.75 in