

Company: Occidental Petroleum Inc

Well: State 6-16

Field: Wattenberg

County: Weld State: Colorado

Isolation Scanner
VDL Wide
Gamma Ray - CCL

County: Weld
Field: Wattenberg
Location: SWNW Sec 16, T1N, R68W
Well: State 6-16
Company: Occidental Petroleum Inc

Location:	SWNW Sec 16, T1N, R68W	Elev.:	K.B. 5175.00 ft
	1466' FNL X 1025' FWL		G.L. 5160.00 ft
			D.F.
Permanent Datum:	Ground Level	Elev.:	5160.00 f
Log Measured From:	Kelly Bushing	15.00 ft	above Perm. Datum
Drilling Measured From:	Kelly Bushing		
API Serial No.	Section: 16	Township: 1N	Range: 68W
05-123-29114-00			

Logging Date	25-Jul-2022
Run Number	One
Depth Driller	8228.00 ft
Schlumberger Depth	8228.00 ft
Bottom Log Interval	600.00 ft
Top Log Interval	50.00 ft
Casing Fluid Type	Water
Salinity	
Density	8.4 lbm/gal
Fluid Level	8.00 ft
BIT/CASING/TUBING STRING	
Bit Size	7.88 in
From	1005.00 ft
To	8228.00 ft
Casing/Tubing Size	4.5 in
Weight	11.6 lbm/ft
Grade	N/A
From	999.00 ft
To	8218.00 ft
Max Recorded Temperatures	71 degF
Logger on Bottom	25-Jul-2022
Time	09:22:00
Unit Number	9111
Location:	Ft. Morgan
Recorded By	Ruobing Wu
Witnessed By	NA

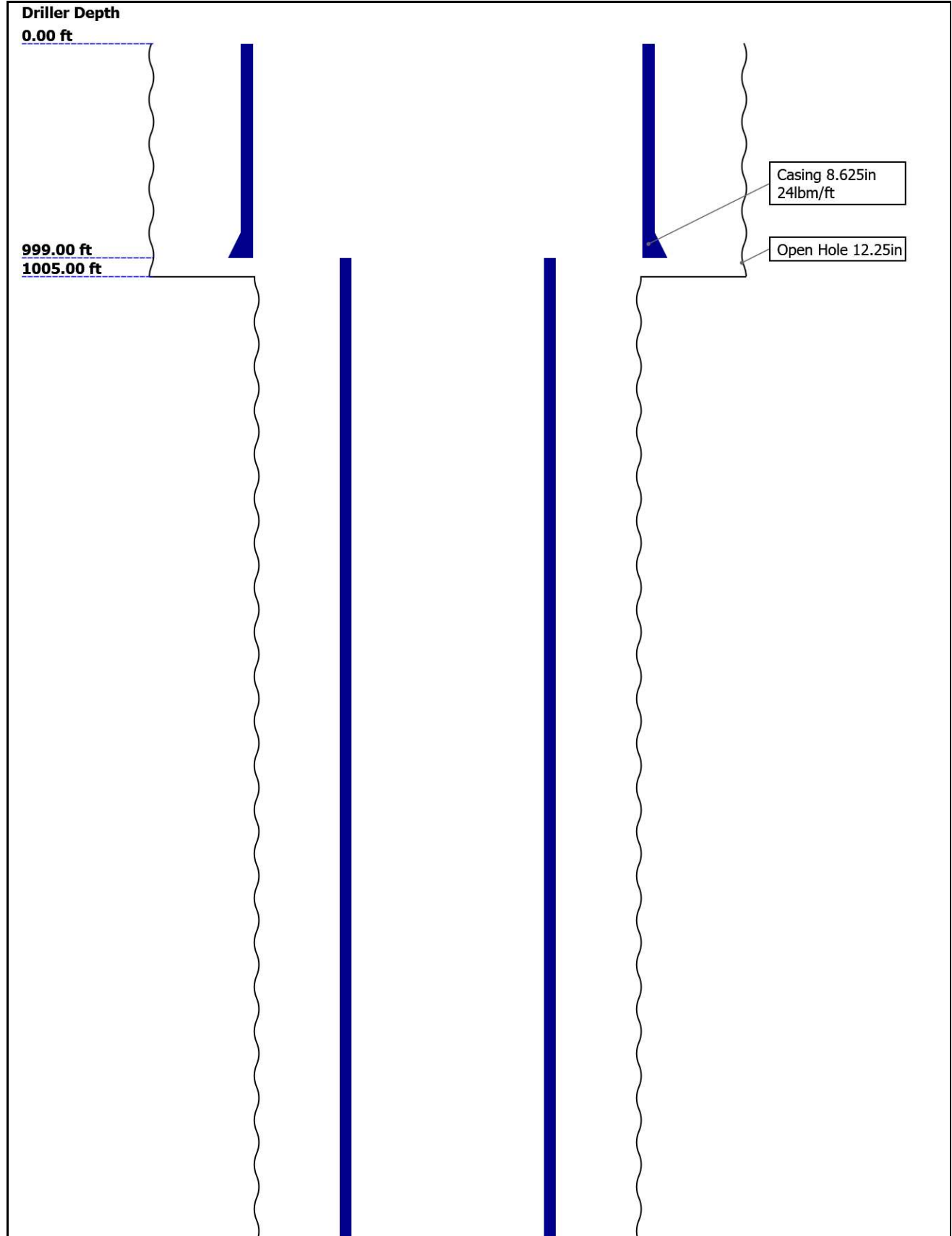
Disclaimer

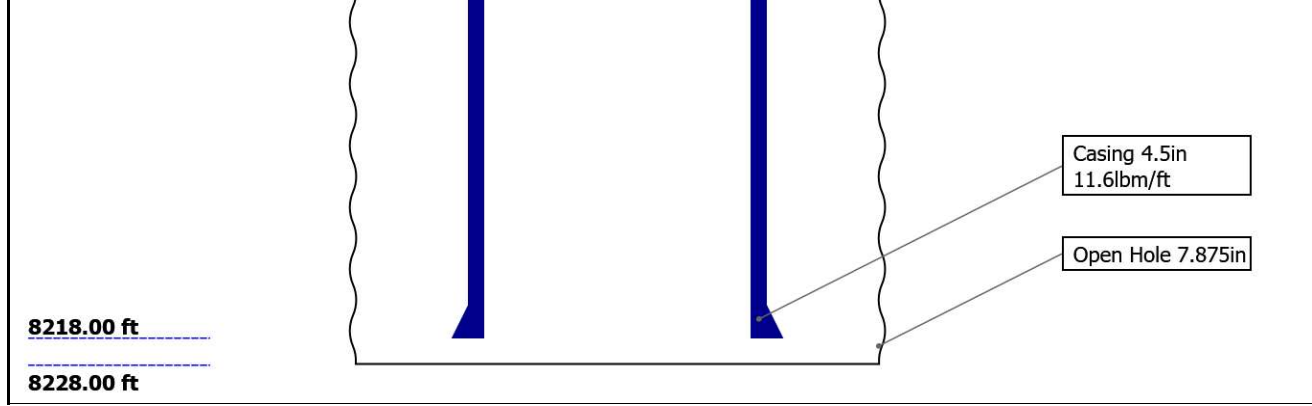
THE USE OF AND RELIANCE UPON THIS RECORDED-DATA BY THE HEREIN NAMED COMPANY (AND ANY OF ITS AFFILIATES, PARTNERS, REPRESENTATIVES, AGENTS, CONSULTANTS AND EMPLOYEES) IS SUBJECT TO THE TERMS AND CONDITIONS AGREED UPON BETWEEN SCHLUMBERGER AND THE COMPANY, INCLUDING: (a) RESTRICTIONS ON USE OF THE RECORDED-DATA; (b) DISCLAIMERS AND WAIVERS OF WARRANTIES AND REPRESENTATIONS REGARDING COMPANY'S USE AND RELIANCE UPON THE RECORDED-DATA; AND (c) CUSTOMER'S FULL AND SOLE RESPONSIBILITY FOR ANY INFERENCE DRAWN OR DECISION MADE IN CONNECTION WITH THE USE OF THIS RECORDED-DATA.

Contents

1. Header
2. Disclaimer
3. Contents
4. Well Sketch
5. Borehole Size/Casing/Tubing Record
6. Remarks and Equipment Summary
7. Depth Summary
8. IBC Fluid Properties Measurement
9. One IBC VDL WIDE
 - 9.1 Integration Summary
 - 9.2 Composite Summary
 - 9.3 Log (IBC VDL WIDE)
10. One IBC VDL Wide
 - 10.1 Integration Summary
 - 10.2 Composite Summary
 - 10.3 Log (IBC VDL WIDE)
11. Tail

Well Sketch





Borehole Size/Casing/Tubing Record

Bit					
Bit Size (in)	12.25	7.875			
Top Driller (ft)	0	1005			
Top Logger (ft)	0	1005			
Bottom Driller (ft)	1005	8228			
Bottom Logger (ft)	1005	8228			
Casing					
Size (in)	8.625	4.5			
Weight (lbm/ft)	24	11.6			
Inner Diameter (in)	8.097	4			
Grade	N/A	N/A			
Top Driller (ft)	0	999			
Top Logger (ft)	0	999			
Bottom Driller (ft)	999	8218			
Bottom Logger (ft)	999	8218			

Remarks and Equipment Summary

One: Toolstring

One: Remarks

Equip name Length
LEH-QT 48.75
 LEH-QT

MP name Offset



EDTC-B:8 45.26
 350
 EDTH-B
 EDTG-A
 EDTC-B:83
 50

CTEM 41.76
 ACCZ 0.00
 HV 0.00
 Gamma Ray 39.89
 TelStatu s 38.76

CAL-YA:1 38.76
 228
 CAL-YA:12
 28

CCL 37.97

ASLT-B:8 35.26
 073
 ASLT-BB:8
 073

Tool was run as per tool sketch

All logging intervals as per client request

Log ran with 700psi of surface induced pressure



AH-184[2] 20.61

AH-184[1] 18.61

USIT-E 16.61

- ECH-MFA: 1969
- USAC-A
- USIS-A:18 32
- USSC-B
- IBCS-B:75 5
- FAR-SENS OR
- IBC-TX
- NEAR-SENS OR
- IBC-TX
- USI-SENS OR
- IBC-TX
- EMITTER-SENSOR
- IBC-TX

USI Sensor Head Tension 0.87
TOOL_ZERO

Lengths are in ft
Maximum Outer Diameter = 6.250 in
Line: Sensor Location, Value: Gating Offset
All measurements are relative to TOOL_ZERO

Depth Summary

One

Depth Measuring Device

Type	IDW-B
Serial Number	
Calibration Date	
Calibrator Serial Number	
Calibration Cable Type	
Wheel Correction 1	0
Wheel Correction 2	0

Tension Device

Type	CMTD-B/A		
Serial Number			
Calibration Date			
Calibrator Serial Number			
Number of Calibration Points	0		

Logging Cable			
Type	7-46NT-XS		
Serial Number	1234		
Length	24000.00 ft		
Conveyance Type	Wireline		
Rig Type			

One:Depth Control Parameters		Depth Control Remarks
Log Sequence	First Log In the Well	Schlumberger depth control procedures followed
Rig Up Length At Surface		IDW used as primary depth control system
Rig Up Length At Bottom		Z-Chart used as secondary depth control system
Rig Up Length Correction		
Stretch Correction		
Tool Zero Check At Surface		

USIT - Fluid Properties Measurement

Run Name	Pass Name	Start Depth(ft)	Stop Depth(ft)
Run 1	Log[2]:Up	602.22	55.38

Fluid Velocity = "Automatic".
CFVL equals DFSL channel

Start Depth(ft)	Stop Depth(ft)	Start Value(us/ft)	End Value(us/ft)
-----------------	----------------	--------------------	------------------

Mud Impedance = "Theoretical".
CZMD uses theoretical results.
MUD_N_THE=1.00
DFD=1.01g/cm3(8.40lbm/gal)

Start Depth(ft)	Stop Depth(ft)	Start Value(Mrayl)	End Value(Mrayl)
-----------------	----------------	--------------------	------------------

One

IBC VDL WIDE

Pass Summary

Run Name	Pass Objective	Direction	Top	Bottom	Start	Stop	DSC Mode	Depth Shift	Include Parallel Data
One	Log[2]:Up	Up	55.38 ft	602.22 ft	25-Jul-2022 7:53:09 AM	25-Jul-2022 8:11:49 AM	ON	0.00 ft	Yes

All depths are referenced to toolstring zero

Log Company:Occidental Petroleum Inc Well:State 6-16
One: Log[2]:Up:S006

Description: USI IBC VDL WIDE Format: Log (IBC VDL WIDE) Index Scale: 2 in per 100 ft Index Unit: ft Index Type: Measured Depth Creation Date: 25-Jul-2022 09:00:25

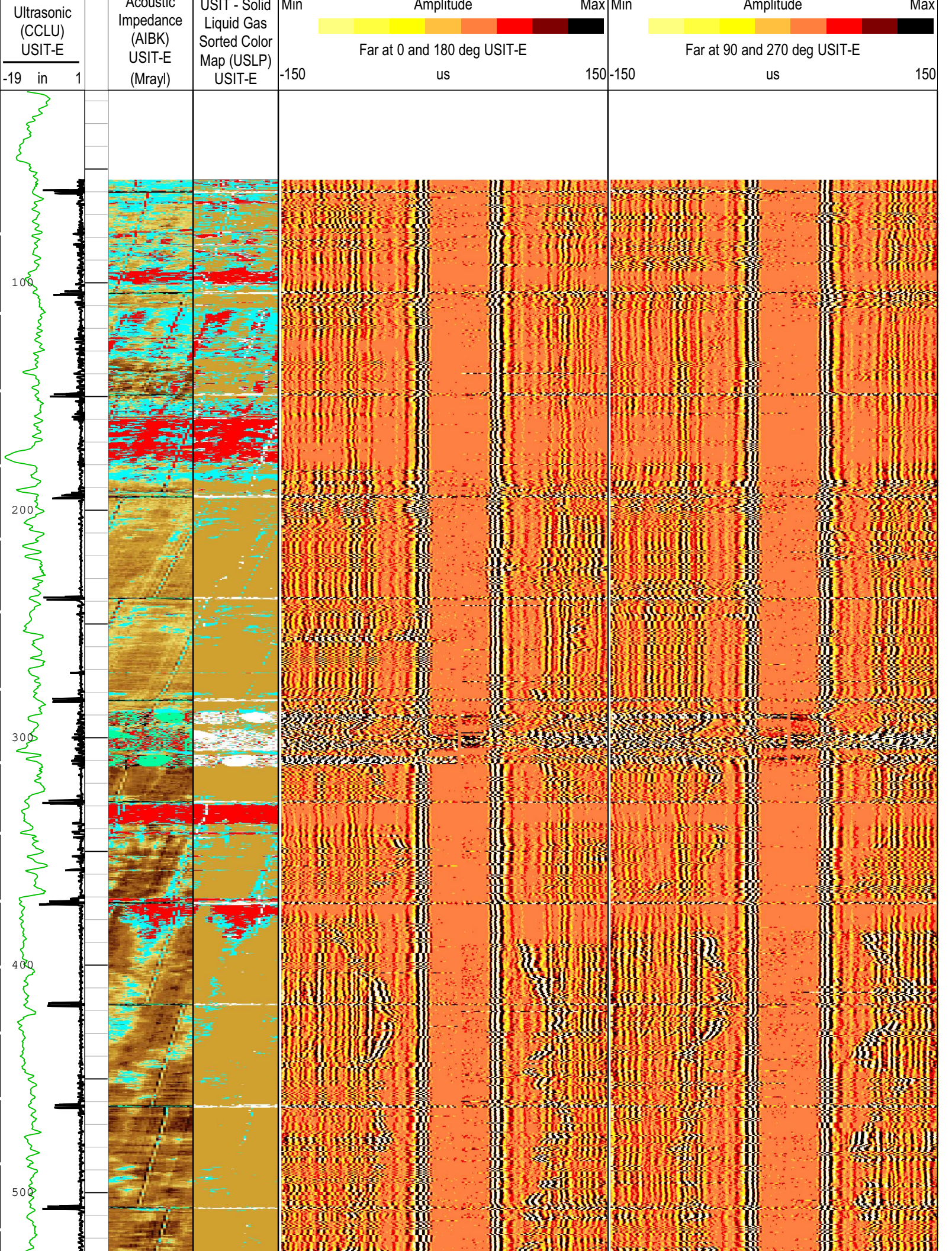
TIME_1900 - Time Marked every 60.00 (s)

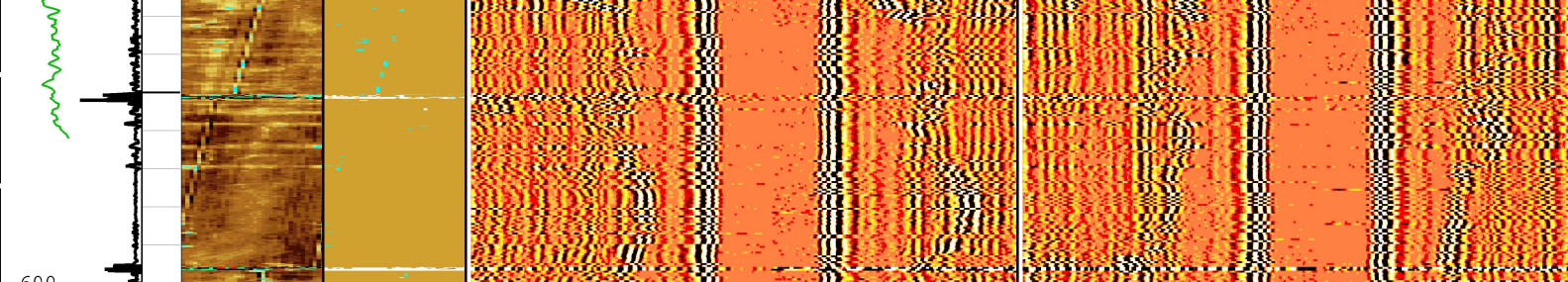
Gamma Ray (ECGR_EDT C) EDTC-B

0 gAPI 150

Casing Collar Locator

Explicit Normalization





Gamma Ray (ECGR_EDT C) EDTC-B
0 gAPI 150

Casing Collar Locator Ultrasonic (CCLU) USIT-E
-19 in 1

Custom Normalization
USIT - Acoustic Impedance (AIBK) USIT-E (Mrayl)

Explicit Normalization
USIT - Solid Liquid Gas Sorted Color Map (USLP) USIT-E

Min Amplitude Max
Far at 0 and 180 deg USIT-E
-150 us 150

Min Amplitude Max
Far at 90 and 270 deg USIT-E
-150 us 150

TIME_1900 - Time Marked every 60.00 (s)

Description: USI IBC VDL WIDE Format: Log (IBC VDL WIDE) Index Scale: 2 in per 100 ft Index Unit: ft Index Type: Measured Depth Creation Date: 25-Jul-2022 09:00:25

One

IBC VDL Wide

Pass Summary

Run Name	Pass Objective	Direction	Top	Bottom	Start	Stop	DSC Mode	Depth Shift	Include Parallel Data
One	Log[3]:Up	Up	144.02 ft	352.70 ft	25-Jul-2022 8:17:33 AM	25-Jul-2022 8:24:22 AM	ON	0.00 ft	Yes

All depths are referenced to toolstring zero

Log Company: Occidental Petroleum Inc Well: State 6-16
One: Log[3]:Up:S006

Description: USI IBC VDL WIDE Format: Log (IBC VDL WIDE) Index Scale: 2 in per 100 ft Index Unit: ft Index Type: Measured Depth Creation Date: 25-Jul-2022 09:00:27

TIME_1900 - Time Marked every 60.00 (s)

Gamma Ray (ECGR_EDT C) EDTC-B
0 gAPI 150

Annulus Thickness Minimum (UATN) USIT-E
0 ft 0.1

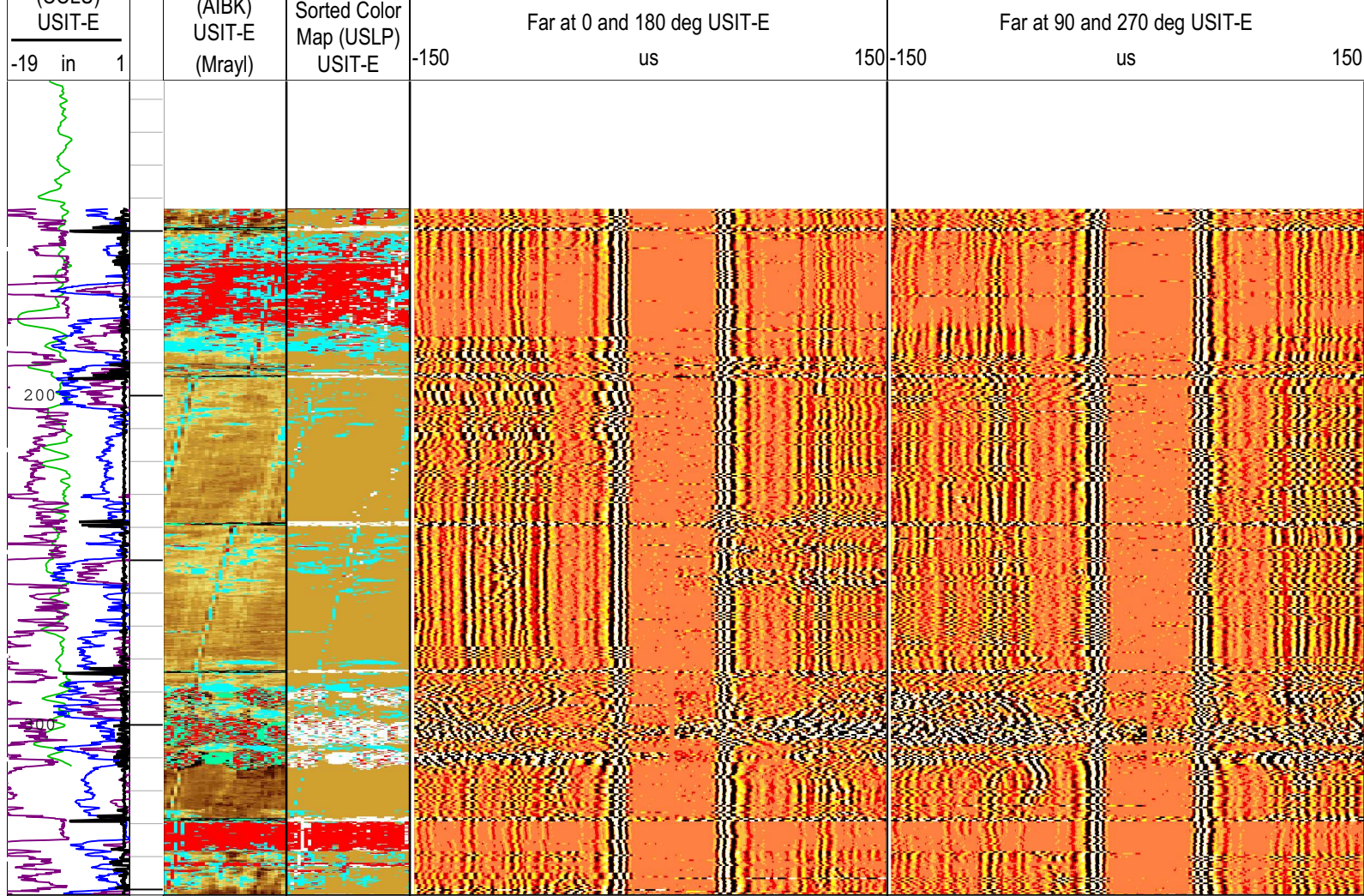
Casing Centering Percentage (U-USIT_UC CP) USIT-E
0 % 100

Casing Collar Locator Ultrasonic (CCLU)

Custom Normalization
USIT - Acoustic Impedance (AIBK) USIT-E (Mrayl)

Explicit Normalization
USIT - Solid Liquid Gas

Min Amplitude Max
Min Amplitude Max



Gamma Ray
(ECGR_EDT
C) EDTC-B
0 gAPI 150

Absent 3,090 5,054 7,018
Custom Normalization
USIT - Acoustic Impedance (AIBK) USIT-E (Mrayl)

Absent 1,500 3,500
Explicit Normalization
USIT - Solid Liquid Gas Sorted Color Map (USLP) USIT-E

Min Amplitude Max
Far at 0 and 180 deg USIT-E
-150 us 150

Min Amplitude Max
Far at 90 and 270 deg USIT-E
-150 us 150

Annulus Thickness Minimum (UATN) USIT-E
0 ft 0.1

Casing Centering Percentage (U-USIT_UC CP) USIT-E
0 % 100

Casing Collar Locator Ultrasonic (CCLU) USIT-E
-19 in 1

TIME_1900 - Time Marked every 60.00 (s)

Company: Occidental Petroleum Inc

Schlumberger

Well: State 6-16

Field: Wattenberg

County: Weld

State: Colorado

Isolation Scanner

Isolation Scanner

VDL Wide

Gamma Ray - CCL