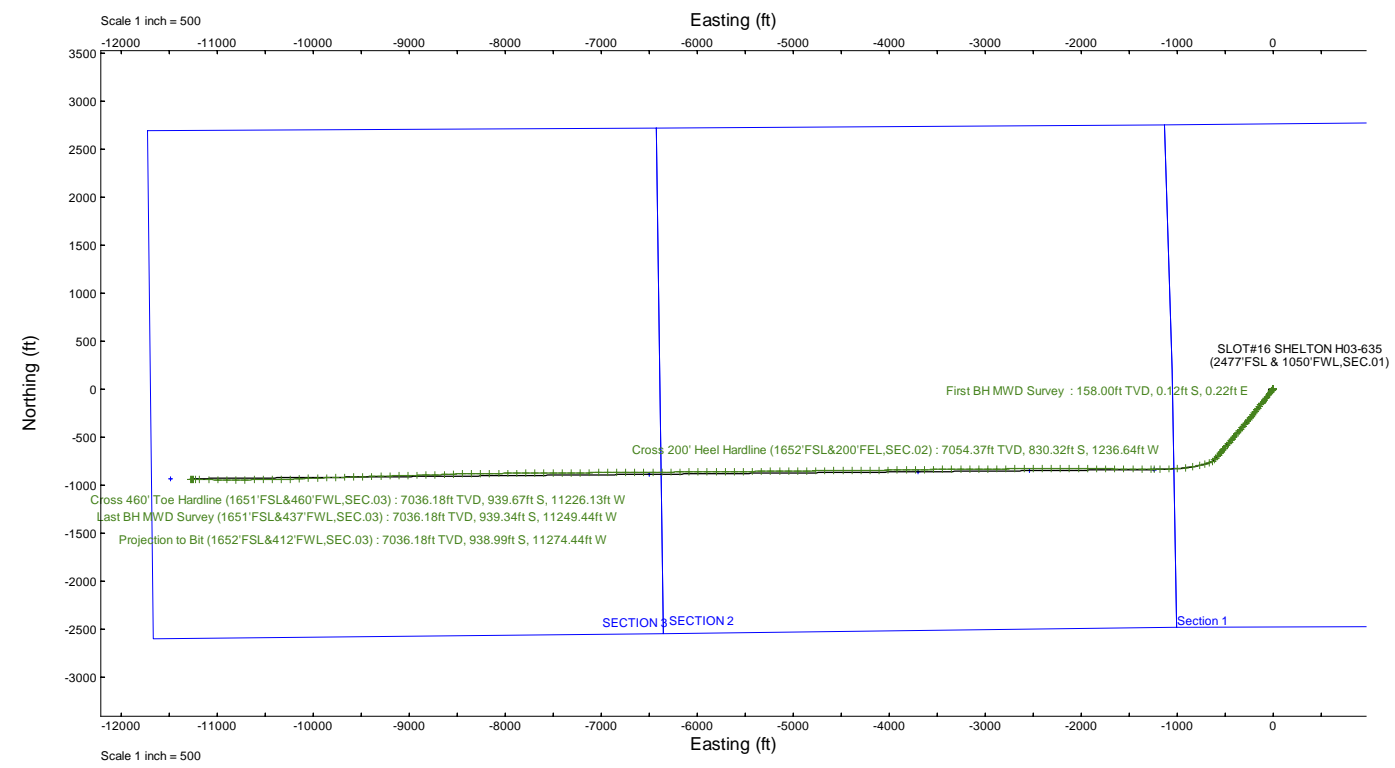
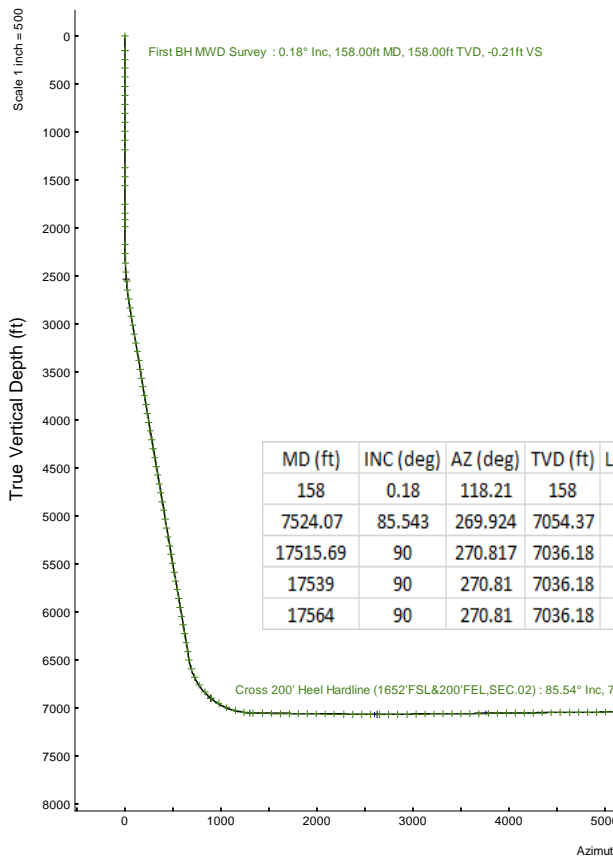


NOBLE ENERGY, INC

Location: COLORADO Slot: SLOT#16 SHELTON H03-635 (2477'FSL & 1050'FWL, SEC.01)
 Field: WELD COUNTY (NOBLE NAD 83 GRID) Well: SHELTON H03-635
 Facility: SEC.01-T03N-R65W Wellbore: SHELTON H03-635 PWB

Plot reference wellpath is SHELTON H03-635 (REV-C.0) PWB	Grid System: NAD83 / Lambert Colorado SP, Northern Zone (S01), US feet
True vertical depths are referenced to (4840'GL+30'KB@4870'RKB) (RKB)	North Reference: Grid north
Reference wellpath measured depths are referenced to (4840'GL+30'KB@4870'RKB) (RKB)	Scale: True distance
(4840'GL+30'KB@4870'RKB) (RKB) to Mean Sea Level: 4870 feet	Coordinates are in feet referenced to Slot
Mean Sea Level to Ground level (At Slot: SLOT#16 SHELTON H03-635 (2477'FSL & 1050'FWL, SEC.01)): 0 feet	Depths are in feet
Offset wellpath MDs are referenced to each path's default MD datum	Created by: guemaler on 2023-07-13, Database: WA_Deriver

Location Information						
Facility Name			Grid East (US ft)	Grid North (US ft)	Latitude	Longitude
SEC.01-T03N-R65W			3247921.211	1334423.561	40°14'52.7388"N	104°36'42.5088"W
Slot			Grid East (US ft)	Grid North (US ft)	Latitude	Longitude
SLOT#16 SHELTON H03-635 (2477'FSL & 1050'FWL, SEC.01)			3246461.679	1336568.216	40°15'14.0760"N	104°37'1.0560"W
(4840'GL+30'KB@4870'RKB) (RKB) to Ground level (At Slot: SLOT#16 SHELTON H03-635 (2477'FSL & 1050'FWL, SEC.01))						4870ft
Mean Sea Level to Ground level (At Slot: SLOT#16 SHELTON H03-635 (2477'FSL & 1050'FWL, SEC.01))						0ft
(4840'GL+30'KB@4870'RKB) (RKB) to Mean Sea Level						4870ft



MD (ft)	INC (deg)	AZ (deg)	TVD (ft)	Local N (ft)	Local E (ft)	Comment
158	0.18	118.21	158	-0.12	0.22	First BH MWD Survey
7524.07	85.543	269.924	7054.37	-830.32	-1236.64	Cross 200' Heel Hardline (1652'FSL&200'FEL, SEC.02)
17515.69	90	270.817	7036.18	-939.67	-11226.13	Cross 460' Toe Hardline (1651'FSL&460'FWL, SEC.03)
17539	90	270.81	7036.18	-939.34	-11249.44	Last BH MWD Survey (1651'FSL&437'FWL, SEC.03)
17564	90	270.81	7036.18	-938.99	-11274.44	Projection to Bit (1652'FSL&412'FWL, SEC.03)

Cross 460' Toe Hardline (1651'FSL&460'FWL, SEC.03) : 90.00° Inc, 17515.69ft MD, 7036.18ft TVD, 11265.38ft VS
 Last BH MWD Survey (1651'FSL&437'FWL, SEC.03) : 90.00° Inc, 17539.00ft MD, 7036.18ft TVD, 11288.59ft VS
 Projection to Bit (1652'FSL&412'FWL, SEC.03) : 90.00° Inc, 17564.00ft MD, 7036.18ft TVD, 11313.47ft VS

Vertical Section (ft)
 Azimuth 265.28° with reference 0.00 N, 0.00 E
 Scale 1 inch = 500



Actual Wellpath Report

SHELTON H03-635 AWP

Page 1 of 8



REFERENCE WELLPATH IDENTIFICATION

Operator	NOBLE ENERGY, INC	Well	SHELTON H03-635
Field	WELD COUNTY (NOBLE NAD 83 GRID)	API	05-123-49058
Facility	SEC.01-T03N-R65W	Wellbore	SHELTON H03-635 AWB
Slot	SLOT#16 SHELTON H03-635 (2477'FSL & 1050'FWL,SEC.01)		

REPORT SETUP INFORMATION

Projection System	NAD83 / Lambert Colorado SP, Northern Zone (501), US feet	Software System	WellArchitect® 6.0
North Reference	Grid	User	Guenaler
Scale	0.999957	Report Generated	7/13/2023 at 12:58:37 PM
Convergence at slot	0.57° East	Database	WA_Denver

WELLPATH LOCATION

	Local coordinates		Grid coordinates		Geographic coordinates	
	North[ft]	East[ft]	Easting[US ft]	Northing[US ft]	Latitude	Longitude
Slot Location	2144.75	-1459.60	3246461.68	1336568.22	40.2539100°	-104.6169600°
Facility Reference Pt			3247921.21	1334423.56	40.2479830°	-104.6118080°
Field Reference Pt			3000000.00	4454105.15	48.7761986°	-105.5000000°

WELLPATH DATUM

Calculation method	Minimum curvature	(4840'GL+30'KB@4870'RKB) (RKB) to Facility Vertical Datum	4870.00ft
Horizontal Reference Pt	Slot	(4840'GL+30'KB@4870'RKB) (RKB) to Mean Sea Level	4870.00ft
Vertical Reference Pt	(4840'GL+30'KB@4870'RKB) (RKB)	(4840'GL+30'KB@4870'RKB) (RKB) to Ground Level at Slot (SLOT#16 SHELTON H03-635 (2477'FSL & 1050'FWL,SEC.01))	4870.00ft
MD Reference Pt	(4840'GL+30'KB@4870'RKB) (RKB)	Section Origin	N 0.00, E 0.00 ft
Field Vertical Reference	Mean Sea Level	Section Azimuth	265.28°

REFERENCE WELLPATH IDENTIFICATION			
Operator	NOBLE ENERGY, INC	Well	SHELTON H03-635
Field	WELD COUNTY (NOBLE NAD 83 GRID)	API	05-123-49058
Facility	SEC.01-T03N-R65W	Wellbore	SHELTON H03-635 AWB
Slot	SLOT#16 SHELTON H03-635 (2477'FSL & 1050'FWL,SEC.01)		

WELLPATH DATA (187 stations)										
MD [ft]	Inclination [°]	Azimuth [°]	TVD [ft]	Vert Sect [ft]	North [ft]	East [ft]	Latitude	Longitude	DLS ["/100ft]	Comments
0.00	0.000	118.210	0.00	0.00	0.00	0.00	40.2539100	-104.6169600	0.00	
158.00	0.180	118.210	158.00	-0.21	-0.12	0.22	40.2539097	-104.6169592	0.11	First BH MWD Survey
248.00	0.050	119.690	248.00	-0.36	-0.20	0.38	40.2539094	-104.6169587	0.14	
338.00	0.120	20.970	338.00	-0.43	-0.14	0.45	40.2539096	-104.6169584	0.15	
432.00	0.100	125.360	432.00	-0.54	-0.09	0.55	40.2539097	-104.6169580	0.19	
527.00	0.320	188.030	527.00	-0.54	-0.40	0.58	40.2539089	-104.6169579	0.30	
621.00	0.300	209.930	621.00	-0.35	-0.87	0.42	40.2539076	-104.6169585	0.13	
715.00	0.200	238.540	715.00	-0.06	-1.17	0.16	40.2539068	-104.6169595	0.17	
810.00	0.070	182.600	810.00	0.10	-1.32	0.01	40.2539064	-104.6169600	0.18	
904.00	0.110	106.880	904.00	0.02	-1.40	0.10	40.2539062	-104.6169597	0.12	
999.00	0.170	89.330	999.00	-0.21	-1.43	0.32	40.2539061	-104.6169589	0.08	
1093.00	0.130	144.380	1093.00	-0.40	-1.51	0.53	40.2539058	-104.6169582	0.15	
1187.00	0.110	138.220	1187.00	-0.51	-1.67	0.65	40.2539054	-104.6169577	0.03	
1376.00	0.070	331.890	1376.00	-0.57	-1.70	0.71	40.2539053	-104.6169575	0.09	
1471.00	0.170	7.880	1471.00	-0.58	-1.51	0.71	40.2539058	-104.6169575	0.13	
1565.00	0.220	9.340	1564.99	-0.65	-1.19	0.75	40.2539067	-104.6169573	0.05	
1754.00	1.070	289.320	1753.98	0.87	-0.25	-0.85	40.2539093	-104.6169631	0.56	
1848.00	0.900	271.270	1847.97	2.41	0.06	-2.42	40.2539102	-104.6169687	0.37	
1915.00	0.450	230.630	1914.96	3.15	-0.10	-3.15	40.2539098	-104.6169713	0.94	
1990.00	0.190	63.860	1989.96	3.27	-0.23	-3.26	40.2539095	-104.6169717	0.85	
2179.00	0.070	66.120	2178.96	2.87	-0.05	-2.88	40.2539100	-104.6169703	0.06	
2273.00	1.160	213.060	2272.96	3.40	-0.82	-3.34	40.2539078	-104.6169720	1.30	
2368.00	3.670	217.340	2367.87	6.03	-4.04	-5.71	40.2538991	-104.6169806	2.65	
2462.00	5.210	217.150	2461.58	10.89	-9.84	-10.12	40.2538833	-104.6169966	1.64	
2557.00	7.580	218.410	2555.98	18.05	-18.19	-16.61	40.2538605	-104.6170202	2.50	
2651.00	9.230	217.370	2648.97	27.34	-29.04	-25.04	40.2538310	-104.6170507	1.76	
2745.00	12.390	218.050	2741.29	39.25	-42.97	-35.84	40.2537930	-104.6170899	3.36	
2840.00	13.430	217.670	2833.89	53.61	-59.73	-48.86	40.2537474	-104.6171372	1.10	
2934.00	13.720	217.490	2925.26	68.45	-77.22	-62.32	40.2536998	-104.6171860	0.31	
3028.00	13.290	215.600	3016.66	82.93	-94.85	-75.39	40.2536517	-104.6172335	0.66	
3123.00	13.350	218.410	3109.11	97.50	-112.32	-88.56	40.2536041	-104.6172813	0.68	
3217.00	13.650	223.030	3200.51	113.13	-128.93	-102.87	40.2535589	-104.6173331	1.19	
3312.00	13.390	223.430	3292.88	129.62	-145.11	-118.08	40.2535149	-104.6173882	0.29	
3406.00	13.280	217.720	3384.35	145.01	-161.56	-132.17	40.2534702	-104.6174393	1.41	
3501.00	13.320	217.870	3476.80	159.78	-178.83	-145.56	40.2534231	-104.6174879	0.06	
3595.00	13.200	217.810	3568.30	174.36	-195.86	-158.79	40.2533767	-104.6175358	0.13	
3689.00	13.350	217.950	3659.78	188.97	-212.89	-172.04	40.2533303	-104.6175839	0.16	
3784.00	13.300	217.650	3752.23	203.77	-230.19	-185.46	40.2532832	-104.6176326	0.09	
3878.00	13.520	217.570	3843.66	218.45	-247.46	-198.77	40.2532362	-104.6176809	0.23	
3972.00	13.490	217.210	3935.06	233.16	-264.90	-212.10	40.2531887	-104.6177293	0.09	
4067.00	13.540	217.600	4027.43	248.06	-282.54	-225.58	40.2531406	-104.6177782	0.11	
4161.00	13.460	220.610	4118.84	263.24	-299.56	-239.42	40.2530943	-104.6178284	0.75	
4256.00	13.530	220.390	4211.21	278.98	-316.42	-253.82	40.2530484	-104.6178806	0.09	
4350.00	13.470	220.510	4302.62	294.54	-333.12	-268.05	40.2530030	-104.6179322	0.07	
4445.00	13.560	220.220	4394.99	310.26	-350.04	-282.43	40.2529569	-104.6179843	0.12	

REFERENCE WELLPATH IDENTIFICATION			
Operator	NOBLE ENERGY, INC	Well	SHELTON H03-635
Field	WELD COUNTY (NOBLE NAD 83 GRID)	API	05-123-49058
Facility	SEC.01-T03N-R65W	Wellbore	SHELTON H03-635 AWB
Slot	SLOT#16 SHELTON H03-635 (2477'FSL & 1050'FWL,SEC.01)		

WELLPATH DATA (187 stations) † = interpolated, ‡ = extrapolated station										
MD [ft]	Inclination [°]	Azimuth [°]	TVD [ft]	Vert Sect [ft]	North [ft]	East [ft]	Latitude	Longitude	DLS [°/100ft]	Comments
4540.00	13.500	220.470	4487.35	325.99	-366.98	-296.82	40.2529108	-104.6180364	0.09	
4634.00	13.610	220.750	4578.73	341.66	-383.70	-311.16	40.2528653	-104.6180884	0.14	
4728.00	13.440	220.260	4670.13	357.27	-400.42	-325.44	40.2528198	-104.6181402	0.22	
4823.00	13.480	220.700	4762.52	372.96	-417.24	-339.80	40.2527740	-104.6181922	0.12	
4917.00	13.490	220.560	4853.92	388.55	-433.87	-354.07	40.2527288	-104.6182439	0.04	
5011.00	13.340	220.180	4945.36	403.99	-450.49	-368.20	40.2526835	-104.6182951	0.19	
5106.00	13.790	220.520	5037.71	419.77	-467.47	-382.62	40.2526373	-104.6183474	0.48	
5200.00	11.780	221.040	5129.37	434.60	-483.22	-396.20	40.2525945	-104.6183966	2.14	
5295.00	13.420	220.610	5222.08	449.39	-498.91	-409.75	40.2525518	-104.6184457	1.73	
5389.00	13.360	220.710	5313.53	464.88	-515.42	-423.93	40.2525068	-104.6184971	0.07	
5484.00	13.650	220.510	5405.90	480.66	-532.26	-438.37	40.2524610	-104.6185494	0.31	
5578.00	13.530	220.530	5497.27	496.34	-549.05	-452.72	40.2524153	-104.6186014	0.13	
5673.00	13.600	220.590	5589.62	512.17	-565.98	-467.21	40.2523692	-104.6186539	0.08	
5767.00	13.660	220.630	5680.97	527.92	-582.80	-481.63	40.2523235	-104.6187062	0.06	
5861.00	13.630	220.610	5772.32	543.70	-599.63	-496.07	40.2522777	-104.6187585	0.03	
5955.00	13.500	220.540	5863.70	559.36	-616.37	-510.41	40.2522321	-104.6188105	0.14	
6050.00	13.590	220.670	5956.05	575.19	-633.27	-524.89	40.2521861	-104.6188629	0.10	
6144.00	13.540	220.430	6047.43	590.85	-650.02	-539.22	40.2521405	-104.6189149	0.08	
6238.00	13.470	220.290	6138.83	606.39	-666.75	-553.44	40.2520950	-104.6189664	0.08	
6333.00	13.450	220.440	6231.22	622.05	-683.60	-567.76	40.2520491	-104.6190183	0.04	
6427.00	13.250	220.760	6322.68	637.48	-700.07	-581.88	40.2520043	-104.6190695	0.23	
6522.00	13.310	220.200	6415.14	652.96	-716.67	-596.05	40.2519591	-104.6191208	0.15	
6616.00	13.900	220.960	6506.51	668.68	-733.46	-610.43	40.2519134	-104.6191730	0.66	
6711.00	19.900	240.250	6597.43	691.53	-750.13	-631.99	40.2518683	-104.6192508	8.57	
6805.00	26.500	250.060	6683.81	726.32	-765.25	-665.64	40.2518277	-104.6193719	8.11	
6900.00	34.360	255.740	6765.68	773.29	-779.10	-711.63	40.2517909	-104.6195371	8.80	
6994.00	43.340	256.810	6838.81	831.47	-793.02	-768.86	40.2517543	-104.6197426	9.58	
7088.00	51.310	259.280	6902.48	899.98	-807.23	-836.43	40.2517171	-104.6199852	8.69	
7182.00	59.000	263.130	6956.16	976.85	-818.90	-912.61	40.2516872	-104.6202585	8.84	
7277.00	66.880	267.010	6999.36	1061.37	-826.06	-996.81	40.2516698	-104.6205604	9.05	
7371.00	76.330	269.090	7028.99	1150.35	-829.05	-1085.85	40.2516640	-104.6208795	10.27	
7466.00	81.070	269.620	7047.60	1243.25	-830.09	-1178.98	40.2516637	-104.6212131	5.02	
7524.07†	85.543	269.924	7054.37	1300.73	-830.32	-1236.64	40.2516646	-104.6214197	7.72	Cross 200' Heel Hardline (1652'FSL&200'FEL,SEC.02)
7560.00	88.310	270.110	7056.30	1336.48	-830.31	-1272.51	40.2516656	-104.6215482	7.72	
7655.00	88.950	270.490	7058.57	1431.09	-829.81	-1367.48	40.2516696	-104.6218884	0.78	
7749.00	88.770	269.980	7060.44	1524.72	-829.43	-1461.46	40.2516732	-104.6222251	0.58	
7844.00	88.920	270.190	7062.35	1619.37	-829.29	-1556.44	40.2516762	-104.6225653	0.27	
7938.00	89.600	270.480	7063.57	1712.99	-828.74	-1650.43	40.2516802	-104.6229020	0.79	
8033.00	89.420	270.050	7064.38	1807.63	-828.30	-1745.43	40.2516840	-104.6232423	0.49	
8127.00	89.540	270.250	7065.23	1901.29	-828.05	-1839.42	40.2516872	-104.6235790	0.25	
8221.00	89.510	270.430	7066.01	1994.92	-827.49	-1933.42	40.2516913	-104.6239157	0.19	
8316.00	89.570	270.400	7066.77	2089.53	-826.80	-2028.41	40.2516958	-104.6242560	0.07	
8410.00	89.540	270.570	7067.50	2183.14	-826.01	-2122.41	40.2517005	-104.6245927	0.18	
8505.00	89.540	270.100	7068.27	2277.77	-825.45	-2217.40	40.2517046	-104.6249330	0.49	
8599.00	89.350	269.910	7069.18	2371.45	-825.45	-2311.40	40.2517072	-104.6252697	0.29	



Actual Wellpath Report

SHELTON H03-635 AWP

Page 4 of 8



REFERENCE WELLPATH IDENTIFICATION			
Operator	NOBLE ENERGY, INC	Well	SHELTON H03-635
Field	WELD COUNTY (NOBLE NAD 83 GRID)	API	05-123-49058
Facility	SEC.01-T03N-R65W	Wellbore	SHELTON H03-635 AWB
Slot	SLOT#16 SHELTON H03-635 (2477'FSL & 1050'FWL,SEC.01)		

WELLPATH DATA (187 stations)										
MD [ft]	Inclination [°]	Azimuth [°]	TVD [ft]	Vert Sect [ft]	North [ft]	East [ft]	Latitude	Longitude	DLS [°/100ft]	Comments
8694.00	89.540	270.410	7070.10	2466.10	-825.18	-2406.39	40.2517105	-104.6256100	0.56	
8788.00	89.750	269.330	7070.68	2559.80	-825.39	-2500.39	40.2517124	-104.6259467	1.17	
8882.00	89.510	269.460	7071.29	2653.55	-826.39	-2594.38	40.2517122	-104.6262835	0.29	
8977.00	90.550	269.160	7071.24	2748.32	-827.53	-2689.37	40.2517117	-104.6266238	1.14	
9072.00	90.620	269.560	7070.27	2843.07	-828.59	-2784.36	40.2517113	-104.6269641	0.43	
9166.00	90.680	269.550	7069.20	2936.80	-829.32	-2878.35	40.2517119	-104.6273009	0.06	
9260.00	90.620	269.720	7068.14	3030.53	-829.92	-2972.35	40.2517128	-104.6276376	0.19	
9355.00	90.680	269.610	7067.06	3125.24	-830.47	-3067.34	40.2517138	-104.6279779	0.13	
9449.00	90.650	269.230	7065.97	3218.99	-831.43	-3161.33	40.2517137	-104.6283147	0.41	
9543.00	90.620	269.390	7064.92	3312.75	-832.56	-3255.31	40.2517132	-104.6286514	0.17	
9638.00	90.620	269.560	7063.90	3407.49	-833.43	-3350.30	40.2517133	-104.6289917	0.18	
9732.00	90.580	269.490	7062.91	3501.23	-834.21	-3444.30	40.2517137	-104.6293285	0.09	
9826.00	90.620	269.320	7061.93	3594.98	-835.18	-3538.29	40.2517136	-104.6296652	0.19	
9920.00	90.550	269.250	7060.97	3688.75	-836.36	-3632.27	40.2517129	-104.6300019	0.11	
10015.00	90.550	269.320	7060.06	3783.51	-837.54	-3727.26	40.2517122	-104.6303423	0.07	
10109.00	90.580	269.240	7059.13	3877.28	-838.72	-3821.25	40.2517115	-104.6306790	0.09	
10204.00	90.580	269.650	7058.17	3972.02	-839.64	-3916.24	40.2517115	-104.6310193	0.43	
10298.00	90.490	268.310	7057.29	4065.82	-841.32	-4010.22	40.2517094	-104.6313560	1.43	
10392.00	90.680	269.380	7056.33	4159.63	-843.21	-4104.19	40.2517068	-104.6316928	1.16	
10487.00	90.770	269.750	7055.13	4254.36	-843.93	-4199.18	40.2517073	-104.6320331	0.40	
10581.00	90.800	269.500	7053.84	4348.08	-844.55	-4293.17	40.2517082	-104.6323698	0.27	
10675.00	90.520	269.430	7052.76	4441.82	-845.43	-4387.16	40.2517083	-104.6327065	0.31	
10769.00	90.620	269.490	7051.82	4535.57	-846.31	-4481.15	40.2517084	-104.6330433	0.12	
10864.00	90.680	269.620	7050.74	4630.30	-847.05	-4576.14	40.2517089	-104.6333836	0.15	
10958.00	90.650	269.640	7049.65	4724.02	-847.66	-4670.14	40.2517098	-104.6337203	0.04	
11053.00	90.620	269.320	7048.60	4818.76	-848.52	-4765.13	40.2517099	-104.6340606	0.34	
11147.00	90.580	269.340	7047.62	4912.52	-849.62	-4859.11	40.2517094	-104.6343974	0.05	
11241.00	90.680	269.550	7046.58	5006.27	-850.53	-4953.10	40.2517095	-104.6347341	0.25	
11336.00	90.650	269.240	7045.48	5101.02	-851.53	-5048.09	40.2517093	-104.6350744	0.33	
11430.00	90.650	269.320	7044.41	5194.78	-852.71	-5142.08	40.2517085	-104.6354112	0.09	
11524.00	90.680	269.620	7043.32	5288.53	-853.58	-5236.07	40.2517087	-104.6357479	0.32	
11618.00	90.680	269.300	7042.21	5382.27	-854.47	-5330.06	40.2517087	-104.6360846	0.34	
11712.00	90.520	269.440	7041.22	5476.03	-855.50	-5424.05	40.2517084	-104.6364214	0.23	
11807.00	90.620	269.500	7040.28	5570.77	-856.38	-5519.04	40.2517085	-104.6367617	0.12	
11901.00	90.580	269.570	7039.29	5664.50	-857.14	-5613.03	40.2517090	-104.6370984	0.09	
11995.00	90.550	269.260	7038.37	5758.26	-858.10	-5707.02	40.2517088	-104.6374352	0.33	
12090.00	90.680	269.700	7037.35	5852.99	-858.96	-5802.01	40.2517090	-104.6377755	0.48	
12184.00	90.650	269.640	7036.26	5946.71	-859.51	-5896.00	40.2517100	-104.6381122	0.07	
12278.00	90.830	269.900	7035.04	6040.42	-859.88	-5989.99	40.2517115	-104.6384490	0.34	
12372.00	90.550	269.350	7033.91	6134.14	-860.50	-6083.98	40.2517123	-104.6387857	0.66	
12467.00	90.680	269.470	7032.89	6228.89	-861.48	-6178.97	40.2517122	-104.6391260	0.19	
12561.00	90.680	269.790	7031.77	6322.61	-862.08	-6272.96	40.2517130	-104.6394627	0.34	
12656.00	90.550	269.340	7030.76	6417.34	-862.80	-6367.96	40.2517136	-104.6398031	0.49	
12750.00	90.740	269.530	7029.70	6511.09	-863.73	-6461.95	40.2517135	-104.6401398	0.29	
12845.00	90.680	269.460	7028.52	6605.82	-864.57	-6556.93	40.2517137	-104.6404801	0.10	

REFERENCE WELLPATH IDENTIFICATION			
Operator	NOBLE ENERGY, INC	Well	SHELTON H03-635
Field	WELD COUNTY (NOBLE NAD 83 GRID)	API	05-123-49058
Facility	SEC.01-T03N-R65W	Wellbore	SHELTON H03-635 AWB
Slot	SLOT#16 SHELTON H03-635 (2477'FSL & 1050'FWL,SEC.01)		

WELLPATH DATA (187 stations)										
MD [ft]	Inclination [°]	Azimuth [°]	TVD [ft]	Vert Sect [ft]	North [ft]	East [ft]	Latitude	Longitude	DLS [°/100ft]	Comments
12939.00	90.550	269.340	7027.51	6699.58	-865.55	-6650.92	40.2517135	-104.6408168	0.19	
13034.00	90.890	270.130	7026.32	6794.28	-865.99	-6745.91	40.2517149	-104.6411572	0.91	
13128.00	90.580	269.730	7025.11	6887.96	-866.11	-6839.91	40.2517170	-104.6414939	0.54	
13222.00	90.740	269.450	7024.03	6981.69	-866.78	-6933.90	40.2517177	-104.6418306	0.34	
13317.00	91.080	270.070	7022.52	7076.39	-867.18	-7028.88	40.2517191	-104.6421709	0.74	
13411.00	89.420	268.090	7022.11	7170.17	-868.69	-7122.86	40.2517175	-104.6425076	2.75	
13506.00	89.600	269.620	7022.92	7264.98	-870.59	-7217.84	40.2517148	-104.6428479	1.62	
13600.00	89.690	269.600	7023.50	7358.71	-871.23	-7311.83	40.2517155	-104.6431847	0.10	
13695.00	89.570	269.320	7024.12	7453.46	-872.12	-7406.83	40.2517156	-104.6435250	0.32	
13789.00	89.570	269.710	7024.82	7547.20	-872.92	-7500.82	40.2517159	-104.6438617	0.41	
13884.00	89.540	269.720	7025.56	7641.91	-873.39	-7595.82	40.2517171	-104.6442021	0.03	
13979.00	89.570	269.790	7026.30	7736.62	-873.79	-7690.81	40.2517185	-104.6445424	0.08	
14073.00	89.630	269.780	7026.96	7830.33	-874.15	-7784.81	40.2517200	-104.6448791	0.06	
14167.00	89.940	269.780	7027.31	7924.04	-874.51	-7878.81	40.2517215	-104.6452159	0.33	
14262.00	89.940	269.700	7027.41	8018.75	-874.94	-7973.81	40.2517229	-104.6455562	0.08	
14356.00	89.910	269.540	7027.53	8112.48	-875.56	-8067.81	40.2517236	-104.6458930	0.17	
14451.00	89.970	269.530	7027.63	8207.22	-876.33	-8162.80	40.2517240	-104.6462333	0.06	
14546.00	90.000	269.610	7027.65	8301.95	-877.05	-8257.80	40.2517246	-104.6465737	0.09	
14640.00	89.720	269.520	7027.88	8395.69	-877.76	-8351.80	40.2517251	-104.6469104	0.31	
14735.00	89.630	268.660	7028.42	8490.48	-879.27	-8446.78	40.2517235	-104.6472507	0.91	
14829.00	89.880	266.220	7028.83	8584.40	-883.47	-8540.68	40.2517144	-104.6475873	2.61	
14924.00	89.910	268.520	7029.00	8679.34	-887.83	-8635.57	40.2517050	-104.6479274	2.42	
15018.00	90.030	268.640	7029.05	8773.18	-890.16	-8729.55	40.2517011	-104.6482641	0.18	
15113.00	89.940	268.360	7029.07	8868.03	-892.64	-8824.51	40.2516967	-104.6486044	0.31	
15207.00	89.880	268.300	7029.22	8961.90	-895.38	-8918.47	40.2516917	-104.6489411	0.09	
15301.00	90.030	268.640	7029.30	9055.75	-897.89	-9012.44	40.2516873	-104.6492778	0.40	
15395.00	89.940	268.510	7029.32	9149.60	-900.23	-9106.41	40.2516833	-104.6496145	0.17	
15490.00	89.910	268.690	7029.44	9244.44	-902.55	-9201.38	40.2516795	-104.6499548	0.19	
15584.00	89.820	268.250	7029.67	9338.29	-905.06	-9295.35	40.2516750	-104.6502915	0.48	
15678.00	90.090	268.320	7029.74	9432.16	-907.87	-9389.31	40.2516698	-104.6506282	0.30	
15772.00	89.850	268.230	7029.79	9526.03	-910.70	-9483.26	40.2516645	-104.6509649	0.27	
15867.00	89.970	268.600	7029.94	9620.89	-913.33	-9578.23	40.2516598	-104.6513052	0.41	
15961.00	89.940	268.680	7030.01	9714.73	-915.56	-9672.20	40.2516561	-104.6516419	0.09	
16055.00	89.660	268.050	7030.34	9808.59	-918.24	-9766.16	40.2516512	-104.6519786	0.73	
16150.00	89.910	268.290	7030.70	9903.47	-921.28	-9861.11	40.2516454	-104.6523188	0.36	
16244.00	90.120	268.710	7030.67	9997.32	-923.74	-9955.08	40.2516411	-104.6526555	0.50	
16339.00	89.230	267.680	7031.21	10092.20	-926.73	-10050.03	40.2516354	-104.6529958	1.43	
16433.00	89.420	265.960	7032.32	10186.15	-931.94	-10143.87	40.2516235	-104.6533322	1.84	
16528.00	89.660	268.280	7033.08	10281.09	-936.72	-10238.74	40.2516129	-104.6536722	2.46	
16622.00	89.940	270.680	7033.41	10374.84	-937.57	-10332.73	40.2516130	-104.6540089	2.57	
16716.00	89.910	270.540	7033.53	10468.43	-936.57	-10426.73	40.2516182	-104.6543456	0.15	
16811.00	89.690	269.880	7033.86	10563.08	-936.22	-10521.72	40.2516217	-104.6546859	0.73	
16905.00	89.510	264.730	7034.52	10656.98	-940.64	-10615.59	40.2516120	-104.6550223	5.48	
17000.00	90.060	270.890	7034.88	10751.85	-944.27	-10710.47	40.2516045	-104.6553623	6.51	
17094.00	89.820	270.240	7034.98	10845.45	-943.34	-10804.47	40.2516095	-104.6556990	0.74	

REFERENCE WELLPATH IDENTIFICATION			
Operator	NOBLE ENERGY, INC	Well	SHELTON H03-635
Field	WELD COUNTY (NOBLE NAD 83 GRID)	API	05-123-49058
Facility	SEC.01-T03N-R65W	Wellbore	SHELTON H03-635 AWB
Slot	SLOT#16 SHELTON H03-635 (2477'FSL & 1050'FWL,SEC.01)		

WELLPATH DATA (187 stations) † = interpolated, ‡ = extrapolated station										
MD [ft]	Inclination [°]	Azimuth [°]	TVD [ft]	Vert Sect [ft]	North [ft]	East [ft]	Latitude	Longitude	DLS [°/100ft]	Comments
17188.00	89.570	270.390	7035.48	10939.08	-942.82	-10898.46	40.2516134	-104.6560357	0.31	
17283.00	89.880	270.300	7035.93	11033.71	-942.25	-10993.46	40.2516175	-104.6563760	0.34	
17378.00	89.910	270.620	7036.11	11128.32	-941.49	-11088.46	40.2516220	-104.6567163	0.34	
17472.00	90.000	270.830	7036.18	11221.90	-940.30	-11182.45	40.2516278	-104.6570530	0.24	
17515.69†	90.000	270.817	7036.18	11265.38	-939.67	-11226.13	40.2516306	-104.6572095	0.03	Cross 460' Toe Hardline (1651'FSL&460'FWL,SEC.03)
17539.00	90.000	270.810	7036.18	11288.59	-939.34	-11249.44	40.2516321	-104.6572930	0.03	Last BH MWD Survey (1651'FSL&437'FWL,SEC.03)
17564.00‡	90.000	270.810	7036.18	11313.47	-938.99	-11274.44	40.2516338	-104.6573825	0.00	Projection to Bit (1652'FSL&412'FWL,SEC.03)



Actual Wellpath Report

SHELTON H03-635 AWP

Page 7 of 8



REFERENCE WELLPATH IDENTIFICATION			
Operator	NOBLE ENERGY, INC	Well	SHELTON H03-635
Field	WELD COUNTY (NOBLE NAD 83 GRID)	API	05-123-49058
Facility	SEC.01-T03N-R65W	Wellbore	SHELTON H03-635 AWB
Slot	SLOT#16 SHELTON H03-635 (2477'FSL & 1050'FWL,SEC.01)		

TARGETS								
Name	TVD [ft]	North [ft]	East [ft]	Grid East [US ft]	Grid North [US ft]	Latitude	Longitude	Shape
SHELTON STATE H01-783 Section 1	6.00	-2147.74	-556.48	3245905.23	1334420.57	40.2480300	-104.6190300	polygon
	2D Polygon: dimensions not calculated							
SHELTON H03-683 SECTION 2	16.00	2440.92	-736.04	3245725.68	1339009.02	40.2606300	-104.6195100	polygon
	2D Polygon: dimensions not calculated							
SHELTON H03-683 SECTION 3	16.00	2440.92	-736.04	3245725.68	1339009.02	40.2606300	-104.6195100	polygon
	2D Polygon: dimensions not calculated							
SHELTON H03-635 AC Inflection Point_2	7030.00	-885.24	-6500.00	3239961.97	1335683.02	40.2516555	-104.6402769	point
SHELTON H03-635 BPZ Rev-3 (1661'FSL & 460'FWL,SEC.03)	7030.00	-929.95	-11226.13	3235236.05	1335638.31	40.2516573	-104.6572091	point
SHELTON H03-635 AC Inflection Point	7055.00	-858.75	-3700.00	3242761.85	1335709.50	40.2516532	-104.6302453	point
SHELTON H03-635 BHL Plan (1661'FSL & 200'FWL,SEC.03)	7055.00	-932.04	-11485.46	3234976.74	1335636.22	40.2516583	-104.6581382	point
SHELTON H03-635 BPZ Rev-2 (1661'FSL & 460'FWL,SEC.03)	7055.00	-929.95	-11226.13	3235236.05	1335638.31	40.2516573	-104.6572091	point
SHELTON H03-635 LP Plan (1647'FSL & 200'FEL,SEC.02)	7055.00	-835.33	-1236.03	3245225.70	1335732.92	40.2516509	-104.6214177	point
SHELTON H03-635 LP Rev-2 (1647'FSL & 200'FEL,SEC.02)	7055.00	-835.44	-1236.64	3245225.09	1335732.81	40.2516506	-104.6214199	point
SHELTON H03-635 REV-2 Inflection Point	7070.00	-847.73	-2535.75	3243926.04	1335720.52	40.2516521	-104.6260742	point

WELLPATH COMPOSITION - Ref Wellbore: SHELTON H03-635 AWB Ref Wellpath: SHELTON H03-635 AWP					
Start MD [ft]	End MD [ft]	Positional Uncertainty Model	Log Name/Comment	Wellbore	Survey Date
0.00	1915.00	OWSG MWD rev2 (MS+IFR1)	13.5" EVO Surface OWSG MWD rev2 (MS+IFR1) <158'-1915'>	SHELTON H03-635 AWB	5/26/2023
1915.00	17564.00	OWSG MWD rev2 (MS+IFR1)	8.5" ATC Lucida OWSG MWD rev2 (MS+IFR1) <1990'-17539'>	SHELTON H03-635 AWB	6/6/2023

REFERENCE WELLPATH IDENTIFICATION			
Operator	NOBLE ENERGY, INC	Well	SHELTON H03-635
Field	WELD COUNTY (NOBLE NAD 83 GRID)	API	05-123-49058
Facility	SEC.01-T03N-R65W	Wellbore	SHELTON H03-635 AWB
Slot	SLOT#16 SHELTON H03-635 (2477'FSL & 1050'FWL,SEC.01)		

WELLPATH COMMENTS				
MD [ft]	Inclination [°]	Azimuth [°]	TVD [ft]	Comment
158.00	0.180	118.210	158.00	First BH MWD Survey
7524.07	85.543	269.924	7054.37	Cross 200' Heel Hardline (1652'FSL&200'FEL,SEC.02)
17515.69	90.000	270.817	7036.18	Cross 460' Toe Hardline (1651'FSL&460'FWL,SEC.03)
17539.00	90.000	270.810	7036.18	Last BH MWD Survey (1651'FSL&437'FWL,SEC.03)
17564.00	90.000	270.810	7036.18	Projection to Bit (1652'FSL&412'FWL,SEC.03)