



GMT Exploration SQUEEZE POST JOB REPORT

**Marble 6-65 24-12 #1HN 05-039-06693
S:24 T:6N R:65W Elbert CO**

CallSheet #: 81470
Proposal #: 59887



Squeeze Post Job Report

Attention: Trevor Smith | (720) 335-9045 | trevor.smith@iptenergyservices.com

GMT Exploration

1560 BROADWAY, STE 2000 | DENVER, CO 80202

Dear Trevor Smith,

Thank you for the opportunity to provide cementing services on this well. American Cementing strives to achieve complete customer satisfaction. If you have any questions regarding the services or data provided, please contact American Cementing at any time.

Sincerely,

Jason Creel

Field Engineer Lead | (307) 256-0306 | jason.creel@americancementing.com

Field Office

1716 E Allison Rd, Cheyenne, WY 82007

Phone: (307) 414-0049

Job Details & Summary

Geometry

Type	Function	OD (in)	ID (in)	Weight (lb/ft)	Top (ft)	Bottom (ft)	Excess (%)
Casing	Outer	16	15.562	36.95	0	80	0
Open Hole	Outer		12.25		80	1080	100
Casing	Inner	9.625	9.001	32.3	0	1080	0

Equipment / People

Unit Type	Unit
Cement Trailer Float	CTF-566
Cement Trailer Float	CTF-338
Cement Trailer Float	CTF-193
Cement Utility Float	CUF(FIF)-163
Cement Pump Float	CPF-182

Timing

Event	Date/Time
Call Out	5/12/2022 12:00
Depart Facility	5/12/2022 14:30
On Location	5/12/2022 19:00
Rig Up Iron	5/12/2022 20:45
Job Started	5/13/2022 14:18
Job Completed	5/13/2022 15:50
Rig Down Iron	5/13/2022 16:25
Depart Location	5/13/2022 17:15

General Job Information

Metrics	Value
Well Fluid Density	8.4 lb/gal
Well Fluid Type	Water
Rig Circulation Vol	0 bbls
Rig Circulation Time	0 hours
Calculated Displacement	79 bbls
Actual Displacement	79 bbls
Total Spacer to Surface	0 bbls
Total CMT to Surface	0 bbls
Well Topped Out	No

Job Details

Metrics	Value
Flare Prior to Job	No
Flare Prior to Job	0 units
Flare During Job	No
Flare During Job	0 units
Flare at End of Job	No
Flare at End of Job	0 units
Well Full Prior to Job	Yes
Well Fluid Density Into Well	8.4 lb/gal
Well Fluid Density Out of Well	8.4 lb/gal

Job Details (cont.)

Metrics	Value
BHCT	86 °F
BHST	110 °F

Water Analysis

Metrics	Value	Recommended
Water Source	None	
Temperature	68 °F	50-80 °F
pH Level	7	5.5-8.5
Chlorides	286 mg/L	0-3000 mg/L
Total Alkalinity	180	0-1000
Total Hardness	150 mg/L	0-500 mg/L
Carbonates	0 mg/L	0-100 mg/L
Sulfates	<200 mg/L	0-1500 mg/L
Potassium	450 mg/L	0-3000 mg/L
Iron	0 mg/L	0-300 mg/L

Circulation

Lost Circulation Experienced
No

Job Execution Information

Fluid	Product	Function	Density (lb/gal)	Yield (ft ³ /sk)	Water Rq. (gal/sk)	Water Rq. (gal/bbl)	Volume (sks)	Volume (bbl)	Designed Top (ft)
1	Fresh Water	Flush	8.34			42.00		20.00	0
2	Tail	Tail	14.20	1.47	7.36		1200.00	314.61	0
3	Fresh Water	DisplacementFinal	8.34			42.00		88.00	0

Job Fluid Details

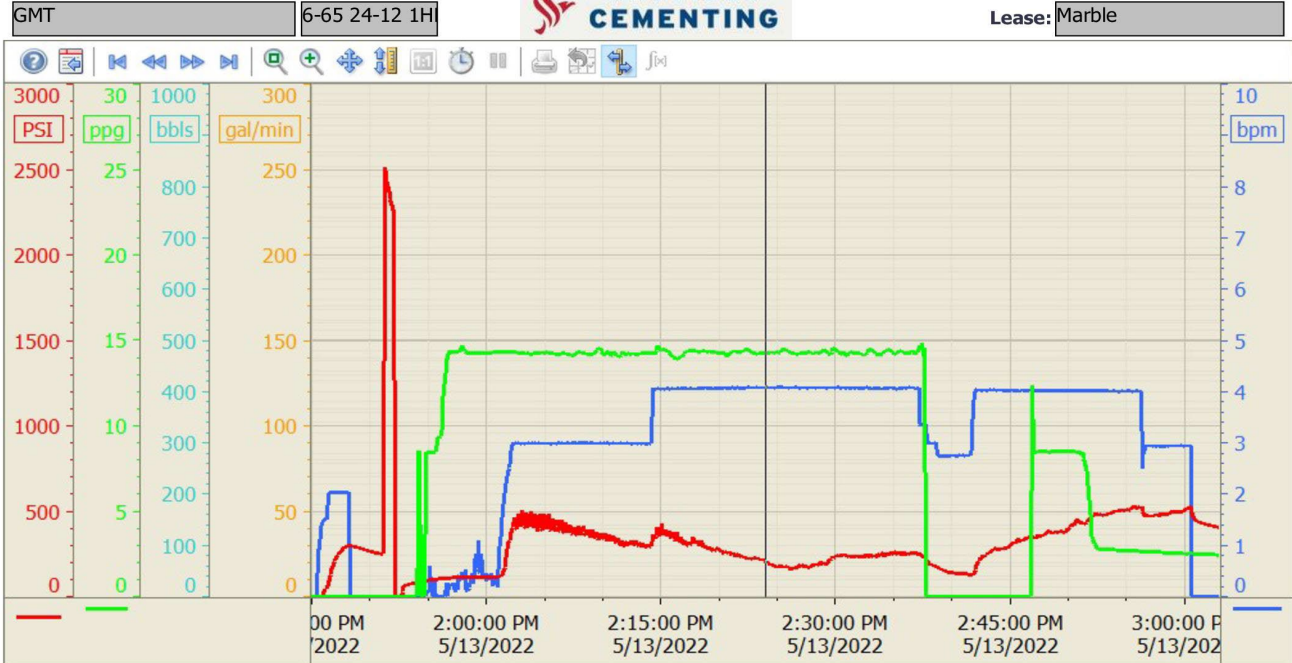
Fluid	Type	Fluid	Product	Function	Conc.	Uom
2	Tail	Tail	ASTM TYPE III	Cement	100.00	%
2	Tail	Tail	A-7P	Accelerator	1.00	%BWOB

Job Logs

Line	Event	Date (MM/DD/YY)	Time (HH:MM)	Density (lb/gal)	Pump Rate (bpm)	Pump Volume (bbls)	Pipe Pressure (psi)	Comment
1	Callout	5/12/2022	12:00					Customer calls with an O/L time of 21:00 on 5/12/22
2	Leave Yard	5/12/2022	14:30					Travel to location
3	Arrive On Location	5/12/2022	19:00					Wire line is in the hole shooting perms
4	Spot Trucks	5/12/2022	20:30					
5	Rig Up	5/12/2022	20:45					Rig up water, bulk, and treating line
6	Waiting	5/12/2022	21:30					Waiting on rig
7	Spot Trucks	5/13/2022	12:38					Spot Bulk trucks
8	Safety Meeting	5/13/2022	13:28					Pre-job safety meeting with AC crew, rig crew, and company man
9	Rig Up	5/13/2022	14:00					Load bottom plug into 9.625 casing, and rig up treating line to the night cap
10	Fill Lines	5/13/2022	14:18	8.34	2	5	250	Fill lines, and send the bottom plug
11	Pressure Test	5/13/2022	14:25	8.34	0	0	1750	Test pumps and lines
12	Pump Cement	5/13/2022	14:30	14.2	4	130	450	Mix, weigh, and pump 500 sks of cement @14.2 ppg
13	Pump Displacement	5/13/2022	15:13	8.34	4	0	100	Start displacement with 5 bbls of fresh water
14	Pump Displacement	5/13/2022	15:14	8.34	4	5	120	Finish displacement with retarded water
15	Shut Down	5/13/2022	15:43	8.34	0	79	311	Shut down, FCP was 411
16	Shut In	5/13/2022	15:48	8.34	0	0	300	Shut well in with 300 PSI on it
17	Safety Meeting	5/13/2022	15:55					Pre-rig down safety meeting
18	Rig Down	5/13/2022	16:25					Rig everything down
19	Leave Location	5/13/2022	17:15					

Pump Diagrams

Summary Trend



5/13/2022 4:01:50 PM