



GMT Exploration

SURFACE POST JOB REPORT

Marble 6-65 24-12 #1HN 05-039-06693
S:24 T:6N R:65W Elbert CO

CallSheet #: 81181
Proposal #: 59442



SURFACE Post Job Report

Attention: Trevor Smith | (720) 335-9045 | trevor.smith@iptenergyservices.com

GMT Exploration

1560 BROADWAY, STE 2000 | DENVER, CO 80202

Dear Trevor Smith,

Thank you for the opportunity to provide cementing services on this well. American Cementing strives to achieve complete customer satisfaction. If you have any questions regarding the services or data provided, please contact American Cementing at any time.

Sincerely,

Jason Creel

Field Engineer Lead | (307) 256-0306 | jason.creel@americancementing.com

Field Office 1716 E Allison Rd, Cheyenne, WY 82007
Phone: (307) 414-0049

Job Details & Summary

Geometry

Type	Function	OD (in)	ID (in)	Weight (lb/ft)	Top (ft)	Bottom (ft)	Excess (%)
Open Hole	Outer		12.25		0	2742	25
Casing	Inner	9.625	8.921	36	0	2732	0

Equipment / People

Unit Type	Unit
Cement Trailer Float	CTF-002
Cement Trailer Float	CTF-408
Cement Pump Float	CPF-074
Light Duty Vehicles	LDV-047

Timing

Event	Date/Time
Call Out	4/25/2022 02:00
Depart Facility	4/25/2022 04:30
On Location	4/25/2022 08:30
Rig Up Iron	4/25/2022 09:30
Job Started	4/26/2022 03:20
Job Completed	4/26/2022 05:03
Rig Down Iron	4/26/2022 05:20
Depart Location	4/26/2022 07:20

General Job Information

Metrics	Value
Well Fluid Density	8.5 lb/gal
Well Fluid Type	WBM
Rig Circulation Vol	0 bbls
Rig Circulation Time	0 hours
Calculated Displacement	207.6 bbls
Actual Displacement	207.6 bbls
Total Spacer to Surface	0 bbls
Total CMT to Surface	0 bbls
Well Topped Out	No

Casing Equipment

Type	Description	Qty
CENTRALIZER,9-5/8"NON-WELD	Bowstring	34

Job Details

Metrics	Value
Flare Prior to Job	No
Flare Prior to Job	0 units
Flare During Job	No
Flare During Job	0 units
Flare at End of Job	No
Flare at End of Job	0 units
Well Full Prior to Job	Yes
Well Fluid Density Into Well	8.5 lb/gal
Well Fluid Density Out of Well	8.5 lb/gal

Job Details (cont.)

Metrics	Value
BHCT	93 °F
BHST	113 °F

Water Analysis

Metrics	Value	Recommended
Water Source	None	
Temperature	60 °F	50-80 °F
pH Level	7	5.5-8.5
Chlorides	0 mg/L	0-3000 mg/L
Total Alkalinity	180	0-1000
Total Hardness	125 mg/L	0-500 mg/L
Carbonates	140 mg/L	0-100 mg/L
Sulfates	<200 mg/L	0-1500 mg/L
Potassium	450 mg/L	0-3000 mg/L
Iron	0.15 mg/L	0-300 mg/L

Circulation

Lost Circulation Experienced	Losses into Spacer	Losses into Cement	Losses into Displacement
Yes	NO	83	20

Circulation Details

Losses Occurred at 83 bbls into Lead Cement and got returns back about 20 bbls into Tail CMT. Losses Occurred at 20 bbls into Displacement and got returns back at 60 bbls into Displacement. Didn't get any Spacer or Cement to Surface.

Job Execution Information

Fluid	Product	Function	Density (lb/gal)	Yield (ft ³ /sk)	Water Rq. (gal/sk)	Water Rq. (gal/bbl)	Volume (sks)	Volume (bbl)	Designed Top (ft)
1	Fresh Water	Flush	8.34			42.00		20.00	0
2	Lead	Lead	12.00	2.41	14.09		241.00	103.26	0
3	Tail	Tail	14.20	1.46	7.34		281.00	73.15	1480
4	Fresh Water	DisplacementFinal	8.34			42.00		207.00	0

Job Fluid Details

Fluid	Type	Fluid	Product	Function	Conc.	Uom
2	Lead	Lead	ASTM TYPE III	Cement	100.00	%
2	Lead	Lead	A-7P	Accelerator	2.00	lb/sk
2	Lead	Lead	FP-24	Defoamer	0.30	%BWOB
2	Lead	Lead	IntegraSeal POLI	LostCirculation	0.13	lb/sk
2	Lead	Lead	XCem-1101	Thixotropic	2.00	lb/sk
3	Tail	Tail	ASTM TYPE III	Cement	100.00	%

Job Logs

Line	Event	Date (MM/DD/YY)	Time (HH:MM)	Density (lb/gal)	Pump Rate (bpm)	Pump Volume (bbls)	Pipe Pressure (psi)	Comment
1	Call Out	4/25/2022	02:00					Customer requested for Crew 11:00 On Location Time
2	Depart AC Yard	4/25/2022	04:30					AC Crew has Journey Management and Departs from Shop
3	Arrive on Location	4/25/2022	08:30					AC Crew Arrives on Location and Meets with Company Representative
4	Safety Meeting	4/25/2022	09:00					AC Crew has Safety Meeting Over Spotting Trucks and Rigging Up Iron
5	Rig Up Iron	4/25/2022	09:30					AC Crew Rigged Up Iron and Hoses
6	Waiting	4/25/2022	10:30					Waiting on Rig to Finish Drilling and Running Casing
7	Safety Meeting	4/26/2022	03:00					AC Crew has Safety Meeting with Rig Crew and Company Representative Over Job and Hazards
8	Fill Lines	4/26/2022	03:20	8.34	4.1	3	107	Fill Pump and Lines
9	Pressure Test	4/26/2022	03:22	8.34	0.5	0.5	4143	Pressure Test Iron and Values 4143 PSI
10	Pump Spacer	4/26/2022	03:25	8.34	5.7	20	207	Pump 20 bbls of Fresh Water Spacer with Blue Dye
11	Pump Lead Cement	4/26/2022	03:29	12	5.5	103	275	Pumped 103 bbls of 12 PPG Lead Cement (241 Sks, 2.41 Yield, 14.09 Gal/Sk) (Lost Returns at 83 bbls Away in Lead Cement)
12	Pump Tail Cement	4/26/2022	03:46	14.2	3.9	73	168	Pumped 73 bbls of 14.2 Tail Cement (281 Sks, 1.46 Yield, 7.34 Gal/Sk) (Regained Returns at 20 bbls into Tail Cement)
13	Shutdown	4/26/2022	04:04					Shutdown / Drop Plug
14	Displacement	4/26/2022	04:08	8.34	4.1	10	188	Pumped First 10 bbls of Fresh Water Displacement
15	Displacement	4/26/2022	04:10	8.34	4.3	207.6	141	Pump D8-22 Displacement / Total of 207.6 bbls of Displacement (Lost Returns at 20 bbls into Displacement and Regained Returns at 60 bbls into Displacement)
16	Land Plug	4/26/2022	04:58				700	Land Plug at 207.6 bbls of Displacement / FCP 700 PSI and took to 1319 PSI
17	Check Floats	4/26/2022	05:03					Check Floats / Floats Held 1.5 bbls back
18	Rig Down Iron	4/26/2022	05:20					AC Crew Rigs Down Iron and Equipment
19	Depart Location	4/26/2022	07:20					AC Crew Departs Location

Pump Diagrams

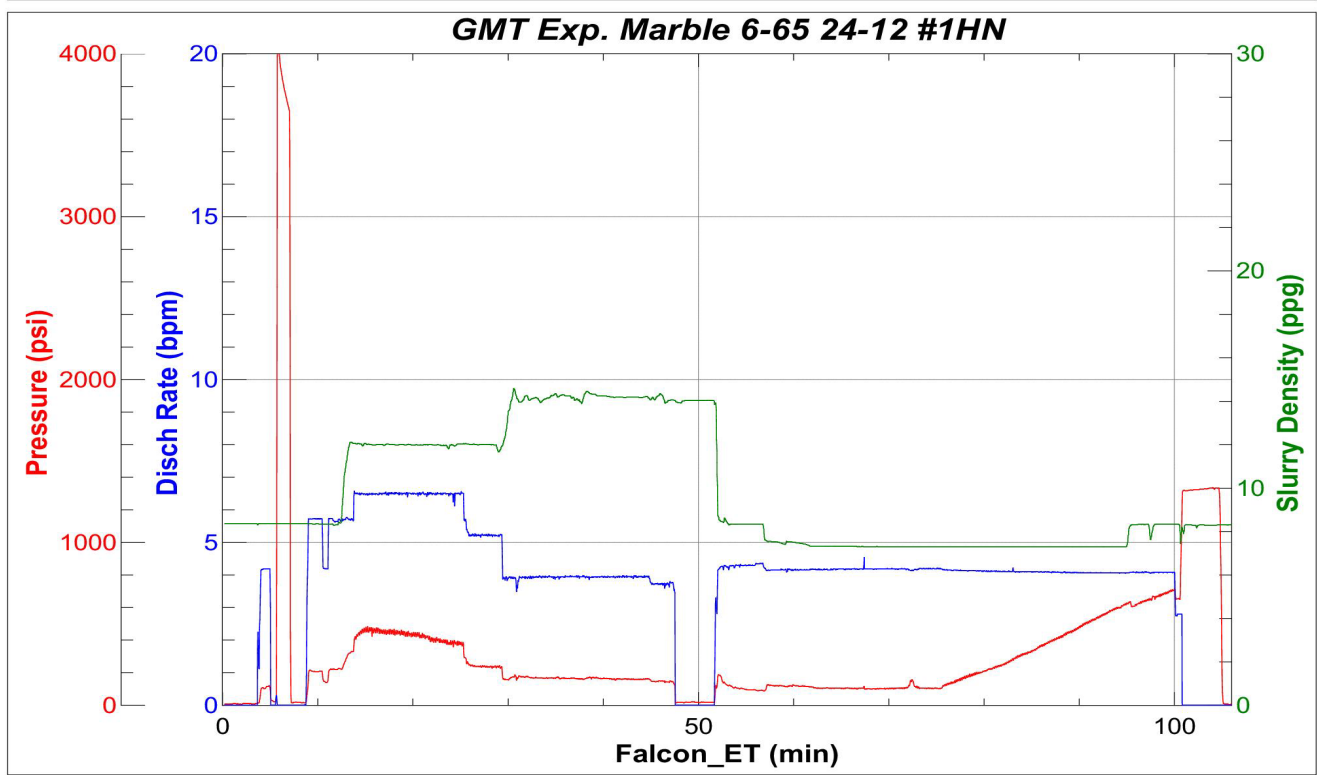


JobMaster Program Version 5.01C1

Job Number: 81181

Customer: GMT Exp.

Well Name: Marble 6-65 24-12 #1HN



BJ Services

Job Start: Tuesday, April 26, 2022