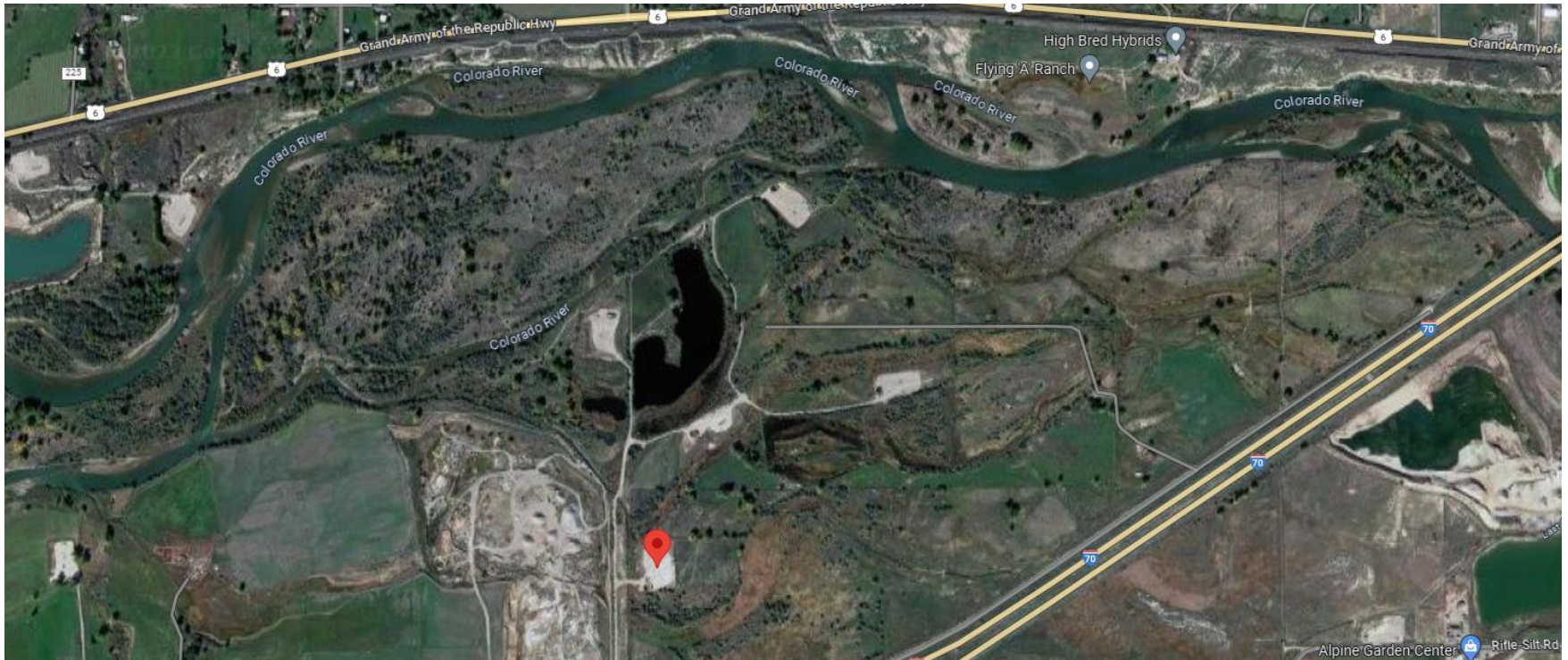


**Storm Water Management and Erosion control**  
**Location Name: TEP ROCKY MOUNTAIN LLC ROBINSON A Pad**  
**Location #: 336015**



**Location Overview: Location is within a 411a Surface Water External Buffer, approximately 642 yards from the Colorado River & is in close proximity to National Wetlands Inventory area. Location is within High Priority/Density/Black Bear Habitat areas.**

**Section/Township/Range: 8 6S92W**



**Storm water Management and Erosion control**  
**Location Name: TEP ROCKY MOUNTAIN LLC ROBINSON A Pad**  
**Location #: 336015**



**North West corner of location.**



**North East corner of location.**



**South West corner of location.**



**South East corner of location.**



**Storm water Management and Erosion control**  
**Location Name: TEP ROCKY MOUNTAIN LLC ROBINSON A Pad**  
**Location #: 336015**



**Photo # 502 From inspection 708900775 conducted on 06/15/2023 Berm needs maintenance – erosion through berm & transport of sediment off location**



**Photo # 4161 Berm needs maintenance - erosion through berm & transport of sediment off location**



**Storm water Management and Erosion control**  
**Location Name: TEP ROCKY MOUNTAIN LLC ROBINSON A Pad**  
**Location #: 336015**



**Photo # 503 From inspection 708900775 conducted on 06/15/2023 Berm needs maintenance – erosion through berm & transport of sediment off location**



**Photo # 4162 Berm needs maintenance - erosion through berm & transport of sediment off location**



**Storm water Management and Erosion control**  
**Location Name: TEP ROCKY MOUNTAIN LLC ROBINSON A Pad**  
**Location #: 336015**



**Photo # 510 From inspection 708900775 conducted on 06/15/2023 Berm needs maintenance – erosion through berm & transport of sediment off location**



**Photo # 4164 Berm needs maintenance - erosion through berm & transport of sediment off location**

**Storm water Management and Erosion control**  
**Location Name: TEP ROCKY MOUNTAIN LLC ROBINSON A Pad**  
**Location #: 336015**



**Photo # 4169 Berm needs maintenance – erosion through berm & transport of sediment off location/Failure to minimize erosion & transport of sediment off location**