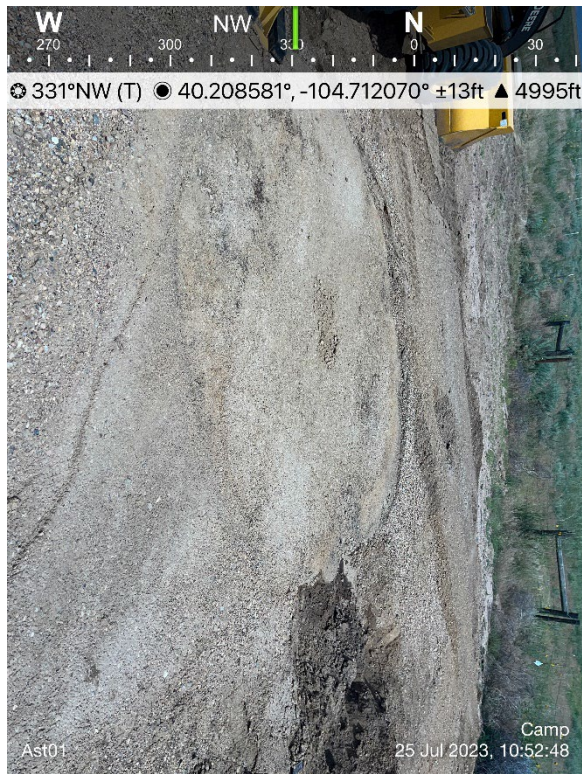


PHOTO LOG  
CAMP H 30-29D O SA FACILITY  
WELD COUNTY, COLORADO  
KERR-MCGEE OIL & GAS ONSHORE, LP



AST 02 Excavation



AST01 Footprint

PHOTO LOG  
CAMP H 30-29D O SA FACILITY  
WELD COUNTY, COLORADO  
KERR-MCGEE OIL & GAS ONSHORE, LP



Separator Outlet



Separator Inlet

PHOTO LOG  
CAMP H 30-29D O SA FACILITY  
WELD COUNTY, COLORADO  
KERR-MCGEE OIL & GAS ONSHORE, LP



Emissions Control Device (ECD) Footprint



Meterhouse

PHOTO LOG  
CAMP H 30-29D O SA FACILITY  
WELD COUNTY, COLORADO  
KERR-MCGEE OIL & GAS ONSHORE, LP



Produced Water Vessel (PWV) Excavation  
Rainwater Present in Excavation



AST01 Footprint

PHOTO LOG  
CAMP H 30-29D O SA FACILITY  
WELD COUNTY, COLORADO  
KERR-MCGEE OIL & GAS ONSHORE, LP



AST02 Footprint



Background Sample Location