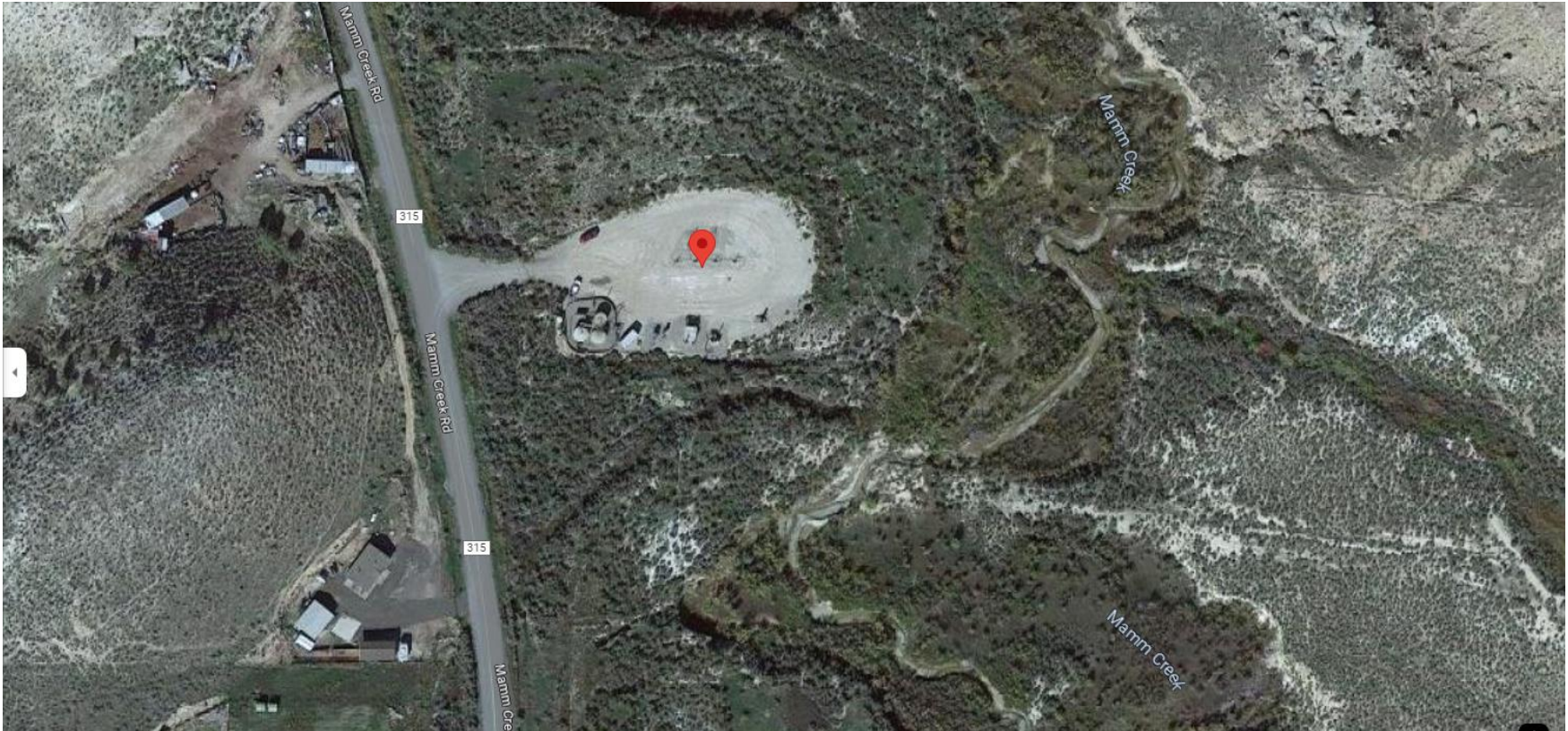


**Storm Water Management and Erosion control**  
**Location Name: CAERUS PICEANCE LLC O29NE Pad**  
**Location #: 335085**



**Location Overview: Location is approximately 56 yards from  
Mamm Creek. Location is within High  
Priority/Density/NSO/Black Bear Habitat areas.  
Section/Township/Range: 29 6S92W**





**Storm water Management and Erosion control**  
**Location Name: CAERUS PICEANCE LLC O29NE Pad**  
**Location #: 335085**



**North West corner of location.**



**North East corner of location.**



**South West corner of location.**



**South East corner of location.**

