

**Gadeco LLC**  
**Hiawatha State 2-36**  
**Loc ID: 313297**



**Sign at intersection of access and lease road**



**Access road to location**



**Gadeco LLC  
Hiawatha State 2-36  
Loc ID: 313297**



**Lease road**



**Unmarked anchor**



**Gadeco LLC**  
**Hiawatha State 2-36**  
**Loc ID: 313297**



**Stained soil**



**Debris**



**Gadeco LLC**  
**Hiawatha State 2-36**  
**Loc ID: 313297**



**Stained soils**



**Debris**



**Gadeco LLC**  
**Hiawatha State 2-36**  
**Loc ID: 313297**



**Unused equipment**



**Stained soil**



**Gadeco LLC  
Hiawatha State 2-36  
Loc ID: 313297**



**Debris and stained soil**



**Oily waste covering tank and on the ground**



Gadeco LLC  
Hiawatha State 2-36  
Loc ID: 313297



**Open end loadline**



**Open loadline**



Gadeco LLC  
Hiawatha State 2-36  
Loc ID: 313297



Tank missing required information



Debris and stained soil



**Gadeco LLC**  
**Hiawatha State 2-36**  
**Loc ID: 313297**



**Tank battery sign missing required information**



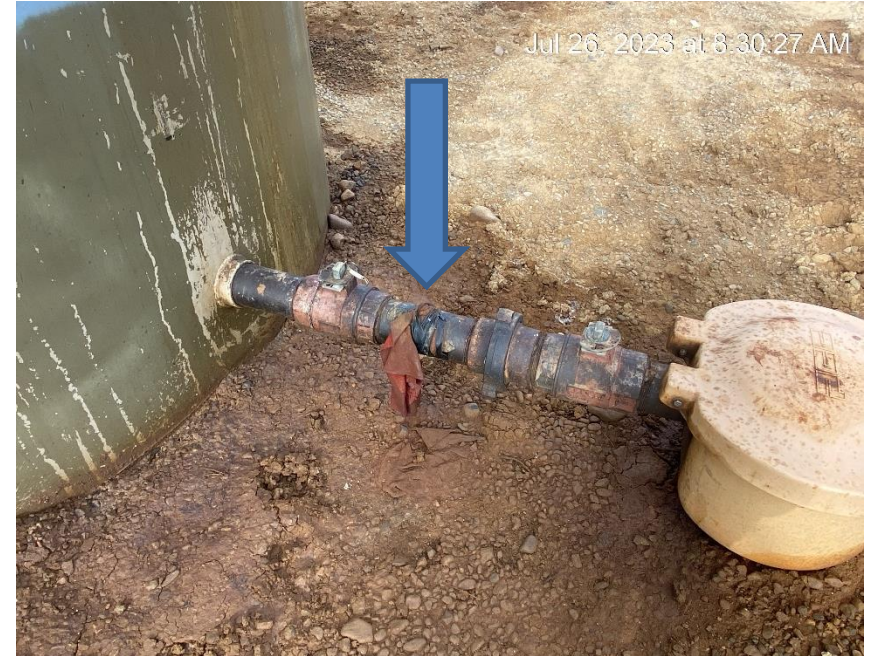
**Debris, oily waste and stained soil**



Gadeco LLC  
Hiawatha State 2-36  
Loc ID: 313297



Open end loadline



No plug in loadline



**Gadeco LLC**  
**Hiawatha State 2-36**  
**Loc ID: 313297**



**Open end loadline and full of oil**



**Tank missing required information**



**Gadeco LLC**  
**Hiawatha State 2-36**  
**Loc ID: 313297**



**Tank missing required information**



**Tank not labeled**



**Gadeco LLC**  
**Hiawatha State 2-36**  
**Loc ID: 313297**



**Sign at wellhead missing required information**



**Debris**





Gadeco LLC  
Hiawatha State 2-36  
Loc ID: 313297



Illegible chemical label



Bradenhead not visible or accessible



Gadeco LLC  
Hiawatha State 2-36  
Loc ID: 313297



**Debris**



**Unused equipment**



**Gadeco LLC**  
**Hiawatha State 2-36**  
**Loc ID: 313297**



**Leaking equipment and stained soil**



**Debris and stained soil**



**Gadeco LLC  
Hiawatha State 2-36  
Loc ID: 313297**



**Leaking equipment**



**Stained equipment and soil**



**Gadeco LLC**  
**Hiawatha State 2-36**  
**Loc ID: 313297**



**Stained soil and debris**



**Stained soil**



**Gadeco LLC**  
**Hiawatha State 2-36**  
**Loc ID: 313297**



**Debris**



**Stained soils**



Gadeco LLC  
Hiawatha State 2-36  
Loc ID: 313297



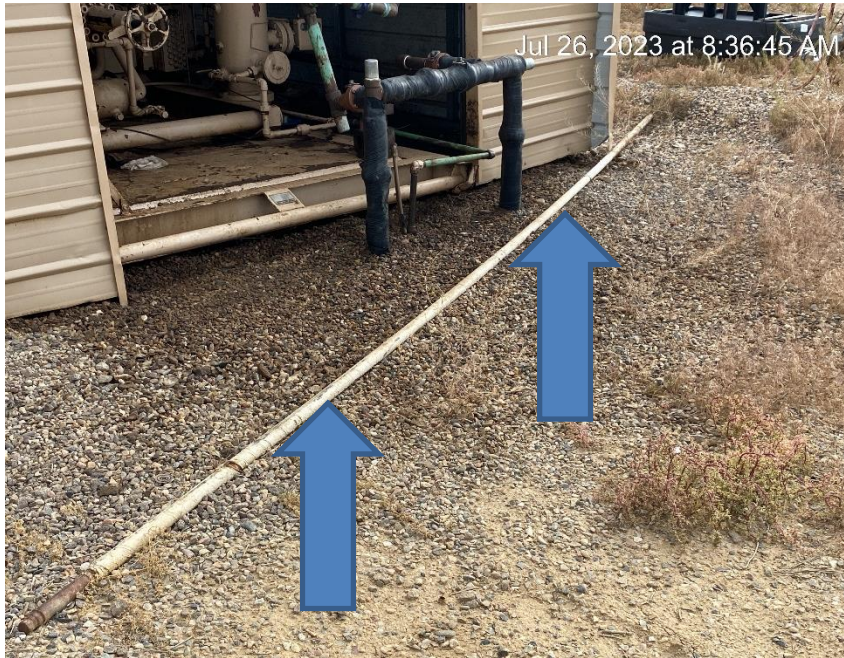
Debris



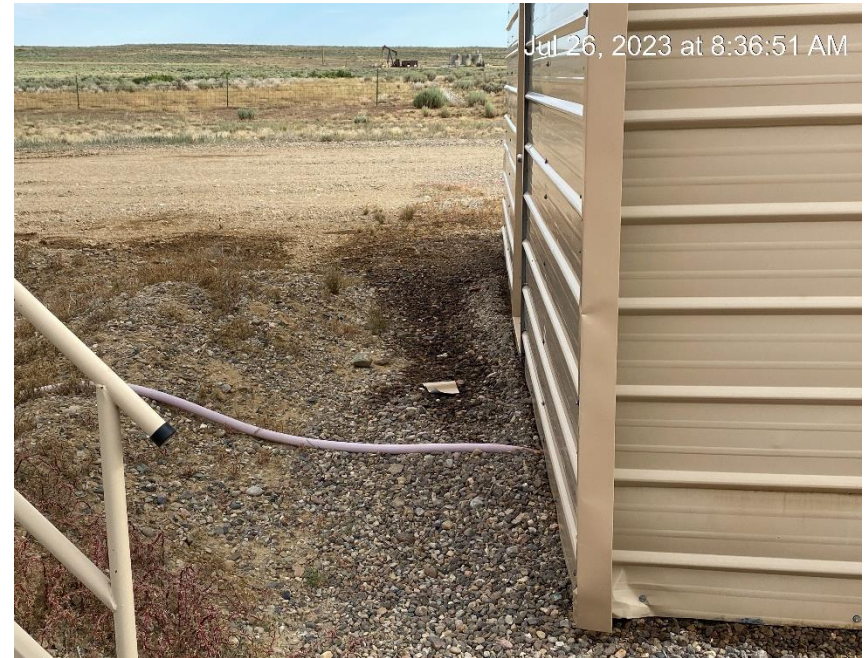
Debris



Gadeco LLC  
Hiawatha State 2-36  
Loc ID: 313297



**Unused equipment**



**Stained soil**



**Gadeco LLC**  
**Hiawatha State 2-36**  
**Loc ID: 313297**



**Stained soils**



**Stained soil**



Gadeco LLC  
Hiawatha State 2-36  
Loc ID: 313297



Debris



Debris



**Gadeco LLC**  
**Hiawatha State 2-36**  
**Loc ID: 313297**



**Stained soil**



**Sediment migration from location**



**Gadeco LLC**  
**Hiawatha State 2-36**  
**Loc ID: 313297**



**Sediment migration leaving location**



**Erosion off location**



**Gadeco LLC**  
**Hiawatha State 2-36**  
**Loc ID: 313297**



**Debris**



**Unused equipment**



**Gadeco LLC  
Hiawatha State 2-36  
Loc ID: 313297**



**Illegible chemical labels**



**Staining**



**Gadeco LLC**  
**Hiawatha State 2-36**  
**Loc ID: 313297**



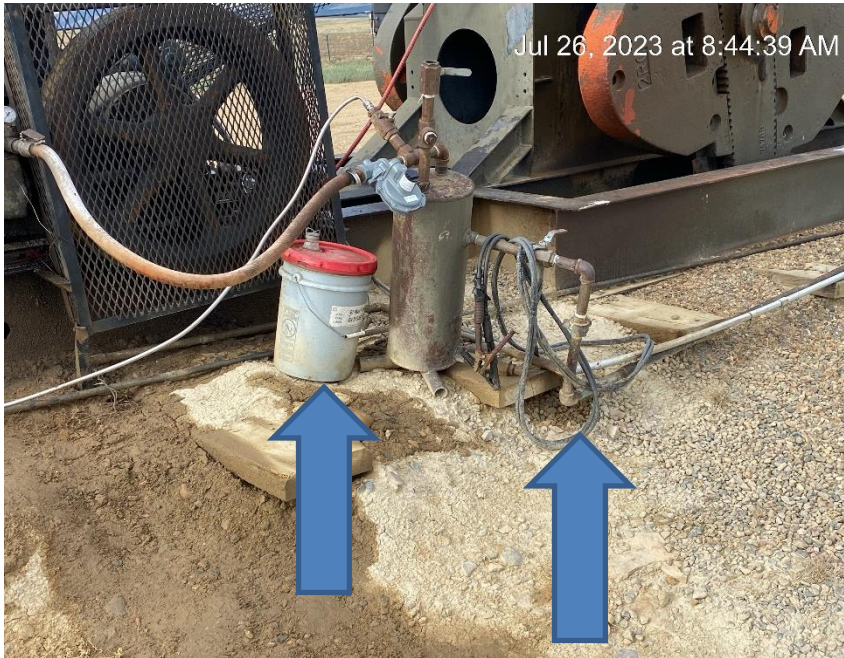
**No wildlife protection**



**Stained soil**



Gadeco LLC  
Hiawatha State 2-36  
Loc ID: 313297



Debris



Stained soil around wellhead



**Gadeco LLC**  
**Hiawatha State 2-36**  
**Loc ID: 313297**



**Soil staining and weeds**



**Weeds**



**Gadeco LLC**  
**Hiawatha State 2-36**  
**Loc ID: 313297**



**Weed growth**



**Weeds partially sprayed**



Gadeco LLC  
Hiawatha State 2-36  
Loc ID: 313297



Debris



Debris and oil around compressor



Gadeco LLC  
Hiawatha State 2-36  
Loc ID: 313297



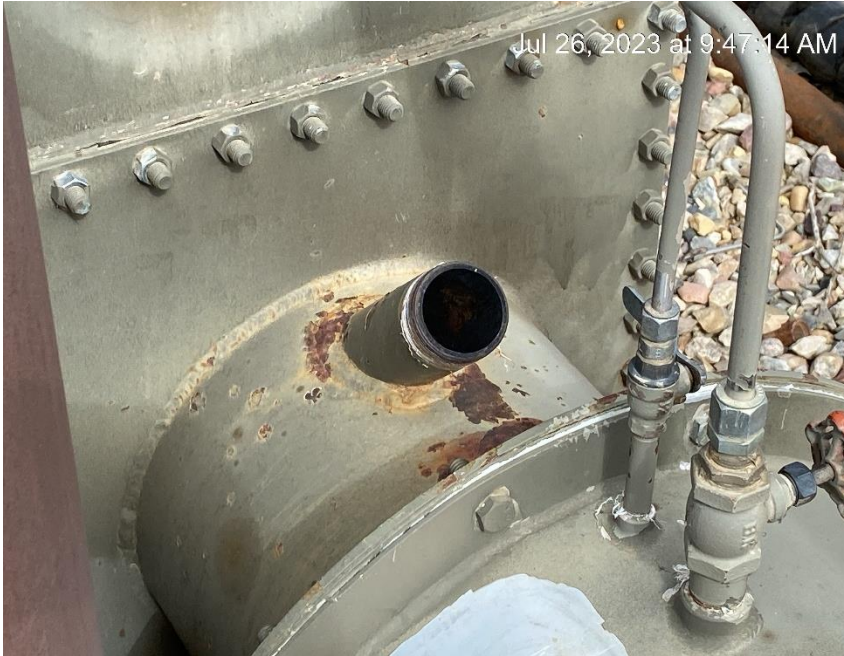
Debris



Debris



**Gadeco LLC**  
**Hiawatha State 2-36**  
**Loc ID: 313297**



**Open to wildlife**



**Soil stain between pumping unit and separator**



**Gadeco LLC**  
**Hiawatha State 2-36**  
**Loc ID: 313297**



**Location view from Southwest corner**



**Location view from Southeast corner**



**Gadeco LLC**  
**Hiawatha State 2-36**  
**Loc ID: 313297**



**Location view from Northeast corner**



**Location view from Northwest corner**