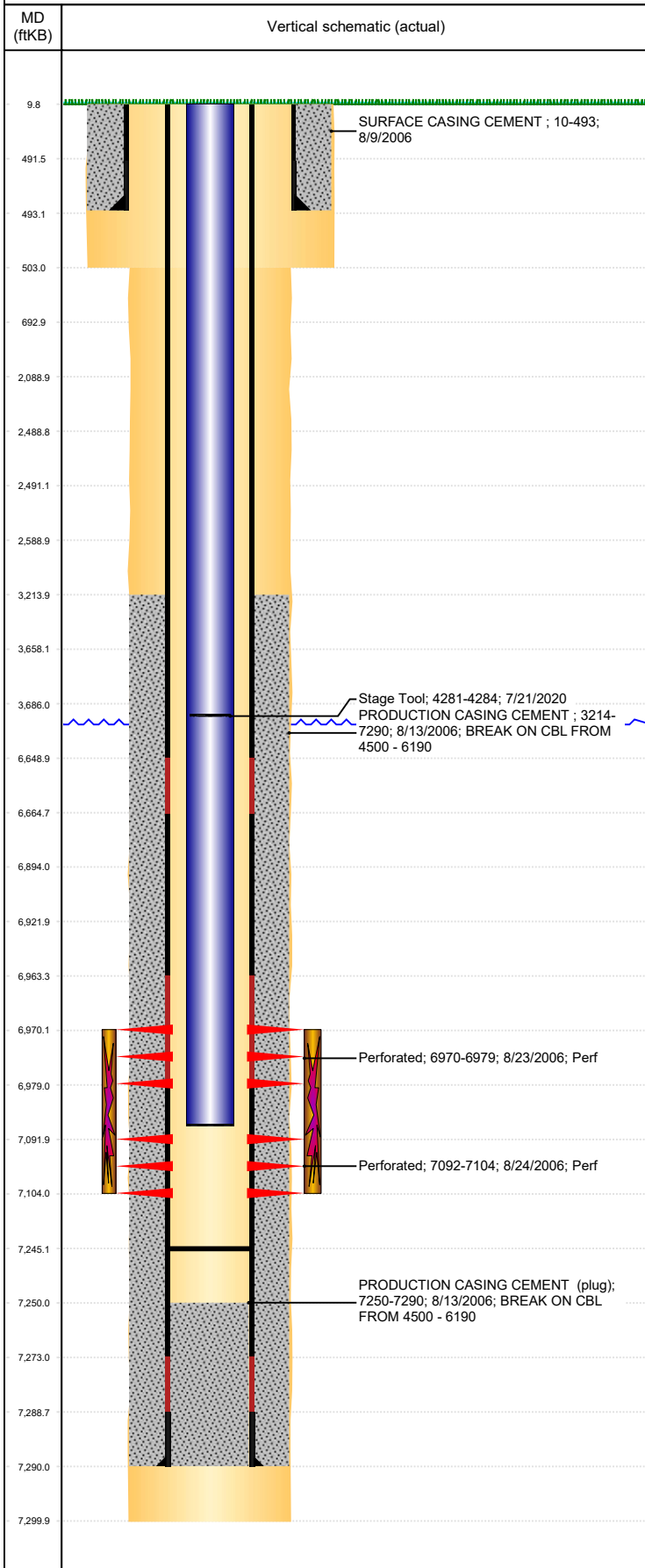




P&A Wellbore For State

Well Name: IRVINE 2-11

Land, Original Hole, 7/25/2023 12:31:29 PM



Well Header									
Surface UWI 0512324076			Business Unit Rockies			Gov Auth Dist		Prod Tree Loc Land	
Orig. KB to Gnd (ft) 10.00		Original Spud Date 8/8/2006		Abandon Date		Well Sub-Status PR			High... N
Comment LIMITED ENTYR. # OF JTS UNKNOWN FOR SURFACE CSG. STAGE TOOLS @ 4110', 4218', 4249', & 4252'. FIELD OPS NOTICE- FLOWLINES ABANDONED PER RULE 1103, RCVD 6/29/17. STATE SHOWS SHUT IN SINCE JAN 2018.									
Surface Location (Congressional)									
Qtr 3 NE	Qtr 4 NE	Section 2	Twtnshp 6	Twtnsh... N	Range 65	Rng E/... W	Latitude (°) 40.52088	Longitude (°) -104.62247	
Wellbore Sections									
Section Des			Hole Size (in)			Act Top (ftKB)		Act Btm (ftKB)	
SURFACE			12 1/4			10.0		503.0	
PRODUCTION			7 7/8			503.0		7,300.0	
Casing Strings									
Csg Des			Run Date		OD (in)	Wt/Len (lb/ft)	Grade	Top Depth (MD) (ftKB)	Set Depth (MD) (ftKB)
Surface			8/9/2006		8 5/8			10	493
Production Casing			8/13/2006		4 1/2	11.60	LT&C	10	7290
Cement									
Des					Start Date		Top (ftKB)		Btm (ftKB)
SURFACE CASING CEMENT					8/9/2006		10.0		493.0
PRODUCTION CASING CEMENT					8/13/2006		3,214.0		7,290.0
Zone Statuses									
Zone Name		Status Date	Status	Fluid Type	Job				Prod Method
NIOBRARA		2/6/2007	PR	Water	DRILLING/COMPLETION - ORIGINAL, 8/8/2006...				Flowing Flowing Flowing
NIOBRARA		10/11/2011	PR						
CODELL		10/11/2011	PR						
CODELL		1/5/2016	PR						
NIOBRARA-CO...		10/11/2011	PR						
Perforation Data									
Linked Zone			Explosive Type	Entered Shot Total	Top (ftKB)		Btm (ftKB)		Date
NIOBRARA, Original Hole			B	18	6,970.0		6,979.0		8/23/2006
CODELL, Original Hole				48	7,092.0		7,104.0		8/24/2006
Stimulation Intervals									
Zone				Start Date		Top (ftKB)		Btm (ftKB)	
NIOBRARA-CODELL, Original Hole				8/24/2006		6,970.0		7,104.0	
Other In Hole									
Run Date		Des			Make		OD (in)	Top (ftKB)	Btm (ftKB)
Logs									
Date		Type					Depth Top (MD) (ftKB)		Btm (ftKB)
8/13/2006		COMPENSATED DENSITY					3,650		7,277.0
8/13/2006		INDUCTION					493		7,297.0
8/21/2006		CEMENT BOND					3,100		7,247.0
12/19/2013		GYRO					10		7,050.0
Plug Back Total Depths									
Date		Type			Com				PBTD (ftKB)
8/21/2006		FILL			DEPTH LOGGER FROM CBL				7,250
3/19/2007		FILL			CLEAN OUT AND LAND TBG				7,245