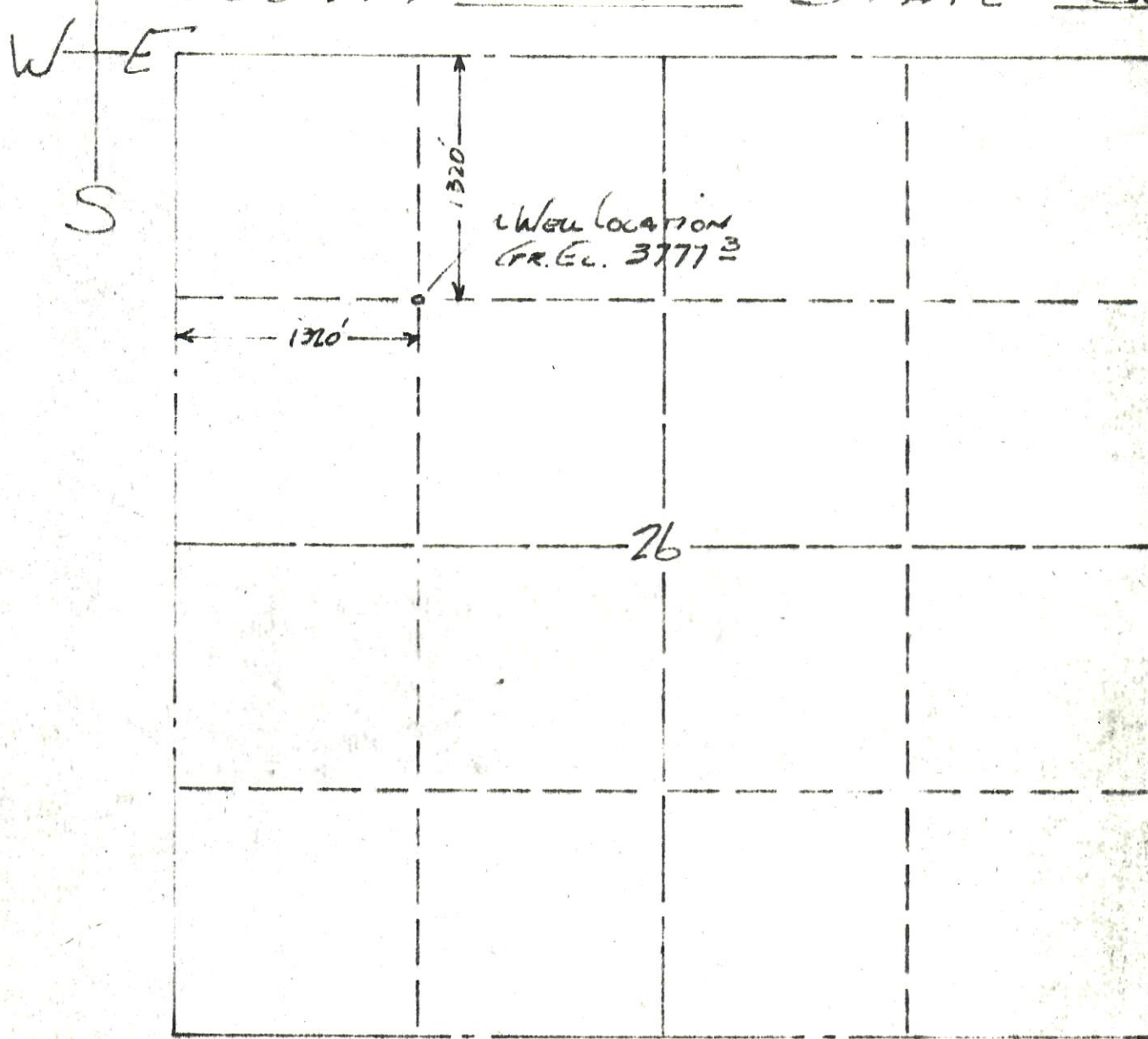


To: PLATT GAS CO., DALLAS, TEXAS
LEASE LOCATION C. 26 T. 33 S., R. 42 W., 6th PM.
WELL NAME HOLMES A - No 1-26 LOCATION Section NW 1/4
COUNTY BACA STATE COLORADO



I, HEREBY CERTIFY THAT THE WELL LOCATION SHOWN ON THE ABOVE PLAT WAS STAKED AND MEASURED AS SHOWN ON THIS PLAT.

DATE 22 - JUNE 1961

RECEIVED
SEP 16 1977

COLORADO GAS CONS. COMM.

Shawn S. Gellner
REGISTERED ENGINEER
LAmpAR, COLORADO