







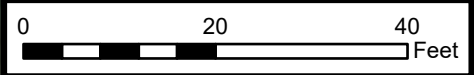
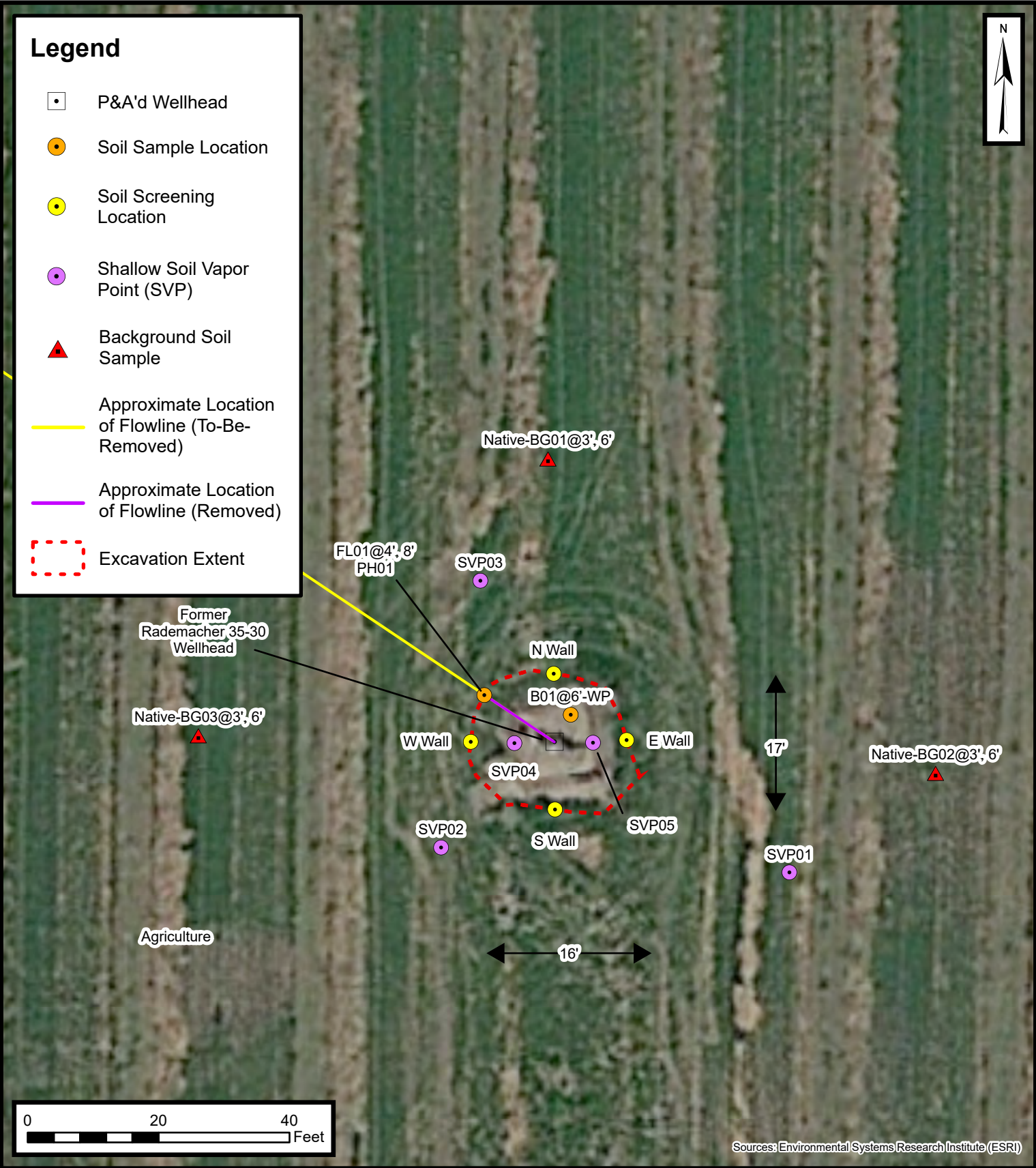


Legend

-  P&A'd Wellhead
-  Soil Sample Location
-  Soil Screening Location
-  Shallow Soil Vapor Point (SVP)
-  Background Soil Sample
-  Approximate Location of Flowline (To-Be-Removed)
-  Approximate Location of Flowline (Removed)
-  Excavation Extent



Sources: Environmental Systems Research Institute (ESRI)

Wellhead Excavation Site Map

Rademacher 35-30 Wellhead
 Kerr-McGee Oil & Gas Onshore, LP
 SESW SEC 30-T3N-R67W
 Weld County, CO

Project Number: 09A1417118



FIGURE
1