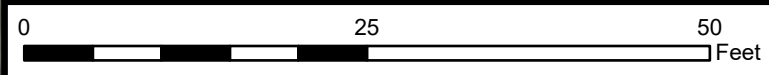
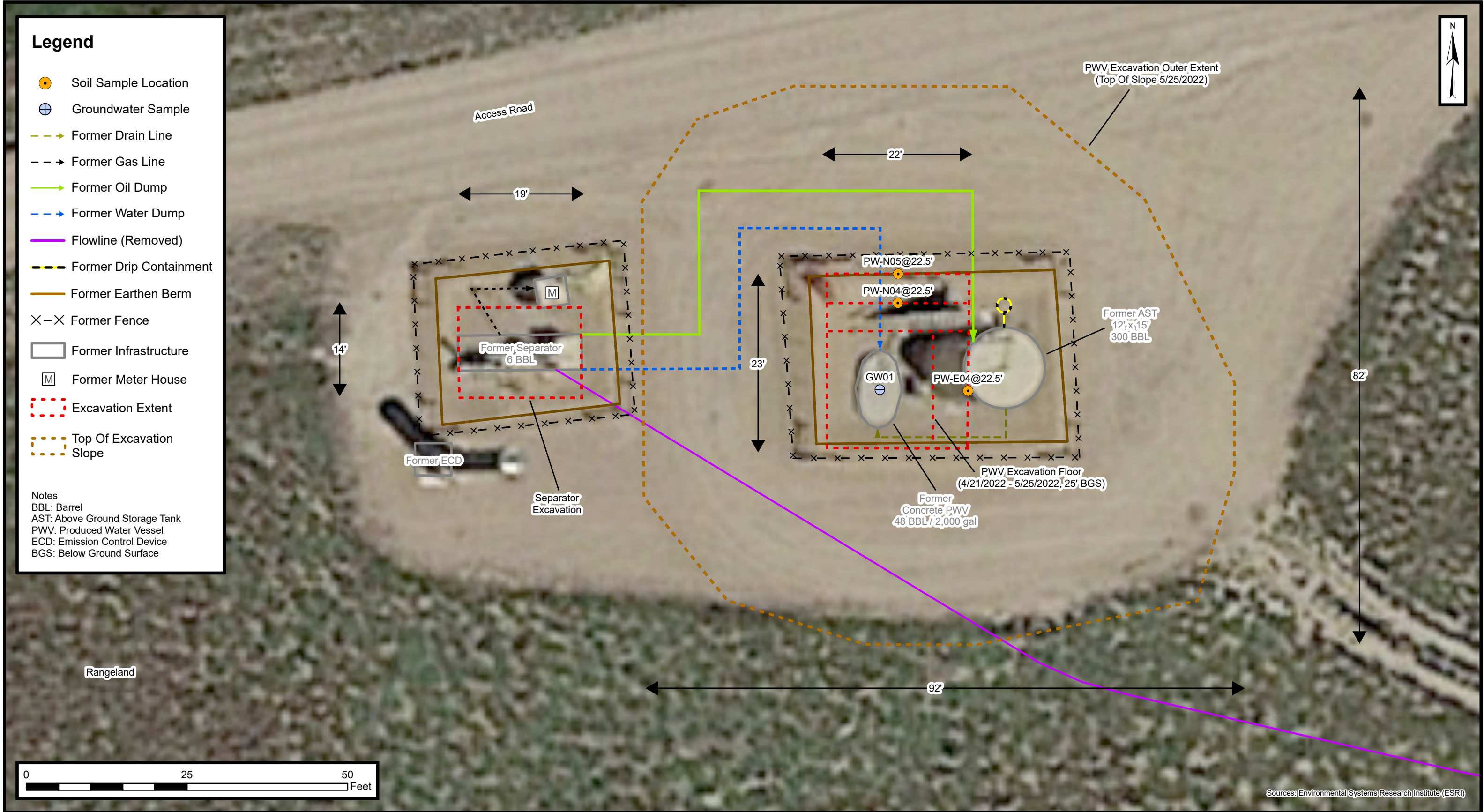


Legend

- Soil Sample Location
- ⊕ Groundwater Sample
- Former Drain Line
- - → Former Gas Line
- Former Oil Dump
- - → Former Water Dump
- Flowline (Removed)
- - - Former Drip Containment
- Former Earthen Berm
- X-X Former Fence
- Former Infrastructure
- Ⓜ Former Meter House
- ⋯ Excavation Extent
- ⋯ Top Of Excavation Slope

Notes
BBL: Barrel
AST: Above Ground Storage Tank
PWV: Produced Water Vessel
ECD: Emission Control Device
BGS: Below Ground Surface



Sources: Environmental Systems Research Institute (ESRI)

Excavation Site Map (4/21/2022 - 5/25/2022)

Houston 17-7L, 17-8L O SA Facility
Kerr-McGee Oil & Gas Onshore, LP
SENE SEC 17-T3N-R67W
Weld County, CO
Project Number: 09A1417087



FIGURE
1C