

Storm Water Management and Erosion control
Location Name: TEP ROCKY MOUNTAIN LLC DOE FED 9-17 MV Pad
Location ID: 335134



Location Overview: Drainage contributes to the Colorado River. Location is within High Priority/Density Habitat areas.
Section/Township/Range: 17 6S94W



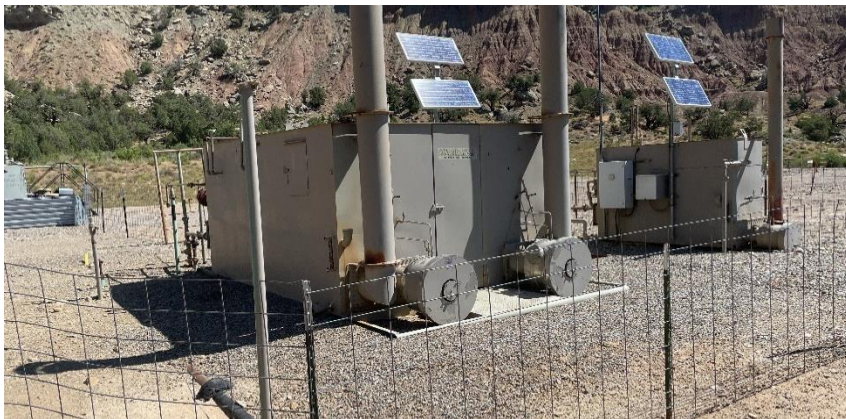
Storm water Management and Erosion control
Location Name: TEP ROCKY MOUNTAIN LLC DOE FED 9-17 MV Pad
Location ID: 335134



North West corner of location.



North East corner of location.



South West corner of location.



South East corner of location.



Storm water Management and Erosion control
Location Name: TEP ROCKY MOUNTAIN LLC DOE FED 9-17 MV Pad
Location ID: 335134



Photo # 3636 Erosion/Tunnel erosion (S/SW corner of location behind production units)



Photo # 3637 Erosion/Tunnel erosion (S/SW corner of location behind production units)

Storm water Management and Erosion control
Location Name: TEP ROCKY MOUNTAIN LLC DOE FED 9-17 MV Pad
Location ID: 335134



Photo # 3640 Wattles need maintenance - ditch has eroded & wattles have fallen into ditch (SW corner of location behind production units)



Photo # 3651 Erosion & transport of sediment (S/SE area of location near culvert)

Storm water Management and Erosion control
Location Name: TEP ROCKY MOUNTAIN LLC DOE FED 9-17 MV Pad
Location ID: 335134



Photo # 3652 Erosion & transport of sediment (S/SE area of location near culvert)



Photo # 3658 Erosion & transport of sediment (S/SE area of location near culvert)

Storm water Management and Erosion control
Location Name: TEP ROCKY MOUNTAIN LLC DOE FED 9-17 MV Pad
Location ID: 335134



Photo # 3653 Culvert needs maintenance - Culvert appears to have sediment & trash built up on one end which is reducing culvert capacity. (culvert is near entrance to location)



Photo # 3654 Culvert needs maintenance - Culvert appears to have sediment & trash built up on one end which is reducing culvert capacity. (culvert is near entrance to location)