

Inspection Photos

7/20/2023

Operator: CAERUS PICEANCE LLC #10456

Location Number: 478266

Garfield County, CO

Aaron Trujillo
NW Reclamation Specialist
CECMC



COLORADO

**Energy & Carbon Management
Commission**

Department of Natural Resources

Colorado Oil and Gas Conservation Commission

BJU/M23A-496 Pad, #478266

Annotation Report












Created on July 21, 2023

Captured on July 20, 2023







Location

NAD83(2011) / Colorado North (ftUS) (US survey foot)

Label	Title	Elevation	Lat, Long	Northing, Easting
1 	Stained soils	-40.17 US ft	39.6844847, -108.1404187	1138977.3 US ft, 2256964.7 US ft
2 	Vehicle tracking control not in proper functioning condition	-42.42 US ft	39.6833566, -108.1412985	1138573.9 US ft, 2256705.0 US ft
3 	Culvert with armored outlet	-41.14 US ft	39.6831750, -108.1412845	1138507.7 US ft, 2256707.0 US ft
4 	Culvert	-42.33 US ft	39.6833690, -108.1412470	1138578.0 US ft, 2256719.6 US ft
5 	Armor Channel	-39.64 US ft	39.6846211, -108.1398369	1139022.1 US ft, 2257129.9 US ft
6 	Drain pipes	-37.53 US ft	39.6849275, -108.1403229	1139137.7 US ft, 2256996.5 US ft
7 	Velocity Checks	-78.89 US ft	39.6843020, -108.1416343	1138921.0 US ft, 2256620.8 US ft
8 	Cut slope	-27.82 US ft	39.6831935, -108.1403860	1138506.9 US ft, 2256959.9 US ft
9 	Fill slopes	-84.03 US ft	39.6851834, -108.1412711	1139238.9 US ft, 2256732.5 US ft

Area

Label	Title	Horizontal Length	Horizontal Width	Area	Surface Area
10 	Location Disturbance Area	--	--	11.19 acres	13.51 acres
11 	Spill	--	--	5638.44 ft ²	7069.91 ft ²
12 	Improper cuttings management	--	--	0.45 acres	0.54 acres
13 	Improper materials management	--	--	4417.84 ft ²	7417.92 ft ²
14 	Stained Soils	--	--	3630.94 ft ²	5266.61 ft ²
15 	Working Pad Surface	--	--	4.98 acres	6.50 acres

Volume ▲

Label	Title	Area	Cut	Fill	Net	Tolerance
16 ●	Sediment Trap #1	5916.31 ft ²	1074.31 y ³	0.14 y ³	-1074.17 y ³	0 ft
17 ●	Sediment Trap #2	1524.40 ft ²	3.74 y ³	69.71 y ³	65.96 y ³	0 ft
18 ●	Sediment Trap #3 w/ ditch	4373.41 ft ²	23.02 y ³	307.40 y ³	284.38 y ³	0 ft
19 ●	Southern Topsoil Stockpile	0.37 acres	3273.44 y ³	54.71 y ³	-3218.73 y ³	0 ft
20 ●	Southwest Topsoil Stockpile	6308.82 ft ²	1041.20 y ³	7.31 y ³	-1033.90 y ³	0 ft
21 ●	Western Perimeter Topsoil s	1.57 acres	13987.93 y ³	947.67 y ³	-13040.26 y ³	0 ft
22 ●	Northeast Topsoil Stockpile	0.38 acres	2514.06 y ³	375.62 y ³	-2138.44 y ³	0 ft

Colorado Oil and Gas Conservation Commission

BJU/M23A-496 Pad, #478266 Issue Report



Created on July 21, 2023

Captured on July 20, 2023



Type	Count
Missing Part	6
Observation	6

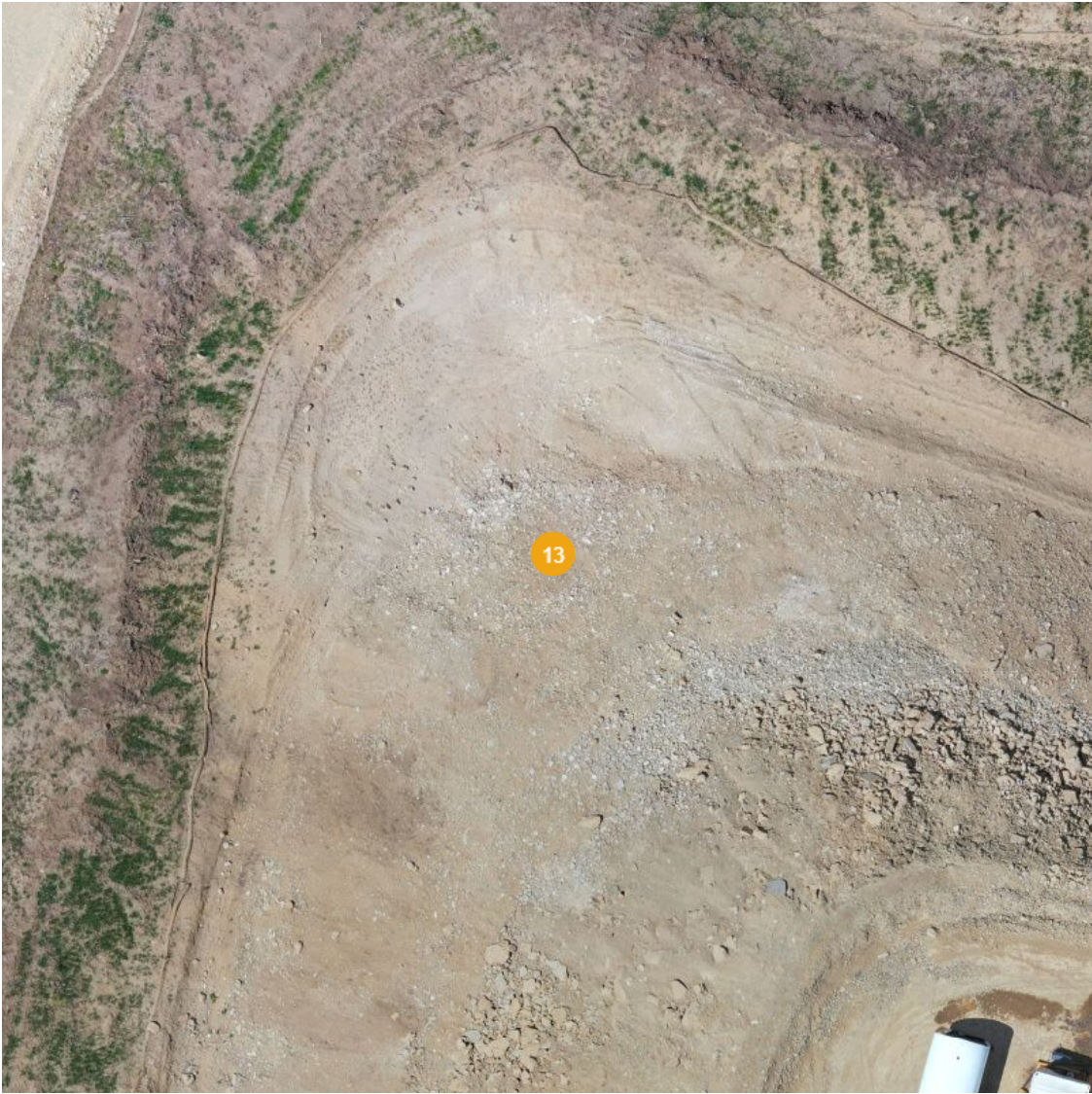
No.	Type	Severity	Created	Status	Cost of Repair
1	 Observation	—	July 21, 2023	Open	—
3	 Observation	—	July 21, 2023	Open	—
4	 Observation	—	July 21, 2023	Open	—
5	 Observation	—	July 21, 2023	Open	—
6	 Observation	—	July 21, 2023	Open	—
7	 Missing Part	—	July 21, 2023	Open	—
8	 Missing Part	—	July 21, 2023	Open	—
9	 Missing Part	—	July 21, 2023	Open	—
10	 Missing Part	—	July 21, 2023	Open	—
11	 Observation	—	July 21, 2023	Open	—
12	 Missing Part	—	July 21, 2023	Open	—
13	 Missing Part	—	July 21, 2023	Open	—

Total: \$0.00

13 - Missing Part

Open

Jul 20, 2023 at 3:26pm



Details

Summary:	Stormwater and Erosion Control Measures are missing or insufficient at the fill slopes of the Location.
Created:	Jul 21, 2023, 4:35pm by Aaron Trujillo
Cost of Repair:	—
Lat/Long:	39.6851834, -108.1412711
Northing:	1139238.9 US ft
Easting:	2256732.5 US ft
Elevation:	-84.03 US ft
NAD83(2011) / Colorado North (ftUS) (US survey foot)	

12 - Missing Part

Open

Jul 20, 2023 at 3:26pm



Details

Summary:	Stormwater and Erosion Control Measures to minimize erosion and degradation are missing or insufficient at the cut slopes of the Location.		
Created:	Jul 21, 2023, 4:34pm by Aaron Trujillo		
Cost of Repair:	—		
Lat/Long:	39.6831935, -108.1403860		
Northing:	1138506.9 US ft		
Easting:	2256959.9 US ft		
Elevation:	-27.82 US ft		
NAD83(2011) / Colorado North (ftUS) (US survey foot)			

Inspection Photos

Operator Name: CAERUS PICEANCE LLC #10456

Location Number: 478266



July 20, 2023



July 20, 2023

Control measures to minimize erosion and degradation missing or insufficient at fill slopes of the Location.



COLORADO

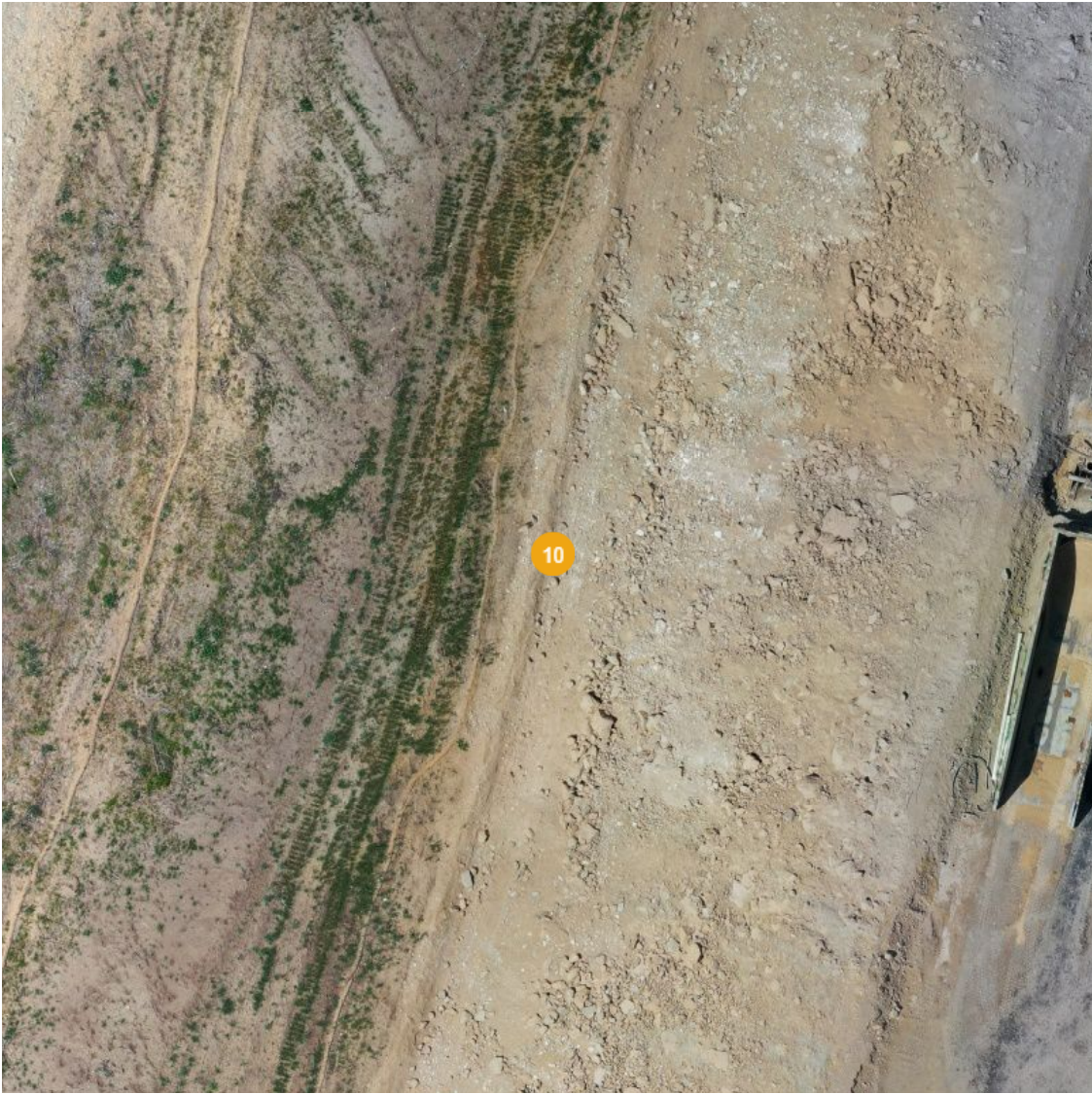
**Energy & Carbon Management
Commission**

Department of Natural Resources

Open

10 - Missing Part

Jul 20, 2023 at 3:26pm



Details

Summary:	"Check dams" as identified within the Location drawing figures as part of the Form 2A Location permit not installed.
Created:	Jul 21, 2023, 12:36pm by Aaron Trujillo
Cost of Repair:	—
Lat/Long:	39.6843020, -108.1416343
Northing:	1138921.0 US ft
Easting:	2256620.8 US ft
Elevation:	-78.89 US ft
NAD83(2011) / Colorado North (ftUS) (US survey foot)	

Open

9 - Missing Part

Jul 20, 2023 at 3:26pm



Details

Summary:	The installation of (2) 6" Flex Pipes in conjunction with an armored channel, as identified within the Location drawing figures as part of the Form 2A Location permit not installed. No engineered outlet to allow stormwater discharge has been installed.		
Created:	Jul 21, 2023, 12:29pm by Aaron Trujillo		
Cost of Repair:	—		
Lat/Long:	39.6849275, -108.1403229		
Northing:	1139137.7 US ft		
Easting:	2256996.5 US ft		
Elevation:	-37.53 US ft		
NAD83(2011) / Colorado North (ftUS) (US survey foot)			

Inspection Photos

Operator Name: CAERUS PICEANCE LLC #10456

Location Number: 478266



Northern Location entrance. Control measures as identified by the permitted “Construction Layout Drawing” not observed.



COLORADO

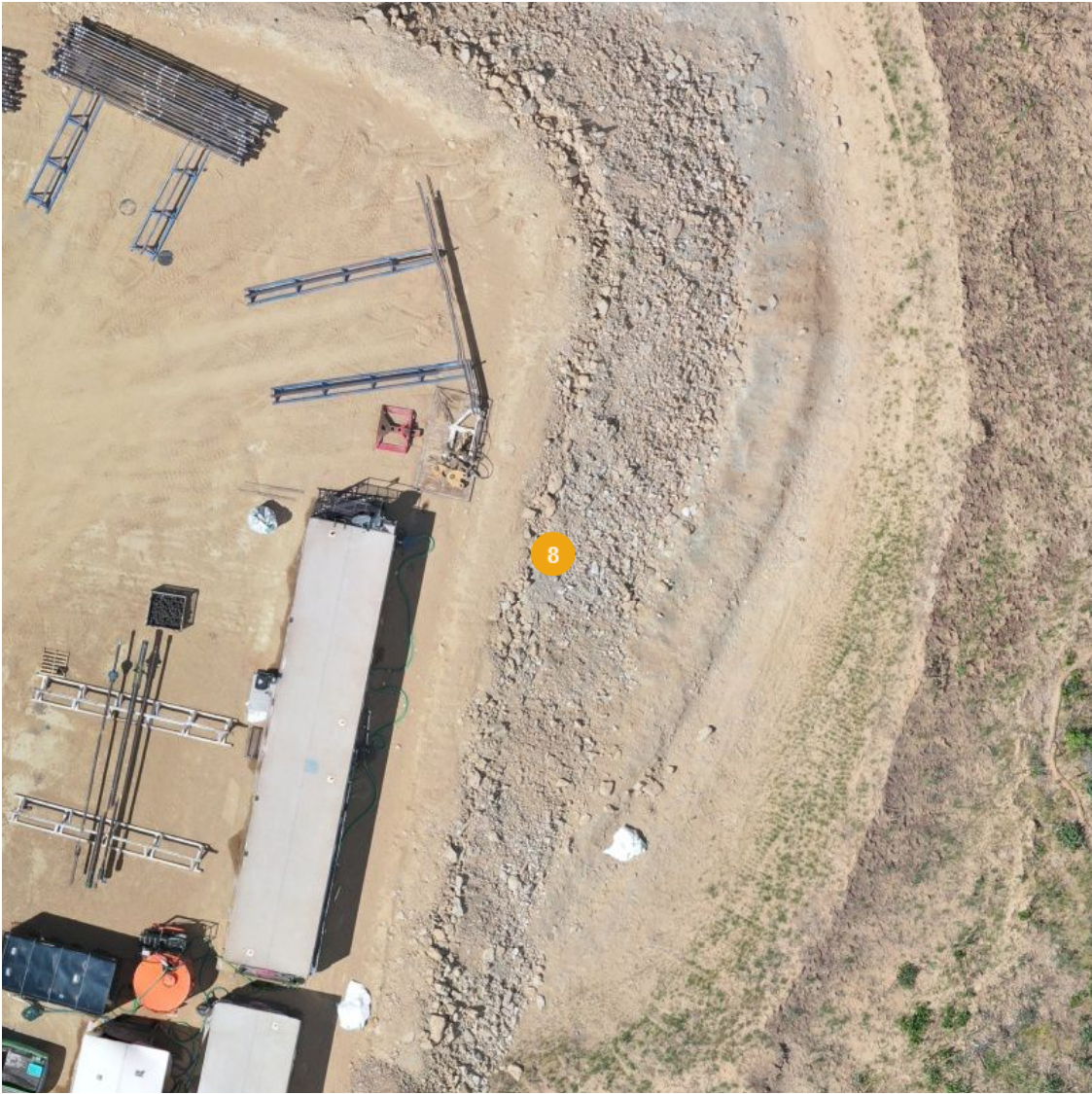
**Energy & Carbon Management
Commission**

Department of Natural Resources

Open

8 - Missing Part

Jul 20, 2023 at 3:26pm



Details

Summary: "Armored Channel" as identified within the Location drawing figures as part of the Form 2A Location permit not installed. No engineered outlet to allow stormwater discharge has been installed.

Created: Jul 21, 2023, 12:26pm by Aaron Trujillo

Cost of Repair: —

Lat/Long: 39.6846211, -108.1398369

Northing: 1139022.1 US ft

Easting: 2257129.9 US ft

Elevation: -39.64 US ft

NAD83(2011) / Colorado North (ftUS) (US survey foot)

Open

7 - Missing Part

Jul 20, 2023 at 3:26pm



Details

Summary: 24" Culvert as identified within the Location drawing figures as part of the Form 2A Location permit not installed. No engineered outlet to allow stormwater discharge has been installed.

Created: Jul 21, 2023, 11:58am by Aaron Trujillo

Cost of Repair: —

Lat/Long: 39.6833690, -108.1412470

Northing: 1138578.0 US ft

Easting: 2256719.6 US ft

Elevation: -42.33 US ft

NAD83(2011) / Colorado North (ftUS) (US survey foot)

Open

11 - Observation

Jul 20, 2023 at 3:26pm



Details

Summary:	Stained soils due to operator power washing equipment.
Created:	Jul 21, 2023, 1:09pm by Aaron Trujillo
Cost of Repair:	—
Lat/Long:	39.68498, -108.14090
Area:	3630.94 ft²
Surface Area:	5266.61 ft²

Open

6 - Observation

Jul 20, 2023 at 3:26pm



Details

Summary:	Tracking pad not in proper functioning. VTC filled w/ sediment; offsite tracking issues apparent.		
Created:	Jul 21, 2023, 11:54am by Aaron Trujillo		
Cost of Repair:			
Lat/Long:			
Northing:	39.6833566, -108.1412985		
Easting:	1138573.9 US ft 2256705.0 US ft		
Elevation:	-42.42 US ft		
NAD83(2011) / Colorado North (ftUS) (US survey foot)			

Inspection Photos

Operator Name: CAERUS PICEANCE LLC #10456

Location Number: 478266



July 20, 2023



July 20, 2023

Vehicle tracking pad on the south end of the Location does not appear to have been installed in accordance with good engineering practices, or maintained in proper functioning condition; control measure no longer adequate.



COLORADO

**Energy & Carbon Management
Commission**

Department of Natural Resources

Open

5 - Observation

Jul 20, 2023 at 3:26pm



Details

Summary:	Materials observed improperly covered. Material spills observed on pad surface.
Created:	Jul 21, 2023, 11:53am by Aaron Trujillo
Cost of Repair:	—
Lat/Long:	39.68372, -108.14153
Area:	4417.84 ft²
Surface Area:	7417.92 ft²

Inspection Photos

Operator Name: CAERUS PICEANCE LLC #10456

Location Number: 478266



Photos example showing improperly covered materials.



COLORADO

**Energy & Carbon Management
Commission**

Department of Natural Resources

Inspection Photos

Operator Name: CAERUS PICEANCE LLC #10456

Location Number: 478266



July 20, 2023



July 20, 2023

Photos examples showing material spills onto the working pad surface.



COLORADO

**Energy & Carbon Management
Commission**

Department of Natural Resources

Inspection Photos
Operator Name: CAERUS PICEANCE LLC #10456
Location Number: 478266



Photo example showing material spills onto the working pad surface.



COLORADO

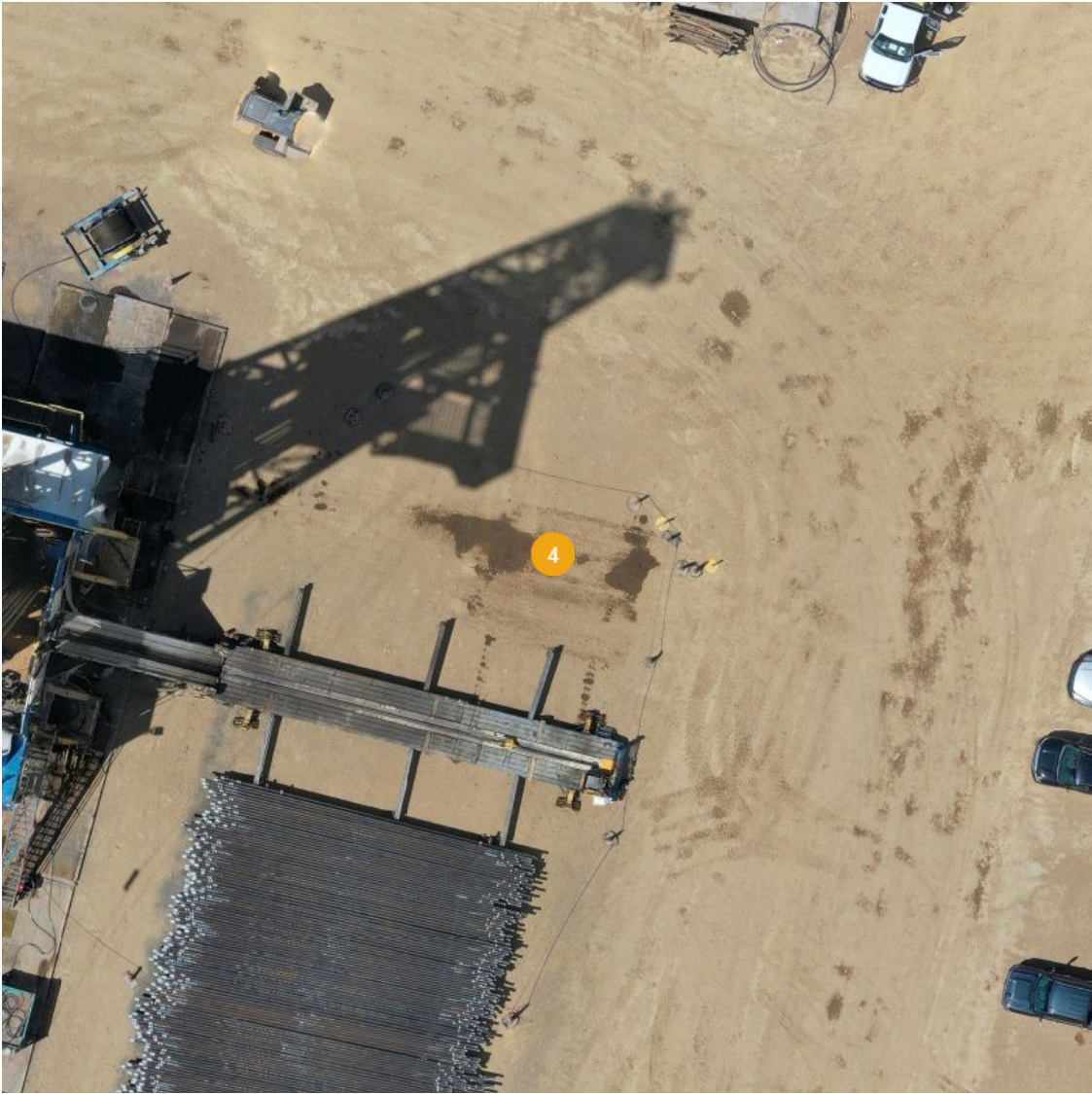
**Energy & Carbon Management
Commission**

Department of Natural Resources

Open

4 - Observation

Jul 20, 2023 at 3:26pm



Details

Summary:	Example of stained soils around rig/drill equipment.
Created:	Jul 21, 2023, 11:53am by Aaron Trujillo
Cost of Repair:	—
Lat/Long:	39.6844847, -108.1404187
Northing:	1138977.3 US ft
Easting:	2256964.7 US ft
Elevation:	-40.17 US ft
NAD83(2011) / Colorado North (ftUS) (US survey foot)	

Open

3 - Observation

Jul 20, 2023 at 3:26pm



Details

Summary:	Cuttings material observed spread out over the western/southwestern pad surface. Evidence of cuttings being tracked out via vehicle traffic.
Created:	Jul 21, 2023, 11:51am by Aaron Trujillo
Cost of Repair:	—
Lat/Long:	39.68401, -108.14131
Area:	0.45 acres
Surface Area:	0.54 acres

Open

1 - Observation

Jul 20, 2023 at 3:26pm



Details

Summary:	Unknown material spilled onto fill slope areas on the west end of the Location.
Created:	Jul 21, 2023, 11:39am by Aaron Trujillo
Cost of Repair:	—
Lat/Long:	39.68459, -108.14141
Area:	5638.44 ft²
Surface Area:	7069.91 ft²

Inspection Photos

Operator Name: CAERUS PICEANCE LLC #10456

Location Number: 478266



Photos show drill cutting material spilled onto the western working pad surface and tracked.



COLORADO

**Energy & Carbon Management
Commission**

Department of Natural Resources

Inspection Photos

Operator Name: CAERUS PICEANCE LLC #10456

Location Number: 478266



July 20, 2023



July 20, 2023

Photos show drill cutting material spilled onto the western working pad surface and tracked.



COLORADO

**Energy & Carbon Management
Commission**

Department of Natural Resources

Inspection Photos

Operator Name: CAERUS PICEANCE LLC #10456

Location Number: 478266



Photos show drill cutting material spilled onto the western working pad surface and tracked.



COLORADO

**Energy & Carbon Management
Commission**

Department of Natural Resources

Inspection Photos

Operator Name: CAERUS PICEANCE LLC #10456

Location Number: 478266



July 20, 2023

Photo shows Operator has spilled an unknown material onto the western fill slope of the location.



COLORADO

**Energy & Carbon Management
Commission**

Department of Natural Resources



Aerial image showing spill on the fill slope (red arrow), and the drill cuttings spilled onto the working pad surface, and tracked (yellow arrows)

Inspection Photos
Operator Name: CAERUS PICEANCE LLC #10456
Location Number: 478266



Porta-johns not secured; BMPs to prevent, or contain a spill missing or insufficient at porta-johns.



COLORADO

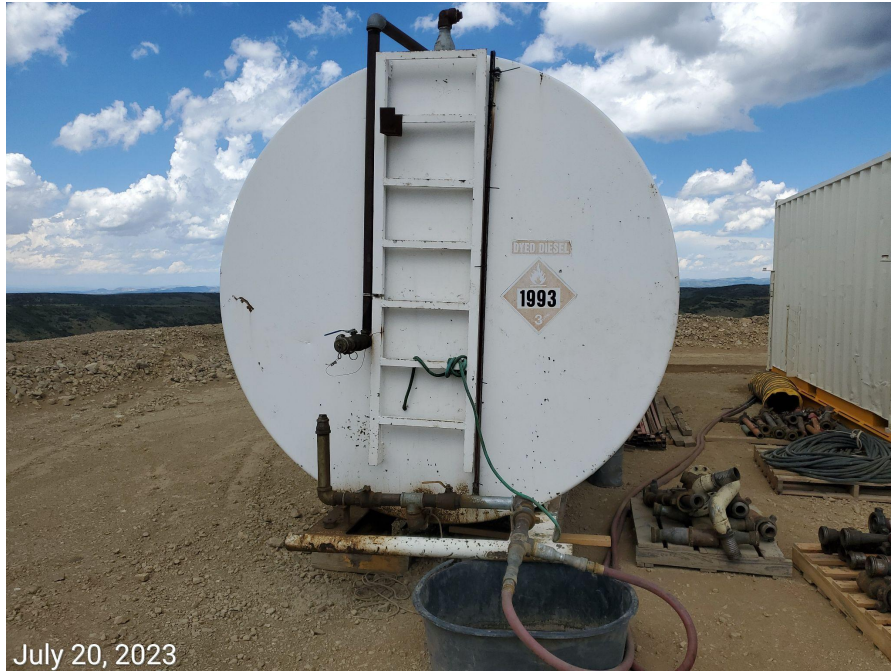
**Energy & Carbon Management
Commission**

Department of Natural Resources

Inspection Photos

Operator Name: CAERUS PICEANCE LLC #10456

Location Number: 478266



Stained soils at diesel tank.



COLORADO

**Energy & Carbon Management
Commission**

Department of Natural Resources

Inspection Photos

Operator Name: CAERUS PICEANCE LLC #10456

Location Number: 478266



July 20, 2023



July 20, 2023

Southwest sediment trap. BMP has not been constructed with an protected/engineered inlet or outlet.



COLORADO

**Energy & Carbon Management
Commission**

Department of Natural Resources

Inspection Photos

Operator Name: CAERUS PICEANCE LLC #10456

Location Number: 478266



Northwest sediment trap. BMP inadequate in size and has not been constructed with an protected/engineered inlet or outlet.



COLORADO

**Energy & Carbon Management
Commission**

Department of Natural Resources

Inspection Photos

Operator Name: CAERUS PICEANCE LLC #10456

Location Number: 478266



Northeast sediment trap. BMP has not been constructed with an protected/engineered inlet or outlet.



COLORADO

**Energy & Carbon Management
Commission**

Department of Natural Resources