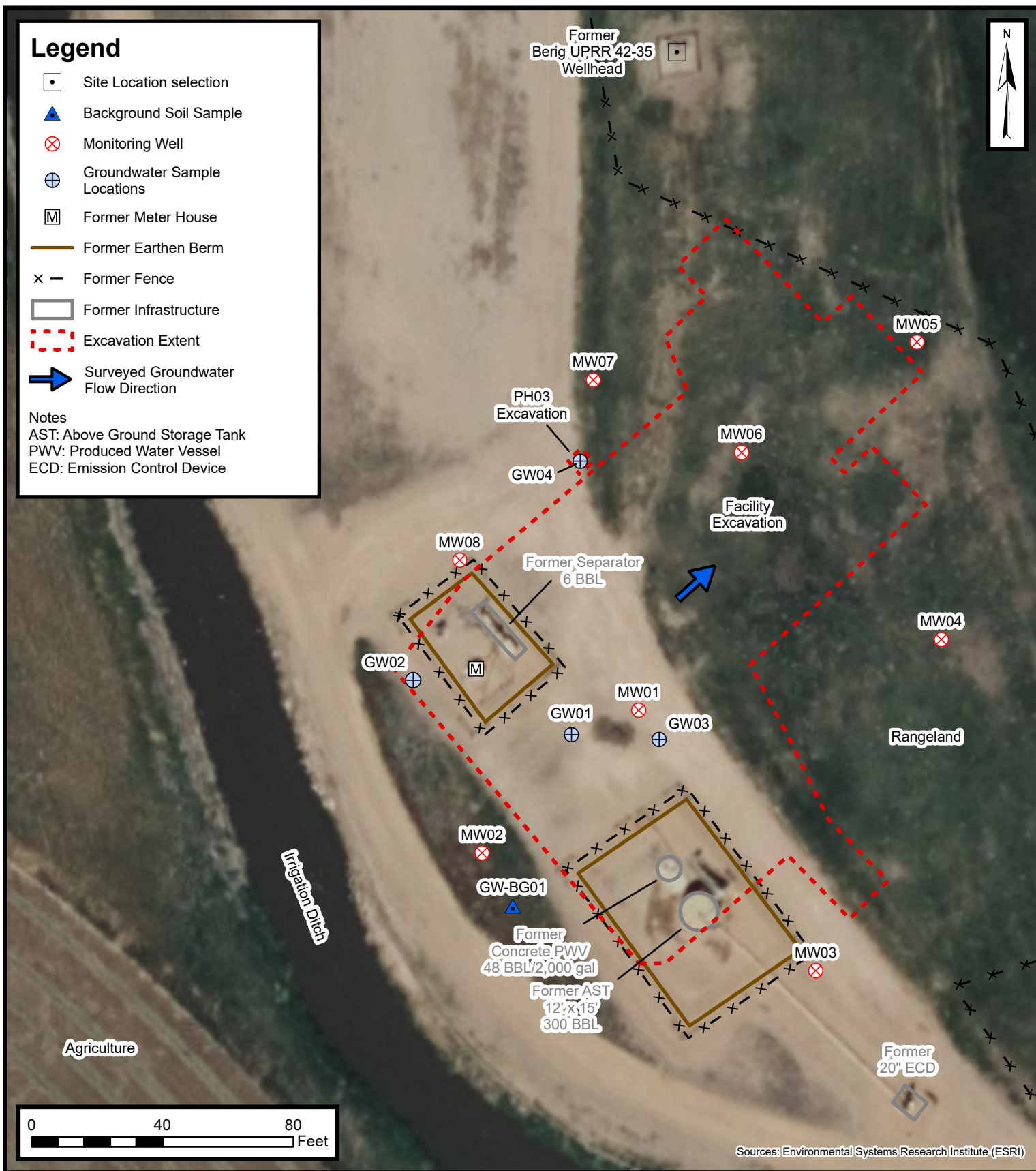


## Legend

- Site Location selection
- Background Soil Sample
- Monitoring Well
- Groundwater Sample Locations
- Former Meter House
- Former Earthen Berm
- Former Fence
- Former Infrastructure
- Excavation Extent
- Surveyed Groundwater Flow Direction

### Notes

AST: Above Ground Storage Tank  
 PWV: Produced Water Vessel  
 ECD: Emission Control Device



## Site Map

Berig 17-35 & UP42-35 1 Facility  
 Kerr-McGee Oil & Gas Onshore, LP  
 SENE SEC 35-T4N-R66W  
 Weld County, Colorado

Project Number: 09A1662045

FIGURE

1