

ENERGY SERVICES

RADIAL BOND TOOL  
GAMMA RAY  
CCL

Company CIVITAS RESOURCES  
Well DF RANCH 1161-08-12  
Field WATTENBERG  
County WELD  
State CO  
Country USA

Company CIVITAS RESOURCES  
Well DF RANCH 1161-08-12  
Field WATTENBERG  
County WELD  
State CO  
Country USA

Location: API #: 05-123-31076  
NWNE  
LAT. 40.941700 LONG. -104.226980  
SEC 8 TWP 11N RGE 61W  
Permanent Datum GL Elevation 4687'  
Log Measured From KB 12'  
Drilling Measured From KB  
Other Services  
Elevation  
K.B.  
D.F.  
G.L.

Date 6-8-2023  
Run Number ONE  
Depth Driller 7953'  
Depth Logger 2504'  
Bottom Logged Interval 2500'  
Top Log Interval SURFACE  
Open Hole Size 8.625"  
Type Fluid WATER  
Density / Viscosity NA  
Max. Recorded Temp. NA  
Estimated Cement Top  
Time Well Ready ON ARRIVAL  
Time Logger on Bottom NA  
Equipment Number 3813  
Location GREELEY, CO  
Recorded By J. KERR  
Witnessed By R. SHEETS

Borehole Record				Tubing Record			
Run Number	Bit	From	To	Size	Weight	From	To


	Size	Wgt/Ft	Top	Bottom
Casing Record	8.625"	24#	SURFACE	1058'
Surface String				
Prot. String	5.5"	17#	SURFACE	7938'
Production String				
Liner				

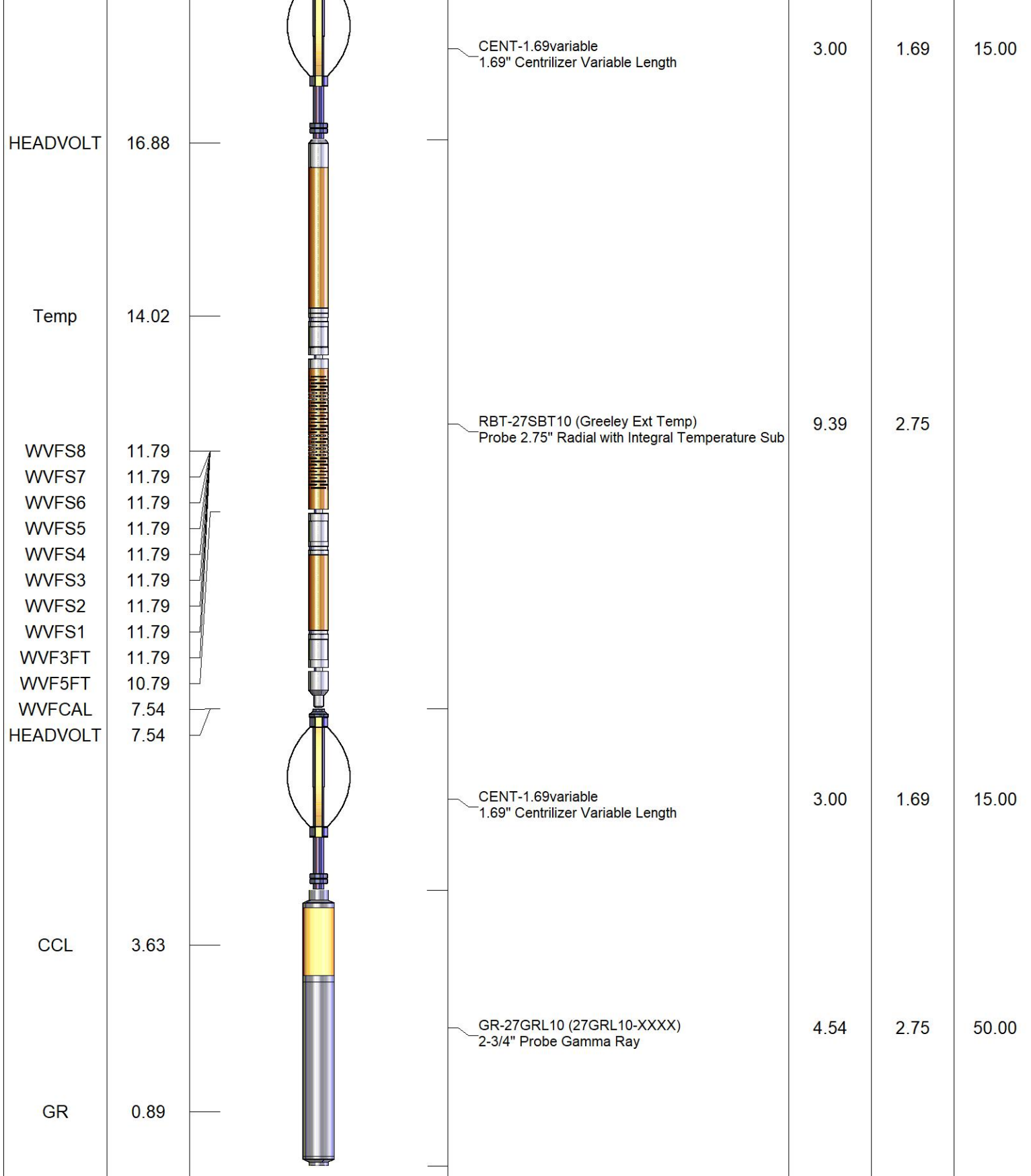
<<< Fold Here >>>

All interpretations are opinions based on inferences from electrical or other measurements and we cannot and do not guarantee the accuracy or correctness of any interpretation, and we shall not, except in the case of gross or willful negligence on our part, be liable or responsible for any loss, costs, damages, or expenses incurred or sustained by anyone resulting from any interpretation made by any of our officers, agents or employees. These interpretations are also subject to our general terms and conditions set out in our current Price Schedule.

Comments

RAN CBL TO VERIFY CEMENT BOND

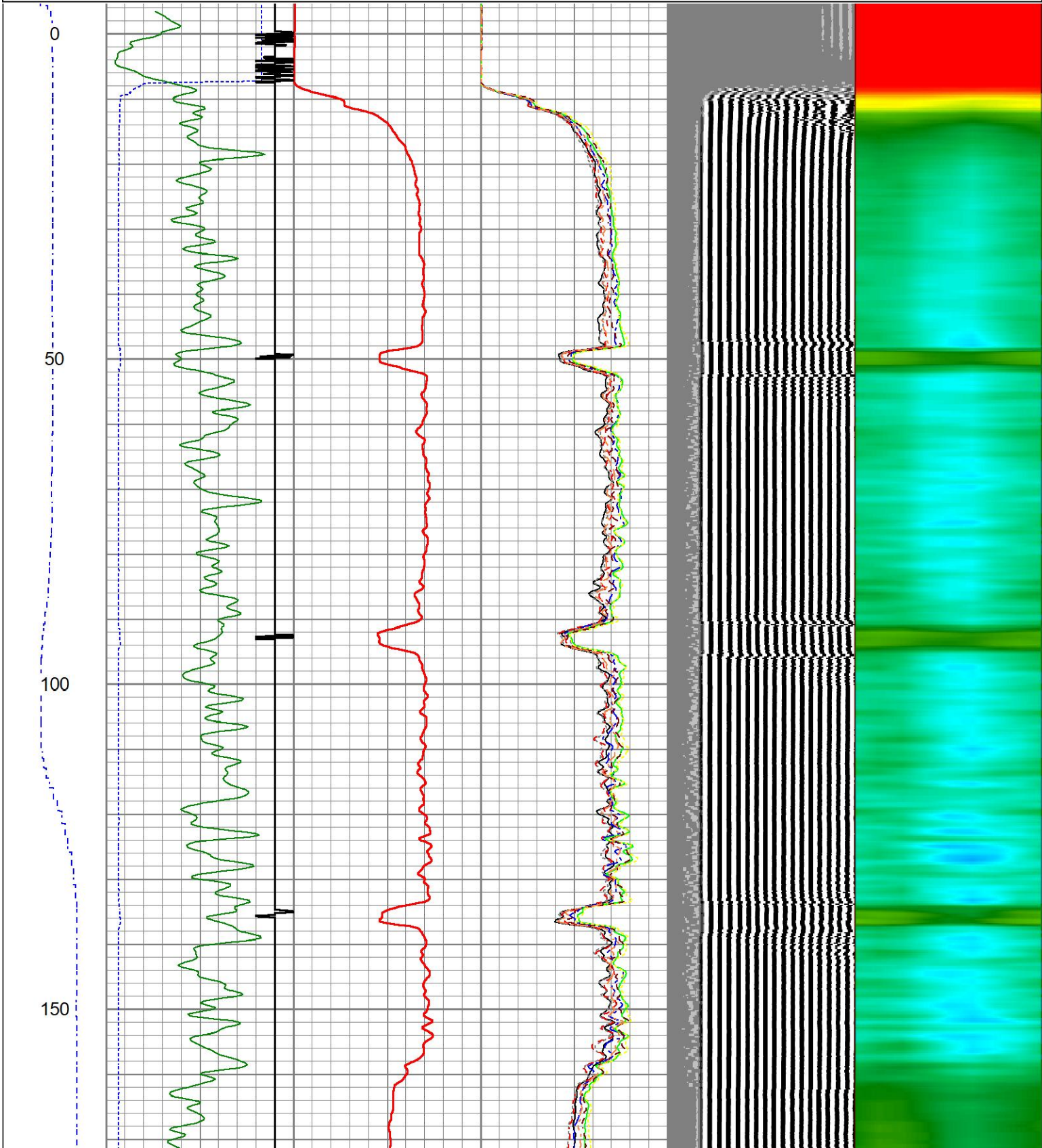
Sensor	Offset (ft)	Schematic	Description	Length (ft)	O.D. (in)	Weight (lb)
			CHD-1_11/16_Cablehead 1 11/16 Cablehead	1.00	1.68	5.00

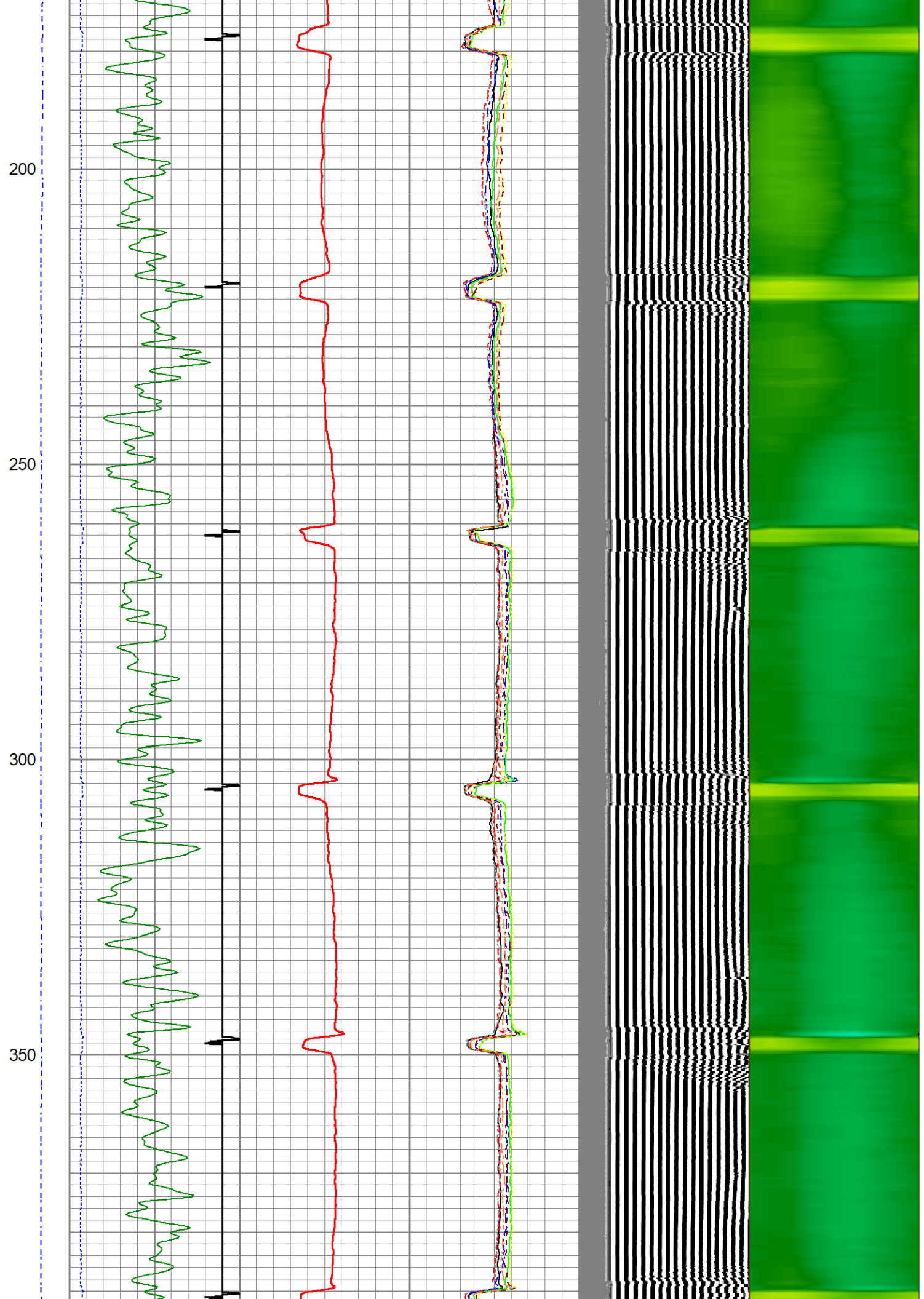


Dataset: df ranch 1161-8-12.db: field/well/run1/pass24  
 Total length: 20.93 ft  
 Total weight: 85.00 lb  
 O.D.: 2.75 in

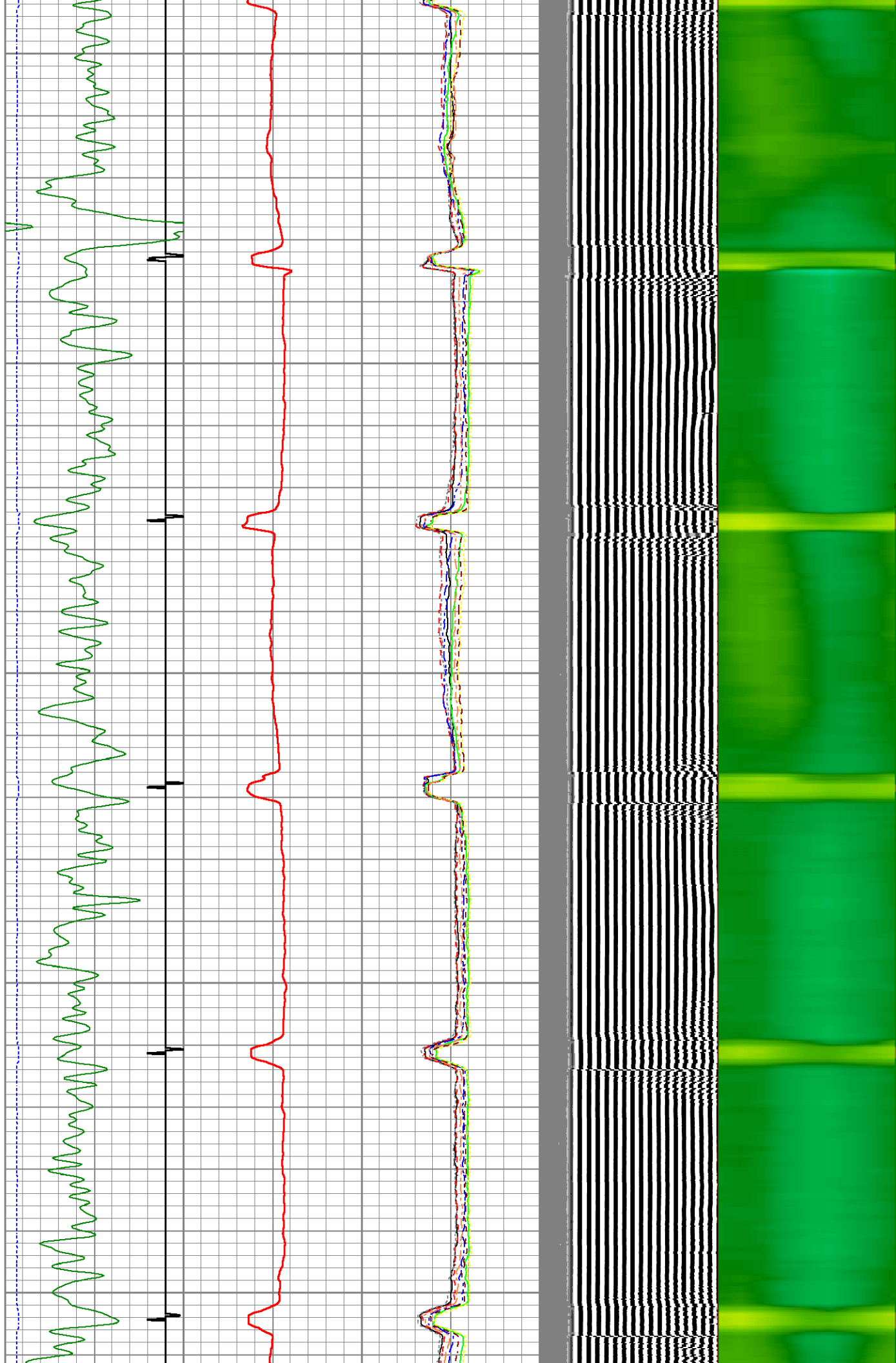
Database File df ranch 1161-8-12.db  
 Dataset Pathname pass24  
 Presentation Format ips\_rbtcitytas  
 Dataset Creation Thu Jun 08 17:46:46 2023  
 Charted by Depth in Foot scaled 1:240

LSPD	200	TT (usec)	1000	0	AMP (mV)	100	0	AMPS1	100	200	VDL (usec)	1200	1	Cement Map	8
(ft/min)	-9	CCL	1				0	AMPS2	100						
0	250	GR (GAPI)	150				0	AMPS3	100						
		GR (GAPI)	400				0	AMPS4	100						
							0	AMPS5	100						
							0	AMPS6	100						
							0	AMPS7	100						
							0	AMPS8	100						





400  
450  
500  
550  
600

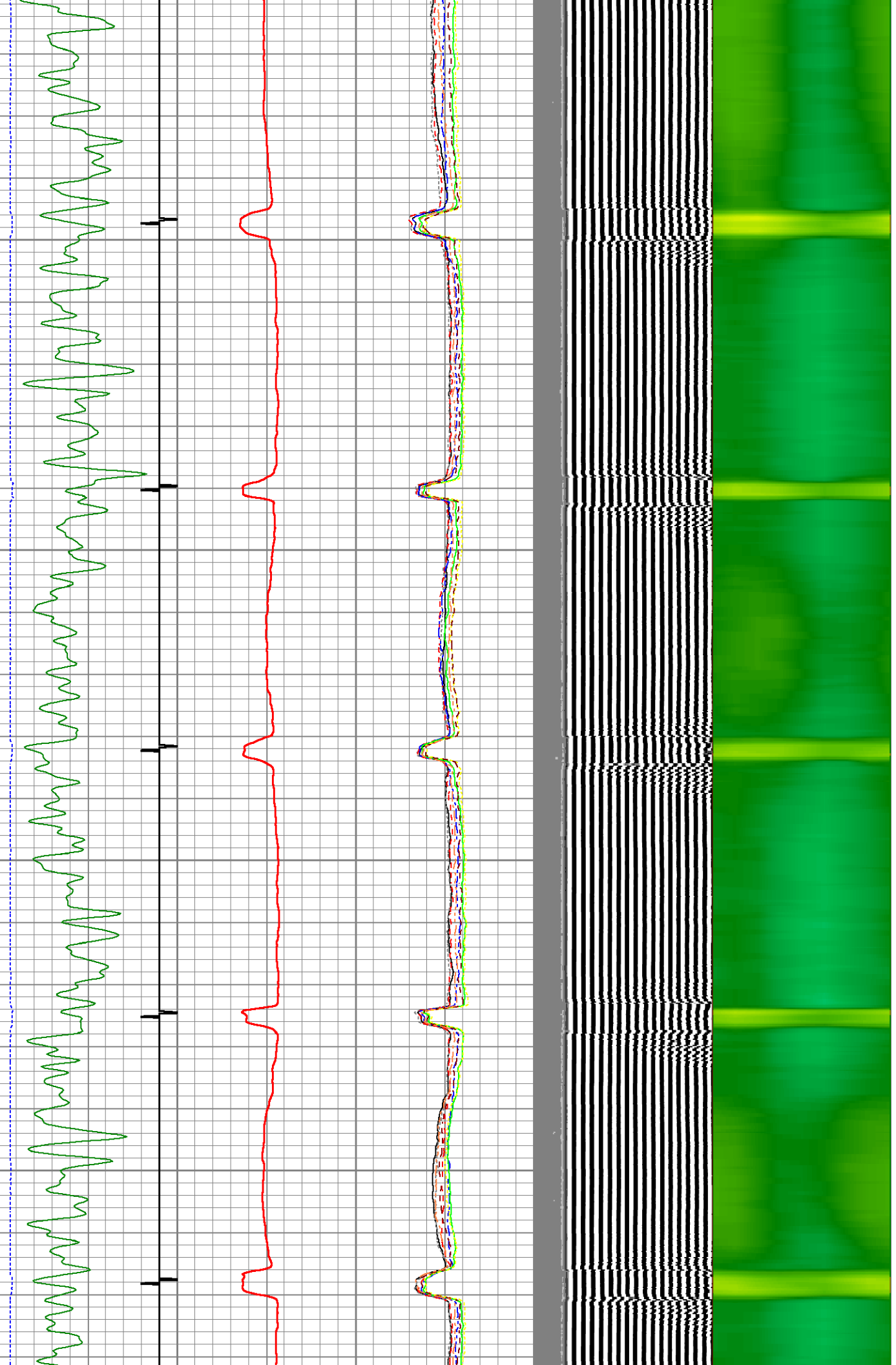


650

700

750

800



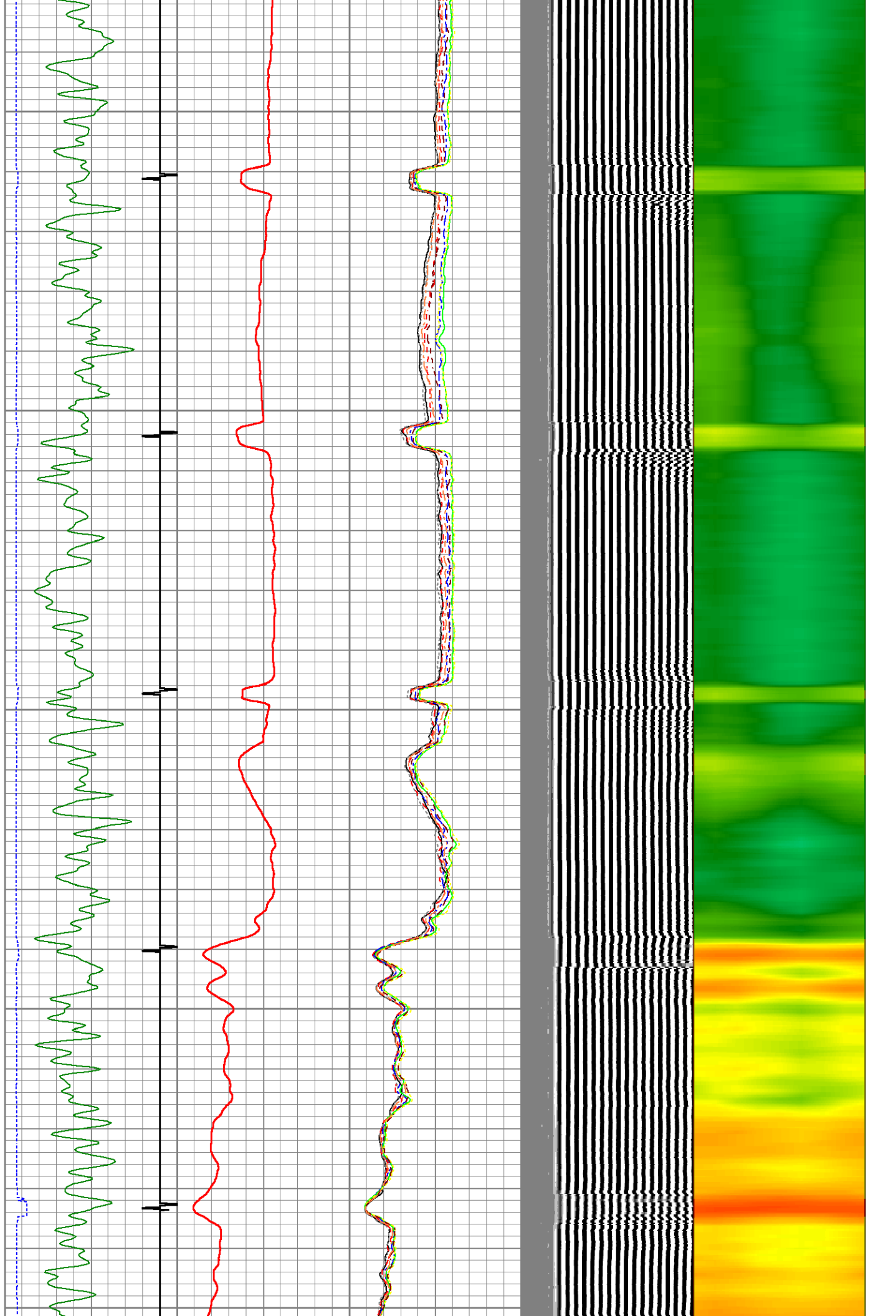
850

900

950

1000

1050

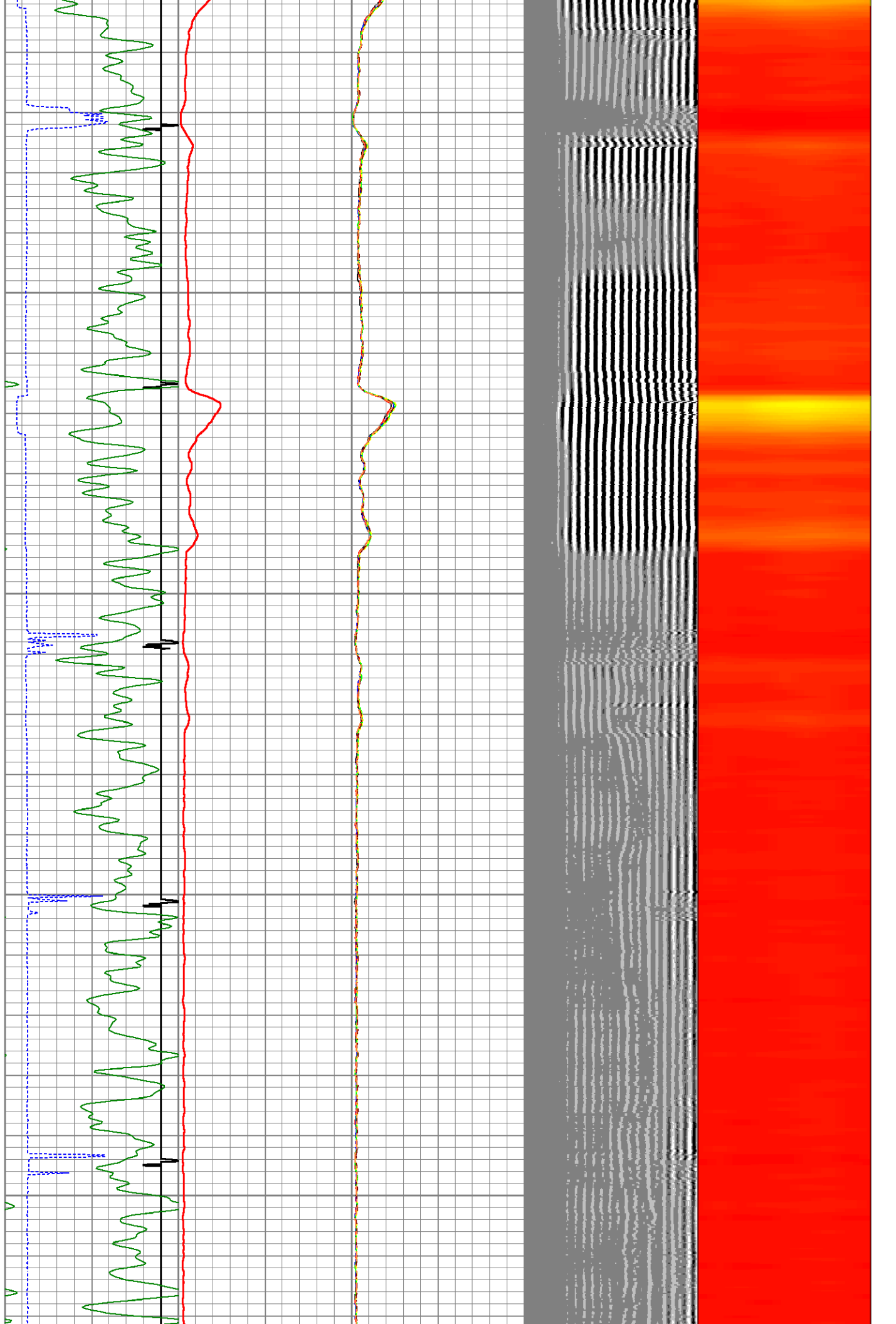


1100

1150

1200

1250

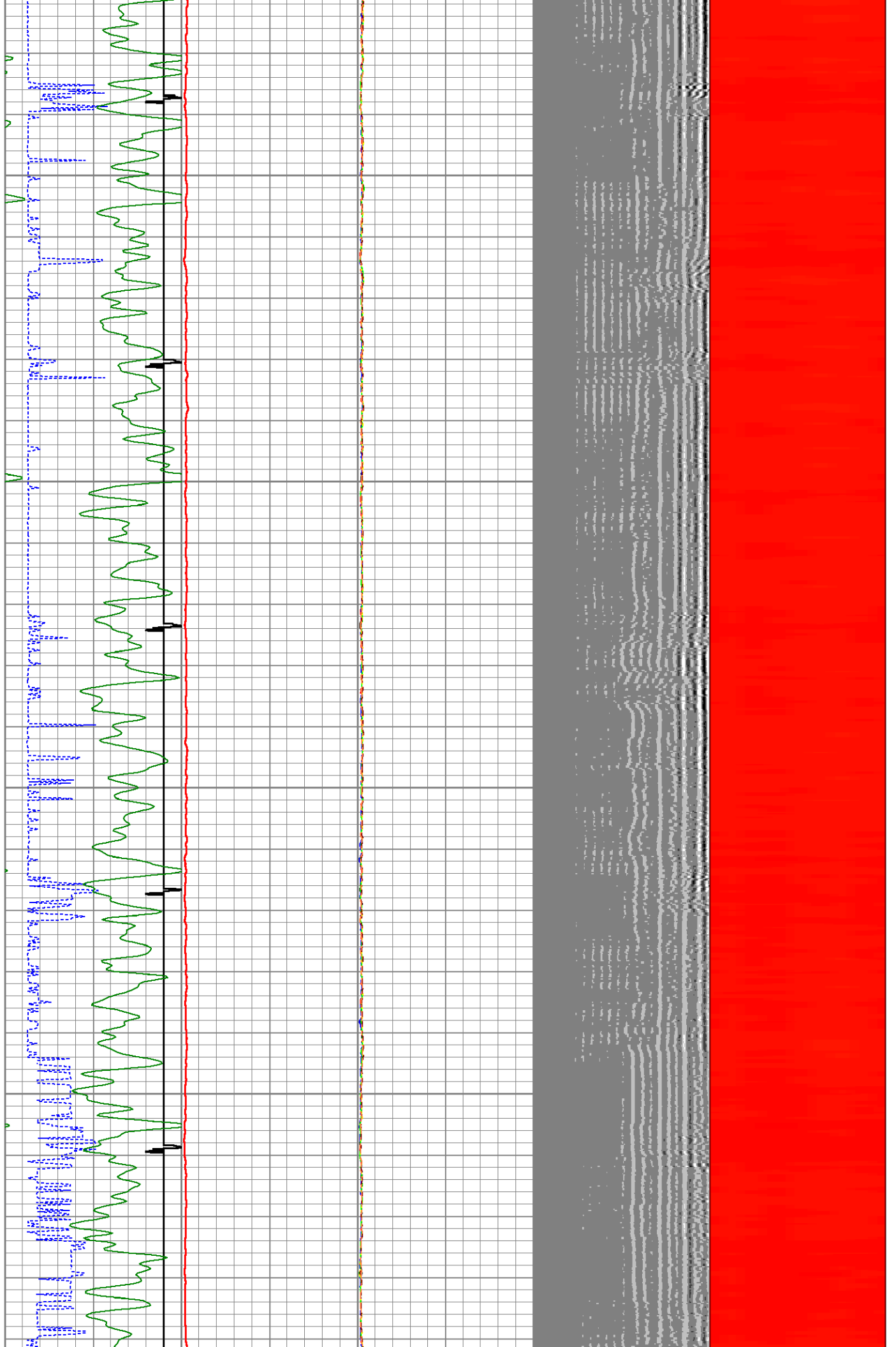


1300

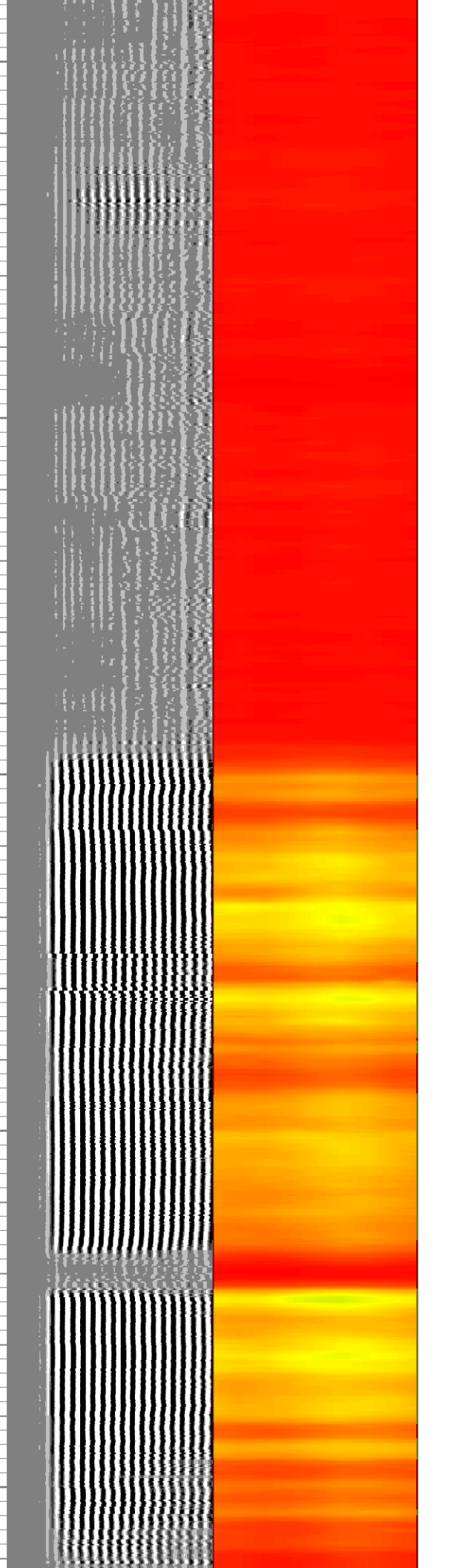
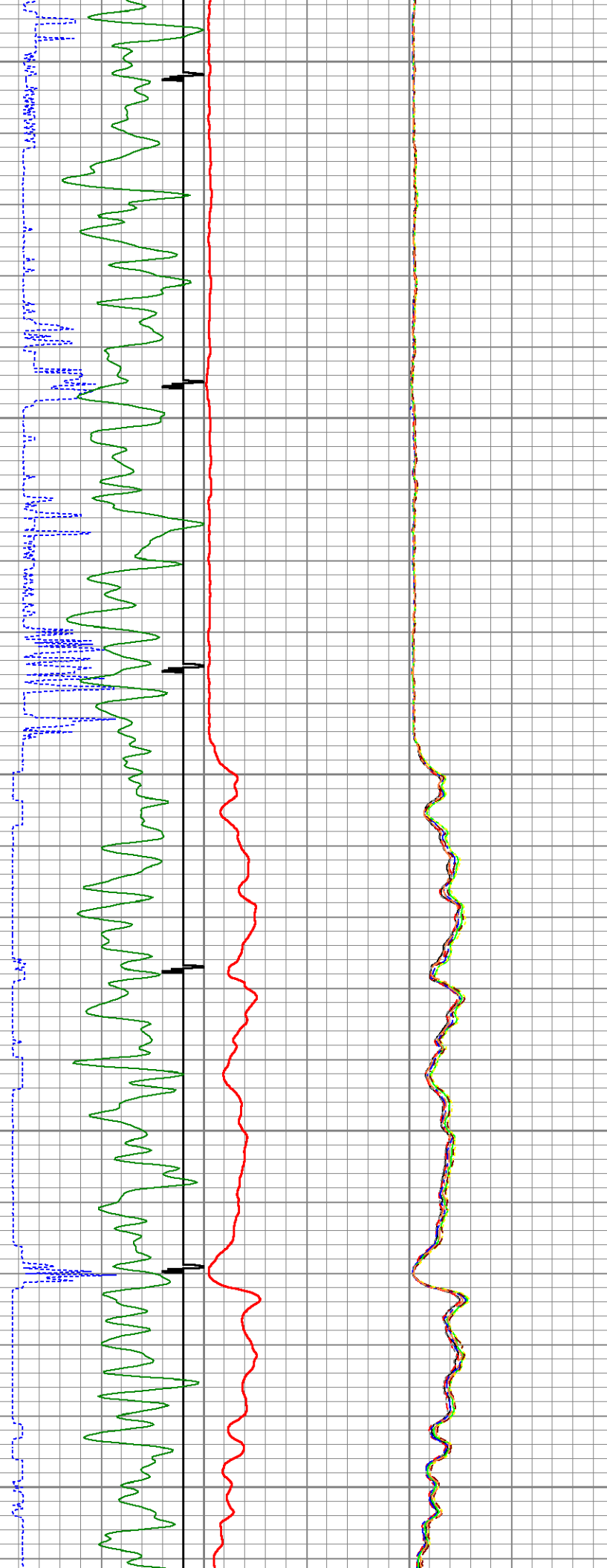
1350

1400

1450



1500  
1550  
1600  
1650  
1700

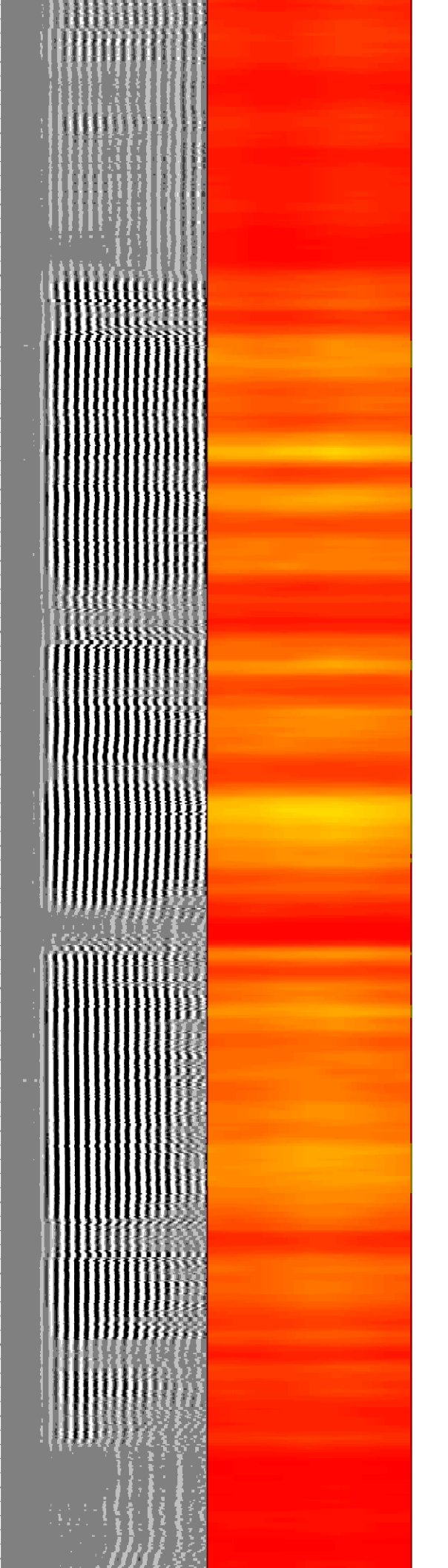
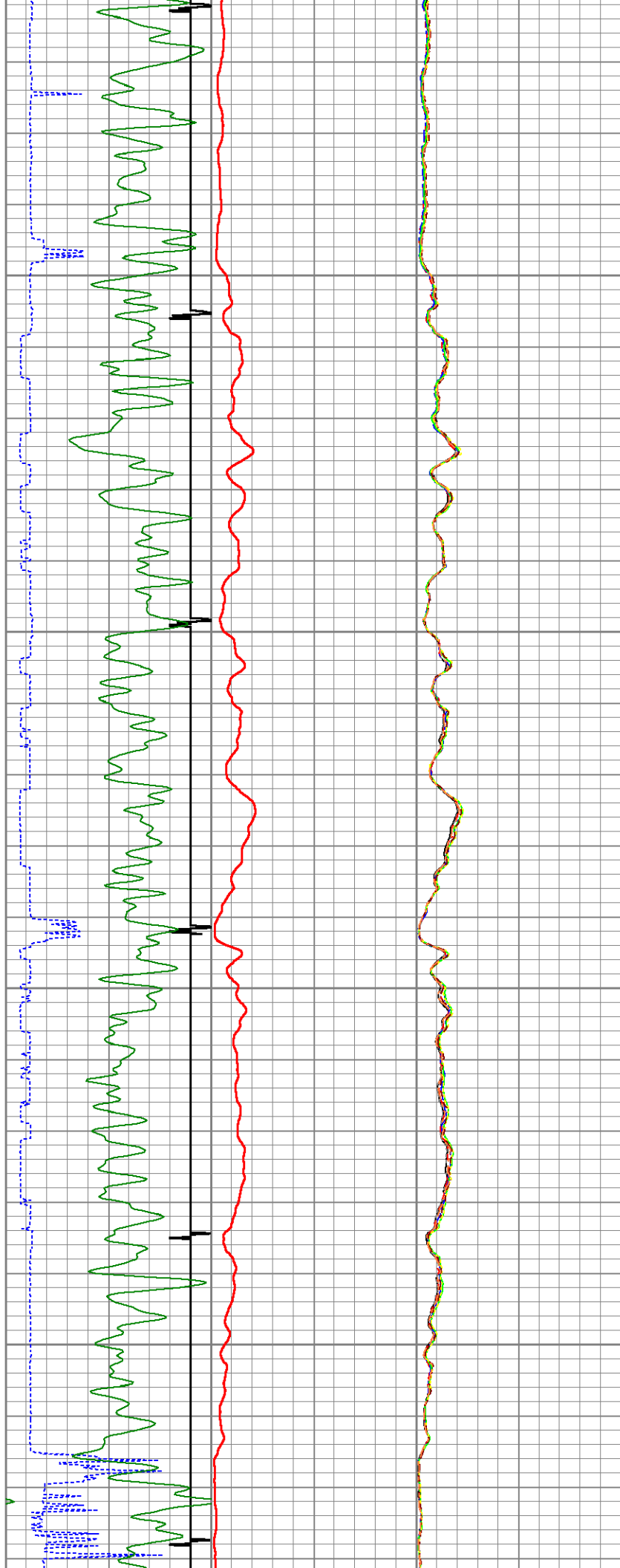


1750

1800

1850

1900



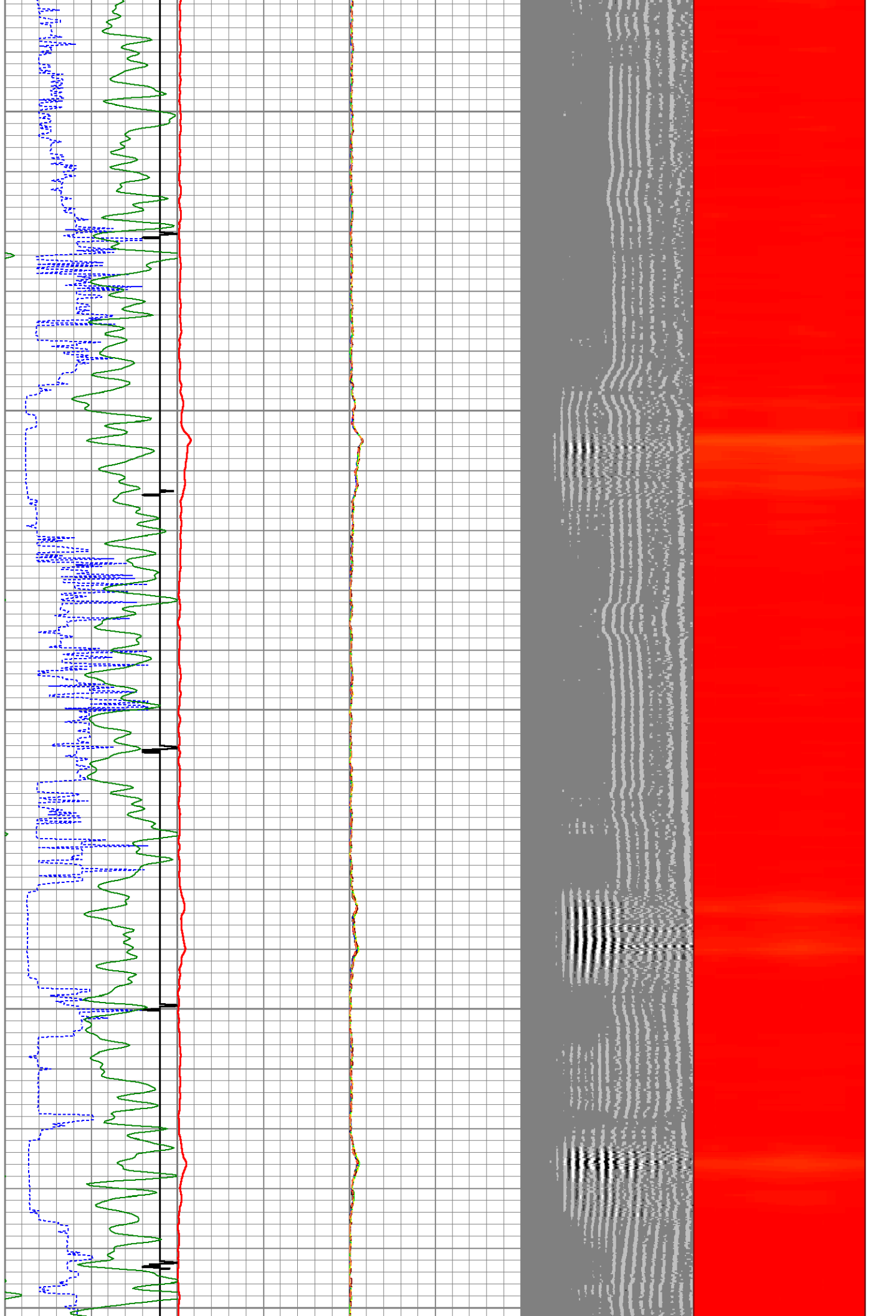
1950

2000

2050

2100

2150

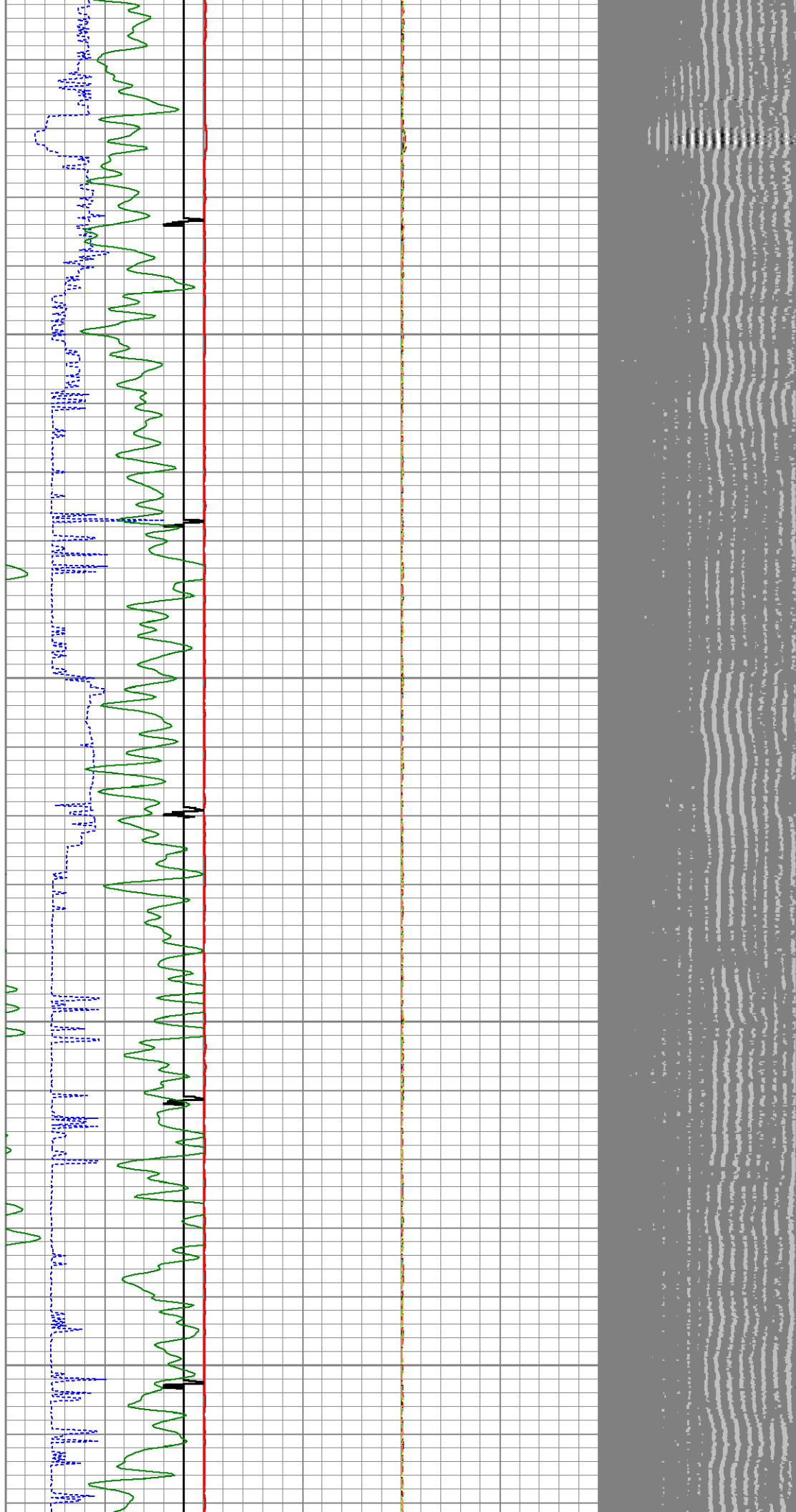


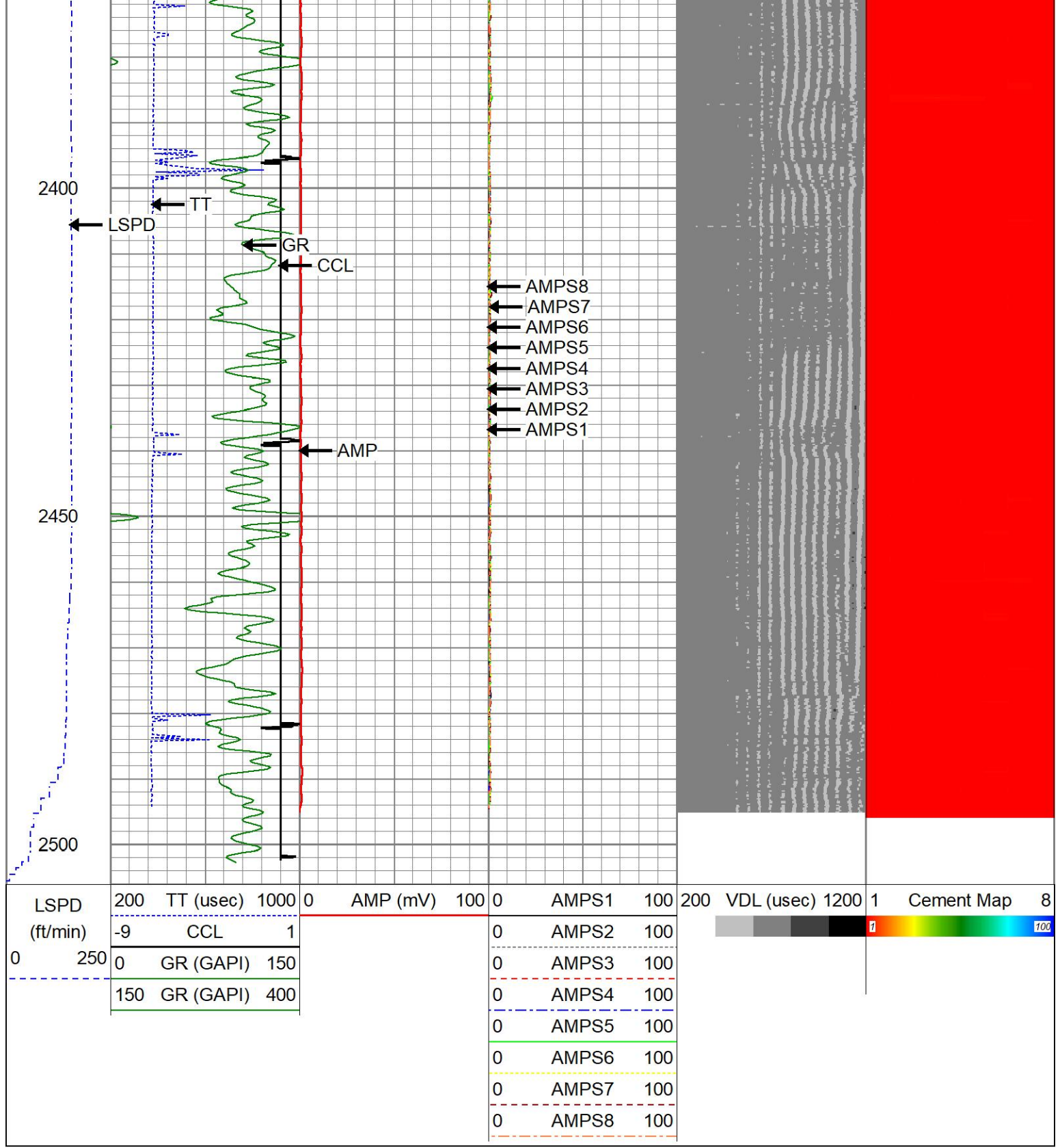
2200

2250

2300

2350





2400

2450

2500

LSPD

TT

GR

CCL

AMP

- ← AMPS8
- ← AMPS7
- ← AMPS6
- ← AMPS5
- ← AMPS4
- ← AMPS3
- ← AMPS2
- ← AMPS1

LSPD	200	TT (usec)	1000	0	AMP (mV)	100	0	AMPS1	100	200	VDL (usec)	1200	1	Cement Map	8
(ft/min)	-9	CCL	1					AMPS2	100						
0	250	GR (GAPI)	150					AMPS3	100						
		GR (GAPI)	400					AMPS4	100						
								AMPS5	100						
								AMPS6	100						
								AMPS7	100						
								AMPS8	100						

