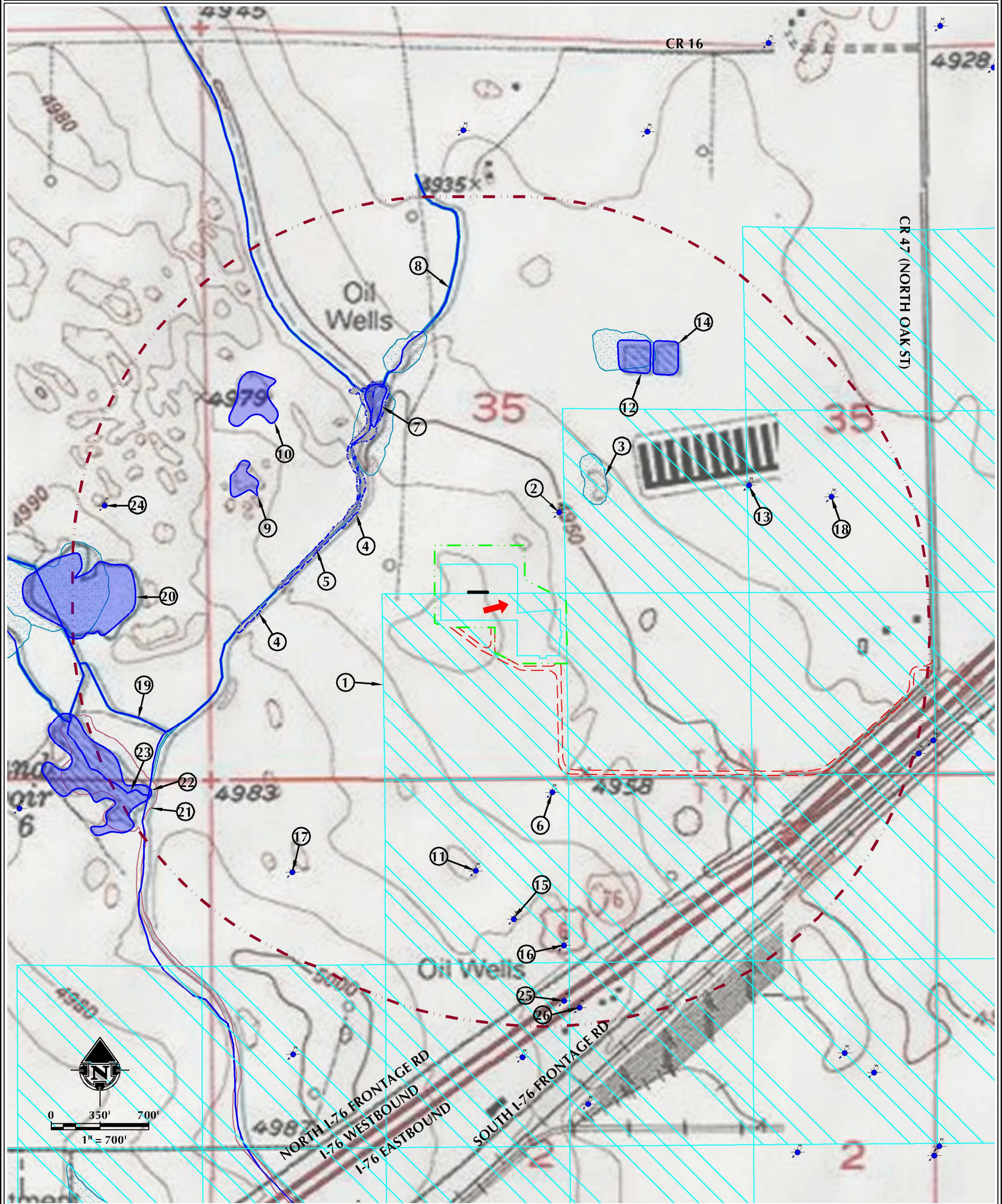


HYDROLOGY MAP

LABRISA 11-35HZ

HORIZONTAL MULTI-WELL PAD

E1/2 SW1/4 SECTION 35, TOWNSHIP 2 NORTH, RANGE 65 WEST, 6TH P.M., WELD COUNTY, COLORADO



<div><div><div>1. RULE 411.b GRID IS ±0'.</div><div>2. EXISTING WATER WELL (PERMIT #74709-F-R, WELL CONSTRUCTED) IS ±497' N.</div><div>3. NWI RIVERINE/POND/WETLAND AREAS ARE ±703' NE, ±723' NW, ±800' NW, ±1326' N, ±1335' NW, ±1337' N, ±1360' NW, ±1406' N, ±1540' NE, ±1667' N AND ±2377' W.</div><div>4. DELINEATED WETLANDS ARE ±703' NW AND ±1251' W.</div><div>5. NERES CANAL IS ±729' NW.</div><div>6. EXISTING WATER WELL (PERMIT #23672-F-R, WELL CONSTRUCTED) IS ±963' S.</div><div>7. POND IS ±1099' NW.</div><div>8. EXISTING DITCH IS ±1330' N.</div><div>9. POND IS ±1402' W.</div><div>10. POND IS ±1572' NW.</div><div>11. EXISTING WATER WELL (PERMIT #26452, WELL CONSTRUCTED) IS ±1572' S.</div></div><div><div>12. POND IS ±1598' NE.</div><div>13. EXISTING WATER WELL (PERMIT #63485-F, WELL CONSTRUCTED) IS ±1620' NE.</div><div>14. POND IS ±1705' NE.</div><div>15. EXISTING WATER WELL (PERMIT #78883-F, PERMIT ISSUED) IS ±1878' S.</div><div>16. EXISTING WATER WELL (PERMIT #130216, PERMIT ISSUED) IS ±2061' S.</div><div>17. EXISTING WATER WELL (PERMIT #49869-MH, PERMIT ISSUED) IS ±2098' SW.</div><div>18. EXISTING WATER WELL (PERMIT #7289-R, WELL CONSTRUCTED) IS ±2106' NE.</div><div>19. EXISTING DITCH IS ±2128' W.</div><div>20. POND IS ±2188' W.</div><div>21. NWI RIPARIAN AREA IS ±2361' SW.</div><div>22. POND IS ±2410' SW.</div><div>23. EXISTING DITCH IS ±2445' SW.</div><div>24. EXISTING WATER WELL (PERMIT #22153, WELL CONSTRUCTED) IS ±2447' W.</div></div><div><div>25. EXISTING WATER WELL (PERMIT #131329, WELL CONSTRUCTED) IS ±2461' S.</div><div>26. EXISTING WATER WELL (PERMIT #249081, PERMIT ISSUED) IS ±2518' S.</div></div></div> <tr><td><div><div><div><div><div>PROPOSED WELL</div><div>WATER WELL</div><div>PROPOSED ACCESS ROAD</div><div>DITCH/CANAL/DRAINAGE</div><div>DOWNGRADIENT</div><div>2640' WORKING PAD SURFACE BUFFER</div></div><div><div><div>PROPOSED OIL & GAS LOCATION</div><div>WORKING PAD SURFACE</div><div>100-YEAR FLOODPLAIN (PRELIMINARY, 2020)</div><div>100-YEAR FLOODWAY (PRELIMINARY, 2020)</div><div>100-YEAR FLOODPLAIN (EFFECTIVE, 2016)</div><div>NWI RIVERINE/POND/WETLAND</div><div>NWI RIPARIAN AREA</div></div><div><div>GUDI & TYPE III WELLS - GENERALIZED EXTERNAL BUFFER</div></div></div></div><div><div>ALL MEASUREMENTS ARE MADE FROM NEAREST EDGE OF WORKING PAD SURFACE</div></div></div><tr><td><div><div><div><div><div><div><div><div><div><div>609 CONSULTING, LLC</div><div>LOVELAND OFFICE</div><div>6706 North Franklin Avenue</div><div>Loveland, Colorado 80538</div><div>Phone: 970.776.4331</div></div><div><div>SHERIDAN OFFICE</div><div>1095 Saberton Avenue</div><div>Sheridan, Wyoming 82801</div><div>Phone: 307.674.6069</div></div></div></div><div><div>DATE SURVEYED: 7/25/22</div><div>DATE: 8/12/22</div><div>DRAFTER: JAC</div><div>REVISED: 9/28/22</div></div><div><div>DATA SOURCES & NOTES:</div><div>- TOPOGRAPHIC MAP IS COURTESY OF USGS.</div><div>- WATER WELLS COURTESY OF COLORADO DIVISION OF WATER RESOURCES.</div><div>- MANY FEATURES ON THIS MAP COME FROM PUBLICLY AVAILABLE DATA AND SURFACE WATER LYING OUTSIDE THE SURFACE PROPERTY MAY HAVE BEEN OBTAINED FROM AERIAL IMAGERY. THE ACCURACY AND COMPLETENESS OF SAID DATA HAS NOT BEEN VERIFIED BY 609 CONSULTING, LLC. EXISTING CONDITIONS MAY DIFFER FROM WHAT IS SHOWN.</div></div></div></div><div><div>PREPARED FOR:</div><div>Kerr-McGee Oil & Gas Onshore LP</div></div></div></div><div data-bbox="50 2439 60 3039" data-label="Text"><p>K:\ANADARKO\2022\2022_40_LABRISA_T2N_R65W_SEC_35\DWG\LABRISA_11-35HZ_HZ_HYDROLOGY_MAP.dwg 9/28/2022 4:32:15 PM, dlevin</p></div></div></div></td></tr></div></td></tr>	<div><div><div><div><div>PROPOSED WELL</div><div>WATER WELL</div><div>PROPOSED ACCESS ROAD</div><div>DITCH/CANAL/DRAINAGE</div><div>DOWNGRADIENT</div><div>2640' WORKING PAD SURFACE BUFFER</div></div><div><div><div>PROPOSED OIL & GAS LOCATION</div><div>WORKING PAD SURFACE</div><div>100-YEAR FLOODPLAIN (PRELIMINARY, 2020)</div><div>100-YEAR FLOODWAY (PRELIMINARY, 2020)</div><div>100-YEAR FLOODPLAIN (EFFECTIVE, 2016)</div><div>NWI RIVERINE/POND/WETLAND</div><div>NWI RIPARIAN AREA</div></div><div><div>GUDI & TYPE III WELLS - GENERALIZED EXTERNAL BUFFER</div></div></div></div><div><div>ALL MEASUREMENTS ARE MADE FROM NEAREST EDGE OF WORKING PAD SURFACE</div></div></div><tr><td><div><div><div><div><div><div><div><div><div><div>609 CONSULTING, LLC</div><div>LOVELAND OFFICE</div><div>6706 North Franklin Avenue</div><div>Loveland, Colorado 80538</div><div>Phone: 970.776.4331</div></div><div><div>SHERIDAN OFFICE</div><div>1095 Saberton Avenue</div><div>Sheridan, Wyoming 82801</div><div>Phone: 307.674.6069</div></div></div></div><div><div>DATE SURVEYED: 7/25/22</div><div>DATE: 8/12/22</div><div>DRAFTER: JAC</div><div>REVISED: 9/28/22</div></div><div><div>DATA SOURCES & NOTES:</div><div>- TOPOGRAPHIC MAP IS COURTESY OF USGS.</div><div>- WATER WELLS COURTESY OF COLORADO DIVISION OF WATER RESOURCES.</div><div>- MANY FEATURES ON THIS MAP COME FROM PUBLICLY AVAILABLE DATA AND SURFACE WATER LYING OUTSIDE THE SURFACE PROPERTY MAY HAVE BEEN OBTAINED FROM AERIAL IMAGERY. THE ACCURACY AND COMPLETENESS OF SAID DATA HAS NOT BEEN VERIFIED BY 609 CONSULTING, LLC. EXISTING CONDITIONS MAY DIFFER FROM WHAT IS SHOWN.</div></div></div></div><div><div>PREPARED FOR:</div><div>Kerr-McGee Oil & Gas Onshore LP</div></div></div></div><div data-bbox="50 2439 60 3039" data-label="Text"><p>K:\ANADARKO\2022\2022_40_LABRISA_T2N_R65W_SEC_35\DWG\LABRISA_11-35HZ_HZ_HYDROLOGY_MAP.dwg 9/28/2022 4:32:15 PM, dlevin</p></div></div></div></td></tr></div>	<div><div><div><div><div><div><div><div><div><div>609 CONSULTING, LLC</div><div>LOVELAND OFFICE</div><div>6706 North Franklin Avenue</div><div>Loveland, Colorado 80538</div><div>Phone: 970.776.4331</div></div><div><div>SHERIDAN OFFICE</div><div>1095 Saberton Avenue</div><div>Sheridan, Wyoming 82801</div><div>Phone: 307.674.6069</div></div></div></div><div><div>DATE SURVEYED: 7/25/22</div><div>DATE: 8/12/22</div><div>DRAFTER: JAC</div><div>REVISED: 9/28/22</div></div><div><div>DATA SOURCES & NOTES:</div><div>- TOPOGRAPHIC MAP IS COURTESY OF USGS.</div><div>- WATER WELLS COURTESY OF COLORADO DIVISION OF WATER RESOURCES.</div><div>- MANY FEATURES ON THIS MAP COME FROM PUBLICLY AVAILABLE DATA AND SURFACE WATER LYING OUTSIDE THE SURFACE PROPERTY MAY HAVE BEEN OBTAINED FROM AERIAL IMAGERY. THE ACCURACY AND COMPLETENESS OF SAID DATA HAS NOT BEEN VERIFIED BY 609 CONSULTING, LLC. EXISTING CONDITIONS MAY DIFFER FROM WHAT IS SHOWN.</div></div></div></div><div><div>PREPARED FOR:</div><div>Kerr-McGee Oil & Gas Onshore LP</div></div></div></div><div data-bbox="50 2439 60 3039" data-label="Text"><p>K:\ANADARKO\2022\2022_40_LABRISA_T2N_R65W_SEC_35\DWG\LABRISA_11-35HZ_HZ_HYDROLOGY_MAP.dwg 9/28/2022 4:32:15 PM, dlevin</p></div></div></div>
<div><div><div><div><div>PROPOSED WELL</div><div>WATER WELL</div><div>PROPOSED ACCESS ROAD</div><div>DITCH/CANAL/DRAINAGE</div><div>DOWNGRADIENT</div><div>2640' WORKING PAD SURFACE BUFFER</div></div><div><div><div>PROPOSED OIL & GAS LOCATION</div><div>WORKING PAD SURFACE</div><div>100-YEAR FLOODPLAIN (PRELIMINARY, 2020)</div><div>100-YEAR FLOODWAY (PRELIMINARY, 2020)</div><div>100-YEAR FLOODPLAIN (EFFECTIVE, 2016)</div><div>NWI RIVERINE/POND/WETLAND</div><div>NWI RIPARIAN AREA</div></div><div><div>GUDI & TYPE III WELLS - GENERALIZED EXTERNAL BUFFER</div></div></div></div><div><div>ALL MEASUREMENTS ARE MADE FROM NEAREST EDGE OF WORKING PAD SURFACE</div></div></div><tr><td><div><div><div><div><div><div><div><div><div><div>609 CONSULTING, LLC</div><div>LOVELAND OFFICE</div><div>6706 North Franklin Avenue</div><div>Loveland, Colorado 80538</div><div>Phone: 970.776.4331</div></div><div><div>SHERIDAN OFFICE</div><div>1095 Saberton Avenue</div><div>Sheridan, Wyoming 82801</div><div>Phone: 307.674.6069</div></div></div></div><div><div>DATE SURVEYED: 7/25/22</div><div>DATE: 8/12/22</div><div>DRAFTER: JAC</div><div>REVISED: 9/28/22</div></div><div><div>DATA SOURCES & NOTES:</div><div>- TOPOGRAPHIC MAP IS COURTESY OF USGS.</div><div>- WATER WELLS COURTESY OF COLORADO DIVISION OF WATER RESOURCES.</div><div>- MANY FEATURES ON THIS MAP COME FROM PUBLICLY AVAILABLE DATA AND SURFACE WATER LYING OUTSIDE THE SURFACE PROPERTY MAY HAVE BEEN OBTAINED FROM AERIAL IMAGERY. THE ACCURACY AND COMPLETENESS OF SAID DATA HAS NOT BEEN VERIFIED BY 609 CONSULTING, LLC. EXISTING CONDITIONS MAY DIFFER FROM WHAT IS SHOWN.</div></div></div></div><div><div>PREPARED FOR:</div><div>Kerr-McGee Oil & Gas Onshore LP</div></div></div></div><div data-bbox="50 2439 60 3039" data-label="Text"><p>K:\ANADARKO\2022\2022_40_LABRISA_T2N_R65W_SEC_35\DWG\LABRISA_11-35HZ_HZ_HYDROLOGY_MAP.dwg 9/28/2022 4:32:15 PM, dlevin</p></div></div></div></td></tr></div>	<div><div><div><div><div><div><div><div><div><div>609 CONSULTING, LLC</div><div>LOVELAND OFFICE</div><div>6706 North Franklin Avenue</div><div>Loveland, Colorado 80538</div><div>Phone: 970.776.4331</div></div><div><div>SHERIDAN OFFICE</div><div>1095 Saberton Avenue</div><div>Sheridan, Wyoming 82801</div><div>Phone: 307.674.6069</div></div></div></div><div><div>DATE SURVEYED: 7/25/22</div><div>DATE: 8/12/22</div><div>DRAFTER: JAC</div><div>REVISED: 9/28/22</div></div><div><div>DATA SOURCES & NOTES:</div><div>- TOPOGRAPHIC MAP IS COURTESY OF USGS.</div><div>- WATER WELLS COURTESY OF COLORADO DIVISION OF WATER RESOURCES.</div><div>- MANY FEATURES ON THIS MAP COME FROM PUBLICLY AVAILABLE DATA AND SURFACE WATER LYING OUTSIDE THE SURFACE PROPERTY MAY HAVE BEEN OBTAINED FROM AERIAL IMAGERY. THE ACCURACY AND COMPLETENESS OF SAID DATA HAS NOT BEEN VERIFIED BY 609 CONSULTING, LLC. EXISTING CONDITIONS MAY DIFFER FROM WHAT IS SHOWN.</div></div></div></div><div><div>PREPARED FOR:</div><div>Kerr-McGee Oil & Gas Onshore LP</div></div></div></div><div data-bbox="50 2439 60 3039" data-label="Text"><p>K:\ANADARKO\2022\2022_40_LABRISA_T2N_R65W_SEC_35\DWG\LABRISA_11-35HZ_HZ_HYDROLOGY_MAP.dwg 9/28/2022 4:32:15 PM, dlevin</p></div></div></div>	
<div><div><div><div><div><div><div><div><div><div>609 CONSULTING, LLC</div><div>LOVELAND OFFICE</div><div>6706 North Franklin Avenue</div><div>Loveland, Colorado 80538</div><div>Phone: 970.776.4331</div></div><div><div>SHERIDAN OFFICE</div><div>1095 Saberton Avenue</div><div>Sheridan, Wyoming 82801</div><div>Phone: 307.674.6069</div></div></div></div><div><div>DATE SURVEYED: 7/25/22</div><div>DATE: 8/12/22</div><div>DRAFTER: JAC</div><div>REVISED: 9/28/22</div></div><div><div>DATA SOURCES & NOTES:</div><div>- TOPOGRAPHIC MAP IS COURTESY OF USGS.</div><div>- WATER WELLS COURTESY OF COLORADO DIVISION OF WATER RESOURCES.</div><div>- MANY FEATURES ON THIS MAP COME FROM PUBLICLY AVAILABLE DATA AND SURFACE WATER LYING OUTSIDE THE SURFACE PROPERTY MAY HAVE BEEN OBTAINED FROM AERIAL IMAGERY. THE ACCURACY AND COMPLETENESS OF SAID DATA HAS NOT BEEN VERIFIED BY 609 CONSULTING, LLC. EXISTING CONDITIONS MAY DIFFER FROM WHAT IS SHOWN.</div></div></div></div><div><div>PREPARED FOR:</div><div>Kerr-McGee Oil & Gas Onshore LP</div></div></div></div><div data-bbox="50 2439 60 3039" data-label="Text"><p>K:\ANADARKO\2022\2022_40_LABRISA_T2N_R65W_SEC_35\DWG\LABRISA_11-35HZ_HZ_HYDROLOGY_MAP.dwg 9/28/2022 4:32:15 PM, dlevin</p></div></div></div>		