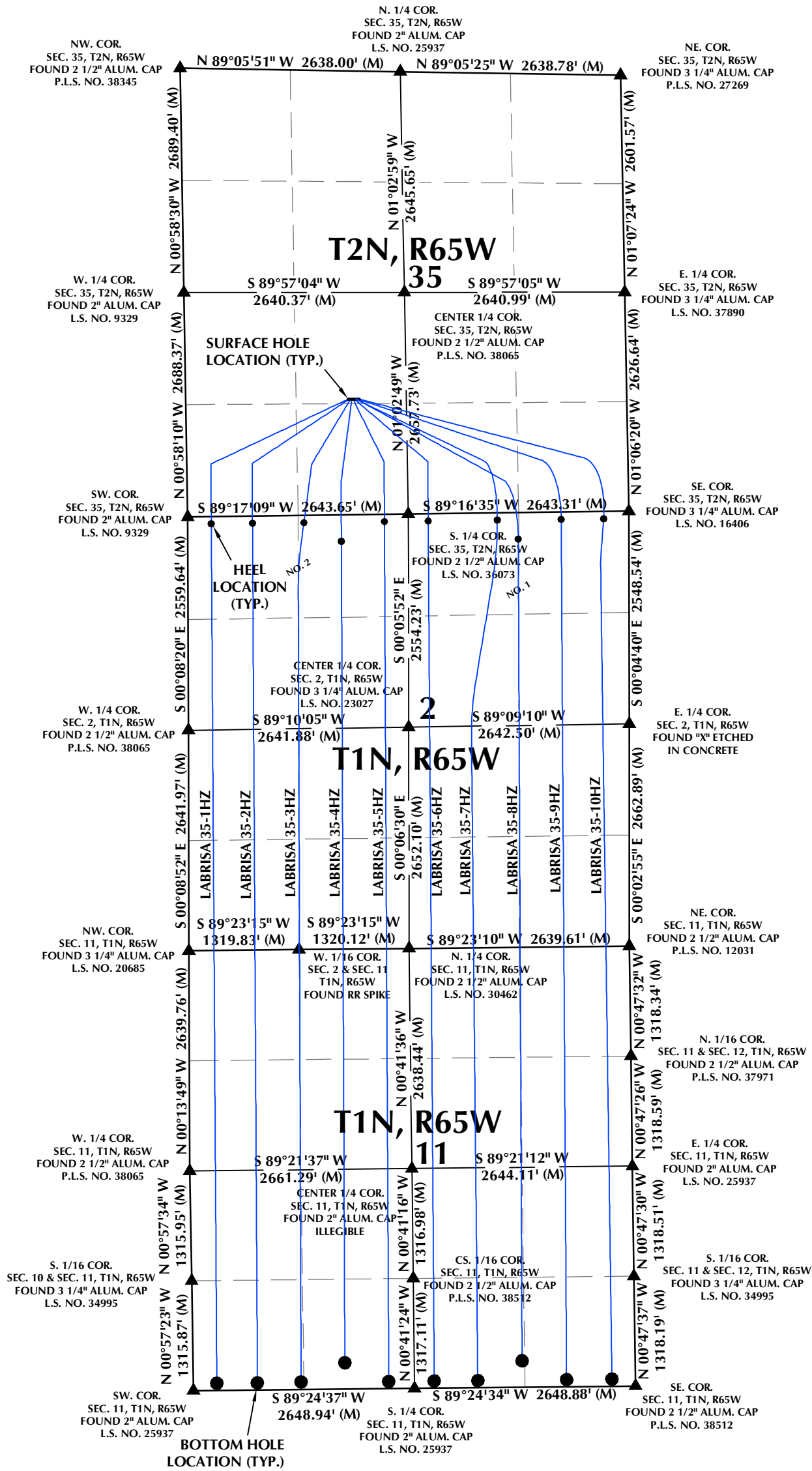


DIRECTIONAL WELL PLAT (COGCC) / MULTI-WELL PLAN (OGED)
SECTION 35, T2N, R65W & SECTIONS 2 & 11, T1N, R65W



- NOTES:
- ▲ INDICATES SECTION CORNER.
 - INDICATES CALCULATED CORNER.
 - BASIS OF BEARINGS DERIVED FROM COLORADO COORDINATE SYSTEM OF 1983, NORTH ZONE.
 - ALL MEASURED DISTANCES ARE GRID.
 - COMBINED SCALE FACTOR: .99977273 CALCULATED FROM THE CENTER 1/4 CORNER OF SECTION 35, T2N, R65W.
 - WELL FOOTAGES ARE MEASURED AT RIGHT ANGLES TO THE SECTION LINES.

WELL PAD - LABRISA 11-35HZ

DIRECTIONAL WELL PLAT (COGCC) /
MULTI-WELL PLAN (OGED)
LABRISA 35-1HZ, LABRISA 35-2HZ,
LABRISA 35-3HZ, LABRISA 35-4HZ,
LABRISA 35-5HZ, LABRISA 35-6HZ,
LABRISA 35-7HZ, LABRISA 35-8HZ,
LABRISA 35-9HZ & LABRISA 35-10HZ
LOCATED IN SECTION 35, T2N, R65W &
SECTIONS 2 & 11, T1N, R65W, 6TH P.M.
WELD COUNTY, COLORADO

Kerr-McGee Oil &
Gas Onshore LP
1099 18th Street
Denver, Colorado 80202



CONSULTING, LLC

SHERIDAN OFFICE
1095 Saberton Avenue
Sheridan, Wyoming 82801
Phone 307-674-0609

LOVELAND OFFICE
6706 North Franklin Avenue
Loveland, Colorado 80538
Phone 970-776-4331

| | | | |
|---------------|---------|----------------|---------|
| DRAFTED BY: | SJM | CHECKED BY: | RKF |
| DATE DRAFTED: | 9/9/22 | DATE SURVEYED: | 7/25/22 |
| REVISED: | 9/20/22 | FILE NAME: | 22-40 |

SHEET NO:
1A
1A OF 1

DIRECTIONAL WELL PLAT (COGCC) / MULTI-WELL PLAN (OGED)
SECTION 35, T2N, R65W & SECTIONS 2 & 11, T1N, R65W

WELL NOTES:

LABRISA 35-1HZ

SURFACE HOLE LOCATION: 1387' FSL, 1944' FWL (SEC. 35)
HEEL LOCATION: 85' FNL, 280' FWL (SEC. 2)
BOTTOM HOLE LOCATION: 85' FSL, 280' FWL (SEC. 11)

LABRISA 35-2HZ

SURFACE HOLE LOCATION: 1387' FSL, 1959' FWL (SEC. 35)
HEEL LOCATION: 85' FNL, 774' FWL (SEC. 2)
BOTTOM HOLE LOCATION: 85' FSL, 768' FWL (SEC. 11)

LABRISA 35-3HZ

SURFACE HOLE LOCATION: 1387' FSL, 1974' FWL (SEC. 35)
HEEL LOCATION: 87' FNL, 1391' FWL (SEC. 2)
BOTTOM HOLE LOCATION: 85' FSL, 1291' FWL (SEC. 11)

LABRISA 35-4HZ

SURFACE HOLE LOCATION: 1387' FSL, 1989' FWL (SEC. 35)
HEEL LOCATION: 315' FNL, 1839' FWL (SEC. 2)
BOTTOM HOLE LOCATION: 315' FSL, 1819' FWL (SEC. 11)

LABRISA 35-5HZ

SURFACE HOLE LOCATION: 1387' FSL, 2004' FWL (SEC. 35)
HEEL LOCATION: 85' FNL, 2356' FWL (SEC. 2)
BOTTOM HOLE LOCATION: 85' FSL, 2342' FWL (SEC. 11)

LABRISA 35-6HZ

SURFACE HOLE LOCATION: 1387' FSL, 2019' FWL (SEC. 35)
HEEL LOCATION: 85' FNL, 2406' FEL (SEC. 2)
BOTTOM HOLE LOCATION: 85' FSL, 2411' FEL (SEC. 11)

LABRISA 35-7HZ

SURFACE HOLE LOCATION: 1386' FSL, 2034' FWL (SEC. 35)
HEEL LOCATION: 84' FNL, 1578' FEL (SEC. 2)
BOTTOM HOLE LOCATION: 85' FSL, 1888' FEL (SEC. 11)

LABRISA 35-8HZ

SURFACE HOLE LOCATION: 1386' FSL, 2049' FWL (SEC. 35)
HEEL LOCATION: 315' FNL, 1326' FEL (SEC. 2)
BOTTOM HOLE LOCATION: 316' FSL, 1354' FEL (SEC. 11)

LABRISA 35-9HZ

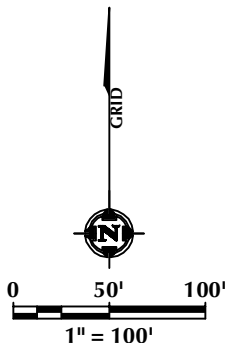
SURFACE HOLE LOCATION: 1386' FSL, 2064' FWL (SEC. 35)
HEEL LOCATION: 85' FNL, 811' FEL (SEC. 2)
BOTTOM HOLE LOCATION: 85' FSL, 824' FEL (SEC. 11)

LABRISA 35-10HZ

SURFACE HOLE LOCATION: 1386' FSL, 2079' FWL (SEC. 35)
HEEL LOCATION: 86' FNL, 303' FEL (SEC. 2)
BOTTOM HOLE LOCATION: 85' FSL, 280' FEL (SEC. 11)

WELL HEAD SPACING DETAIL

LABRISA 35-1HZ 15'
LABRISA 35-2HZ 15'
LABRISA 35-3HZ 15'
LABRISA 35-4HZ 15'
LABRISA 35-5HZ 15'
LABRISA 35-6HZ 15'
LABRISA 35-7HZ 15'
LABRISA 35-8HZ 15'
LABRISA 35-9HZ 15'
LABRISA 35-10HZ 15'



LOVELAND OFFICE
6706 North Franklin Avenue
Loveland, Colorado 80538
Phone 970-776-4331

SHERIDAN OFFICE
1095 Saberton Avenue
Sheridan, Wyoming 82801
Phone 307-674-0609

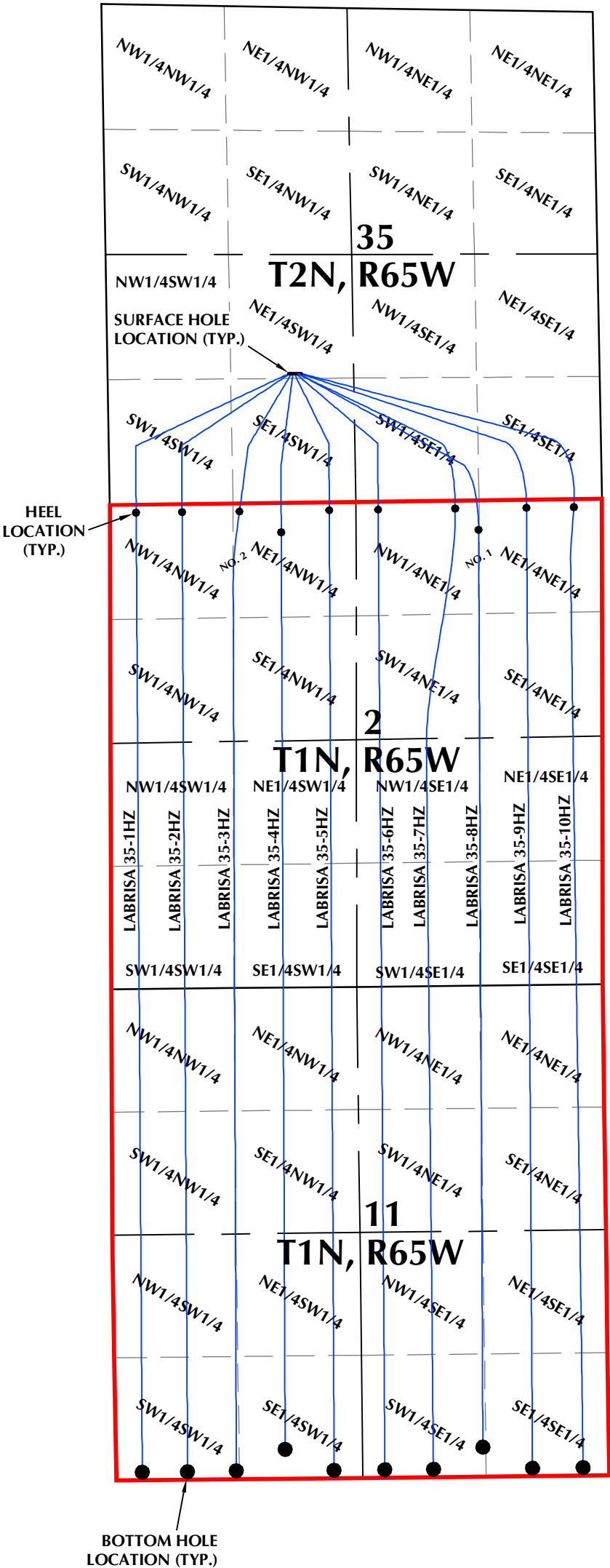
**Kerr-McGee Oil &
Gas Onshore LP**
1099 18th Street
Denver, Colorado 80202

WELL PAD - LABRISA 11-35HZ

DIRECTIONAL WELL PLAT (COGCC) /
MULTI-WELL PLAN (OGED)
LABRISA 35-1HZ, LABRISA 35-2HZ,
LABRISA 35-3HZ, LABRISA 35-4HZ,
LABRISA 35-5HZ, LABRISA 35-6HZ,
LABRISA 35-7HZ, LABRISA 35-8HZ,
LABRISA 35-9HZ & LABRISA 35-10HZ
LOCATED IN SECTION 35, T2N, R65W &
SECTIONS 2 & 11, T1N, R65W, 6TH P.M.
WELD COUNTY, COLORADO

| | | | | |
|---------------|---------|----------------|---------|-----------|
| DRAFTED BY: | SJM | CHECKED BY: | RKF | SHEET NO: |
| DATE DRAFTED: | 9/9/22 | DATE SURVEYED: | 7/25/22 | 1B |
| REVISED: | 9/20/22 | FILE NAME: | 22-40 | 1B OF 1 |

DIRECTIONAL WELL PLAT (COGCC) / MULTI-WELL PLAN (OGED)
SECTION 35, T2N, R65W & SECTIONS 2 & 11, T1N, R65W



WELL PAD - LABRISA 11-35HZ

DIRECTIONAL WELL PLAT (COGCC) /
MULTI-WELL PLAN (OGED)
LABRISA 35-1HZ, LABRISA 35-2HZ,
LABRISA 35-3HZ, LABRISA 35-4HZ,
LABRISA 35-5HZ, LABRISA 35-6HZ,
LABRISA 35-7HZ, LABRISA 35-8HZ,
LABRISA 35-9HZ & LABRISA 35-10HZ
LOCATED IN SECTION 35, T2N, R65W &
SECTIONS 2 & 11, T1N, R65W, 6TH P.M.
WELD COUNTY, COLORADO

Kerr-McGee Oil &
Gas Onshore LP
1099 18th Street
Denver, Colorado 80202



CONSULTING, LLC

SHERIDAN OFFICE
1095 Saberton Avenue
Sheridan, Wyoming 82801
Phone 307-674-0609

LOVELAND OFFICE
6706 North Franklin Avenue
Loveland, Colorado 80538
Phone 970-776-4331

| | | | |
|---------------|---------|----------------|---------|
| DRAFTED BY: | SJM | CHECKED BY: | RKF |
| DATE DRAFTED: | 9/9/22 | DATE SURVEYED: | 7/25/22 |
| REVISED: | 9/20/22 | FILE NAME: | 22-40 |

SHEET NO:
1C
1C OF 1