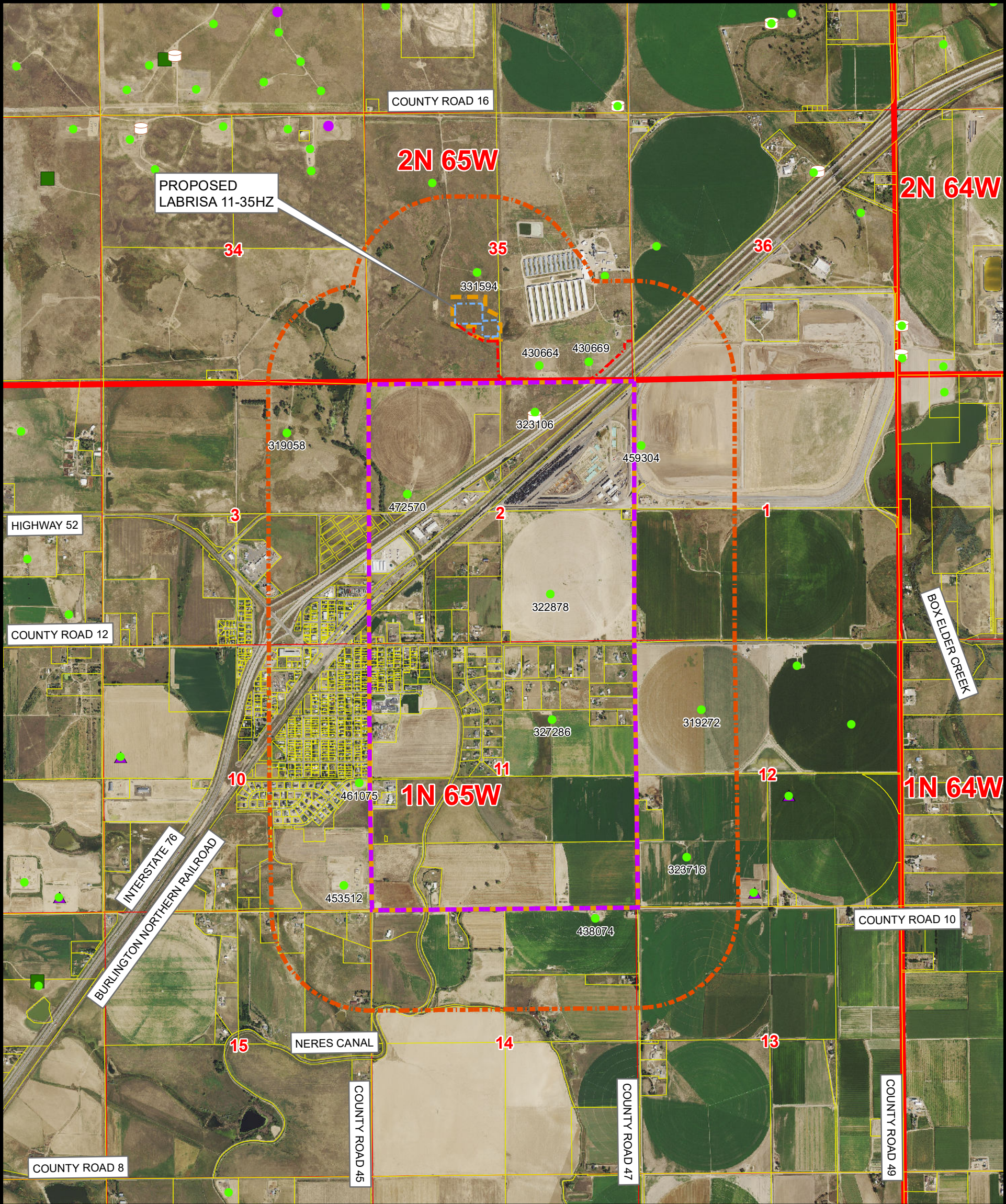


RELATED LOCATION & FLOWLINE MAP  
**LABRISA 11-35HZ**  
SECTION 35, TOWNSHIP 2 NORTH, RANGE 65 WEST, 6TH P.M., WELD COUNTY, COLORADO



**Legend**

- PROPOSED WORKING PAD SURFACE
- PROPOSED MINERAL BOUNDARY
- PROPOSED OGDG BOUNDARY
- 2000' BUFFER - PROPOSED OGDG BOUNDARY
- PROPOSED ACCESS ROAD
- PARCEL BOUNDARY
- ACTIVE LOCATION
- TANK BATTERY
- VISIBLE LOCATION ON AERIAL NOT IN COGCC GIS

- CLOSED PIT
- PENDING LOCATION PERMIT (FORM 2A)
- APPROVED LOCATION PERMIT (FORM 2A)
- APPROVED WELL PERMIT (FORM 2)
- PENDING WELL PERMIT (FORM 2)
- WELD OIL AND GAS LOCATION ASSESSMENT (WOGLA)

**Kerr-McGee Oil & Gas Onshore LP**

1099 18th Street  
Denver, Colorado 80202



Consulting, LLC

LOVELAND OFFICE  
6706 North Franklin Avenue  
Loveland, Colorado 80538  
Phone 970-776-4331  
SHERIDAN OFFICE  
1095 Saberton Avenue  
Sheridan, Wyoming 82801  
Phone 307-674-0609

N  
NAD83 CO-Nft  
1" = 2,000ft  
0 1,000 2,000

Drawn by: BB  
Revised:  
Date: 17 Aug 2022  
Date:

Sheet:  
1 of 2



RELATED LOCATION & FLOWLINE MAP

LABRISA 11-35HZ

SECTION 35, TOWNSHIP 2 NORTH, RANGE 65 WEST, 6TH P.M., WELD COUNTY, COLORADO

| LOCATION ID | LOCATION NAME          | LOCATION NUMBER | OPERATOR NAME                         |
|-------------|------------------------|-----------------|---------------------------------------|
| 319058      | YOUNG, EARL-61N65W     | 3NWN            | KERR MCGEE OIL & GAS ONSHORE LP       |
| 319272      | RINGSBY-61N65W         | 12CNW           | KP KAUFFMAN COMPANY INC               |
| 322878      | RUEBEL-61N65W          | 2SWSE           | KP KAUFFMAN COMPANY INC               |
| 323106      | MCGILL-61N65W          | 2NWN            | KP KAUFFMAN COMPANY INC               |
| 323716      | WUERTZ-61N65W          | 12SWSW          | KP KAUFFMAN COMPANY INC               |
| 327286      | HUDSON-61N65W          | 11SWNE          | KERR MCGEE OIL & GAS ONSHORE LP       |
| 331594      | HUDSON-62N65W          | 35NESW          | KERR MCGEE OIL & GAS ONSHORE LP       |
| 430664      | SPARBOE                | 27C-26HZ        | KERR MCGEE OIL & GAS ONSHORE LP       |
| 430669      | SPARBOE                | 1N-26HZ         | KERR MCGEE OIL & GAS ONSHORE LP       |
| 438074      | AMEN                   | PAD             | VERDAD RESOURCES LLC                  |
| 453512      | HDI KF                 | 01-65-10 PAD    | VERDAD RESOURCES LLC                  |
| 459304      | UPRR-RICKETSON-61N65W  | 1NWNW           | VERDAD RESOURCES LLC                  |
| 461075      | PERRY                  | 1               | VERDAD RESOURCES LLC                  |
| 472570      | HUDSON FACILITY 61N65W | 2SWNW           | CRESTONE PEAK RESOURCES OPERATING LLC |

Kerr-McGee Oil &  
Gas Onshore LP

1099 18th Street  
Denver, Colorado 80202



609  
Consulting, LLC

LOVELAND OFFICE  
6706 North Franklin Avenue  
Loveland, Colorado 80538  
Phone 970-776-4331

SHERIDAN OFFICE  
1095 Saberton Avenue  
Sheridan, Wyoming 82801  
Phone 307-674-0609

Drawn by: BB  
Revised:

Date: 17 Aug 2022  
Date: