


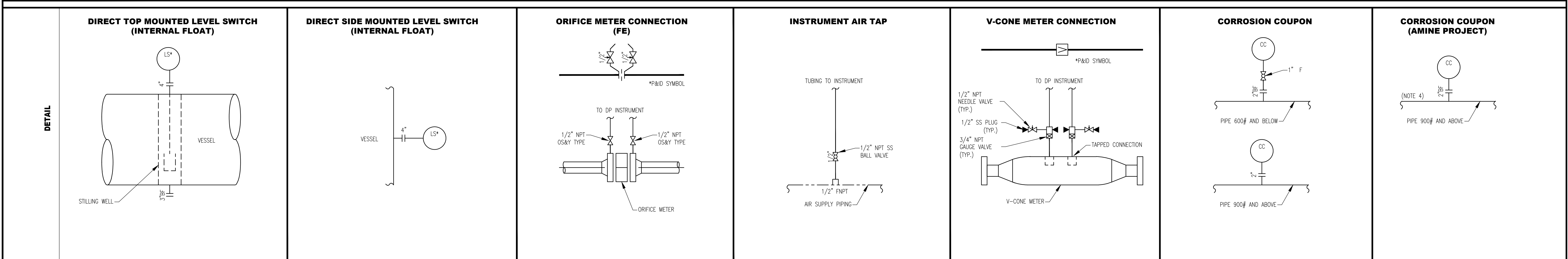
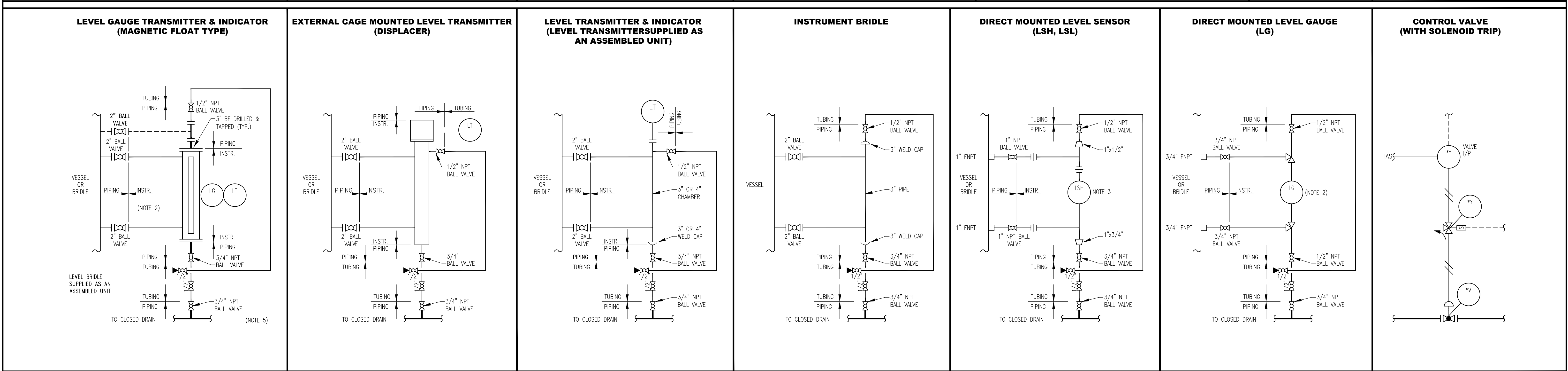
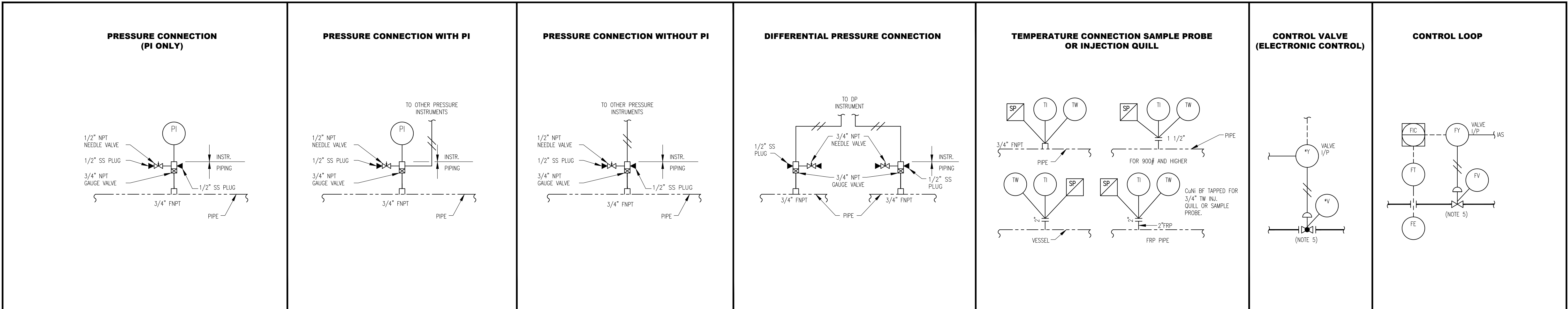
THIS DRAWING AND THE DESIGN IT COVERS ARE CONFIDENTIAL AND REMAIN THE PROPERTY OF ANADARKO PETROLEUM CORPORATION AND SHALL NOT BE DISCLOSED TO OTHERS OR REPRODUCED IN ANY MANNER OR USED FOR ANY PURPOSE WHATSOEVER EXCEPT BY WRITTEN PERMISSION BY THE OWNER.

TANKS	VESSELS		EXCHANGERS		PUMPS						
FLAT ROOF	VERTICAL VESSEL	VERTICAL VESSEL WITH SKIRT	EXCHANGER - DOUBLE END		PUMP - VERTICAL (Y AXIS)						
			EXCHANGER - SINGLE END		PUMP - HORIZONTAL (Y AXIS)						
SLOPING ROOF	VERTICAL VESSEL WITH CONE	VERTICAL VESSEL WITH SKIRT & CONE	EXCHANGER - DOUBLE END KETTLE		PUMP - CENTRIFUGAL (Y AXIS)	PUMP - DUAL					
			EXCHANGER - SINGLE END KETTLE		PUMP - SUMP (Y AXIS)	PUMP - INLINE (Y AXIS)					
FLOATING ROOF	VERTICAL FLAT BOTTOM VESSEL	HORIZONTAL VESSEL	EXCHANGER - SUPER	EXCHANGER - PROCESS FLOW	PUMP - ROTARY	PUMP - VACUUM					
			LEAN/RICH AMINE EXCHANGER	FUEL GAS HEATER	PUMP - WITH STEAM TURBINE	PUMP - AIR OPERATED PUMP					
	HORIZONTAL VESSEL WITH ECCENTRIC	CENTRIFUGAL COMPRESSOR	AFTER COOLER WITH MOTOR		PUMP - DIAPHRAM	PULSATION DAMPENER					
					MOTOR						
					EQUIPMENT TAG						
					TAG DESC - - - - TAG						
NOTES:	REFERENCE DRAWINGS		REVISIONS			<div></div> <div>OXY STANDARD</div>		PIPING & INSTRUMENTATION DIAGRAM EQUIPMENT LEGEND			
						DRAWN BY: MJ		CREATION DATE: --		AFE No.:	
						APPROVED: --		APPR. DATE: --			
						SCALE: NONE		DWG. No.: OXY-PID-STD-00011		SHEET No. 2 OF 4	

FILE LOCATION: L:\SharedData\Denver\Rockies\CDWGS\LEGENDS\OXY-PID-STD-00011.dwg

PLOT STYLE: ----

LAST SAVED: 1/8/2020 BY: user: PabS@arpc

[illegible]


FILE LOCATION: L:\SharedData\Denver\RockiesFC\DWGS\LEGENDS\OXY-PID-STD-00013.dwg
LAST SAVED: 1/8/2020 BY: Max Pashchenko


THIS DRAWING AND THE DESIGN IT COVERS ARE CONFIDENTIAL AND REMAIN THE PROPERTY OF ANADARKO PETROLEUM CORPORATION AND SHALL NOT BE DISCLOSED TO OTHERS OR REPRODUCED IN ANY MANNER OR USED FOR ANY PURPOSE WHATSOEVER EXCEPT BY WRITTEN PERMISSION BY THE OWNER.


SK-15400
WELLHEAD MANIFOLD
(1 PACK)

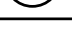
SK-15100-15300
WELLHEAD MANIFOLD
(3 PACK)

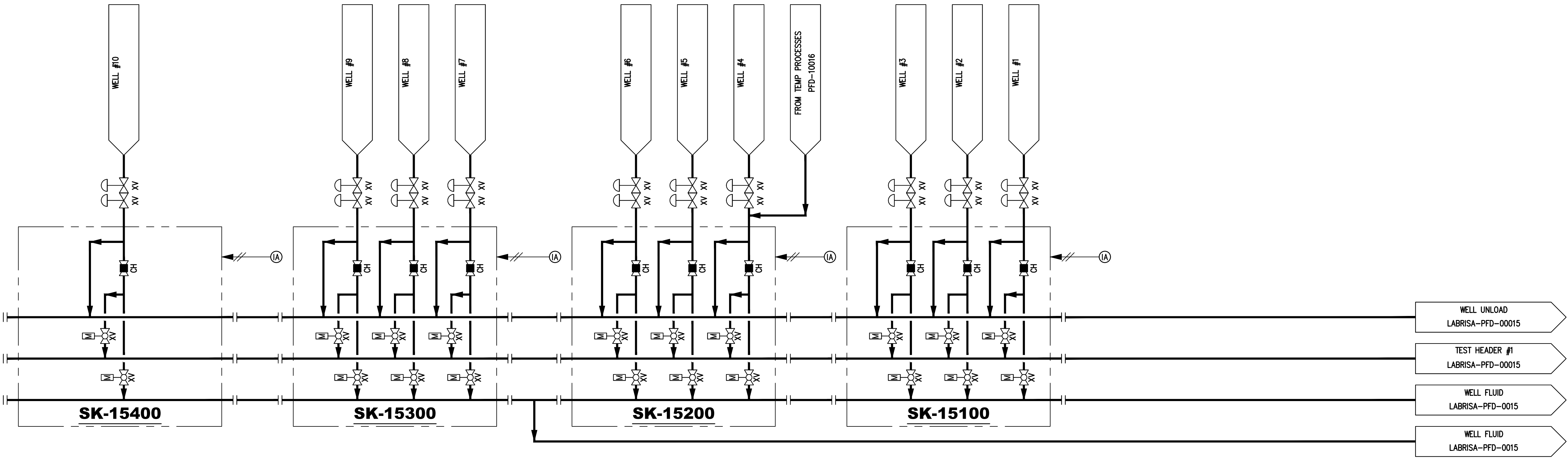
ABBREVIATIONS/SYMBOLS

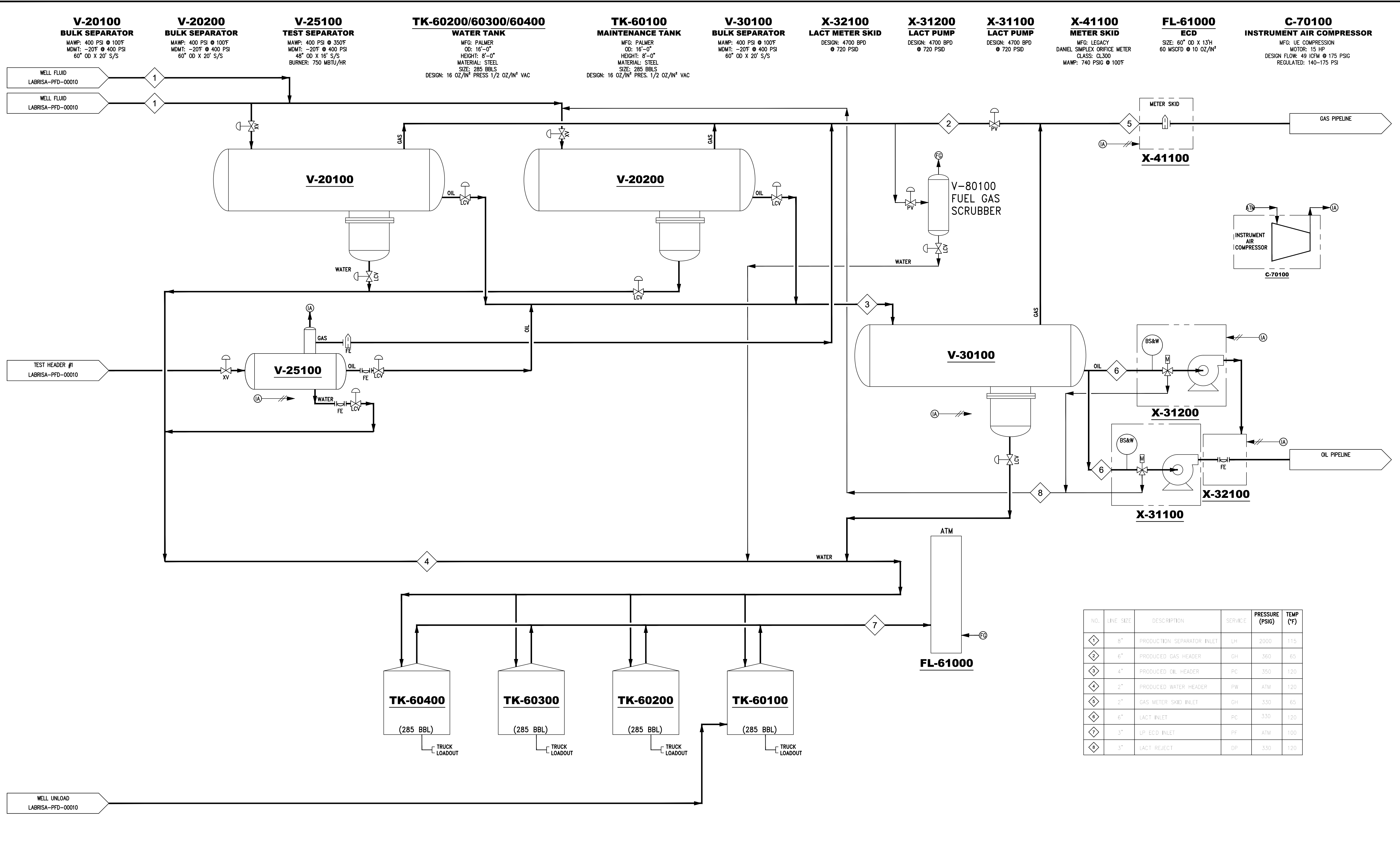
 STREAM NUMBER

 TO OR FROM INSTRUMENT AIR SYSTEM

 TO OR FROM FUEL GAS SYSTEM

 TO OR FROM ATMOSPHERE





NO.	LINE SIZE	DESCRIPTION	SERVICE	PRESSURE (PSIG)	TEMP (°F)
1	8"	PRODUCTION SEPARATOR INLET	LH	2000	115
2	6"	PRODUCED GAS HEADER	GH	360	65
3	4"	PRODUCED OIL HEADER	PC	350	120
4	2"	PRODUCED WATER HEADER	PW	ATM	120
5	2"	GAS METER SKID INLET	CH	330	65
6	6"	LACT INLET	PC	330	120
7	3"	L.P. ECD INLET	PF	ATM	100
8	3"	LACT REJECT	DP	330	120

NOTES:

REFERENCE DRAWINGS		REVISIONS					
DWG. NO.	TITLE	NO.	ISSUED FOR PERMIT	TCT BY	07/28/22 DATE	JTK CHK.	07/28/22 DATE
				JTK APPR.	07/28/22 DATE		

Kerr-McGee Oil & Gas Onshore LP

LABRISA

PROCESS FLOW DIAGRAM

PRODUCTION FACILITY

DRAWN BY: TCT	CREATION DATE: 07/27/22	AFE No.: -
APPROVED: JTK	APPR. DATE: 07/27/22	
SCALE: -	DWG. No.: LABRISA-PFD-00015	SHEET No. - OF - 