



Terra Energy Partners, LLC

SURFACE POST JOB REPORT

WMC 44-24-794 05-045-24544
S:19 T:7S R:93W Garfield CO

CallSheet #: 85609
Proposal #: 66587



SURFACE Post Job Report

Attention: Mr. Dustin Childers | (936) 524-8828 | dchilders@terraep.com
Terra Energy Partners, LLC
4828 Loop Central Dr., Suite 900 | Houston, TX 77081

Dear Mr. Dustin Childers,

Thank you for the opportunity to provide cementing services on this well. American Cementing strives to achieve complete customer satisfaction. If you have any questions regarding the services or data provided, please contact American Cementing at any time.

Sincerely,

Krystal Schell

Field Engineer I | (719) 992-1830 | krystal.schell@americacementing.com

Field Office 28730 US-6, Rifle, CO 81650
Phone: (970) 657-1157

Job Details & Summary

Geometry

Type	Function	OD (in)	ID (in)	Weight (lb/ft)	Thread	Top (ft)	Bottom (ft)	Excess (%)
Casing	Outer	20	19.5	53	n/a	0	80	0
Open Hole	Outer	n/a	13.5	n/a	n/a	80	500	16
Open Hole	Outer	n/a	13.5	n/a	n/a	500	1171	16
Casing	Inner	9.625	8.921	36	n/a	0	1171	0

Equipment / People

Unit Type	Unit	Power Unit	Employee #1
Cement Trailer Float	CTF-249	TRC-202	Balint, Daniel
Cement Pump Float	CPF-053	TRH-1140	Kirchenwitz, Jacob
Light Duty Vehicles	LDV-083		Putnam, Gage

Timing

Event	Date/Time
ERTS	00/30/2023 00:00
Call Out	1/30/2023 19:40
Depart Facility	1/31/2023 00:30
On Location	1/31/2023 02:40
Rig Up Iron	1/31/2023 05:00
Job Started	1/31/2023 09:28
Job Completed	1/31/2023 12:23
Rig Down Iron	1/31/2023 12:40
Depart Location	1/31/2023 14:30

General Job Information

Metrics	Value
Well Fluid Density	9.2 lb/gal
Well Fluid Type	WBM
Rig Circulation Vol	207 bbls
Rig Circulation Time	0.5 hours
Calculated Displacement	87 bbls
Actual Displacement	87 bbls
Total Spacer to Surface	20 bbls
Total CMT to Surface	40 bbls
Well Topped Out	No

Job Details

Metrics	Value
Flare Prior to Job	No
Flare Prior to Job	0 units
Flare During Job	No
Flare During Job	0 units
Flare at End of Job	No
Flare at End of Job	0 units
Well Full Prior to Job	Yes
Well Fluid Density Into Well	9.2 lb/gal
Well Fluid Density Out of Well	9.2 lb/gal

Job Details (cont.)

Metrics	Value
BHCT	81 °F
BHST	99 °F

Water Analysis

Metrics	Value	Recommended
Water Source	Upright Rig Tank	
Temperature	51 °F	50-80 °F
pH Level	7	5.5-8.5
Chlorides	286 mg/L	0-3000 mg/L
Total Alkalinity	120	0-1000
Total Hardness	425 mg/L	0-500 mg/L
Carbonates	NA mg/L	0-100 mg/L
Sulfates	<200 mg/L	0-1500 mg/L
Potassium	450 mg/L	0-3000 mg/L
Iron	0 mg/L	0-300 mg/L

Circulation

Lost Circulation Experienced

No

Job Execution Information

Fluid	Product	Function	Density (lb/gal)	Yield (ft ³ /sk)	Water Rq. (gal/sk)	Water Rq. (gal/bbl)	Volume (sks)	Volume (bbl)	Designed Top (ft)
1	Water	Flush	8.34			42.00		20.00	0
2	Lead	Lead	12.30	2.21	12.72		165.00	65.04	0
3	Tail	Tail	12.80	1.97	10.87		194.00	67.90	500
4	Water	DisplacementFinal	8.34			42.00		87.00	0

Job Fluid Details

Fluid	Type	Fluid	Product	Function	Conc.	Uom
2	Lead	Lead	ASTM TYPE I/II	Cement	100.00	%
2	Lead	Lead	A-7P	Accelerator	2.00	lb/sk
2	Lead	Lead	ATHX-1102	Thixotropic	1.00	lb/sk
2	Lead	Lead	FP-24	Defoamer	0.30	%BWOB
2	Lead	Lead	IntegraSeal POLI	LostCirculation	0.25	lb/sk
2	Lead	Lead	STATIC FREE	Other	0.01	lb/sk
3	Tail	Tail	ASTM TYPE I/II	Cement	100.00	%
3	Tail	Tail	A-7P	Accelerator	2.00	lb/sk
3	Tail	Tail	ATHX-1102	Thixotropic	1.00	lb/sk
3	Tail	Tail	FP-24	Defoamer	0.30	%BWOB
3	Tail	Tail	IntegraSeal POLI	LostCirculation	0.25	lb/sk
3	Tail	Tail	STATIC FREE	Other	0.01	lb/sk

Job Logs

Line	Event	Date (MM/DD/YY)	Time (HH:MM)	Density (lb/gal)	Pump Rate (bpm)	Pump Volume (bbls)	Pipe Pressure (psi)	Comment
1	Callout	1/30/2023	19:40					CREW CALLED OUT FOR ON LOCATION TIME OF 03:00 01/31/2023
2	Depart Location	1/31/2023	00:30					CREW DEPARTS FOR RIG LOCATION
3	Arrive On Location	1/31/2023	02:40					CREW ARRIVES ON LOCATION
4	Rig Up Iron	1/31/2023	03:00					RIG UP IRON AND HOSES
5	Waiting	1/31/2023	03:30					WAITING FOR RIG TO FINISH RUNNING CASING
6	Safety Meeting	1/31/2023	08:56					JSA SAFETY MEETING WITH AC, RIG CREW, AND CUSTOMER REP
7	Fill Lines	1/31/2023	09:28	8.34	2.3	5	157	FILL LINES WITH 5 BBLS FRESH WATER
8	Pressure Test Lines	1/31/2023	09:30				3750	PRESSURE TEST PUMP AND LINES TO 3000 PSI
9	Other	1/31/2023	09:34	8.34	5	15	271	PUMP 15 BBLS FRESH WATER FLUSH
10	Pump Lead Cement	1/31/2023	09:39	12.3	0	5	0	JET SENT FROM BULK TRUCK SUCCESSFULLY, AND BEGAN BATCHING UP CEMENT. SMALL INCREASE IN DENSITY THEN NO INCREASE. FOUND BLOCKAGE IN BULK LINE ON PUMP. PUMPED CEMENT FROM TUB TO PIT
11	Other	1/31/2023	10:06					RIG TOOK OVER AND PUMPED 386 BBLS WHILE CORRECTING BULK BLOCKAGE ISSUE
12	Fill Lines	1/31/2023	11:22	8.34	2	5	85	FILL LINES WITH 5 BBLS FRESH WATER
13	Pressure Test Lines	1/31/2023	11:26				3500	PRESSURE TEST PUMP AND LINES TO 3000 PSI
14	Other	1/31/2023	11:28	8.34	3	15	335	PUMP 15 BBLS FRESH WATER FLUSH
15	Pump Lead Cement	1/31/2023	11:34	12.3	3.5	0	158	BEGIN PUMPING 12.3 PPG LEAD CEMENT, DENSITY VERIFIED WITH PRESSURIZED MUD SCALE.
16	Pump Lead Cement	1/31/2023	11:47	12.3	4	65	222	PUMPED 65 BBLS LEAD CEMENT
17	Pump Tail Cement	1/31/2023	12:03	12.8	4	0	230	BEGIN PUMPING 12.8 PPG TAIL CEMENT, DENSITY VERIFIED WITH PRESSURIZED MUD SCALE
18	Pump Tail Cement	1/31/2023	12:03	12.8	5	67.9	333	PUMPED 67.9 BBLS TAIL CEMENT
19	Clean Pumps and Lines	1/31/2023	12:03					WASH UP PUMP, WASHED UP ON PLUG
20	Drop Top Plug	1/31/2023	12:08	8.34	5	0	395	DROP PLUG, WITNESSED BY CUSTOMER REP. BEGIN DISPLACEMENT
21	Cement Back to Surface	1/31/2023	12:17	8.34	8	47	690	CEMENT TO SURFACE AT 47 BBLS FRESH WATER DISPLACEMENT PUMPED. 40 BBLS CEMENT TO SURFACE
22	Pump Displacement	1/31/2023	12:23	8.34	4	40	430	87 BBLS FRESH WATER DISPLACEMENT PUMED
23	Land Plug	1/31/2023	12:23				1075	PLUG LANDED. FCP - 430 PSI, BUMPED TO 1075 PSI
24	Check Floats	1/31/2023	12:24					CHECK FLOATS, FLOATS HELD, 0.5 BBLS BACK
25	Other	1/31/2023	12:30					BLOW DOWN IRON, PICKLE PUMP
26	Rig Down Iron	1/31/2023	12:40					RIG DOWN IRON AND HOSES
27	Depart Location	1/31/2023	14:30					AC CREW DEPARTS LOCATION

Pump Diagrams

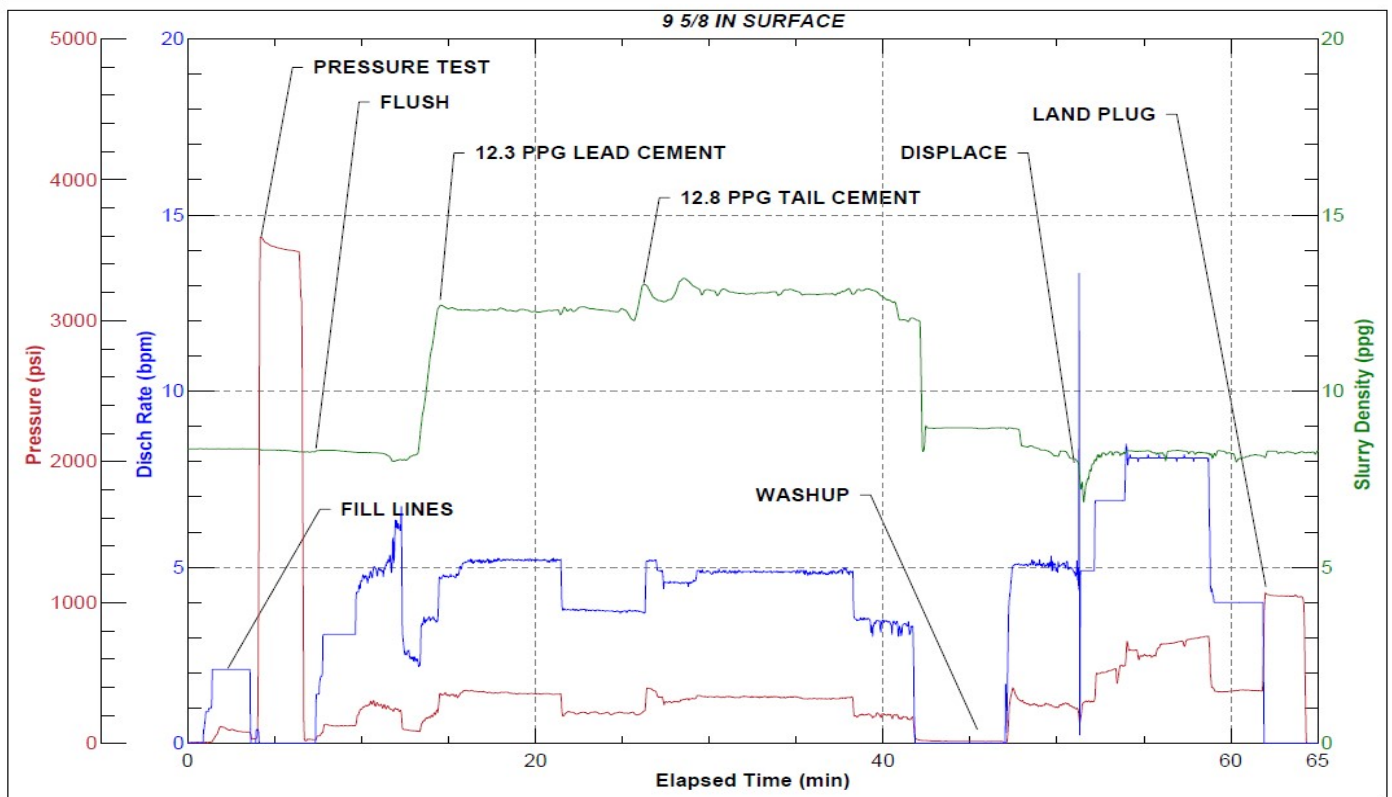


JobMaster Program Version 5.01C1

Job Number: 85609

Customer: Terra

Well Name: WMC 44-24-794



Job Start: Tuesday, January 31, 2023