



Terra Energy Partners, LLC

SURFACE POST JOB REPORT

WMC 344-24-794 05-045-24537
S:19 T:7S R:93W Garfield CO

CallSheet #: 85453
Proposal #: 66335



SURFACE Post Job Report

Attention: Mr. Dustin Childers | (936) 524-8828 | dchilders@terraep.com
Terra Energy Partners, LLC
4828 Loop Central Dr., Suite 900 | Houston, TX 77081

Dear Mr. Dustin Childers,

Thank you for the opportunity to provide cementing services on this well. American Cementing strives to achieve complete customer satisfaction. If you have any questions regarding the services or data provided, please contact American Cementing at any time.

Sincerely,

Krystal Schell

Field Engineer I | (719) 992-1830 | krystal.schell@americacementing.com

Field Office 28730 US-6, Rifle, CO 81650
Phone: (970) 657-1157

Job Details & Summary

Geometry

Type	Function	OD (in)	ID (in)	Weight (lb/ft)	Thread	Top (ft)	Bottom (ft)	Excess (%)
Casing	Outer	20	19.5	53	n/a	0	110	0
Open Hole	Outer	n/a	13.5	n/a	n/a	110	500	16
Open Hole	Outer	n/a	13.5	n/a	n/a	500	1174	16
Casing	Inner	9.625	8.921	36	n/a	0	1174	0

Equipment / People

Unit Type	Unit	Power Unit	Employee #1
Cement Trailer Float	CTF-242	TRC-249	Mendoza, Victor
Light Duty Vehicles	LDV-083		Putnam, Gage
Cement Pump Float	CPF-012	TRH-964	Gonzales, Ivan
Cement Utility Float	CUF-164	LDV-088	Burton, Devin

Timing

Event	Date/Time
ERTS	00/16/2023 00:00
Call Out	1/16/2023 09:30
Depart Facility	1/16/2023 11:30
On Location	1/16/2023 13:00
Rig Up Iron	1/16/2023 13:15
Job Started	1/16/2023 20:19
Job Completed	1/16/2023 21:09
Rig Down Iron	1/16/2023 21:45
Depart Location	1/16/2023 22:45

General Job Information

Metrics	Value
Well Fluid Density	9.15 lb/gal
Well Fluid Type	WBM
Rig Circulation Vol	300 bbls
Rig Circulation Time	0.5 hours
Calculated Displacement	87.4 bbls
Actual Displacement	87.4 bbls
Total Spacer to Surface	20 bbls
Total CMT to Surface	42 bbls
Well Topped Out	No

Job Details

Metrics	Value
Flare Prior to Job	No
Flare Prior to Job	0 units
Flare During Job	No
Flare During Job	0 units
Flare at End of Job	No
Flare at End of Job	0 units
Well Full Prior to Job	Yes
Well Fluid Density Into Well	9.15 lb/gal
Well Fluid Density Out of Well	9.15 lb/gal

Job Details (cont.)

Metrics	Value
BHCT	81 °F
BHST	99 °F

Water Analysis

Metrics	Value	Recommended
Water Source	Upright Rig Tank	
Temperature	50 °F	50-80 °F
pH Level	7	5.5-8.5
Chlorides	72 mg/L	0-3000 mg/L
Total Alkalinity	120	0-1000
Total Hardness	80 mg/L	0-500 mg/L
Carbonates	NA mg/L	0-100 mg/L
Sulfates	200 mg/L	0-1500 mg/L
Potassium	450 mg/L	0-3000 mg/L
Iron	0 mg/L	0-300 mg/L

Circulation

Lost Circulation Experienced

No

Job Execution Information

Fluid	Product	Function	Density (lb/gal)	Yield (ft ³ /sk)	Water Rq. (gal/sk)	Water Rq. (gal/bbl)	Volume (sks)	Volume (bbl)	Designed Top (ft)
1	Water	Flush	8.34			42.00		20.00	0
2	Lead	Lead	12.30	2.21	12.72		165.00	65.04	0
3	Tail	Tail	12.80	1.97	10.87		197.00	68.95	500
4	Water	DisplacementFinal	8.34			42.00		87.40	0

Job Fluid Details

Fluid	Type	Fluid	Product	Function	Conc.	Uom
2	Lead	Lead	ASTM TYPE I/II	Cement	100.00	%
2	Lead	Lead	A-7P	Accelerator	2.00	lb/sk
2	Lead	Lead	ATHX-1102	Thixotropic	1.00	lb/sk
2	Lead	Lead	FP-24	Defoamer	0.30	%BWOB
2	Lead	Lead	IntegraSeal POLI	LostCirculation	0.25	lb/sk
2	Lead	Lead	STATIC FREE	Other	0.01	lb/sk
3	Tail	Tail	ASTM TYPE I/II	Cement	100.00	%
3	Tail	Tail	A-7P	Accelerator	2.00	lb/sk
3	Tail	Tail	ATHX-1102	Thixotropic	1.00	lb/sk
3	Tail	Tail	FP-24	Defoamer	0.30	%BWOB
3	Tail	Tail	IntegraSeal POLI	LostCirculation	0.25	lb/sk
3	Tail	Tail	STATIC FREE	Other	0.01	lb/sk

Job Logs

Line	Event	Date (MM/DD/YY)	Time (HH:MM)	Density (lb/gal)	Pump Rate (bpm)	Pump Volume (bbls)	Pipe Pressure (psi)	Comment
1	Callout	1/16/2023	09:30					CREW CALLED OUT FOR ON LOCATION TIME OF 13:30 01/16/2023
2	Depart Location	1/16/2023	11:30					CREW DEPARTS FOR RIG LOCATION
3	Arrive On Location	1/16/2023	13:00					CREW ARRIVES ON LOCATION
4	Rig Up Iron	1/16/2023	13:15					RIG UP IRON AND HOSES
5	Waiting	1/16/2023	13:45					WAITING FOR RIG TO FINISH RUNNING CASING
6	Safety Meeting	1/16/2023	19:40					JSA SAFETY MEETING WITH AC, RIG CREW, AND CUSTOMER REP
7	Fill Lines	1/16/2023	20:19	8.34	2	5	125	FILL LINES WITH 5 BBLS FRESH WATER
8	Pressure Test Lines	1/16/2023	20:22				3300	PRESSURE TEST PUMP AND LINES TO 3000 PSI
9	Other	1/16/2023	20:25	8.34	5	15	320	PUMP 15 BBLS FRESH WATER FLUSH
10	Pump Lead Cement	1/16/2023	20:29	12.3	5	0	370	BEGIN PUMPING 12.3 PPG LEAD CEMENT, DENSITY VERIFIED WITH PRESSURIZED MUD SCALE.
11	Pump Lead Cement	1/16/2023	20:39	12.3	7	65	644	PUMPED 65 BBLS LEAD CEMENT
12	Pump Tail Cement	1/16/2023	20:39	12.8	5	0	381	BEGIN PUMPING 12.8 PPG TAIL CEMENT, DENSITY VERIFIED WITH PRESSURIZED MUD SCALE
13	Pump Tail Cement	1/16/2023	20:51	12.8	7	69	700	PUMPED 69 BBLS TAIL CEMENT
14	Clean Pumps and Lines	1/16/2023	20:51					WASH UP PUMP, WASHED UP ON PLUG
15	Drop Top Plug	1/16/2023	20:56	8.34	5	0	401	DROP PLUG, WITNESSED BY CUSTOMER REP. BEGIN DISPLACEMENT
16	Cement Back to Surface	1/16/2023	21:02	8.34	9	45.4	940	CEMENT TO SURFACE AT 45.4 BBLS FRESH WATER DISPLACEMENT PUMPED. 42 BBLS CEMENT TO SURFACE
17	Pump Displacement	1/16/2023	21:09	8.34	4	42	457	87.4 BBLS FRESH WATER DISPLACEMENT PUMED
18	Land Plug	1/16/2023	21:09				1040	PLUG LANDED. FCP - 457 PSI, BUMPED TO 1040 PSI
19	Check Floats	1/16/2023	21:12					CHECK FLOATS, FLOATS HELD, 0.5 BBLS BACK
20	Other	1/16/2023	21:20					BLOW DOWN IRON, PICKLE PUMP
21	Rig Down Iron	1/16/2023	21:45					RIG DOWN IRON AND HOSES
22	Depart Location	1/16/2023	22:45					AC CREW DEPARTS LOCATION

Pump Diagrams

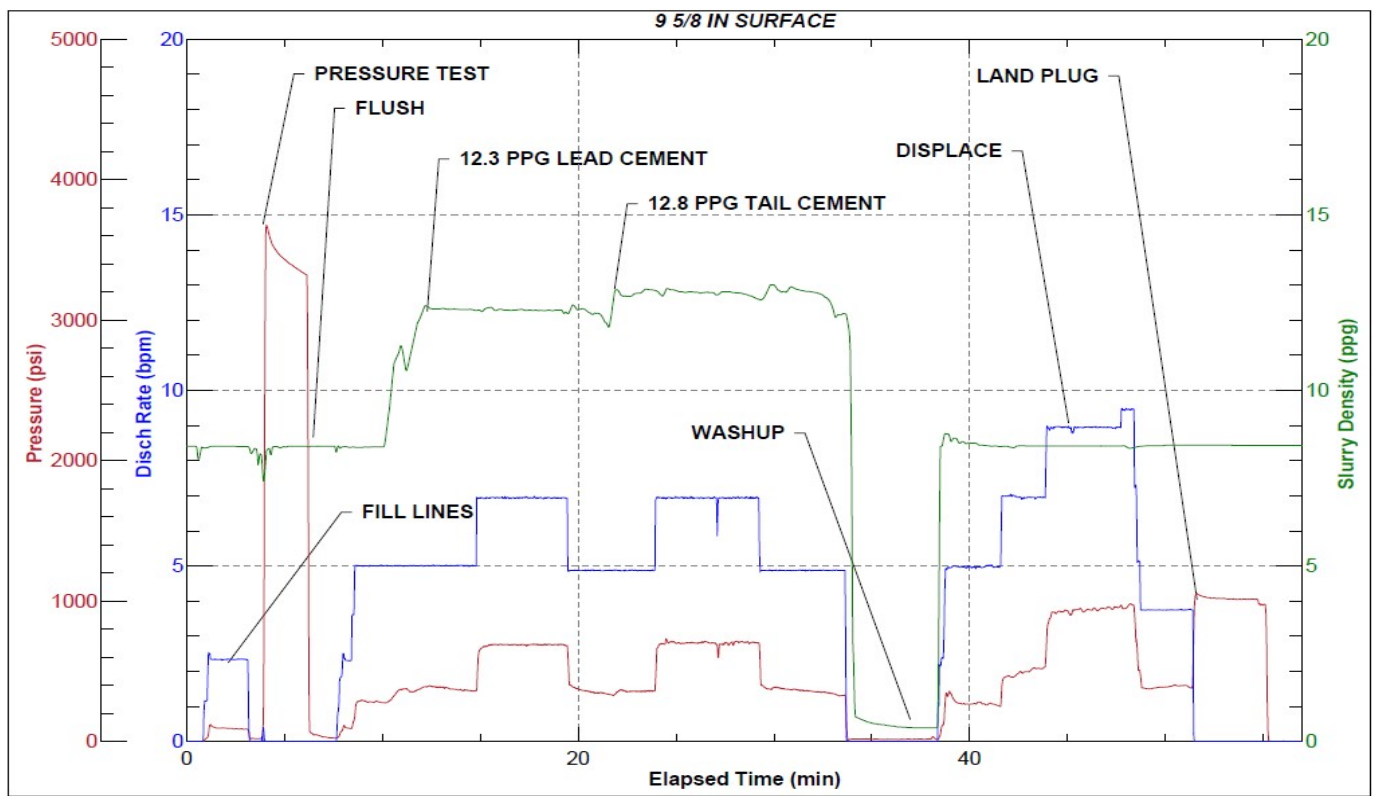


JobMaster Program Version 5.01C1

Job Number: 85453

Customer: Terra

Well Name: WMC 344-24-794



Job Start: Monday, January 16, 2023