



---

# **Terra Energy Partners, LLC**

## **SURFACE POST JOB REPORT**

**WMC 444-24-794 05-045-24542**  
**S:19 T:7S R:93W Garfield CO**

CallSheet #: 85528  
Proposal #: 66474



**SURFACE Post Job Report**

**Attention:** Mr. Dustin Childers | (936) 524-8828 | dchilders@terraep.com  
Terra Energy Partners, LLC  
4828 Loop Central Dr., Suite 900 | Houston, TX 77081

---

Dear Mr. Dustin Childers,

Thank you for the opportunity to provide cementing services on this well. American Cementing strives to achieve complete customer satisfaction. If you have any questions regarding the services or data provided, please contact American Cementing at any time.

Sincerely,

**Raymond Burron**

Field Engineer I | (307) 631-6340 | raymond.burron@americacementing.com

**Field Office**      28730 US-6, Rifle, CO 81650  
Phone: (970) 657-1157

## Job Details & Summary

### Geometry

Type	Function	OD (in)	ID (in)	Weight (lb/ft)	Thread	Top (ft)	Bottom (ft)	Excess (%)
Casing	Outer	20	19.5	53	n/a	0	110	0
Open Hole	Outer	n/a	13.5	n/a	n/a	110	500	16
Open Hole	Outer	n/a	13.5	n/a	n/a	500	1145	16
Casing	Inner	9.625	8.921	36	n/a	0	1145	0

### Equipment / People

Unit Type	Unit	Power Unit	Employee #1
Cement Trailer Float	CTF-161	TRC-249	Richey, Steven
Light Duty Vehicles	LDV-061		Woronovitch, Collin
Cement Pump Float	CPF-136	TRH-855	Bradbrook, Jeremy

### Timing

Event	Date/Time
ERTS	00/23/2023 00:00
Call Out	1/22/2023 18:30
Depart Facility	1/22/2023 23:30
On Location	1/22/2023 23:45
Rig Up Iron	1/23/2023 00:00
Job Started	1/23/2023 05:40
Job Completed	1/23/2023 07:18
Rig Down Iron	1/23/2023 07:45
Depart Location	1/23/2023 09:30

### General Job Information

Metrics	Value
Well Fluid Density	9 lb/gal
Well Fluid Type	WBM
Rig Circulation Vol	420 bbls
Rig Circulation Time	2 hours
Calculated Displacement	85 bbls
Actual Displacement	85 bbls
Total Spacer to Surface	20 bbls
Total CMT to Surface	35 bbls
Well Topped Out	No

### Job Details

Metrics	Value
Flare Prior to Job	No
Flare Prior to Job	0 units
Flare During Job	No
Flare During Job	0 units
Flare at End of Job	No
Flare at End of Job	0 units
Well Full Prior to Job	Yes
Well Fluid Density Into Well	9 lb/gal
Well Fluid Density Out of Well	9 lb/gal

### Job Details (cont.)

Metrics	Value
BHCT	81 °F
BHST	99 °F

### Water Analysis

Metrics	Value	Recommended
Water Source	Upright Rig Tank	
Temperature	65 °F	50-80 °F
pH Level	7	5.5-8.5
Chlorides	400 mg/L	0-3000 mg/L
Total Alkalinity	220	0-1000
Total Hardness	120 mg/L	0-500 mg/L
Carbonates	NA mg/L	0-100 mg/L
Sulfates	140 mg/L	0-1500 mg/L
Potassium	200 mg/L	0-3000 mg/L
Iron	0 mg/L	0-300 mg/L

## Circulation

Lost Circulation Experienced

No

## Job Execution Information

Fluid	Product	Function	Density (lb/gal)	Yield (ft <sup>3</sup> /sk)	Water Rq. (gal/sk)	Water Rq. (gal/bbl)	Volume (sks)	Volume (bbl)	Designed Top (ft)
1	Water	Flush	8.34			42.00		20.00	0
2	Lead	Lead	12.30	2.21	12.72		165.00	65.04	0
3	Tail	Tail	12.80	1.97	10.87		194.00	67.90	500
4	Water	DisplacementFinal	8.34			42.00		85.00	0

## Job Fluid Details

Fluid	Type	Fluid	Product	Function	Conc.	Uom
2	Lead	Lead	ASTM TYPE I/II	Cement	100.00	%
2	Lead	Lead	A-7P	Accelerator	2.00	lb/sk
2	Lead	Lead	ATHX-1102	Thixotropic	1.00	lb/sk
2	Lead	Lead	FP-24	Defoamer	0.30	%BWOB
2	Lead	Lead	IntegraSeal POLI	LostCirculation	0.25	lb/sk
2	Lead	Lead	STATIC FREE	Other	0.01	lb/sk
3	Tail	Tail	ASTM TYPE I/II	Cement	100.00	%
3	Tail	Tail	A-7P	Accelerator	2.00	lb/sk
3	Tail	Tail	ATHX-1102	Thixotropic	1.00	lb/sk
3	Tail	Tail	FP-24	Defoamer	0.30	%BWOB
3	Tail	Tail	IntegraSeal POLI	LostCirculation	0.25	lb/sk
3	Tail	Tail	STATIC FREE	Other	0.01	lb/sk

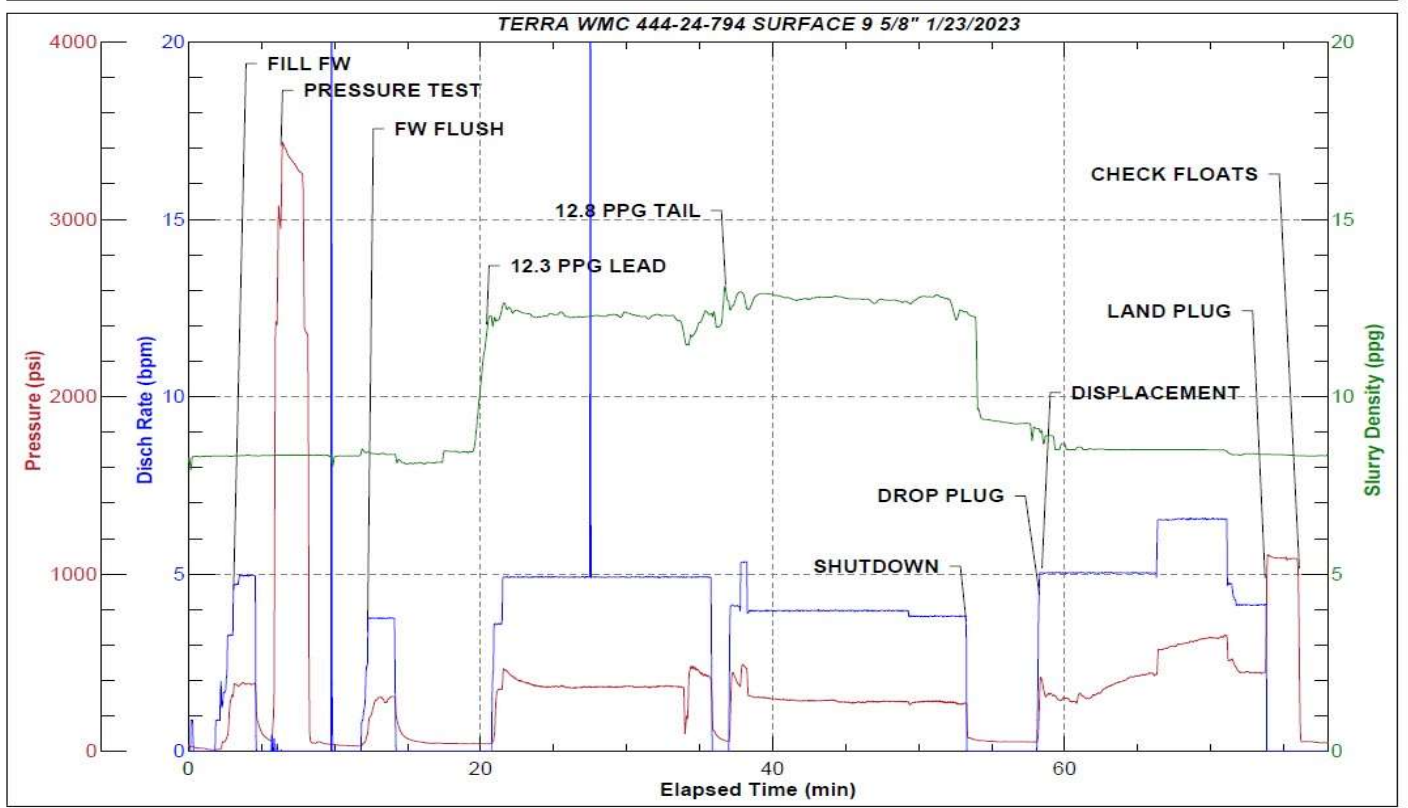
## Job Logs

Line	Event	Date (MM/DD/YY)	Time (HH:MM)	Density (lb/gal)	Pump Rate (bpm)	Pump Volume (bbls)	Pipe Pressure (psi)	Comment
1	Callout	1/22/2023	18:30					CREW CALLED OUT FOR LOCATION TIME OF 00:00 1/23
2	Depart Location	1/22/2023	23:30					CREW DEPARTS STAGING FOR RIG LOCATION
3	Arrive On Location	1/22/2023	23:45					CREW AND EQUIPMENT ARRIVED ON LOCATION
4	Rig Up Iron	1/23/2023	00:00					PRE RIG UP MEETING / RIG UP IRON HOSES AND EQUIPMENT. ON STANDBY WAITING FOR CASING TO FINISH BEING RAN. CASING LANDED @ 4:30
5	Safety Meeting	1/23/2023	05:40					PRE JOB SAFTEY MEETING WITH RIG CREW AND COMPANY MAN
6	Fill Lines	1/23/2023	06:03	8.34	5	10	390	FILL LINES WITH 10 BBLs OF FRESH WATER
7	Pressure Test Lines	1/23/2023	06:06	8.34			3400	PRESSURE TEST PUMP AND LINES TO 3000 PSI
8	Other	1/23/2023	06:13	8.34	4	10	285	PUMP 10 BBLs FRESH WATER SPACER FULL RETURNS
9	Pump Lead Cement	1/23/2023	06:20	12.3	5	0	426	BEGIN PUMPING 12.3 PPG LEAD CEMENT, WEIGHT VERIFIED BY MUD SCALE
10	Pump Lead Cement	1/23/2023	06:28	12.3	5	30	364	30 BBLs LEAD CEMENT PUMPED
11	Pump Lead Cement	1/23/2023	06:36	12.3	5	35	366	65 BBLs (165 SKS) LEAD CEMENT PUMPED FULL RETURNS
12	Pump Tail Cement	1/23/2023	06:36	12.8	4	0	400	BEGIN PUMPING 12.8 PPG TAIL CEMENT, WEIGHT VERIFIED BY MUD SCALE
13	Pump Tail Cement	1/23/2023	06:44	12.8	4	30	287	30 BBLs TAIL CEMENT PUMPED
14	Pump Tail Cement	1/23/2023	06:55	12.8	3.7	38	270	68 BBLs (194 SKS) TAIL CEMENT PUMPED FULL RETURNS.
15	Drop Top Plug	1/23/2023	06:59	8.34	5	0	300	DROP PLUG, WITNESSED BY COMPANY MAN. BEGIN PUMPING FRESH WATER DISPLACEMENT, FULL RETURNS
16	Pump Displacement	1/23/2023	07:04	8.34	5	20	350	20 BBLs DISPLACEMENT PUMPED, SPACER BACK @ 30 BBLs FULL RETURNS
17	Pump Displacement	1/23/2023	07:09	8.34	6.5	30	608	50 BBLs DISPLACEMENT PUMPED, CEMENT TO SURFACE @ 50 BBLs PUMPED, 35 BBLs TOTAL CEMENT TO SURFACE
18	Pump Displacement	1/23/2023	07:16	8.34	4	35	402	85 BBLs (CALCULATED) TOTAL DISPLACEMENT PUMPED
19	Land Plug	1/23/2023	07:16	8.34			1100	PLUG LANDED. FCP-502 PSI BUMP TO-1100 PSI
20	Check Floats	1/23/2023	07:18					BLEED OFF CHECK FLOATS, FLOATS HELD 1 BBLs BACK
21	Rig Down Iron	1/23/2023	07:45					PRE RIG DOWN SAFETY MEETING, PICKLE, BLOW DOWN IRON, RIG DOWN EQUIPMENT, IRON AND HOSES
22	Depart Location	1/23/2023	09:30					CREW DEPARTS LOCATION FOR RCO YARD

# Pump Diagrams



JobMaster Program Version 5.01C1  
Job Number: 85528  
Customer: TERRA  
Well Name: WMC 444-24-794



Job Start: Monday, January 23, 2023