



Terra Energy Partners, LLC

SURFACE POST JOB REPORT

WMC 433-19-793 05-045-24547
S:19 T:7S R:93W Garfield CO

CallSheet #: 85949
Proposal #: 67249



SURFACE Post Job Report

Attention: Mr. Dustin Childers | (936) 524-8828 | dchilders@terraep.com
Terra Energy Partners, LLC
4828 Loop Central Dr., Suite 900 | Houston, TX 77081

Dear Mr. Dustin Childers,

Thank you for the opportunity to provide cementing services on this well. American Cementing strives to achieve complete customer satisfaction. If you have any questions regarding the services or data provided, please contact American Cementing at any time.

Sincerely,

Krystal Schell

Field Engineer I | (719) 992-1830 | krystal.schell@americacementing.com

Field Office 28730 US-6, Rifle, CO 81650
Phone: (970) 657-1157

Job Details & Summary

Geometry

| Type | Function | OD (in) | ID (in) | Weight (lb/ft) | Thread | Top (ft) | Bottom (ft) | Excess (%) |
|-----------|----------|---------|---------|----------------|--------|----------|-------------|------------|
| Casing | Outer | 20 | 19.5 | 53 | n/a | 0 | 110 | 0 |
| Open Hole | Outer | n/a | 13.5 | n/a | n/a | 110 | 500 | 16 |
| Open Hole | Outer | n/a | 13.5 | n/a | n/a | 500 | 1142 | 16 |
| Casing | Inner | 9.625 | 8.921 | 36 | n/a | 0 | 1142 | 0 |

Equipment / People

| Unit Type | Unit | Power Unit | Employee #1 | Employee #2 |
|----------------------|---------|------------|---------------------|----------------|
| Cement Trailer Float | CTF-182 | TRB-421 | Gutowski, Stanley | Balint, Daniel |
| Light Duty Vehicles | LDV-061 | | Woronovitch, Collin | |
| Cement Pump Float | CPF-136 | TRH-855 | Kirchenwitz, Jacob | |

Timing

| Event | Date/Time |
|-----------------|------------------|
| ERTS | 00/24/2023 00:00 |
| Call Out | 2/24/2023 09:40 |
| Depart Facility | 2/24/2023 13:30 |
| On Location | 2/24/2023 16:00 |
| Rig Up Iron | 2/24/2023 16:15 |
| Job Started | 2/24/2023 21:25 |
| Job Completed | 2/24/2023 23:02 |
| Rig Down Iron | 2/24/2023 23:20 |
| Depart Location | 2/25/2023 01:00 |

General Job Information

| Metrics | Value |
|-------------------------|-------------|
| Well Fluid Density | 9.15 lb/gal |
| Well Fluid Type | WBM |
| Rig Circulation Vol | 300 bbls |
| Rig Circulation Time | 0.5 hours |
| Calculated Displacement | 85 bbls |
| Actual Displacement | 85 bbls |
| Total Spacer to Surface | 20 bbls |
| Total CMT to Surface | 35 bbls |
| Well Topped Out | N/A |

Job Details

| Metrics | Value |
|--------------------------------|-------------|
| Flare Prior to Job | No |
| Flare Prior to Job | 0 units |
| Flare During Job | No |
| Flare During Job | 0 units |
| Flare at End of Job | No |
| Flare at End of Job | 0 units |
| Well Full Prior to Job | Yes |
| Well Fluid Density Into Well | 9.15 lb/gal |
| Well Fluid Density Out of Well | 9.15 lb/gal |

Job Details (cont.)

| Metrics | Value |
|---------|-------|
| BHCT | 81 °F |
| BHST | 99 °F |

Water Analysis

| Metrics | Value | Recommended |
|------------------|------------------|-------------|
| Water Source | Upright Rig Tank | |
| Temperature | 65 °F | 50-80 °F |
| pH Level | 7 | 5.5-8.5 |
| Chlorides | 400 mg/L | 0-3000 mg/L |
| Total Alkalinity | 140 | 0-1000 |
| Total Hardness | 120 mg/L | 0-500 mg/L |
| Carbonates | NA mg/L | 0-100 mg/L |
| Sulfates | 200 mg/L | 0-1500 mg/L |
| Potassium | 340 mg/L | 0-3000 mg/L |
| Iron | 0 mg/L | 0-300 mg/L |

Circulation

Lost Circulation Experienced

No

Job Execution Information

| Fluid | Product | Function | Density (lb/gal) | Yield (ft ³ /sk) | Water Rq. (gal/sk) | Water Rq. (gal/bbl) | Volume (sks) | Volume (bbl) | Designed Top (ft) |
|-------|---------|-------------------|---------------------|--------------------------------|-----------------------|------------------------|-----------------|-----------------|----------------------|
| 1 | Water | Flush | 8.34 | | | 42.00 | | 20.00 | 0 |
| 2 | Lead | Lead | 12.30 | 2.21 | 12.72 | | 165.00 | 65.04 | 0 |
| 3 | Tail | Tail | 12.80 | 1.97 | 10.87 | | 193.00 | 67.55 | 500 |
| 4 | Water | DisplacementFinal | 8.34 | | | 42.00 | | 85.00 | 0 |

Job Fluid Details

| Fluid | Type | Fluid | Product | Function | Conc. | Uom |
|-------|------|-------|------------------|-----------------|--------|-------|
| 2 | Lead | Lead | ASTM TYPE I/II | Cement | 100.00 | % |
| 2 | Lead | Lead | A-7P | Accelerator | 2.00 | lb/sk |
| 2 | Lead | Lead | ATHX-1102 | Thixotropic | 1.00 | lb/sk |
| 2 | Lead | Lead | FP-24 | Defoamer | 0.30 | %BWOB |
| 2 | Lead | Lead | IntegraSeal POLI | LostCirculation | 0.25 | lb/sk |
| 2 | Lead | Lead | STATIC FREE | Other | 0.01 | lb/sk |
| 3 | Tail | Tail | ASTM TYPE I/II | Cement | 100.00 | % |
| 3 | Tail | Tail | A-7P | Accelerator | 2.00 | lb/sk |
| 3 | Tail | Tail | ATHX-1102 | Thixotropic | 1.00 | lb/sk |
| 3 | Tail | Tail | FP-24 | Defoamer | 0.30 | %BWOB |
| 3 | Tail | Tail | IntegraSeal POLI | LostCirculation | 0.25 | lb/sk |
| 3 | Tail | Tail | STATIC FREE | Other | 0.01 | lb/sk |

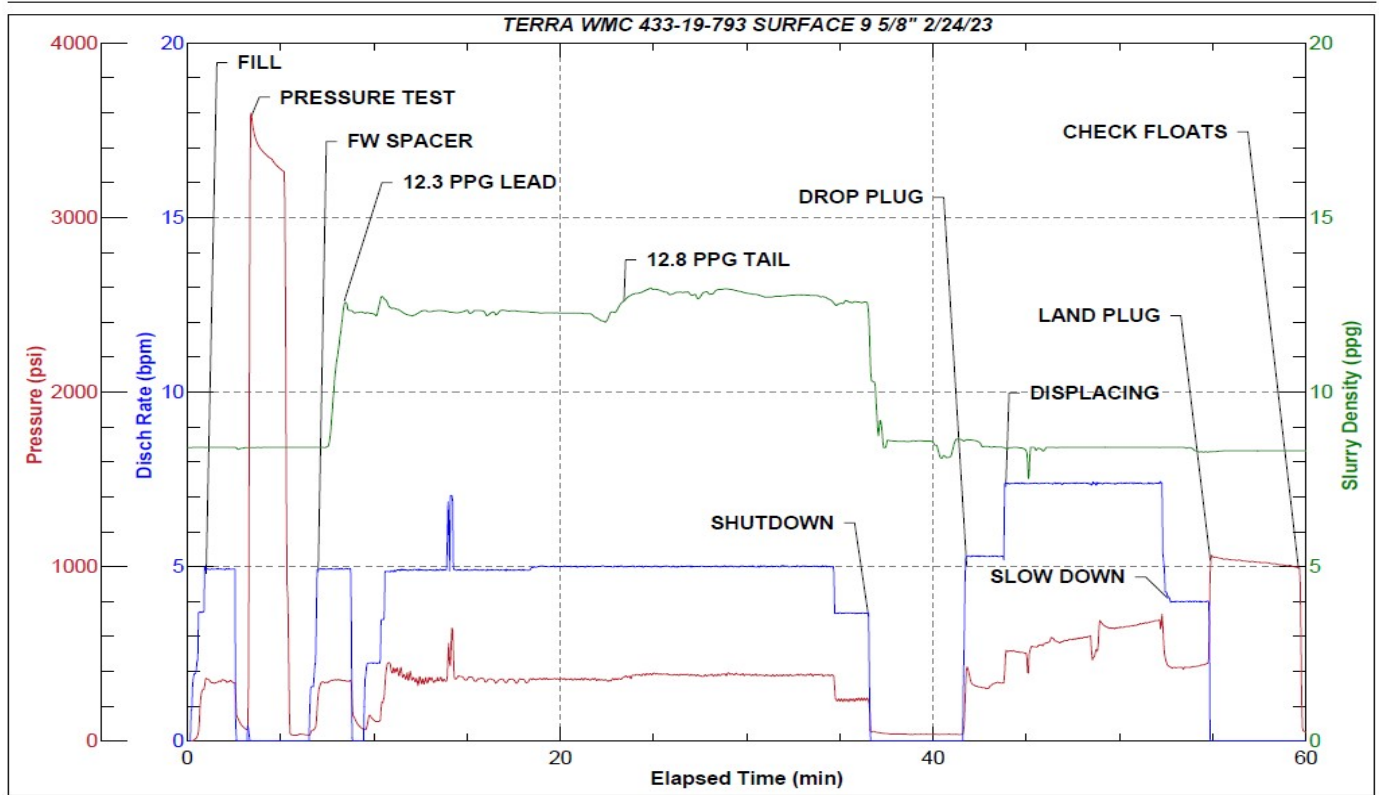
Job Logs

| Line | Event | Date (MM/DD/YY) | Time (HH:MM) | Density (lb/gal) | Pump Rate (bpm) | Pump Volume (bbls) | Pipe Pressure (psi) | Comment |
|------|---------------------|-----------------|--------------|------------------|-----------------|--------------------|---------------------|--------------------------------------------------------------------------------------------------------------------------------|
| 1 | Callout | 2/24/2023 | 09:40 | | | | | CREW CALLED OUT FOR LOCATION TIME OF 16:00 |
| 2 | Depart Location | 2/24/2023 | 13:30 | | | | | CREW DEPARTS STAGING FOR RIG LOCATION |
| 3 | Arrive On Location | 2/24/2023 | 16:00 | | | | | CREW AND EQUIPMENT ARRIVED ON LOCATION. RIG IS RIGGING UP CASING CREW |
| 4 | Rig Up Iron | 2/24/2023 | 16:15 | | | | | PRE RIG UP MEETING / RIG UP IRON HOSES AND EQUIPMENT. ON STANDBY WAITING FOR CASING TO FINISH BEING RAN. CASING LANDED @ 20:30 |
| 5 | Safety Meeting | 2/24/2023 | 21:25 | | | | | PRE JOB SAFETY MEETING WITH RIG CREW AND COMPANY MAN. FINISH RIGGING UP HEAD AND FLOOR AFTER SAFETY MEETING. |
| 6 | Fill Lines | 2/24/2023 | 22:02 | 8.34 | 5 | 10 | 371 | FILL LINES WITH 10 BBLS OF FRESH WATER |
| 7 | Pressure Test Lines | 2/24/2023 | 22:05 | 8.34 | | | 3657 | PRESSURE TEST PUMP AND LINES TO 3000 PSI |
| 8 | Other | 2/24/2023 | 22:09 | 8.34 | 5 | 10 | 303 | PUMP 10 BBLS FRESH WATER, SPACER FULL RETURNS |
| 9 | Pump Lead Cement | 2/24/2023 | 22:11 | 12.3 | 5 | 0 | 420 | BEGIN PUMPING 12.3 PPG LEAD CEMENT, WEIGHT VERIFIED BY MUD SCALE |
| 10 | Pump Lead Cement | 2/24/2023 | 22:18 | 12.3 | 5 | 30 | 330 | 30 BBLS LEAD CEMENT PUMPED |
| 11 | Pump Lead Cement | 2/24/2023 | 22:25 | 12.3 | 5 | 35 | 340 | 65 BBLS (165 SKS) LEAD CEMENT PUMPED FULL RETURNS |
| 12 | Pump Tail Cement | 2/24/2023 | 22:25 | 12.8 | 5 | 0 | 380 | BEGIN PUMPING 12.8 PPG TAIL CEMENT, WEIGHT VERIFIED BY MUD SCALE |
| 13 | Pump Tail Cement | 2/24/2023 | 22:31 | 12.8 | 5 | 30 | 378 | 30 BBLS TAIL CEMENT PUMPED |
| 14 | Pump Tail Cement | 2/24/2023 | 22:39 | 12.8 | 3.5 | 38 | 245 | 68 BBLS (193 SKS) TAIL CEMENT PUMPED FULL RETURNS. |
| 15 | Drop Top Plug | 2/24/2023 | 22:44 | 8.34 | 5.5 | 0 | 307 | DROP PLUG, WITNESSED BY COMPANY MAN. BEGIN PUMPING FRESH WATER DISPLACEMENT, FULL RETURNS |
| 16 | Pump Displacement | 2/24/2023 | 22:47 | 8.34 | 7.5 | 20 | 540 | 20 BBLS DISPLACEMENT PUMPED, SPACER BACK @ 30 BBLS FULL RETURNS |
| 17 | Pump Displacement | 2/24/2023 | 22:51 | 8.34 | 7.4 | 30 | 640 | 50 BBLS DISPLACEMENT PUMPED. CEMENT TO SURFACE @ 50 BBLS PUMPED, 35 BBLS TOTAL CEMENT TO SURFACE. FCP-640 @ 7.4 BPM |
| 18 | Pump Displacement | 2/24/2023 | 22:57 | 8.34 | 4 | 35 | 390 | 85 BBLS (CALCULATED) TOTAL DISPLACEMENT PUMPED |
| 19 | Land Plug | 2/24/2023 | 22:57 | 8.34 | | | 1050 | PLUG LANDED. FCP-390 PSI BUMP TO-1050 PSI |
| 20 | Check Floats | 2/24/2023 | 23:02 | | | | | BLEED OFF PRESSURE-CHECK FLOATS, FLOATS HELD .5 BBLS BACK |
| 21 | Rig Down Iron | 2/24/2023 | 23:20 | | | | | PRE RIG DOWN SAFETY MEETING, PICKLE, BLOW DOWN IRON, RIG DOWN EQUIPMENT, IRON AND HOSES |
| 22 | Depart Location | 2/25/2023 | 01:00 | | | | | CREW DEPARTS LOCATION FOR RCO YARD |

Pump Diagrams



JobMaster Program Version 5.01C1
Job Number: 85949
Customer: TERRA
Well Name: WMC 433-19-793



Job Start: Friday, February 24, 2023