

Well Latitude / Longitude:

40.296216/-104.469216

Flowline Point A (Lat / Long):

40.293601/-104.466566

Flowline Point B (Lat / Long):

40.296204/-104.469192

Flowline Length (ft):

1327

Flowline Abandonment Type:

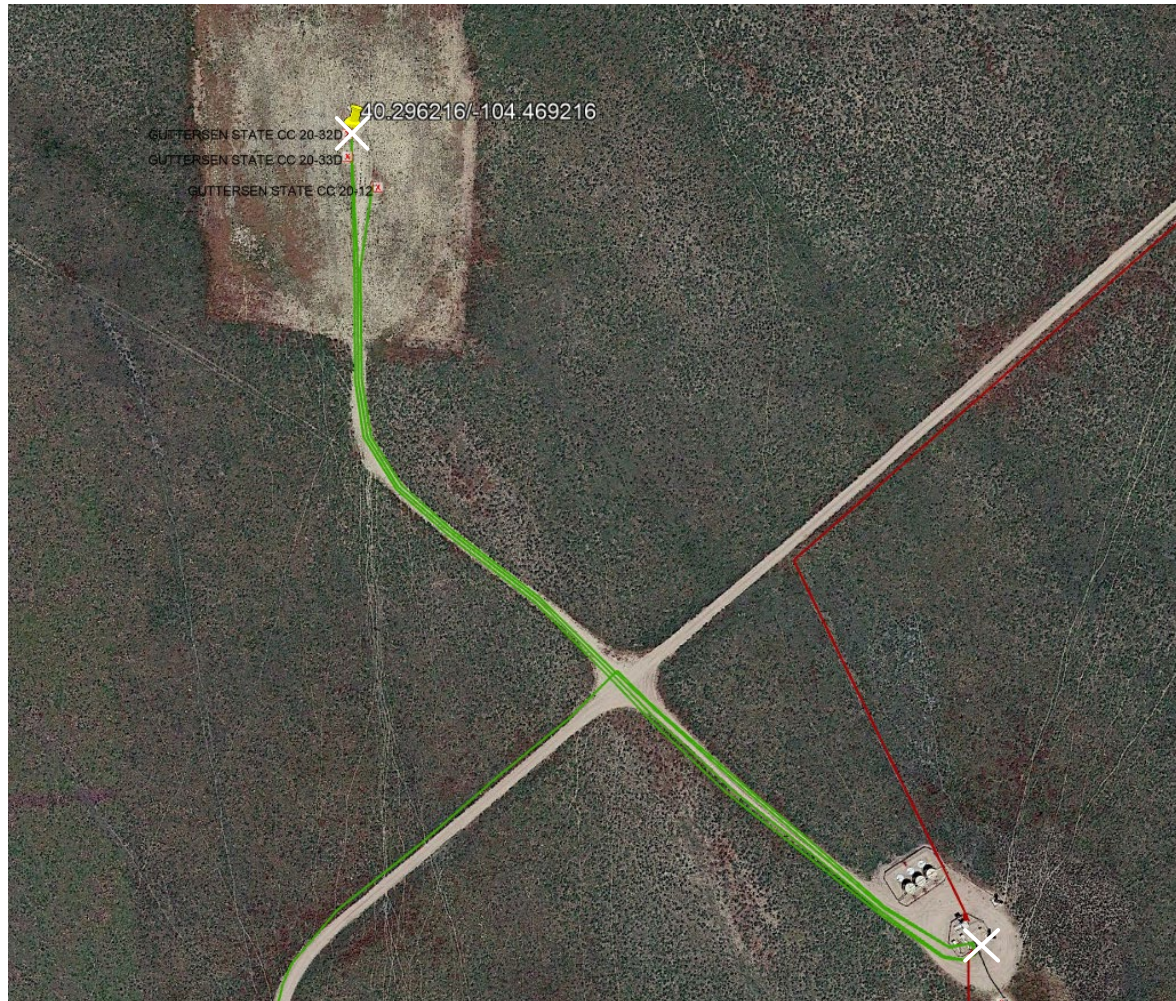
Abandon in place due to common trench with one active well. Remove when last well on pad is P/A'd.

Comments:

X = Proposed Soil Sample Location

□ = Area of Conflict, Proposed Flowline Abandon-in-Place Area

● = Field Screening Location



Map Created Date:

6-27-2023

Well Name:

GUTTERSEN STATE CC20-32D

Map Created By:

Jeff White

Well API:

05-123-31173

the
human Chevron **energy**
company™