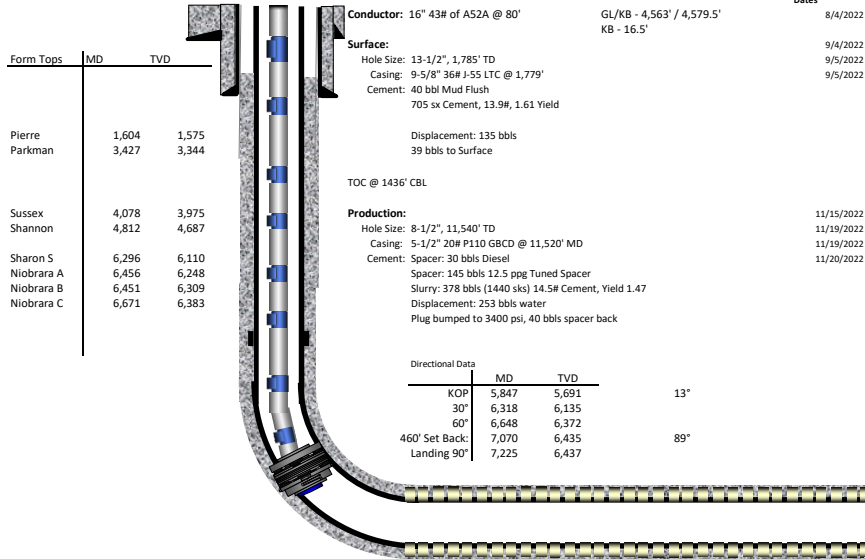


Confluence DJ LLC
 Bigfoot 11-10-3
 Producing Formation: Niobrara C
 05-123-51763
 NWSW 11-4N-63W
 Weld County, CO

SB Crossing		MD	TVD
TOE	1299' FSL 460' FEL	11,492	6,431
HEEL	1271' FSL 460' FWL	7,070	6,435



Dates

8/4/2022
9/4/2022
9/5/2022
9/5/2022
11/15/2022
11/19/2022
11/19/2022
11/20/2022

Frac Summary: Finished 05/17/2023

Stages	Vol. Fluid (bbls)	Total Prop (lbs)	Ave Rate	Average PSI	Max PSI	Shallowest Perf	Deepest Perf	Completed Length
22	138,865	5,169,250	77	5,737	7,758	7,080	11,470	4,390

	Float Sub	Toe Sleeve	460' SB	Float Collar (PBDT)	Float Shoe	TD
MD (ft):	5,747	11,490	11,492	11,505	11,518	11,540
TVD (ft):	5,594	6,431	6,431	6,430	6,430	6,430

Tubing Details - Installed 06/3/2023

Joints	Spacing	Depth	DIAMETERS		VALVE PRESSURES			Port	Misc Data
			O.D.	I.D.	PTRO	PSC	PSO		
		16.00							KB
	0.50	16.50							Tubing Hanger
1	31.34	47.84							Slick Joint
	10.10	57.94							Sub
	8.10	66.04							Sub
	6.10	72.14							Sub
	2.10	74.24							Sub
39	1232.10	1306.34							
	4.10	1310.44	4.283	1.995	780	835	853	12/64	GLV #8
34	1065.82	2376.26							
	4.10	2380.36	4.283	1.995	745	806	821	12/64	GLV #7
27	845.98	3226.34							
	4.10	3230.44	4.283	1.995	720	784	797	12/64	GLV #6
21	657.68	3888.12							
	4.10	3892.22	4.283	1.995	695	759	770	12/64	GLV #5
19	596.42	4488.64							
	4.10	4492.74	4.283	1.995	670	731	741	12/64	GLV #4
19	596.29	5089.03							
	4.10	5093.13	4.283	1.995	650	707	718	12/64	GLV #3
19	595.99	5689.12							
	4.10	5693.22	4.283	1.995	630	682	693	12/64	GLV #2
17	530.79	6294.01							
	0.93	6294.94	3.063	1.875					X Nipple
1	31.70	6256.64							
	4.10	6260.74	4.283	1.995	S/O			16/64	GLV #1
1	31.46	6292.20							
	1.45	6293.65							ON/OFF Tool
	0.10	6293.75							Stinger w/1.875 Profile
	7.50	6301.25	4.500	2.000					5 1/2 x 2 3/8 ASI-X
	1.01	6302.26	3.063	1.875					XN Nipple
	0.39	6302.65	3.040	1.995					Pump Out Plug