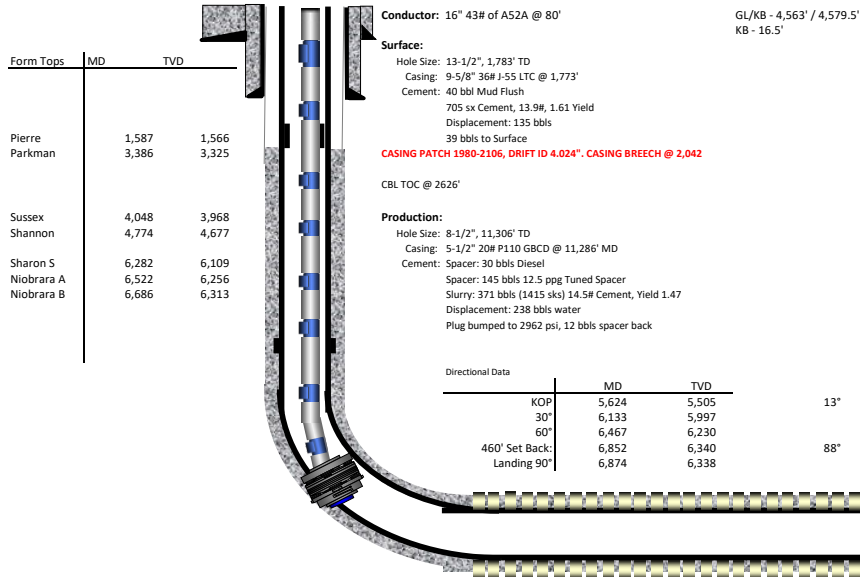


Confluence DJ LLC
 Bigfoot 11-9-2
 Producing Formation: Niobrara B
 05-123-51761
 NWSW 11-4N-63W
 Weld County, CO

SB Crossing MD TVD
 TOE 1628' FSL, 460' FEL 11,282 6,339
 HEEL 1615' FSL, 460' FWL 6,852 6,340



Dates
 9/5/2022
 9/5/2022
 9/5/2022

3/22/2023

Frac Summary: Finished 05/17/2023

Stages	Vol. Fluid (bbls)	Total Prop (lbs)	Ave Rate	Average PSI	Max PSI	Shallowest Perf	Deepest Perf	Completed Length
22	154,519	6,001,570	76.5	5,912	7,794	6,862	11,180	4,318

	Float Sub	Toe Sleeve	460' SB	Float Collar (PBSD)	Float Shoe	TD
MD (ft):	5,390	11,255	11,282	11,270	11,283	11,306
TVD (ft):	5,279	6,339	6,339	6,339	6,339	6,339

Tubing Details - Installed 6/1/2023

Joints	Spacing	Depth	DIAMETERS		TRO Pressure	Surface Close Pressure	Surface Open Pressure	Port	Misc Data
			O.D.	I.D.					
		16.00							KB
	0.50	16.50							Tubing Hanger
	4.10	20.60							2-3/8" x 4' L80 Pup Joint
	1.31	21.91							TIW Valve
	0.79	22.70							Ceramic Disc
1	31.40	54.10							
	4.10	58.20	3.783	1.995	645	656	680	12/64	GLV #2
15	469.82	528.02							
	0.79	528.81							Ceramic Disc
1	31.48	560.29							
	4.10	564.39	3.783	1.995	625	632	654	12/64	GLV #1
10	313.98	878.37							
	0.93	879.30	3.063	1.875					X Nipple
9	283.22	1162.52							
	0.93	1163.45	3.063	1.791					XN Nipple
1	31.35	1194.80							1 Jt - 2-3/8" Tubing
	0.79	1195.59							Ceramic Disc
	0.50	1196.09	3.063	2.000					WLEG
		1196.09							EOT