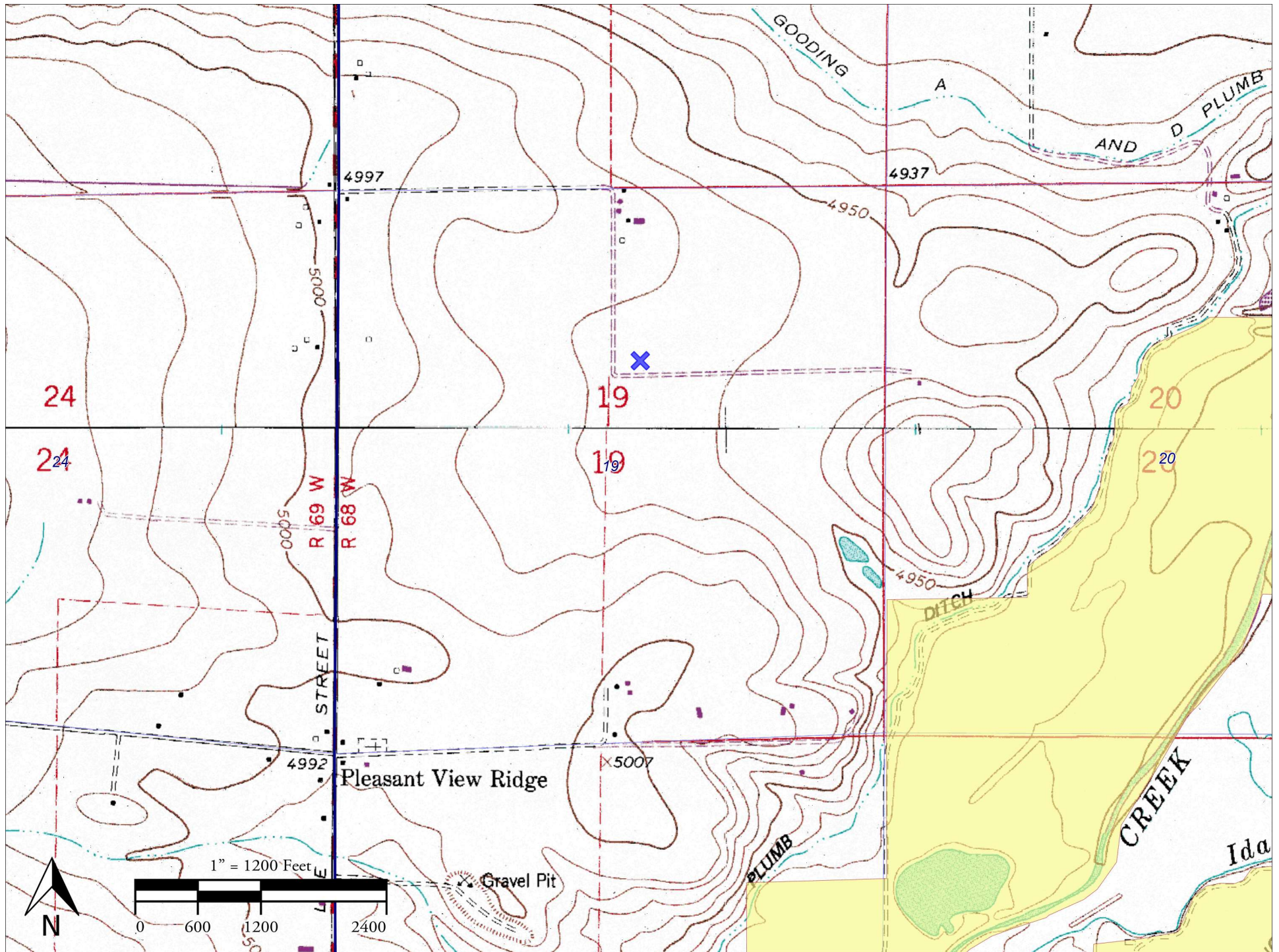


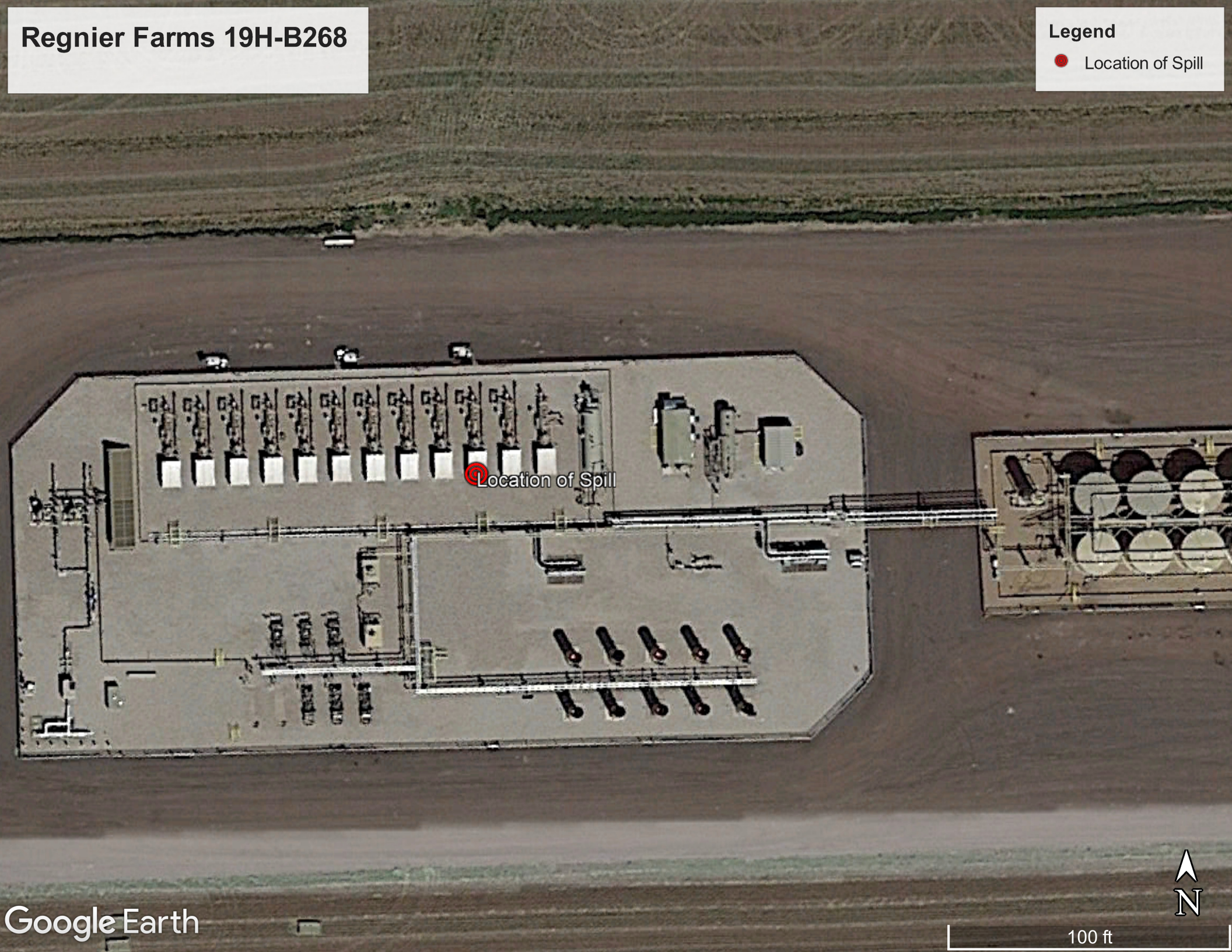
Topo Map



Regnier Farms 19H-B268

Legend

● Location of Spill



Location of Spill

S

SW

W

N

180

210

240

270

300

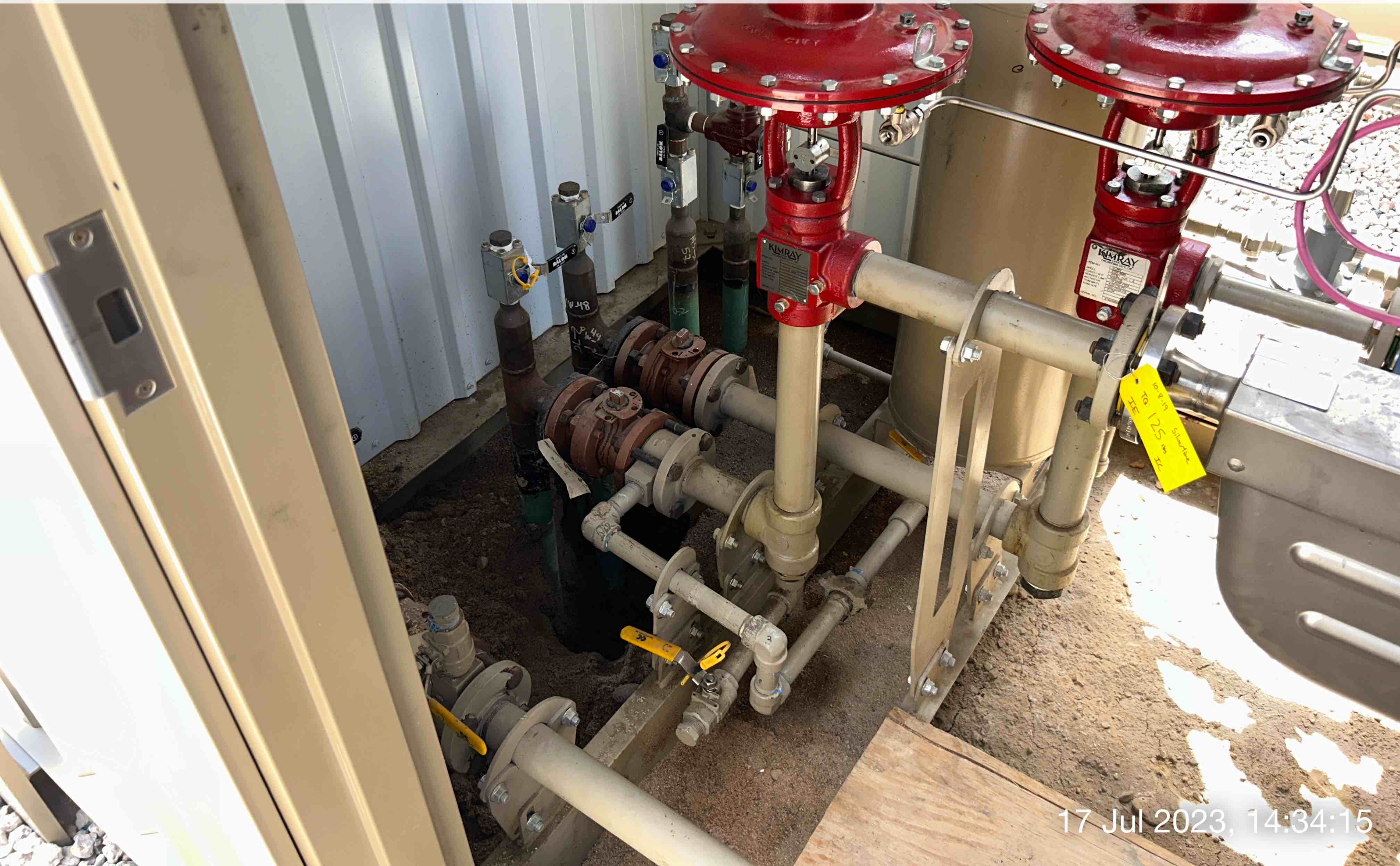
☼ 244°SW (T) ● 40.126692°, -105.045060° ±13ft



17 Jul 2023, 14:34:07



☀ 232°SW (T) ● 40.126680°, -105.045079° ±13ft



17 Jul 2023, 14:34:15

NE

E

SE

30

60

90

120

150

☼ 84°E (T) ● 40.126671°, -105.045100° ±13ft



17 Jul 2023, 14:34:44



☀ 7°N (T) ● 40.126633°, -105.045118° ±13ft





CRESTONE PEAK
RESOURCES

IN EMERGENCY CONTACT
911
303-659-7740 (CRESTONE)

REGNIER FARMS

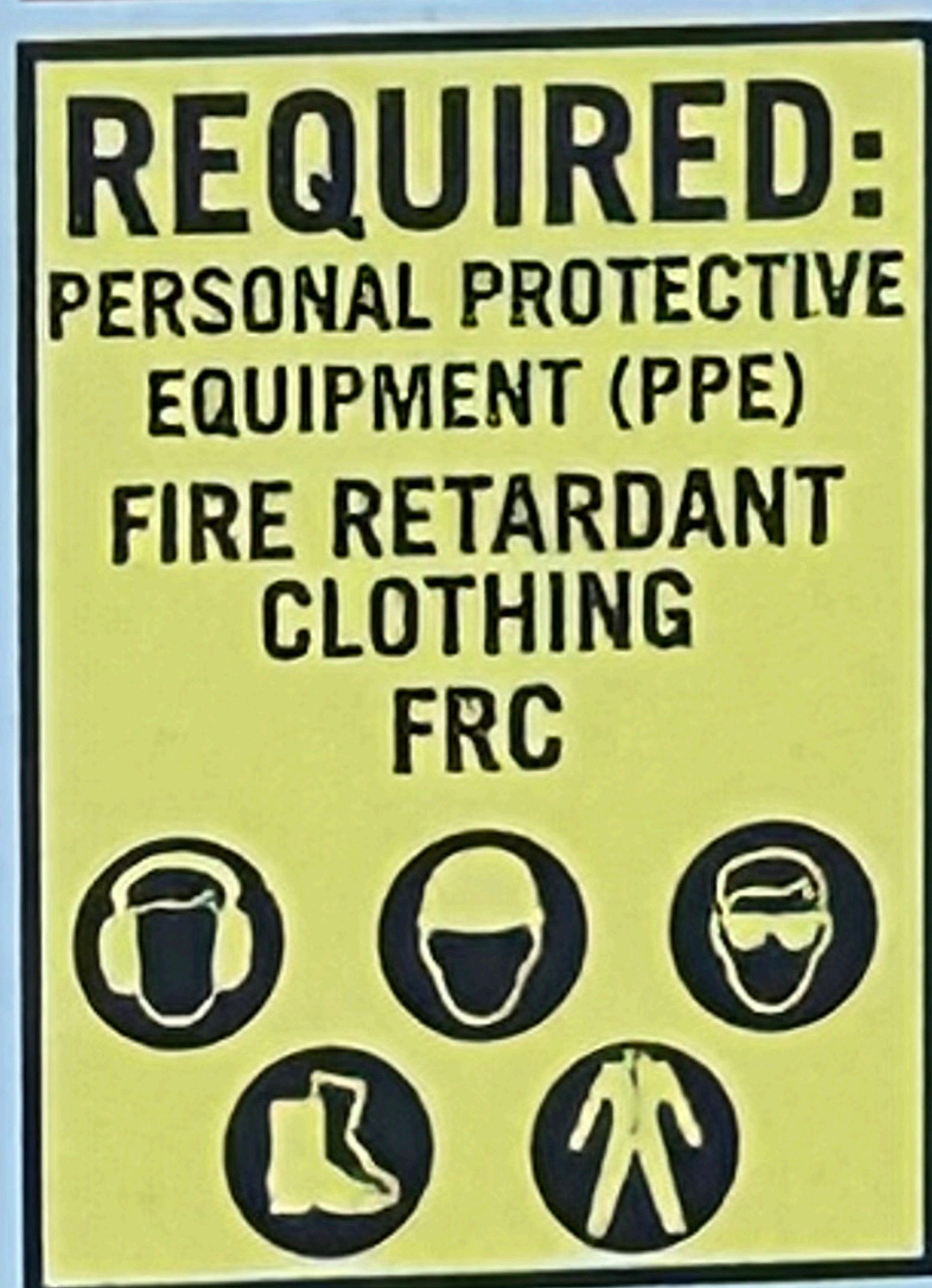
1J-19H-B268

NW/NE 19 2 68 6

LAT./LONG:

40.131203/-105.043129

WELD COUNTY, CO



PLEASE OBEY POSTED SPEED LIMITS

e or
could

ing
sterring



CRESTONE PEAK
RESOURCES

COC30024 COC79544

REGNIER FARMS
19H-B268 BATTERY

SW/NE 19 2 68 6

LAT./LONG:

40.126529/-105.045280

WELD COUNTY, CO

WCR 7 & 20 1/2, WEST 2.3 MILES,
SOUTH INTO

IN EMERGENCY CONTACT

911

303-659-7740 (CRESTON)

DANGER

NO TRESPASSING
AUTHORIZED
PERSONNEL ONLY

REQUIRED:

PERSONAL PROTECTIVE
EQUIPMENT (PPE)

FIRE RETARDANT
CLOTHING
FRC



PLEASE OBEY POSTED SPEED LIMITS