

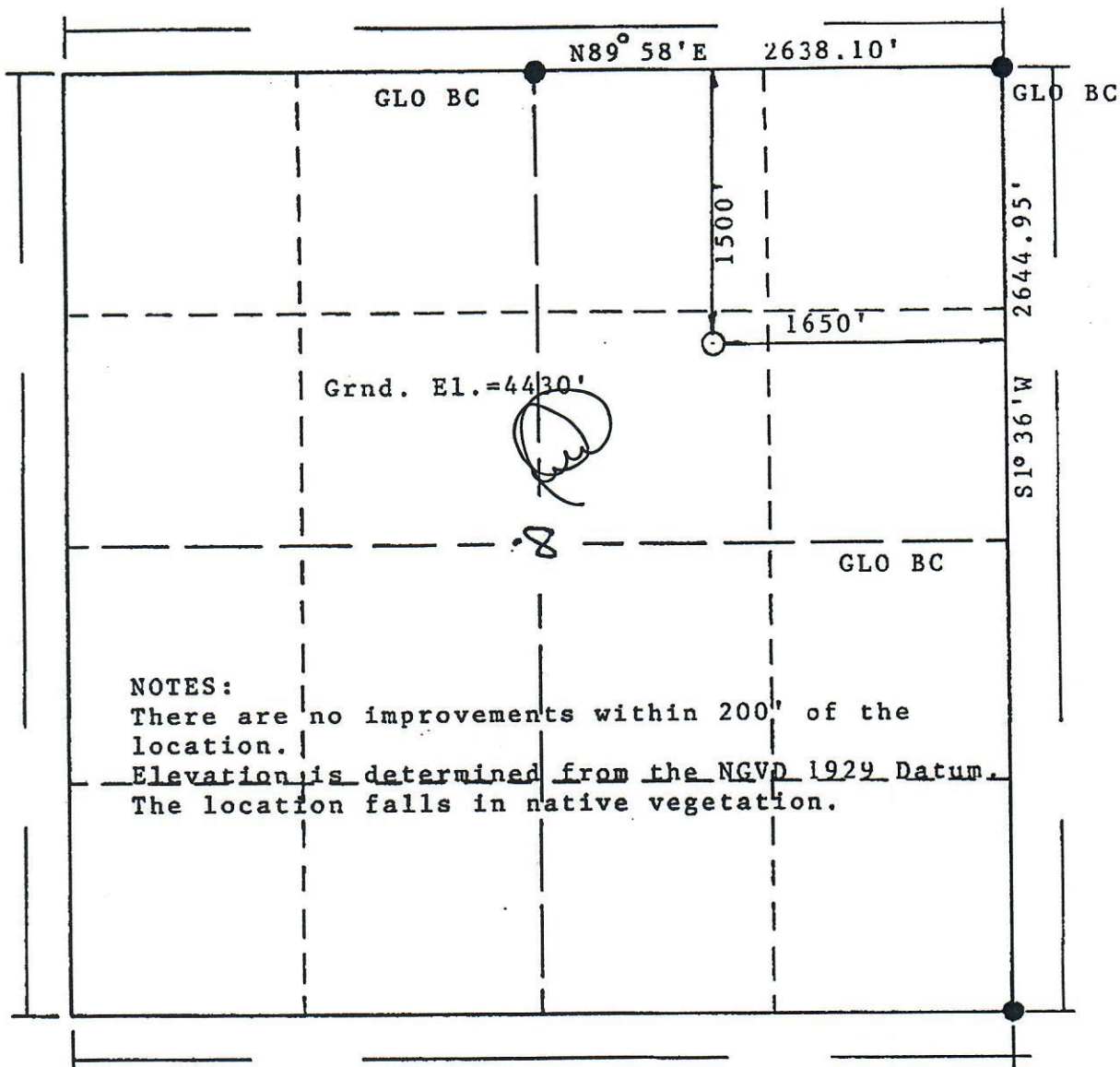


00524081



Form PS-102

R. 50 W.

BASIS OF BEARINGS: The north line of the NE of
Section 8 as N89°58'E per GLO.

NOTES:

There are no improvements within 200' of the location.

Elevation is determined from the NGVD 1929 Datum.
The location falls in native vegetation.

Scale: 1"=1000'

Powers Elevation, Inc. of Denver, Colorado has in accordance with a request from Pat Ungleich for Mull Drilling Co., Inc. determined the location of Rogers #1 to be 1500' FNL & 1650' FEL Section 8, Township 16 South Range 50 West of the Sixth Principal Meridian, Cheyenne County, Colorado

I hereby certify that this plot is an accurate representation of a correct survey showing the location of Rogers #1

Date: January 21, 1994

Licensed Land Surveyor No. 1958

