



00524072

FORMATION TEST REPORT



Home Office:

Wichita, Kansas 67201

P.O. Box 1599

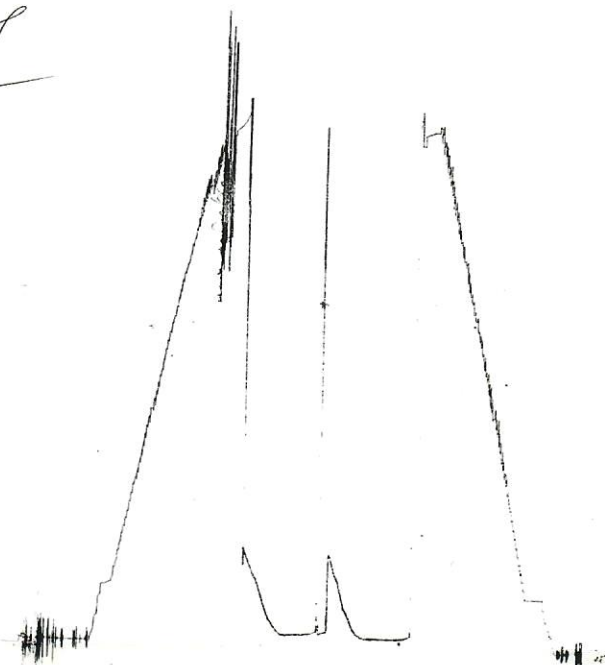
Phone (316) 262-5861

13597

KT 20344

I

9



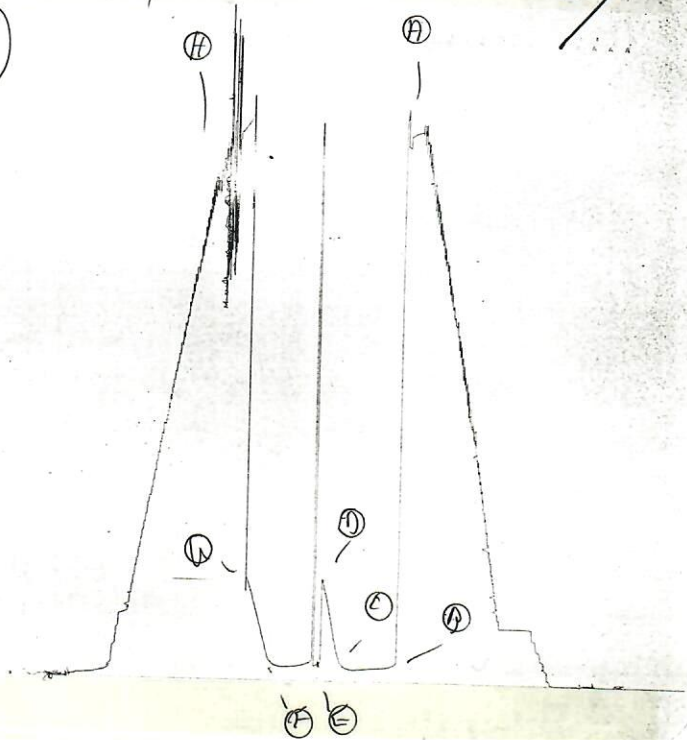
Inside Recorder

13466

KT 20344

①

9



Outside Recorder

FORMATION TEST REPORT

RECEIVED
APR 29 1994



Home Office:

Wichita, Kansas 67201

P.O. Box 1599

Phone 1-800-688-7021

DST REPORT

GENERAL INFORMATION

DATE	: 4-22-94	TICKET	: 20344
CUSTOMER	: MULL DRILLING CO. INC.	LEASE	: ROGERS
WELL	: #1	TEST:	: 1
ELEVATION	: 4441 K.B.	GEOLOGIST	: ROGER MARTIN
SECTION	: 8	FORMATION	: ST. LOUIS
RANGE	: 50W	TOWNSHIP	: 16S
GAUGE SN#	: 13400	STATE	: CO
		CLOCK	: 12
	COUNTY: CHEYENNE		
	RANGE : 3950		

WELL INFORMATION

PERFORATION INTERVAL FROM:	5605.00 ft	TO:	5640.00 ft	TVD:	5640.0 ft
DEPTH OF SELECTIVE ZONE:				TEST TYPE:	OIL
DEPTH OF RECORDERS:	5628.0 ft		5631.0 ft		
TEMPERATURE:	152.0				
DRILL COLLAR LENGTH:	546.0 ft	I.D.:	2.200 in		
WEIGHT PIPE LENGTH :	0.0 ft	I.D.:	0.000 in		
DRILL PIPE LENGTH :	5030.0 ft	I.D.:	3.800 in		
TEST TOOL LENGTH :	29.0 ft	TOOL SIZE :	5.500 in		
ANCHOR LENGTH :	35.0 ft	ANCHOR SIZE:	5.500 in		
SURFACE CHOKE SIZE :	0.750 in	BOTTOM CHOKE SIZE:	0.750 in		
MAIN HOLE SIZE :	7.875 in	TOOL JOINT SIZE :	4.5XH		
PACKER DEPTH:	5600.0 ft	SIZE:	6.630 in		
PACKER DEPTH:	5605.0 ft	SIZE:	6.630 in		
PACKER DEPTH:	0.0 ft	SIZE:	0.000 in		
PACKER DEPTH:	0.0 ft	SIZE:	0.000 in		

MUD INFORMATION

DRILLING CON. :	KUDU	VISCOSITY :	76.00 cp
MUD TYPE :	CHEMICAL	WATER LOSS:	7.800 cc
WEIGHT :	9.200 ppg		
CHLORIDES :	400 ppm	SERIAL NUMBER:	414
JARS-MAKE :	WTC	REVERSED OUT?:	NO
DID WELL FLOW?:	NO		

COMMENTS

Comment

WEAK BLOW DIED IN 1 MINUTE ON INITIAL FLOW PERIOD.
NO BLOW FLUSHED TOOL SURGED AND DIED ON FINAL FLOW PERIOD.

DST REPORT (CONTINUED)

COMMENTS (CONTINUED)

Comment

API #05-017-07417

FLUID RECOVERY

Feet of Fluid	% Oil	% Gas	% Water	% Mud	Comments
10.0	0.0	0.0	0.0	100.0	MUD

RATE INFORMATION

OIL VOLUME:	0.0000	STB	TOTAL FLOW TIME:	60.0000	min.
GAS VOLUME:	0.0000	SCF	AVERAGE OIL RATE:	0.0000	STB/D
MUD VOLUME:	0.0470	STB	AVERAGE WATER RATE:	0.0000	STB/D
WATER VOLUME:	0.0000	STB			
TOTAL FLUID :	0.0470	STB			

FIELD TIME & PRESSURE INFORMATION

INITIAL HYDROSTATIC PRESSURE: 2830.00

Description	Duration	p1	p End
INITIAL FLOW	30.00	48.00	48.00
INITIAL SHUT-IN	30.00		513.00
FINAL FLOW	30.00	58.00	58.00
FINAL SHUT-IN	30.00		503.00

FINAL HYDROSTATIC PRESSURE: 2790.00

DST REPORT (CONTINUED)

OFFICE TIME & PRESSURE INFORMATION

INITIAL HYDROSTATIC PRESSURE: 2814.00

Description	Duration	p1	p End
INITIAL FLOW	30.00	77.00	59.00
INITIAL SHUT-IN	30.00		512.00
FINAL FLOW	30.00	93.00	67.00
FINAL SHUT-IN	27.00		510.00

FINAL HYDROSTATIC PRESSURE: 2797.00

PRESSURE TRANSIENT REPORT

GENERAL INFORMATION

DATE	: 4-22-94	TICKET	: 20344
CUSTOMER	: MULL DRILLING CO. INC.	LEASE	: ROGERS
WELL	: #1	TEST: 1	GEOLOGIST: ROGER MARTIN
ELEVATION	: 4441 K.B.	FORMATION	: ST. LOUIS
SECTION	: 8	TOWNSHIP	: 16S
RANGE	: 50W	STATE	: CO
GAUGE SN#	: 13400	CLOCK	: 12
	COUNTY: CHEYENNE		
	RANGE : 3950		

INITIAL FLOW

Time (min)	Pressure	Delta P
0.00	77.00	77.00
5.00	77.00	0.00
10.00	71.00	-6.00
15.00	66.00	-5.00
20.00	64.00	-2.00
25.00	62.00	-2.00
30.00	59.00	-3.00

INITIAL SHUT IN

Time (min)	Pressure	Delta P	Horner T
3.00	59.00	59.00	0.00
6.00	60.00	1.00	0.00
9.00	65.00	5.00	0.00
12.00	79.00	14.00	0.00
15.00	118.00	39.00	0.00
18.00	195.00	77.00	0.00
21.00	301.00	106.00	0.00
24.00	393.00	92.00	0.00
27.00	474.00	81.00	0.00
30.00	512.00	38.00	0.00

FINAL FLOW

Time (min)	Pressure	Delta P
0.00	93.00	93.00

PRESSURE TRANSIENT REPORT (CONTINUED)

FINAL FLOW (CONTINUED)

<u>Time (min)</u>	<u>Pressure</u>	<u>Delta P</u>
5.00	75.00	-18.00
10.00	89.00	14.00
15.00	78.00	-11.00
20.00	72.00	-6.00
25.00	69.00	-3.00
30.00	67.00	-2.00

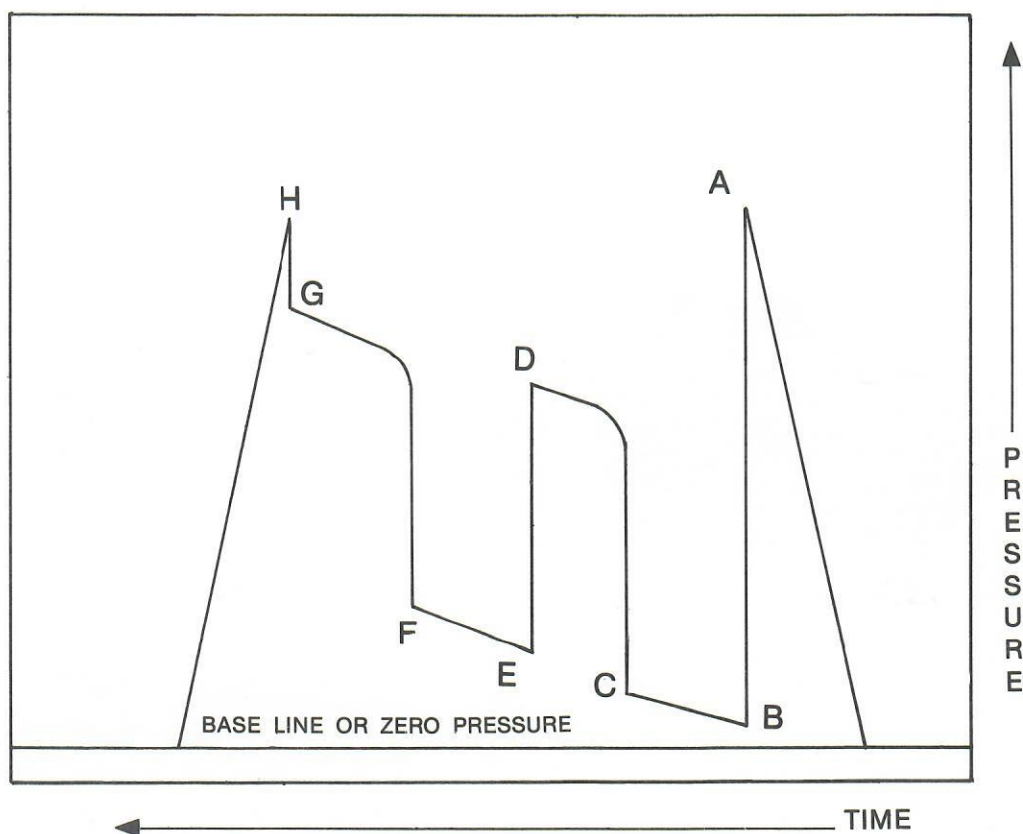
FINAL SHUT IN

<u>Time (min)</u>	<u>Pressure</u>	<u>Delta P</u>	<u>Horner T</u>
3.00	71.00	71.00	0.00
6.00	78.00	7.00	0.00
9.00	100.00	22.00	0.00
12.00	165.00	65.00	0.00
15.00	230.00	65.00	0.00
18.00	306.00	76.00	0.00
21.00	378.00	72.00	0.00
24.00	446.00	68.00	0.00
27.00	510.00	64.00	0.00

COMPANY TERMS

Western Testing Co., Inc. shall not be liable for damages of any kind to the property or personnel of the one for whom a test is made or for any loss suffered or sustained directly or indirectly through the use of its equipment, of its statements or opinion concerning the results of any test. Tools lost or damaged in the hole shall be paid at cost by the party for whom the test is made.

AK-1 Recorders



- | | |
|-------------------------|-------------------------|
| A - Initial Hydrostatic | E - Second Initial Flow |
| B - First Initial Flow | F - Second Final Flow |
| C - First Final Flow | G - Final Shut-In |
| D - Initial Shut-In | H - Final Hydrostatic |