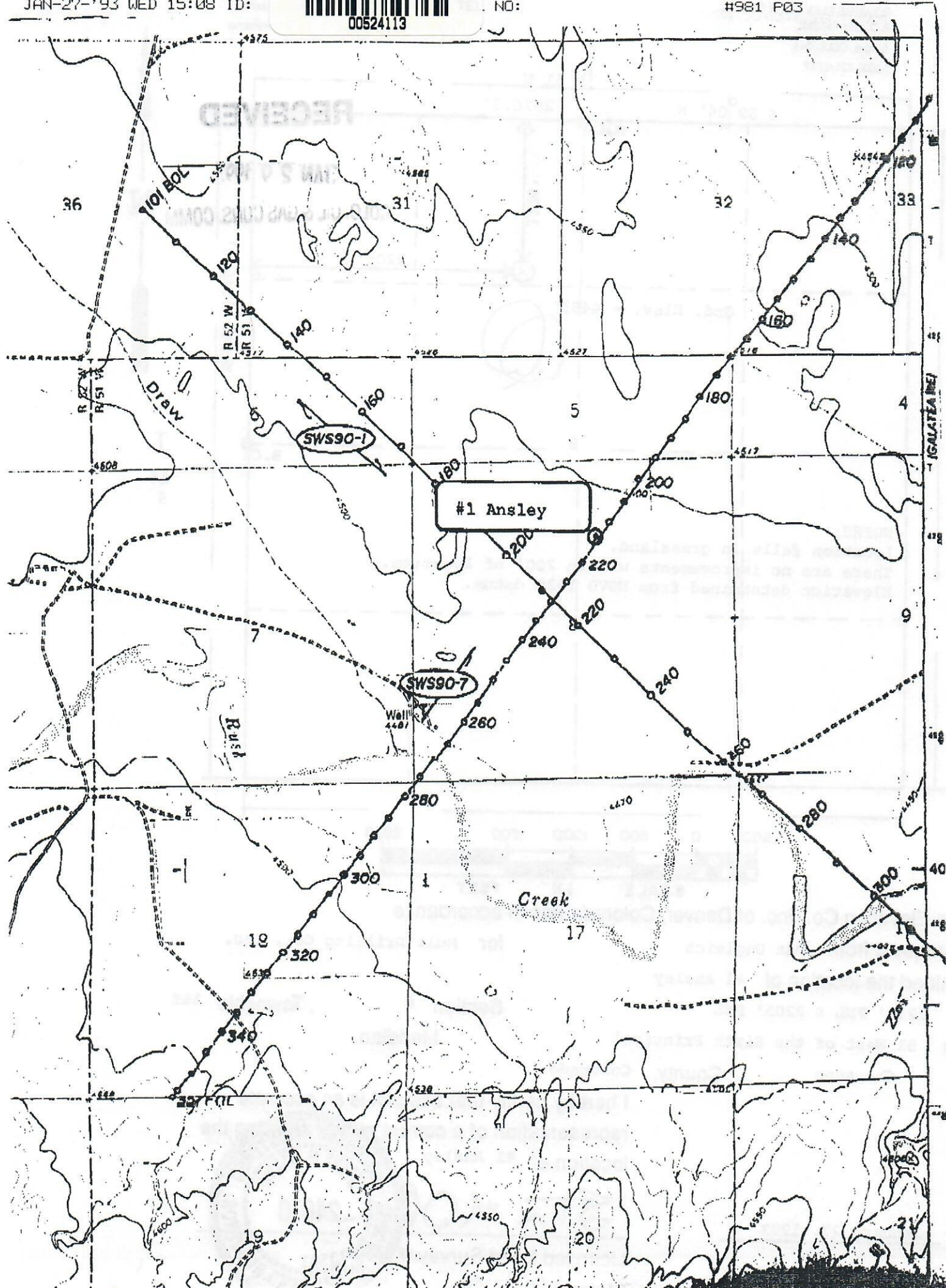




00524113

NO:

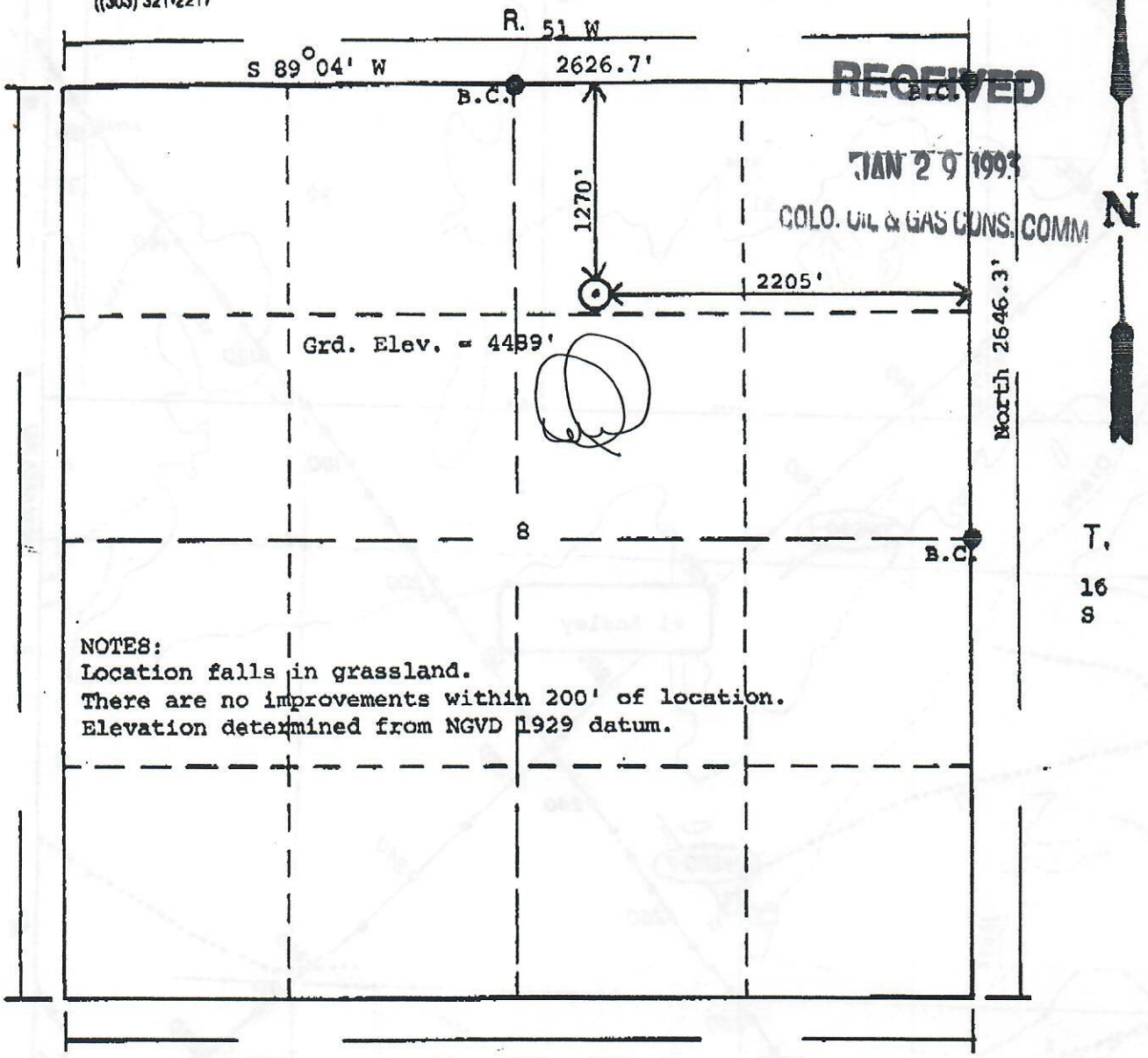
#981 P03



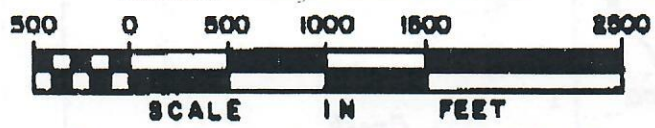
02B

POWERS ELEVATION CO., INC.
P.O. Box 440889
Aurora, CO 80044
(303) 321-2217

All POWERS ELEVATION CO., INC.
elevations originate from
accepted U.S. Benchmarks



NOTES:
Location falls in grassland.
There are no improvements within 200' of location.
Elevation determined from NGVD 1929 datum.



Powers Elevation Co., Inc. of Denver, Colorado has in accordance
with a request from Pat Ungleich for Mull Drilling Co., Inc.
determined the location of #1 Ansley
to be 1270' FNL & 2205' FEL
Range 51 West of the Sixth Principal Meridian,
Cheyenne County, Colorado

I hereby certify that this plot is an accurate
representation of a correct surveying the
location of #1 Ansley

Date: January 27, 1993

Steve M. Olson
24670
Licensed Land Surveyor
State of Colorado

