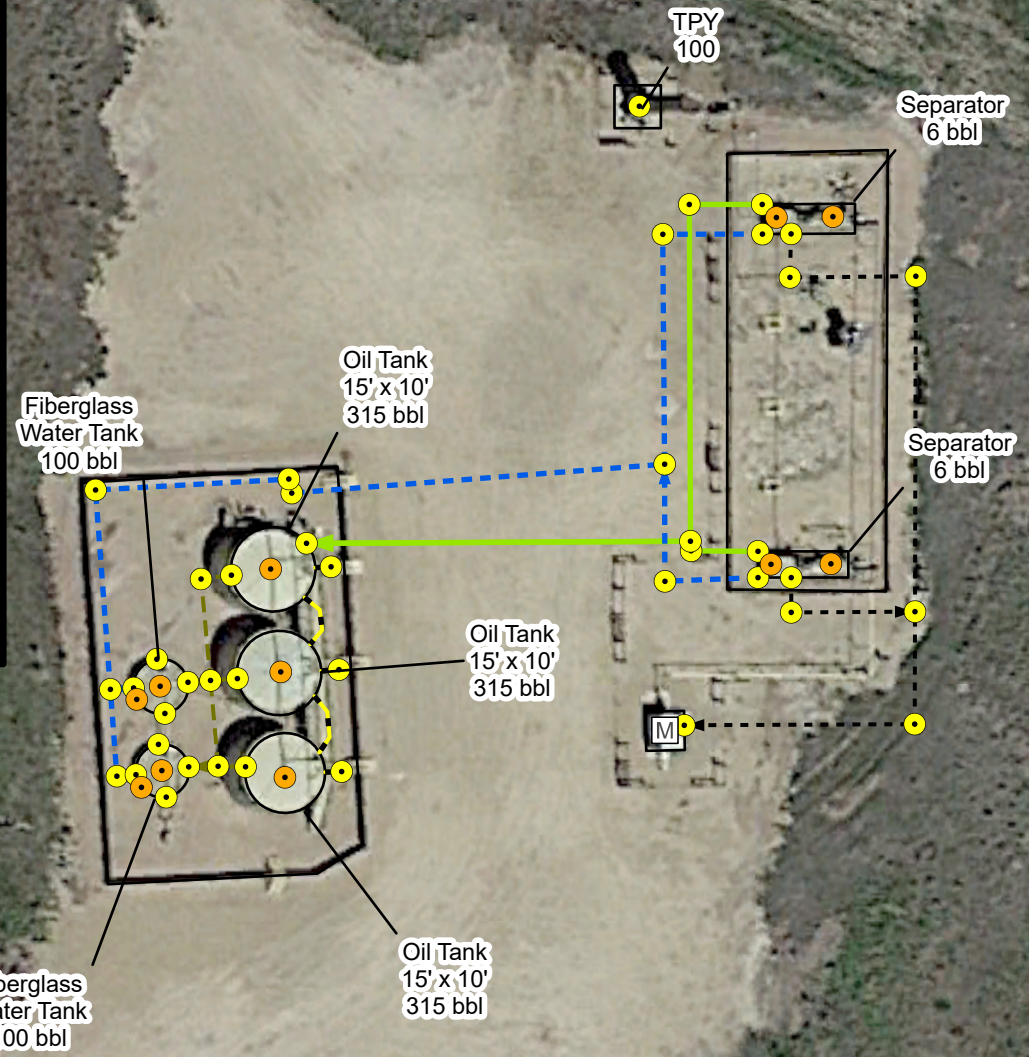


Legend

- Proposed Soil Sample Location
- Proposed Soil Screening Location
- Drain Line
- Gas Line
- Oil Dump
- Water Dump
- Flowline
- Drip Containment
- Metal Berm
- Fence
- Infrastructure
- Meter House

Notes
 BBL: Barrel
 AST: Above Ground Storage Tank
 PWV: Produced Water Vessel
 ECD: Emission Control Device



Sources: Environmental Systems Research Institute (ESRI)

Default Folder: C:\Users\Justin Veldez\OneDrive - ENSOLUM, LLC\Ensolium GIS\0 - Projects\Kerr-McGee Oil & Gas Onshore, LP\09A1417393 - Koester 24-33 Wellhead\1 - Map File\F271 Projects



**Proposed Facility Closure and
 Soil Sampling Locations Map**
 Sharkey 8 & 9-35 & 10-3 O SA Facility
 Kerr-McGee Oil & Gas Onshore, LP
 SESE SEC 35-T4N-R67W
 Weld County, CO

Project Number: 09A1417396

**FIGURE
 2**