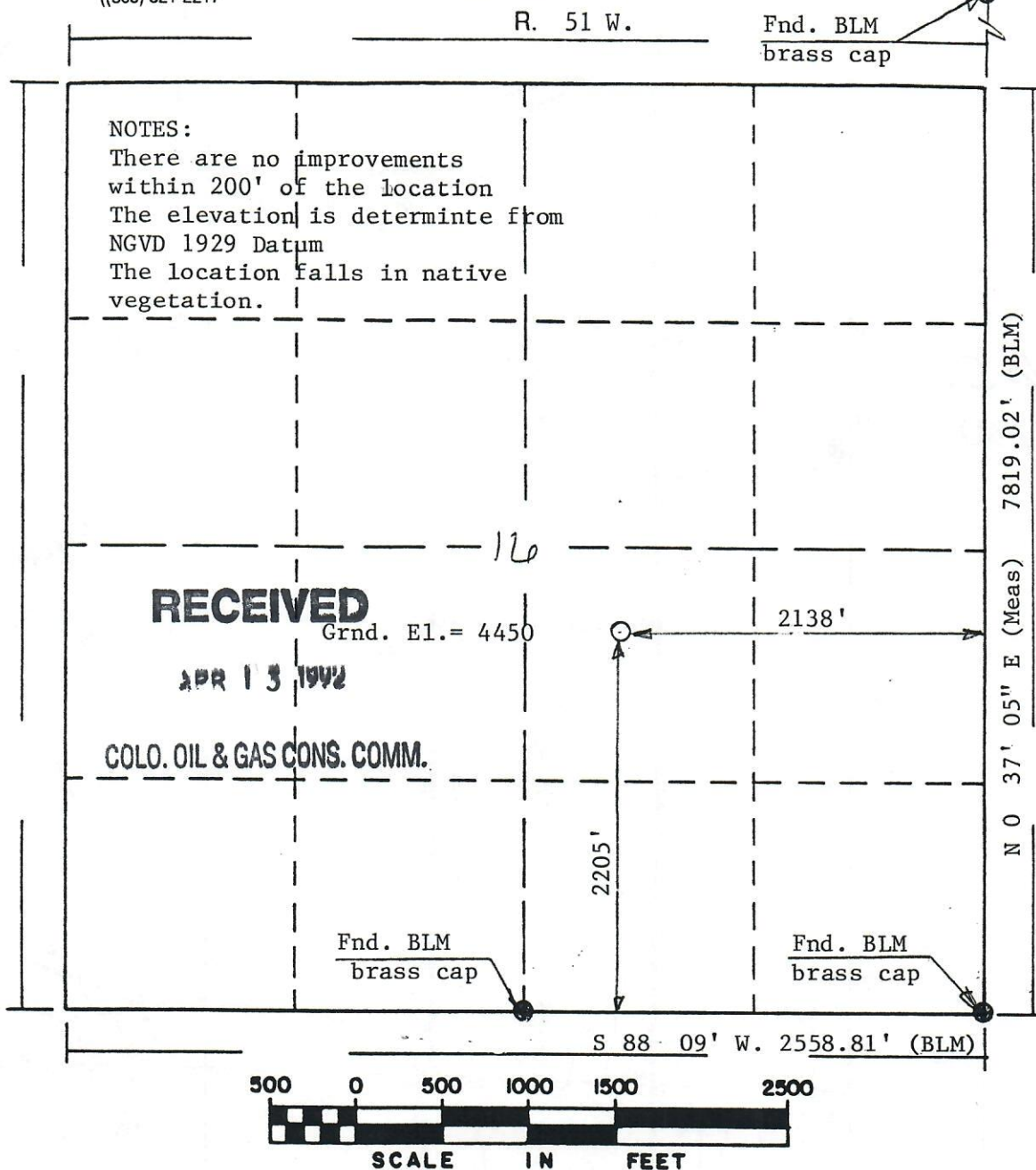




00524136

All POWERS ELEVATION CO., INC.
elevations originate from
accepted U.S. BenchmarksBasis of Bearing: The south line of Section 16 per
BLM plat "1914"

N

T. 16 S.

Powers Elevation Co., Inc. of Denver, Colorado has in accordance

with a request from Pat Ungleich

for Mull Drilling

determined the location of State-Winship #1

to be 2138' FEL & 2205' FSL

Range 51 West, of the Sixth Principal

Section 16, Township 16 South
Meridian,

Cheyenne County, Colorado

I hereby certify that this plot is an accurate
representation of a correct survey showing the
location of State-Winship

Date: April 11, 1992

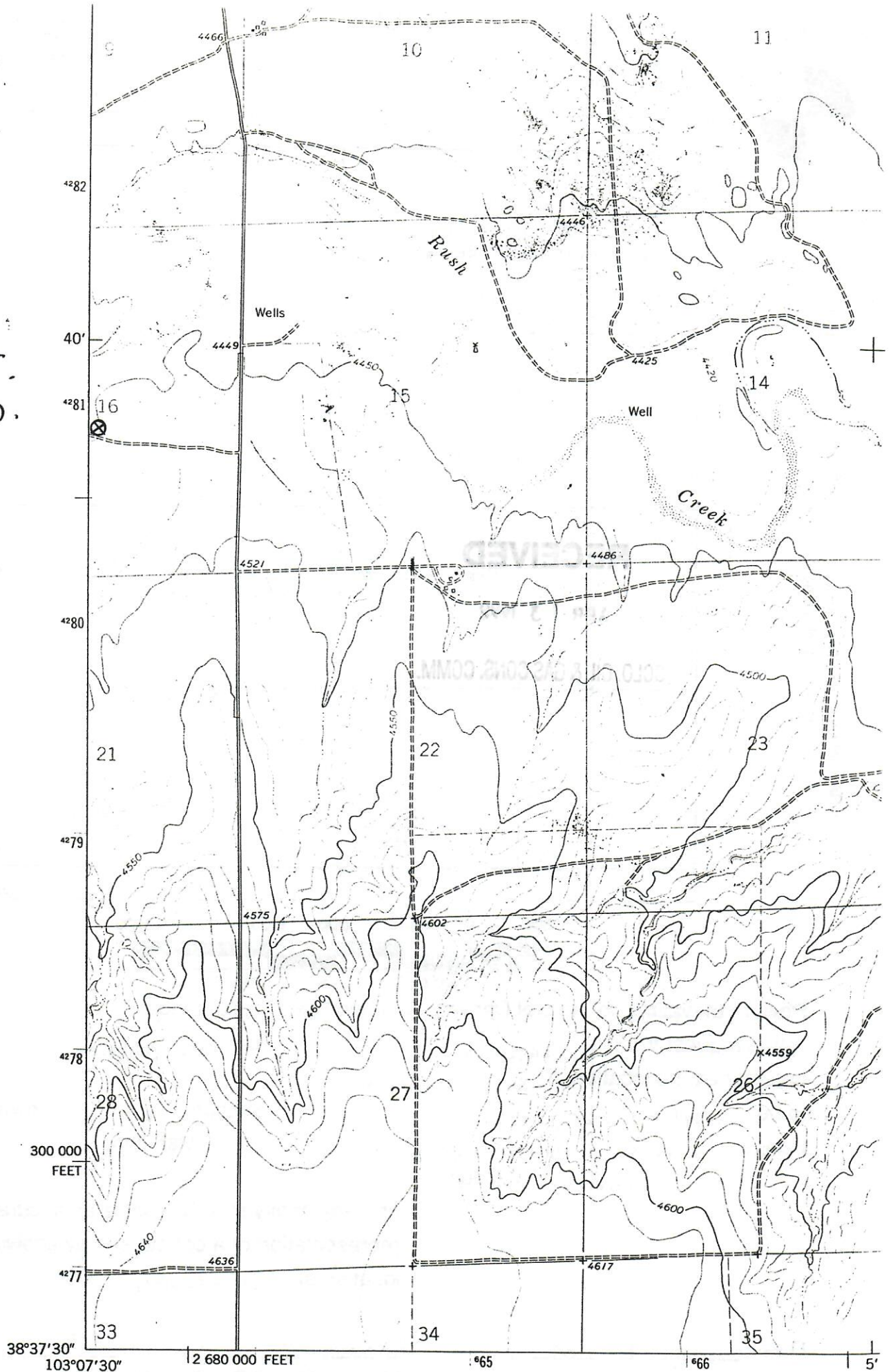
Calvin Heintz

Licensed Land Surveyor No. 23501

State of Colorado



T. 16S.
R. 51W.



ATEA SWI
11 SW

Mapped, edited, and published by the Geological Survey
Control by USGS and NOS/NOAA