



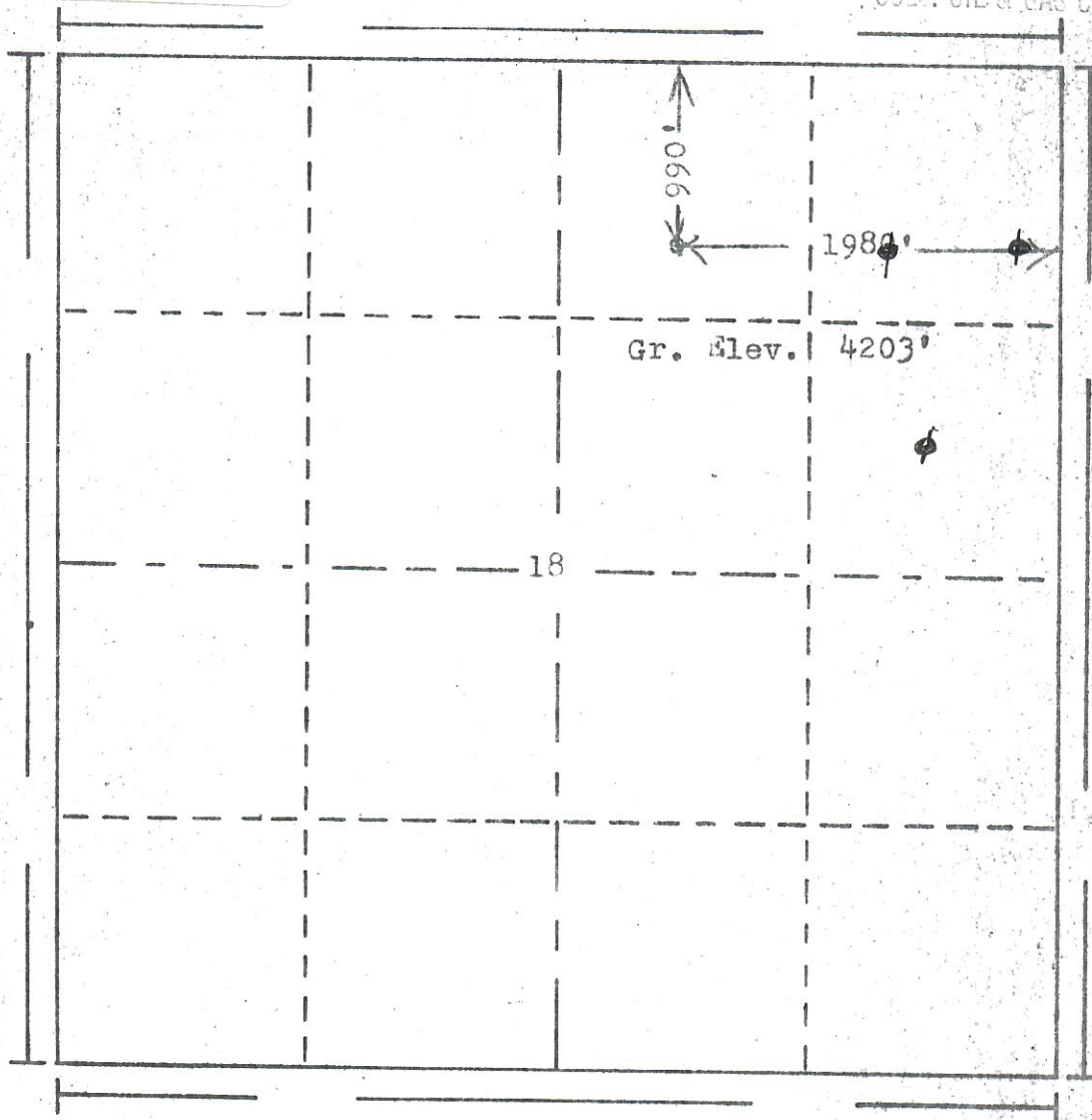
00250930

R. 53W

RECEIVED

OCT 10 1979

COLO. OIL & GAS CONSV. COMM.



T. 9N

Scale... 1" = 1000'

Powers Elevation of Denver, Colorado
has in accordance with a request from Mr. Gear
for C.W. Hughes
determined the location of No. 1 Pritton
to be 990' FN & 1980' FE
Range 53W of the 6th Principal Meridian
Section 18 Township 9N
Logan County, Colorado

I hereby certify that this plat is an
accurate representation of a correct
survey showing the location of

Date: 9-28-79

B. D. [Signature]
Licensed Land Surveyor No. 2853
State of Colorado